

MADELINE DRIVE

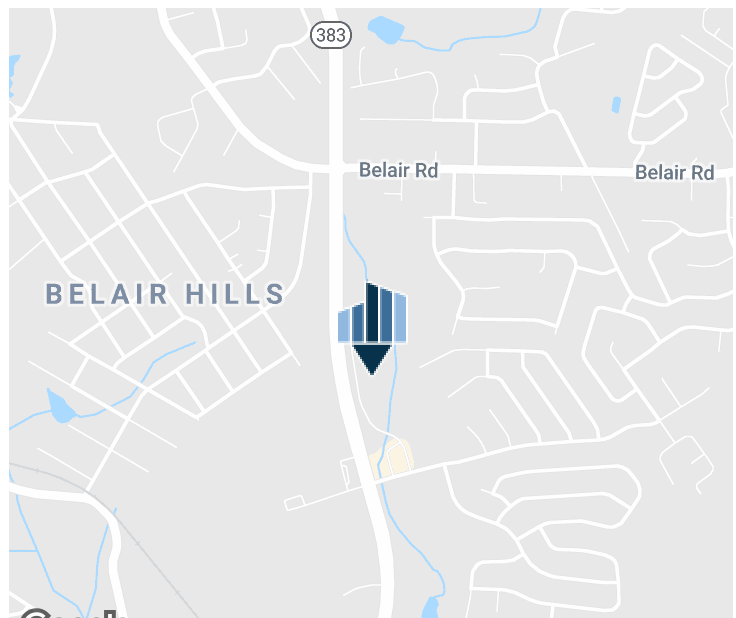
4116/4120 MADELINE DR, AUGUSTA, GA 30909



PROPERTY DETAILS

Dyess Park is located half a mile outside Gate 1 at Fort Gordon. Ideal for office with close proximity to I 20 and I -520. Lots are zoned B-2, graded with retention in place.

Water	Public
Sewer	Public Sewer
Electric	Electricity
Gas	Pipe Gas
Topography	Rolling
Drainage	Good
Road Class	County
Parcel	Road
Access	Paved

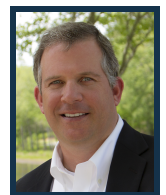


For more information, please contact:

Craig Sims 706.854.6719
Craig.Sims@southeastern.company

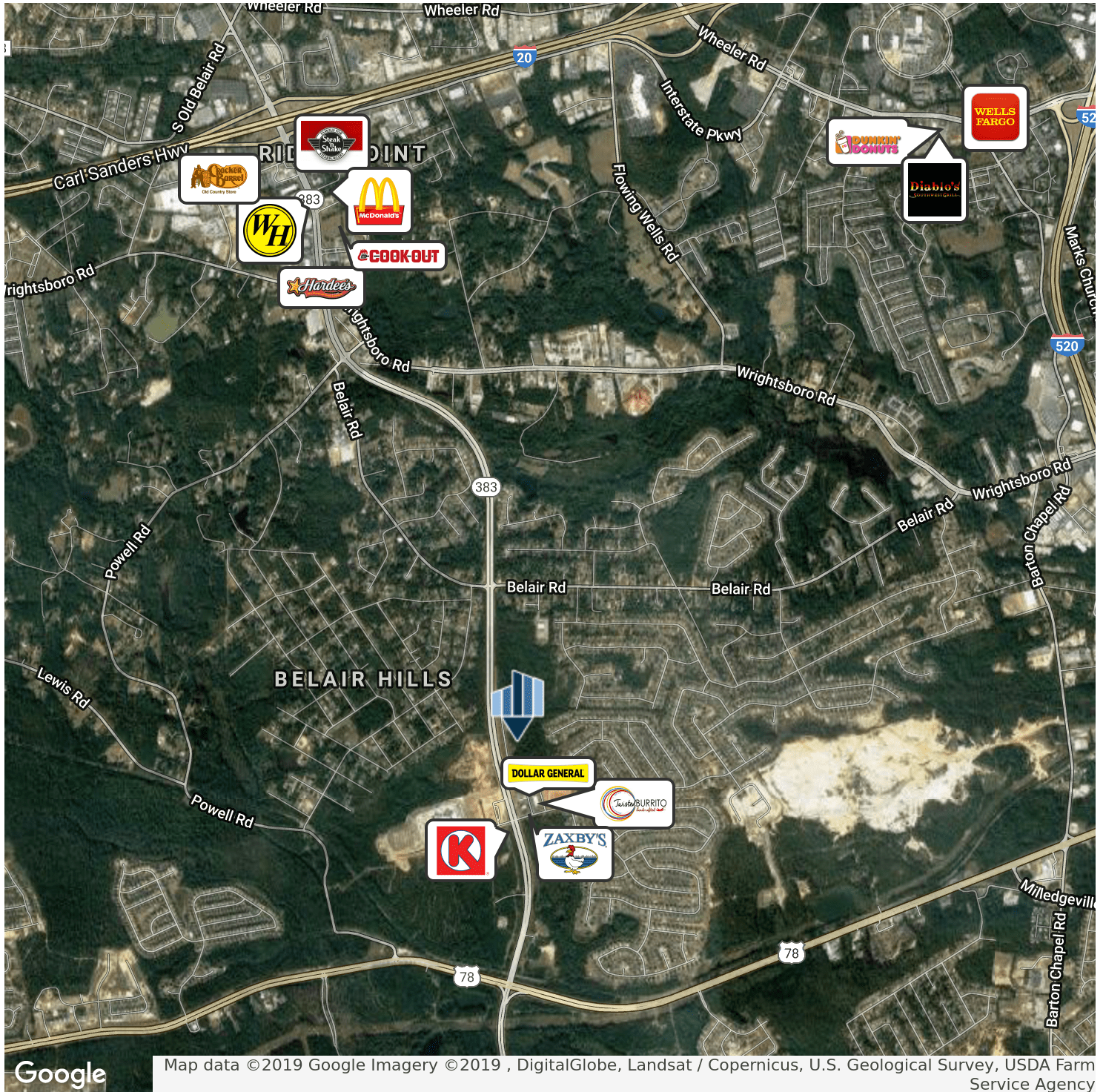


Matt Mills 706.854.6710
Matt.Mills@southeastern.company



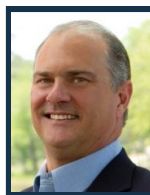
MADELINE DRIVE

4116/4120 MADELINE DR, AUGUSTA, GA 30909



For more information, please contact:

Craig Sims 706.854.6719
Craig.Sims@southeastern.company



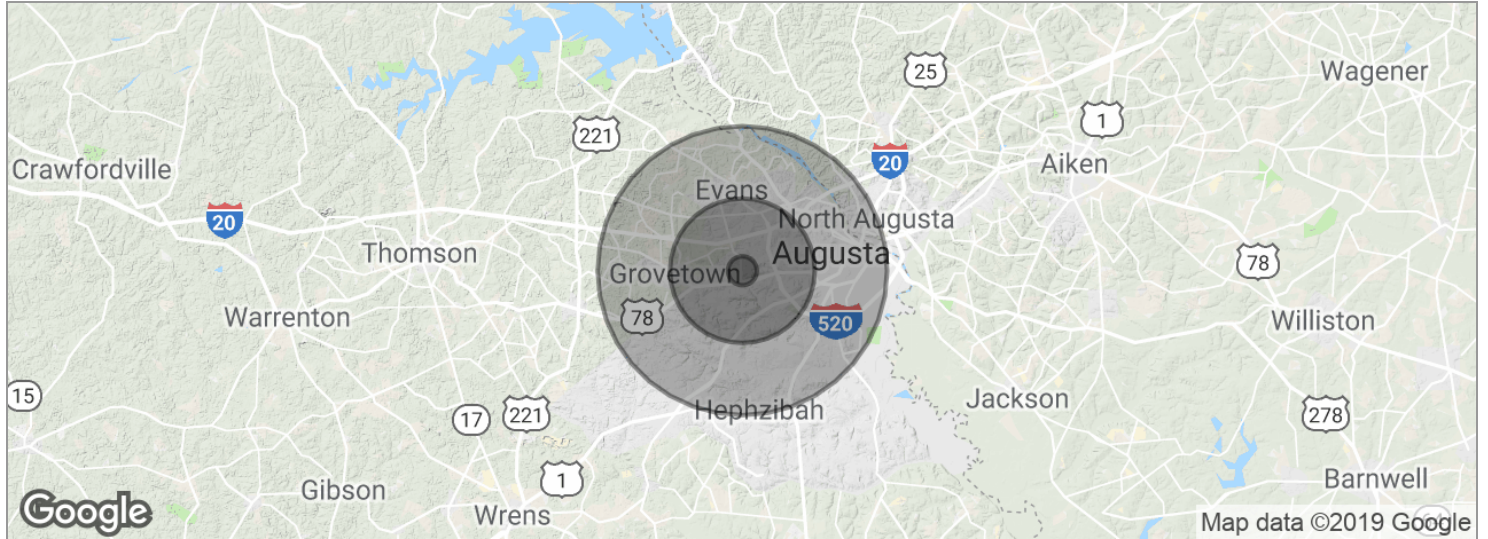
Matt Mills 706.854.6710
Matt.Mills@southeastern.company



Land For Sale

MADELINE DRIVE

4116/4120 MADELINE DR, AUGUSTA, GA 30909



POPULATION	1 MILE	5 MILES	10 MILES
Total population	2,895	96,410	318,938
Median age	35.4	34.5	35.1
Median age (male)	34.5	33.3	33.8
Median age (Female)	36.8	36.0	36.6
HOUSEHOLDS & INCOME	1 MILE	5 MILES	10 MILES
Total households	1,090	35,728	119,928
# of persons per HH	2.7	2.7	2.7
Average HH income	\$54,505	\$57,902	\$61,736
Average house value	\$61,038	\$122,504	\$182,082

* Demographic data derived from 2010 US Census

For more information, please contact:

Craig Sims 706.854.6719
Craig.Sims@southeastern.company



Matt Mills 706.854.6710
Matt.Mills@southeastern.company



MADELINE DRIVE

4116/4120 MADELINE DR, AUGUSTA, GA 30909



For more information, please contact:

Craig Sims 706.854.6719
Craig.Sims@southeastern.company



Matt Mills 706.854.6710
Matt.Mills@southeastern.company



MADELINE DRIVE

4116/4120 MADELINE DR, AUGUSTA, GA 30909



SALE PRICE **SUBJECT TO OFFER**

LOCATION INFORMATION	
Building Name	Madeline Drive
Street Address	4116/4120 Madeline Dr
City, State, Zip	Augusta, GA 30909
County/Township	Richmond

PROPERTY DETAILS	
Property Type	Land
Property Subtype	Other
Zoning	B-2
Lot Size	4.7 Acres

LAND	
Number Of Lots	2

For more information, please contact:

Craig Sims 706.854.6719
Craig.Sims@southeastern.company



Matt Mills 706.854.6710
Matt.Mills@southeastern.company

