

BRIDGEWATER COMMERCE CENTER

BUILDING 3

21211 Clay Rd. | Houston, TX 77449



12,825 SF AVAILABLE
FOR SALE OR LEASE

PROPERTY FEATURES

- Great access to Grand Parkway via Clay Road with close proximity to I-10 and 290.
- Attractive stand-alone building
- High visibility from Clay Road

BUILDING FEATURES

- 12,825 SF total
- 1,500 SF office
- 24' clear height
- Cross-dock or rear-load configuration
- 1 loading dock with oversized door
- 2 grade-level doors
- 400 amps of power



For additional leasing information, please contact:

Garret Geaccone

garret.geaccone@streamrealty.com
713.300.0232

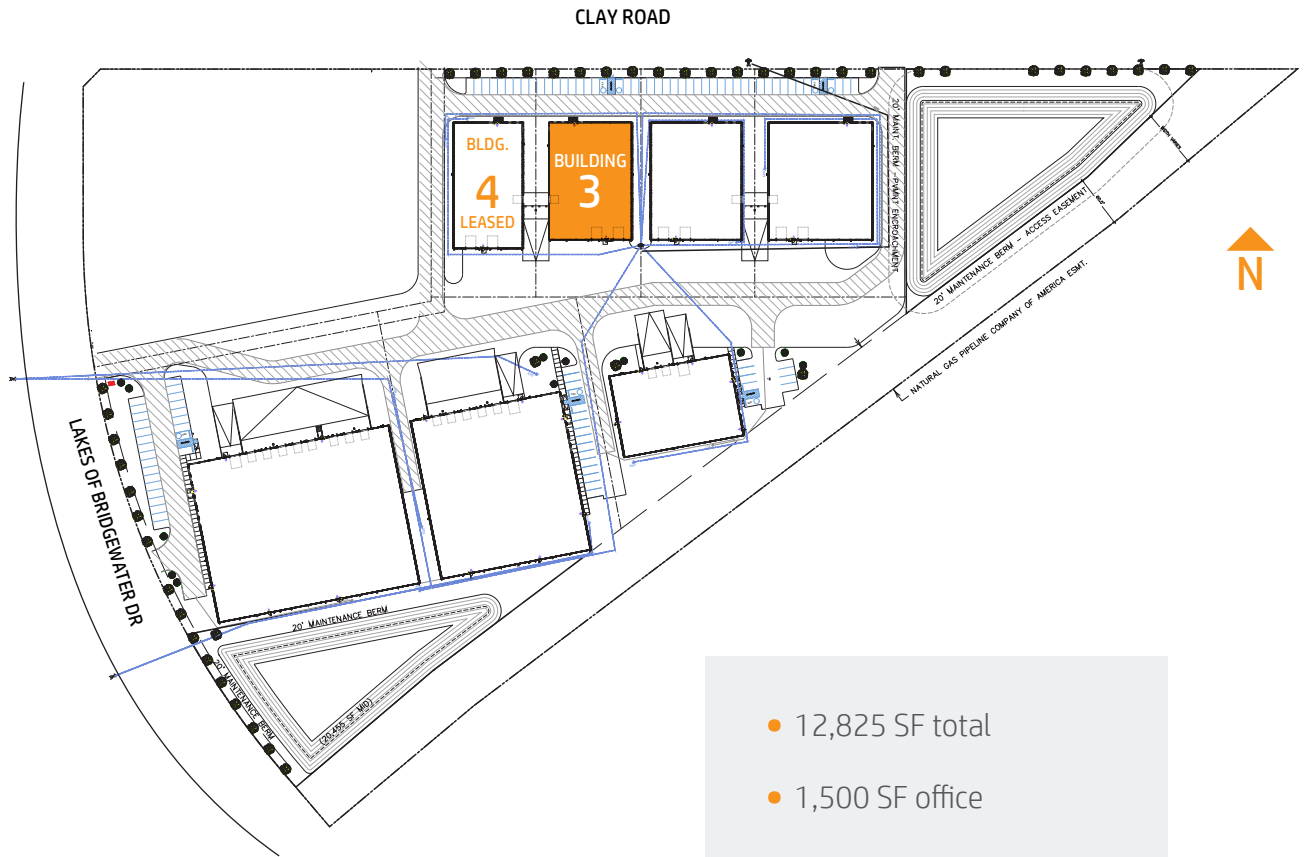
Boone Smith

boone.smith@streamrealty.com
713.300.0267

Abraham Richardson

abraham.richardson@streamrealty.com
713.300.0329





FOR SALE OR LEASE

- 12,825 SF total
- 1,500 SF office
- 24' clear height
- Rear-load configuration
- 1 loading dock with oversized door
- 2 grade-level doors
- 400 amps of power

For additional leasing information, please contact:

Garret Geaccone
garret.geaccone@streamrealty.com
713.300.0232

Boone Smith
boone.smith@streamrealty.com
713.300.0267

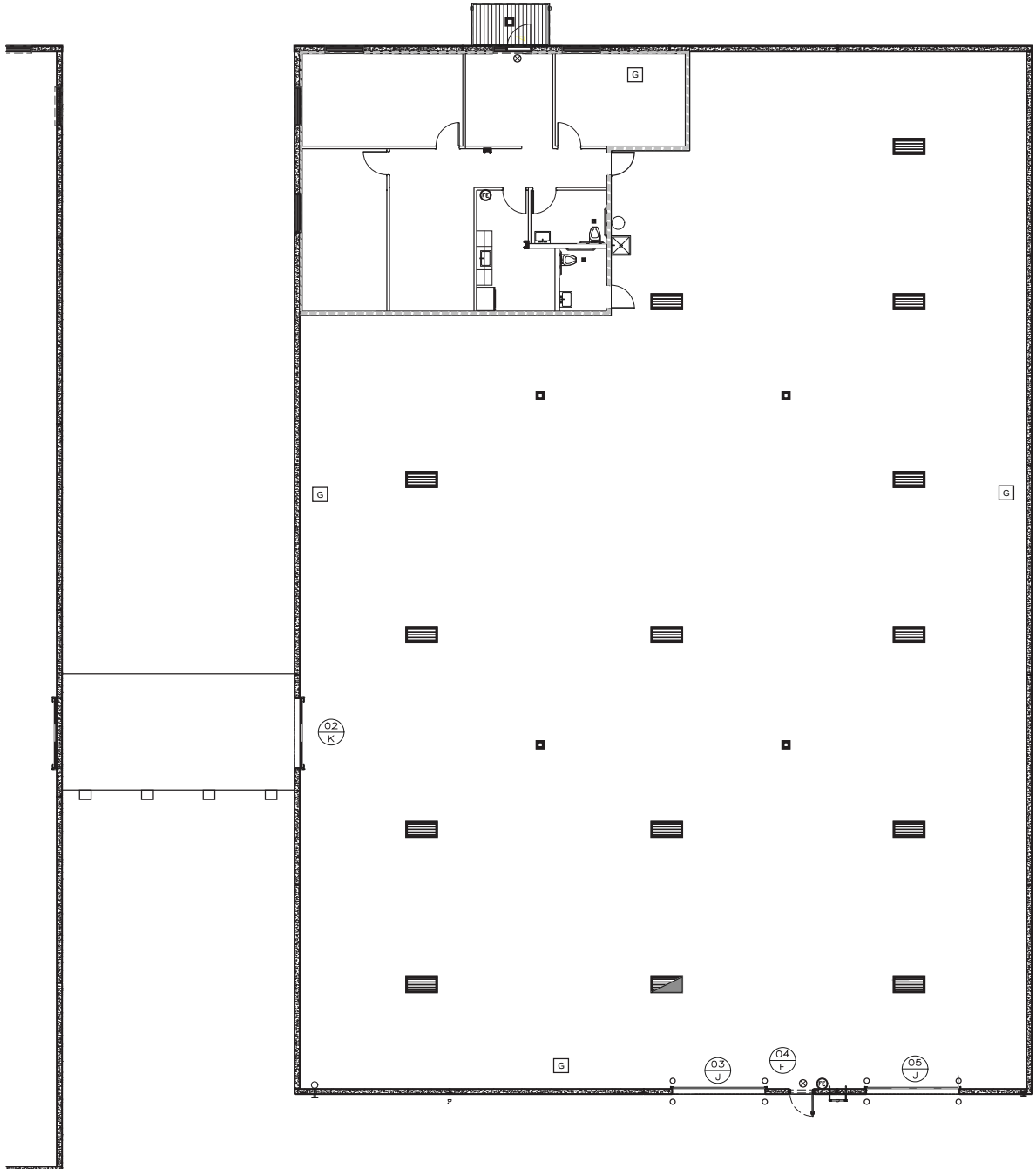
Abraham Richardson
abraham.richardson@streamrealty.com
713.300.0329



BRIDGEWATER COMMERCE CENTER

BUILDING 3

21211 Clay Rd. | Houston, TX 77449



For additional leasing information, please contact:

Garret Geaccone
garret.geaccone@streamrealty.com
713.300.0232

Boone Smith
boone.smith@streamrealty.com
713.300.0267

Abraham Richardson
abraham.richardson@streamrealty.com
713.300.0329

