



1500  
CITY WEST



 **TRANSWESTERN**<sup>®</sup>

 **BioUrja**

# AT A GLANCE

- » 191,281 RSF
- » 10 STORIES
- » 4.0/1,000 PARKING RATIO



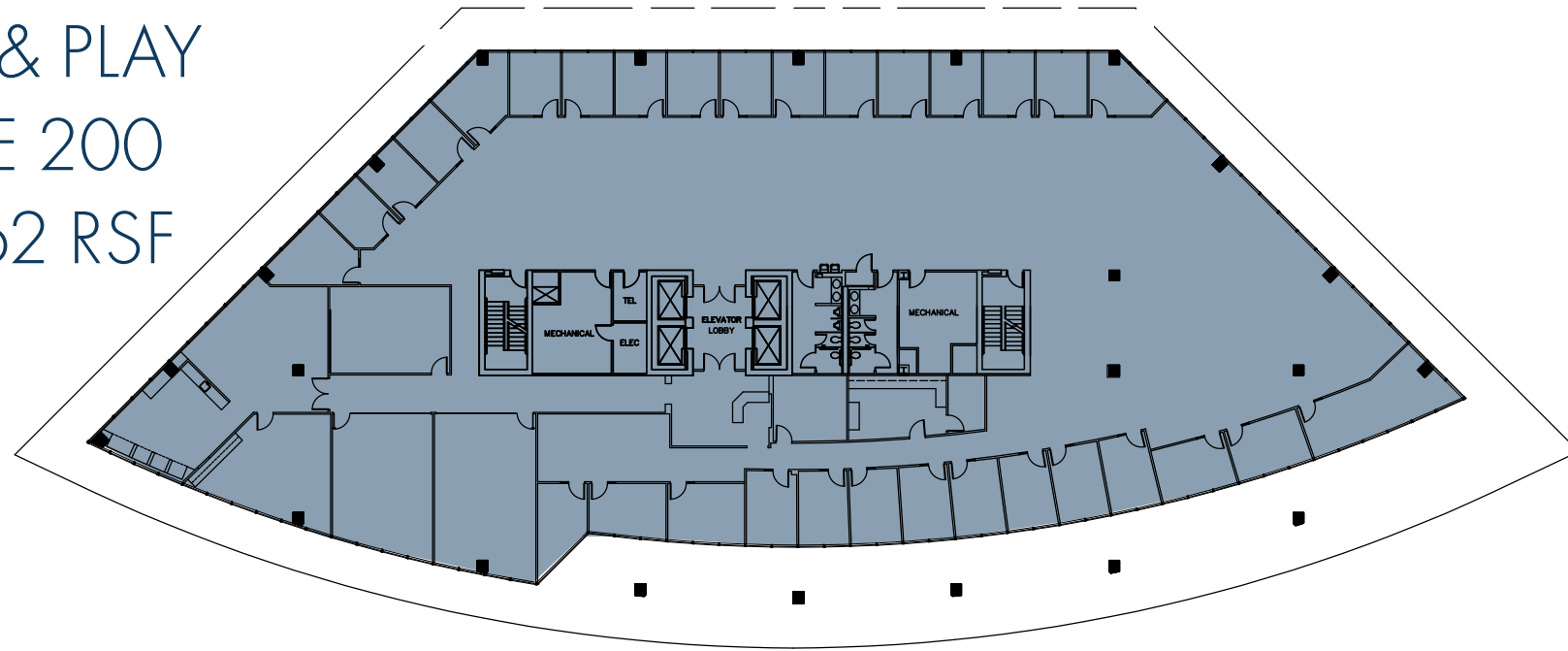
# BUILDING HIGHLIGHTS

- » NEWLY RENOVATED LOBBY
- » ON-SITE MANAGEMENT & SECURITY
- » CONVENIENT ON-SITE CAFE
- » LOCAL OWNERSHIP
- » PROMINENT LOCATION
- » COMPETITIVE RENTAL RATES
- » 18K RSF PLUG & PLAY OPTION
- » CONFERENCING & FITNESS CENTER, COMING SOON



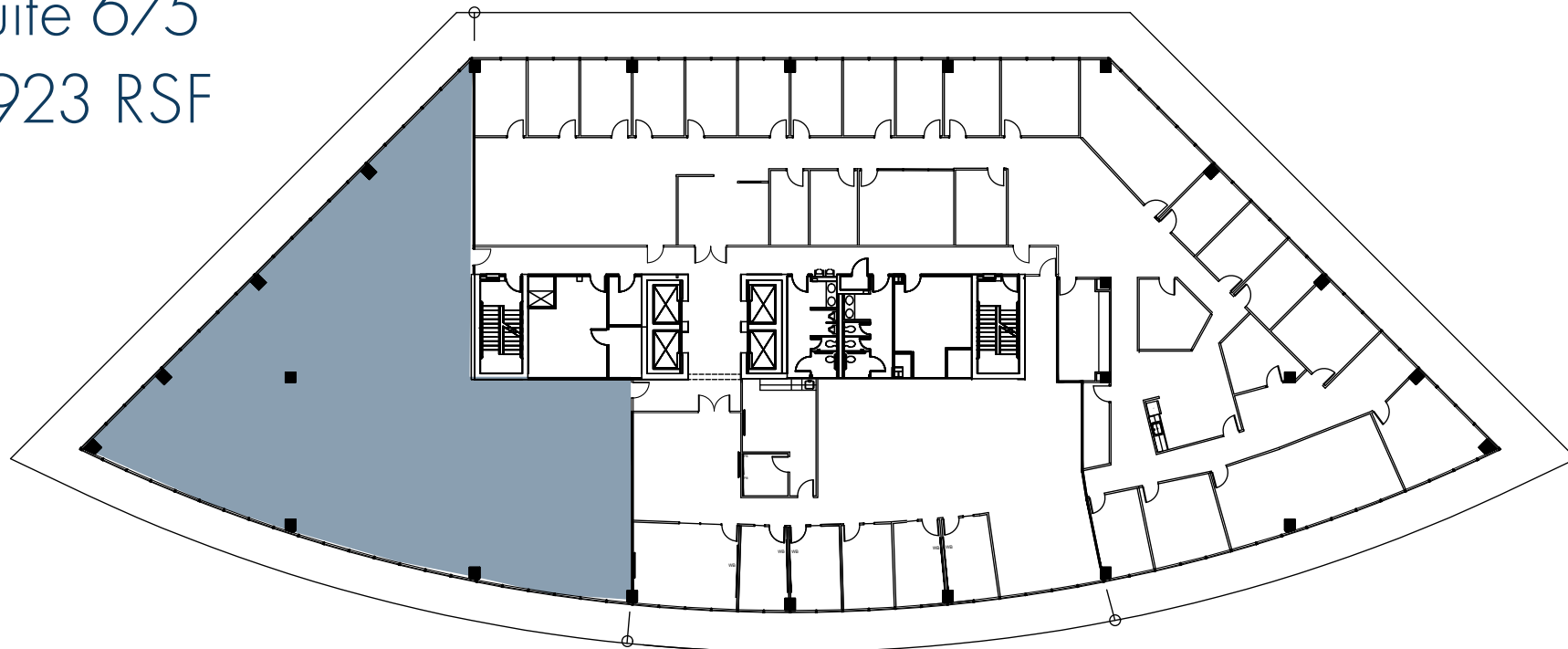
# AVAILABILITIES

PLUG & PLAY  
SUITE 200  
18,062 RSF



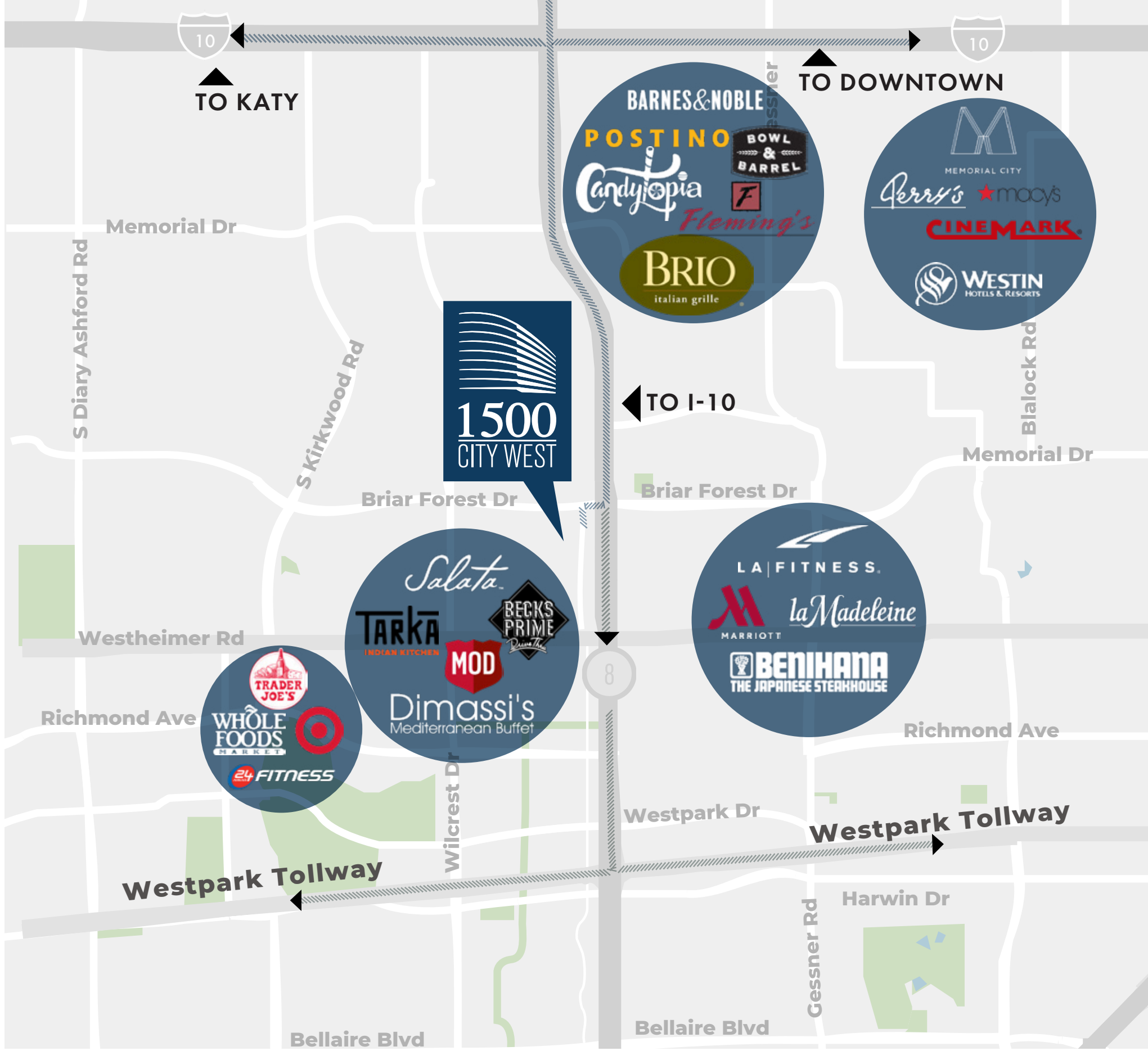
FULL FLOOR AVAILABILITY  
CUSTOMIZEABLE FLOOR PLANS

Suite 675  
5,923 RSF



# PRIME LOCATION

JUST MINUTES AWAY  
DISCOVER WESTCHASE, FROM A+ DINING AND RETAIL TO FITNESS CLUBS & SPAS, EVERYTHING YOU NEED IS ONLY MINUTES AWAY.



BUILDING SIGNAGE OPPORTUNITIES AVAILABLE  
VISIBLE FROM BELTWAY 8

# MEMORIAL CITY <12 MINS CITY CENTRE <10 MINS

LIFE IN THE CITY



MEMORIAL CITY MALL  
DINING  
SHOPPING  
HOTELS  
EVENTS  
LIVE MUSIC  
ART  
WELLNESS  
BEAUTY  
BOWLING  
INDOOR SKYDIVING  
CANDYTOPIA





LOUANN PEREIRA  
713.272.1267  
louann.pereira@transwestern.com

KELLI GAULT  
713.270.3349  
kelli.gault@transwestern.com

DOUG LITTLE  
713.272.1284  
doug.little@transwestern.com

