

For Lease

# Lee World Center

650 - 1,147 SF | \$25.50 / SF



## 1850 Lee Road

Winter Park, Florida 32789

### Property Highlights

- 136,747± SF, three-story office building with 2 elevators
- Full-service building with ample parking: 242 spaces on 3.14± acre site
- 24-hour access with evening building attendant
- Great location midway between I-4 and US Hwy 17-92; only 2 minutes to I-4 on-ramp
- Very close to Winter Park Village and downtown Winter Park
- Close to restaurants, banks and shopping
- Zoning: O-1 (Office)
- Easy access to Lee Road, I-4, US Hwy 17-92, Morse Blvd, Fairbanks Avenue and Orange Avenue

### AVAILABLE SPACES

Space	Size (RSF)
Suite 111	650
Suite 309	1,111
Suite 324/325	841
Suite 347	1,147



For more information

**Jeffrey Bloom, CCIM**

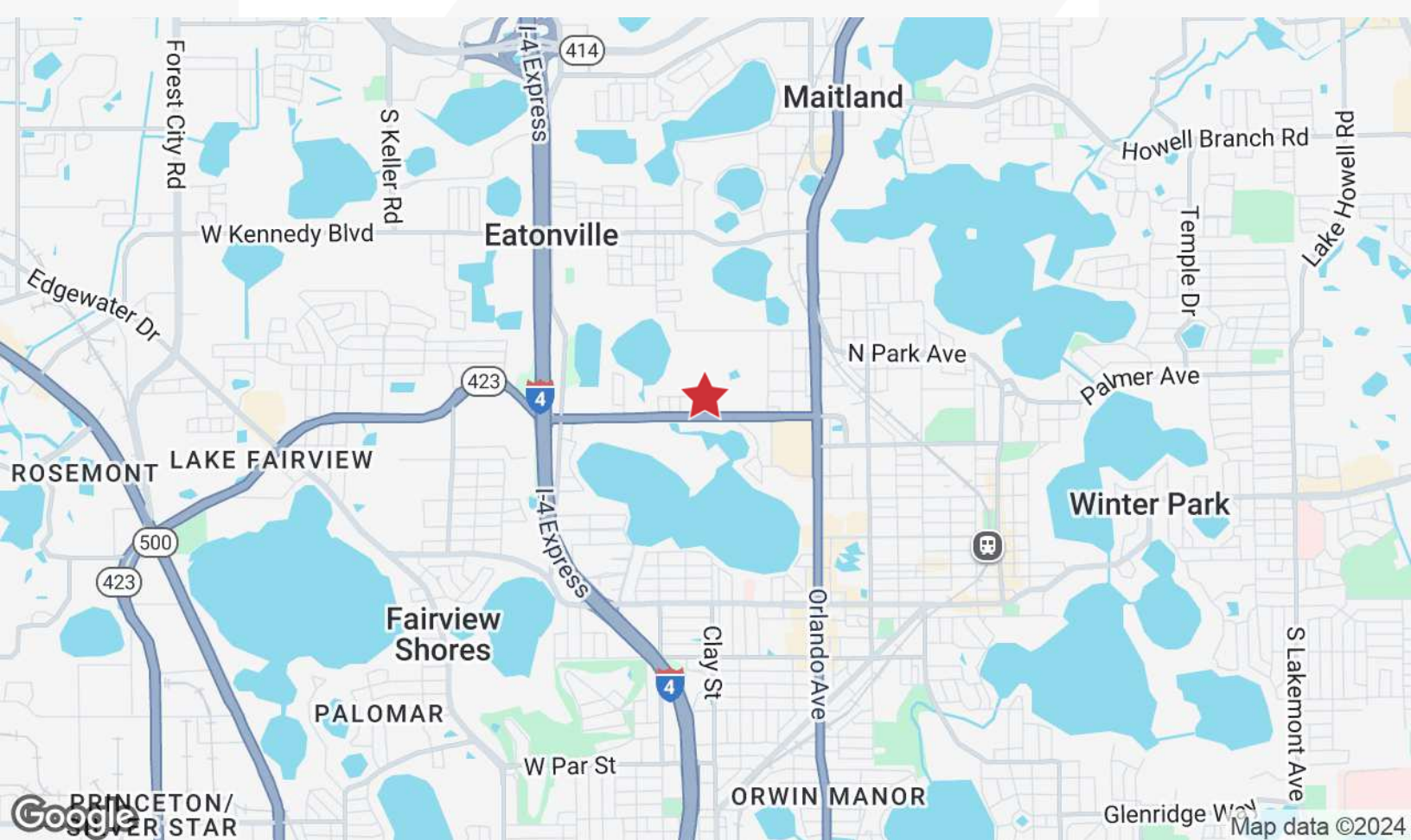
O: 407 949 0709

[jbloom@realvest.com](mailto:jbloom@realvest.com)

# Property Photos



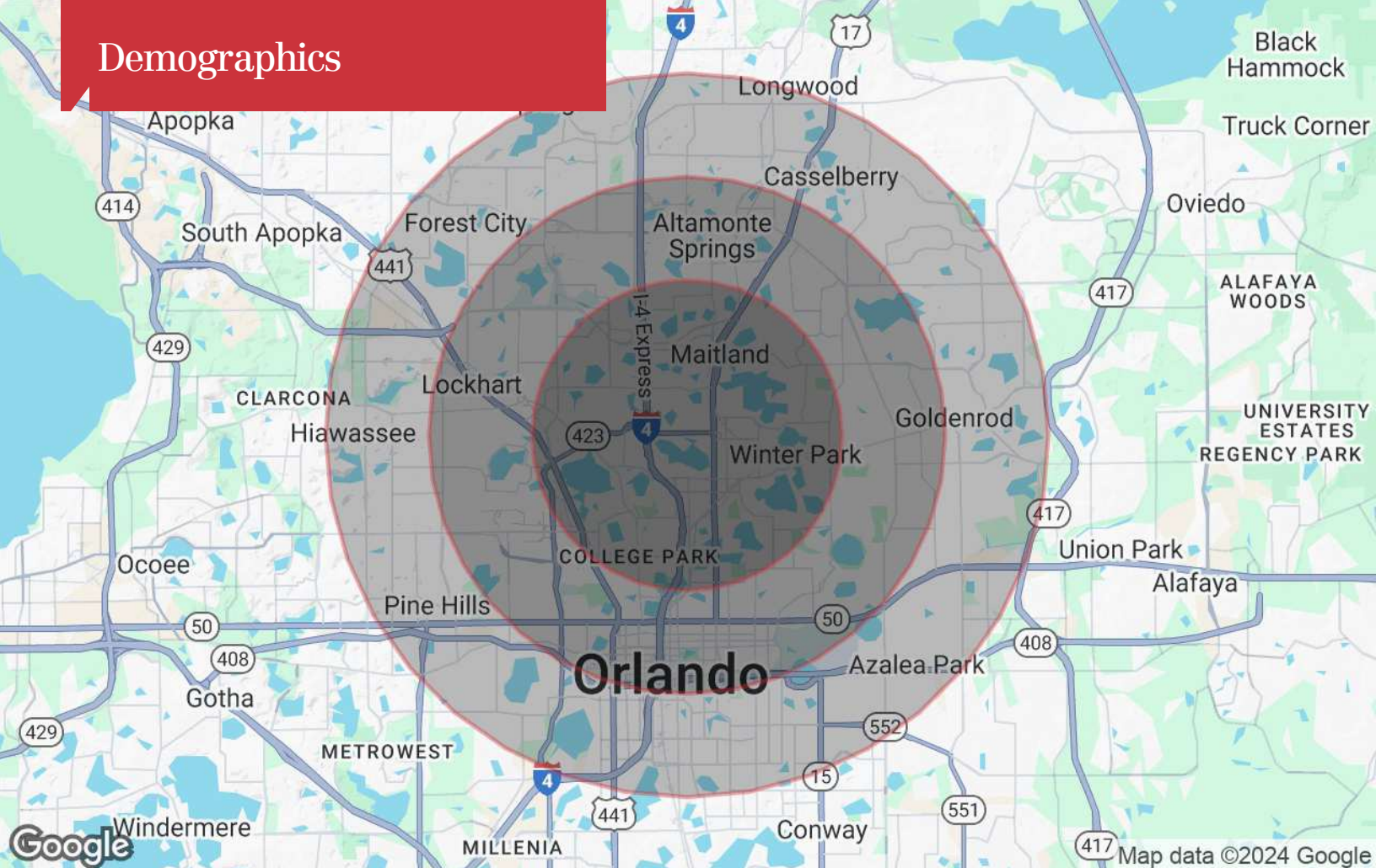
# Location Maps



The information contained herein has been given to us by the owner of the property or other sources we deem reliable. We have no reason to doubt its accuracy, but we do not guarantee it. All information should be verified prior to purchase or lease. Unless otherwise noted, the property is being offered as-is, where is, with all faults.

1800 Pembroke Drive, Suite 350  
Orlando, FL 32810  
407 875 9989 tel  
[nairealvest.com](http://nairealvest.com)

# Demographics



## Population

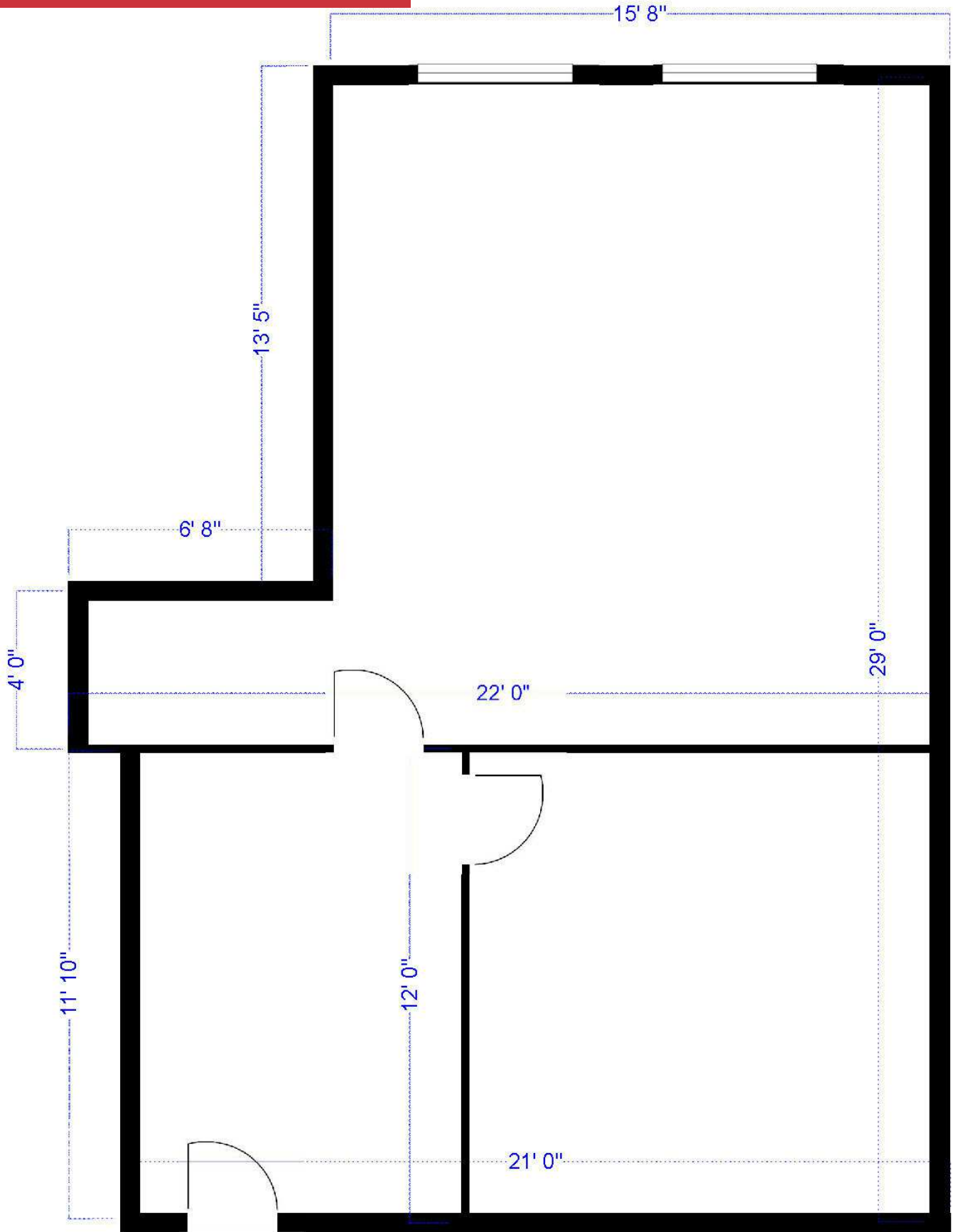
	3 Miles	5 Miles	7 Miles
TOTAL POPULATION	80,793	275,550	552,635
MEDIAN AGE	42	41	41
MEDIAN AGE (MALE)	41	40	39
MEDIAN AGE (FEMALE)	43	42	42

## Households & Income

	3 Miles	5 Miles	7 Miles
TOTAL HOUSEHOLDS	35,980	122,499	227,080
# OF PERSONS PER HH	2.2	2.2	2.4
AVERAGE HH INCOME	\$132,782	\$107,373	\$94,609
AVERAGE HOUSE VALUE	\$615,943	\$486,886	\$412,694

\* Demographic data derived from 2020 ACS - US Census

Suite 111 - 650± RSF



Suite 309 - 1,111± RSF

