

SALE / LEASE

DOBBS AND KINGS ESTATE

Dobbs and Kings Estate Saint Augustine, FL 32086



VIDEO

PROPERTY DESCRIPTION

Now available for sale or lease up to 30,000 SF, this highly versatile fully sprinkled property with HVAC offers commercial warehouse zoning that accommodates retail, office, and industrial uses. Positioned at a signalized intersection with excellent visibility and traffic exposure, this location provides unmatched flexibility for a wide variety of business types.

Whether you're seeking warehouse, showroom, office, or mixed-use space, this property allows for customizable configurations and build-outs to suit your specific operational needs. Ample parking, multiple access points, and strong surrounding demographics make this a premier opportunity for both users and investors alike.

Grade Level Doors 14 high by 12 wide
Eave Height 22.5ft - 19.5ft
Clear Height 21ft - 16.5ft
Parking 129 Shared Spaces

PROPERTY HIGHLIGHTS

- Up to 30,000 SF
- Zoning allows for some retail, office, and industrial uses
- High-visibility corner at lighted intersection
- Excellent access and signage potential
- Fully Sprinkled and HVAC

OFFERING SUMMARY

Sale Price:	\$6,000,000
Lease Rate:	\$15.00 SF/yr (NNN)
Number of Units:	20
Available SF:	1,500 - 30,000 SF
Lot Size:	6.38 Acres
Building Size:	30,000 SF

Adam Lanteigne
(904) 584-7777
adam@soldin904.com

Eric Maimo
(904) 537-6443
EricCRE@EricMaimo.com

Bob Buckmaster, CCIM
(904) 827-1717
bob@thepremierproperties.com



**COLDWELL BANKER
COMMERCIAL**
PREMIER PROPERTIES

SALE / LEASE

DOBBS AND KINGS ESTATE

Dobbs and Kings Estate Saint Augustine, FL 32086



Adam Lanteigne
(904) 584-7777
adam@soldin904.com

Eric Maimo
(904) 537-6443
EricCRE@EricMaimo.com

Bob Buckmaster, CCIM
(904) 827-1717
bob@thepremierproperties.com



COLDWELL BANKER
COMMERCIAL
PREMIER PROPERTIES

SALE / LEASE

DOBBS AND KINGS ESTATE

Dobbs and Kings Estate Saint Augustine, FL 32086



Adam Lanteigne
(904) 584-7777
adam@soldin904.com

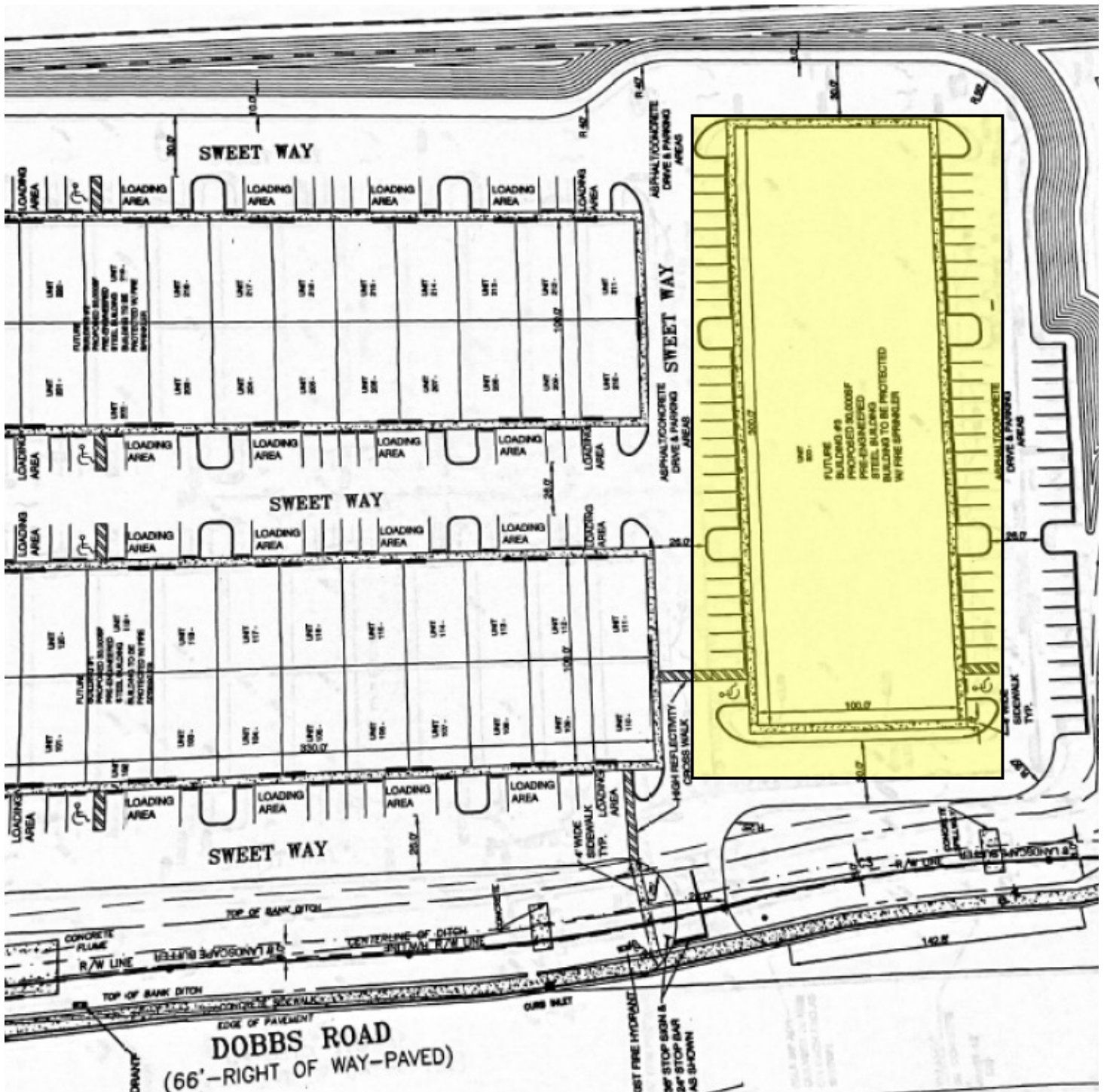
Eric Maimo
(904) 537-6443
EricCRE@EricMaimo.com

Bob Buckmaster, CCIM
(904) 827-1717
bob@thepremierproperties.com



COLDWELL BANKER
COMMERCIAL
PREMIER PROPERTIES

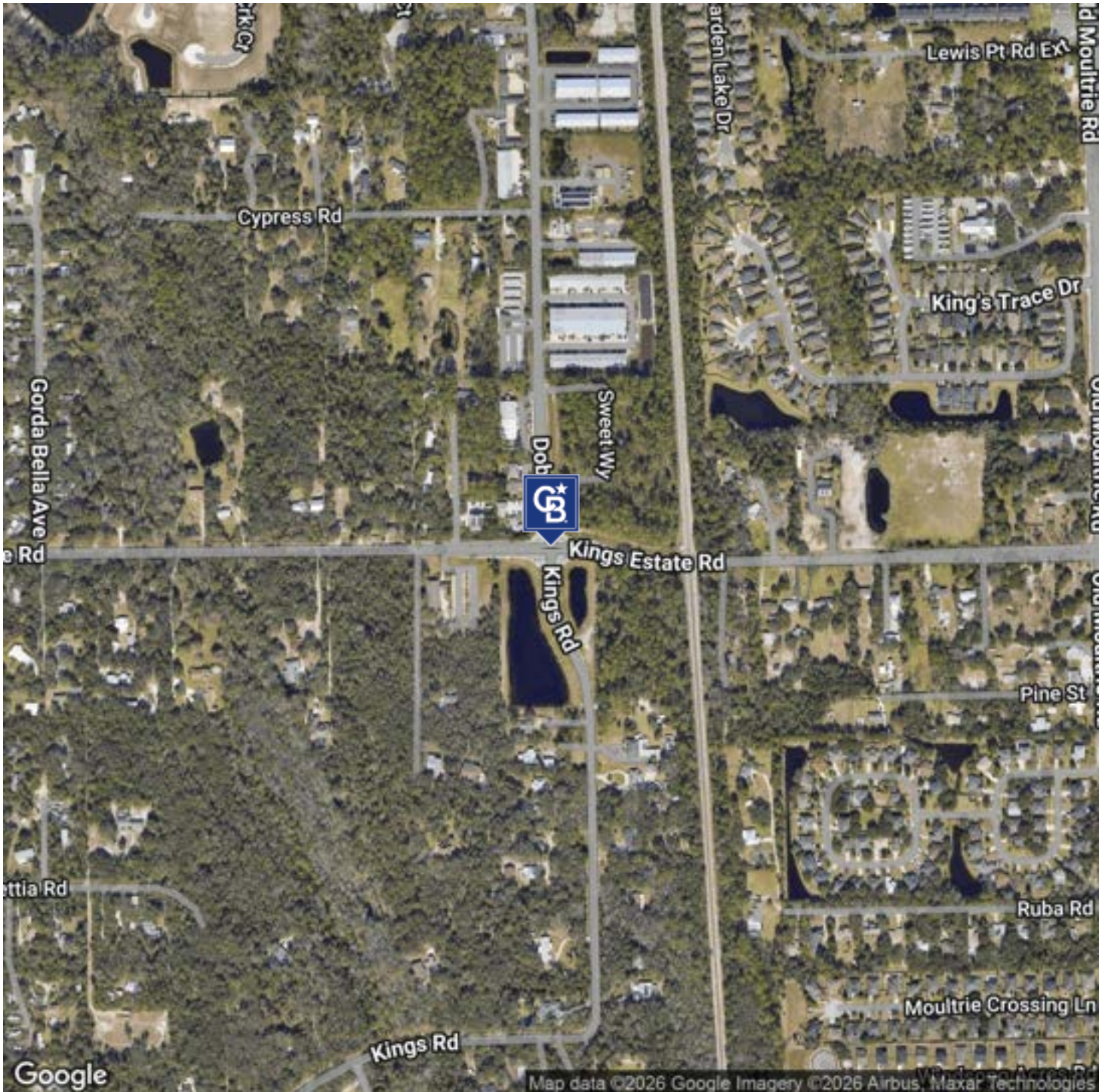
Dobbs and Kings Estate Saint Augustine, FL 32086



SALE / LEASE

DOBBS AND KINGS ESTATE

Dobbs and Kings Estate Saint Augustine, FL 32086



Adam Lanteigne
(904) 584-7777
adam@soldin904.com

Eric Maimo
(904) 537-6443
EricCRE@EricMaimo.com

Bob Buckmaster, CCIM
(904) 827-1717
bob@thepremierproperties.com

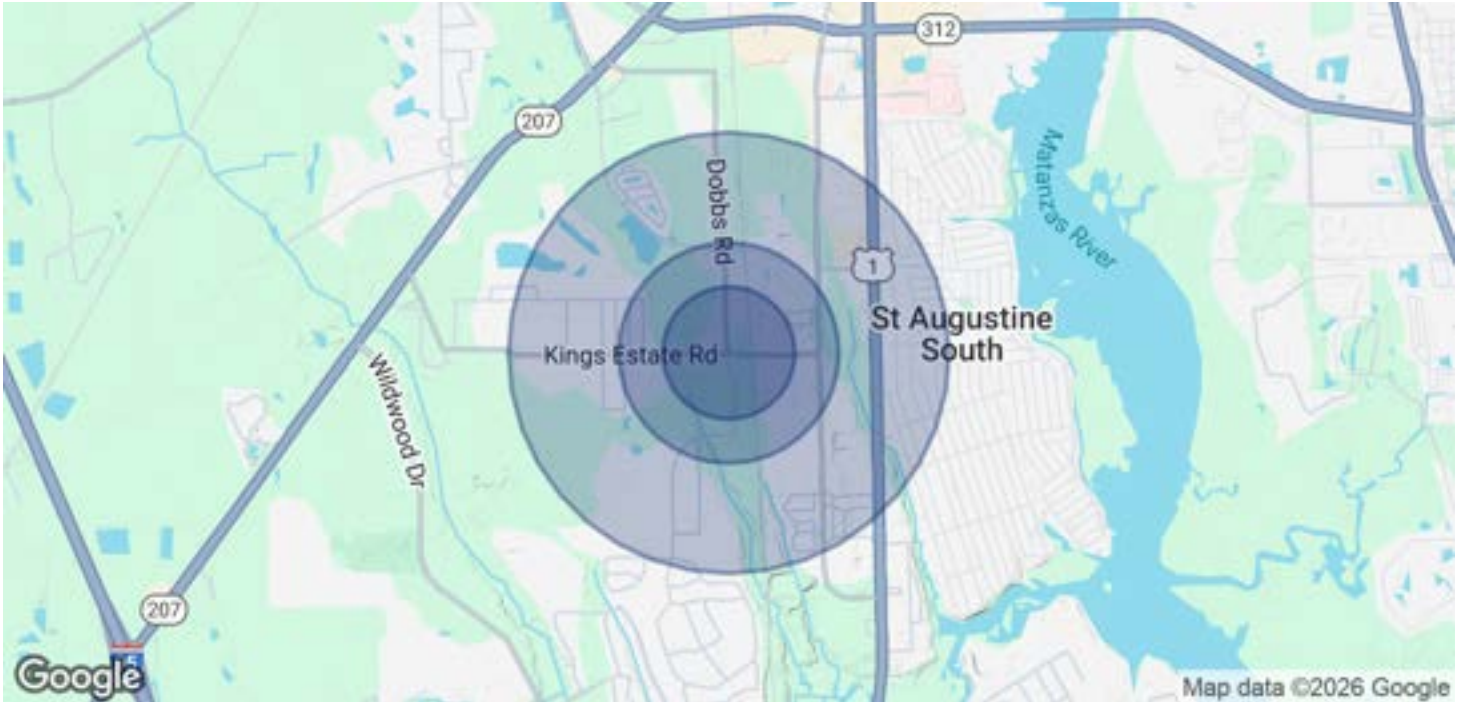


**COLDWELL BANKER
COMMERCIAL**
PREMIER PROPERTIES

SALE / LEASE

DOBBS AND KINGS ESTATE

Dobbs and Kings Estate Saint Augustine, FL 32086



POPULATION

	0.3 MILES	0.5 MILES	1 MILE
Total Population	318	1,219	5,436
Average Age	47	46	45
Average Age (Male)	46	45	45
Average Age (Female)	47	47	46

HOUSEHOLDS & INCOME

	0.3 MILES	0.5 MILES	1 MILE
Total Households	126	489	2,242
# of Persons per HH	2.5	2.5	2.4
Average HH Income	\$98,839	\$93,242	\$90,237
Average House Value	\$406,441	\$391,726	\$383,624

Demographics data derived from AlphaMap

Adam Lanteigne
(904) 584-7777
adam@soldin904.com

Eric Maimo
(904) 537-6443
EricCRE@EricMaimo.com

Bob Buckmaster, CCIM
(904) 827-1717
bob@thepremierproperties.com



**COLDWELL BANKER
COMMERCIAL**
PREMIER PROPERTIES