

NEW OWNERSHIP PENDING - NOW LEASING

**3215 Main Street
Kansas City, MO**

1,144 SF - 12,016 SF Available



- New Ownership **Q1 2021**
- **7,778 SF Available - 1st Floor**
- **4,238 SF Available - 2nd Floor**
- **74 Free Surface Parking Spaces**
- Building Signage
- **4 New Street Car stops within 1 block of intersection (North & South)**
- Substantial Building Improvements Pending
- Professionally Managed
- Tenant Finish Funds Available

RUBENSTEIN REAL ESTATE CO., LC

6310 Lamar, Suite 220
Overland Park, KS 66202

Phone (913) 362-1999 | Fax (913) 362-1969

www.rubensteinre.com

DWIGHT MEDBERY III

dmed@rubensteinre.com

CULLEN MAGARIEL

cullen@rubensteinre.com

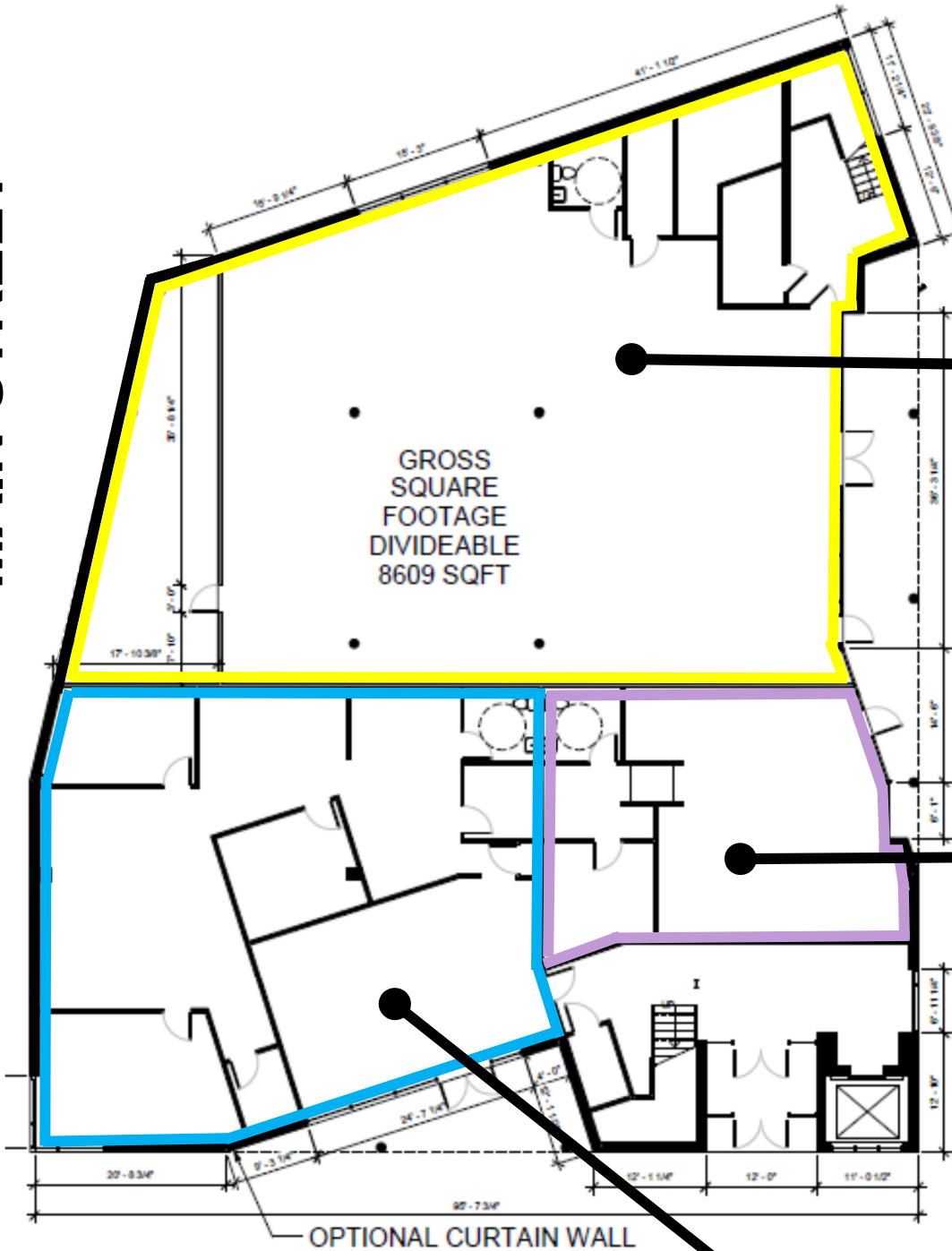
FUTURE STREET CAR EXPANSION



← LINWOOD →



↑ MAIN STREET ↓



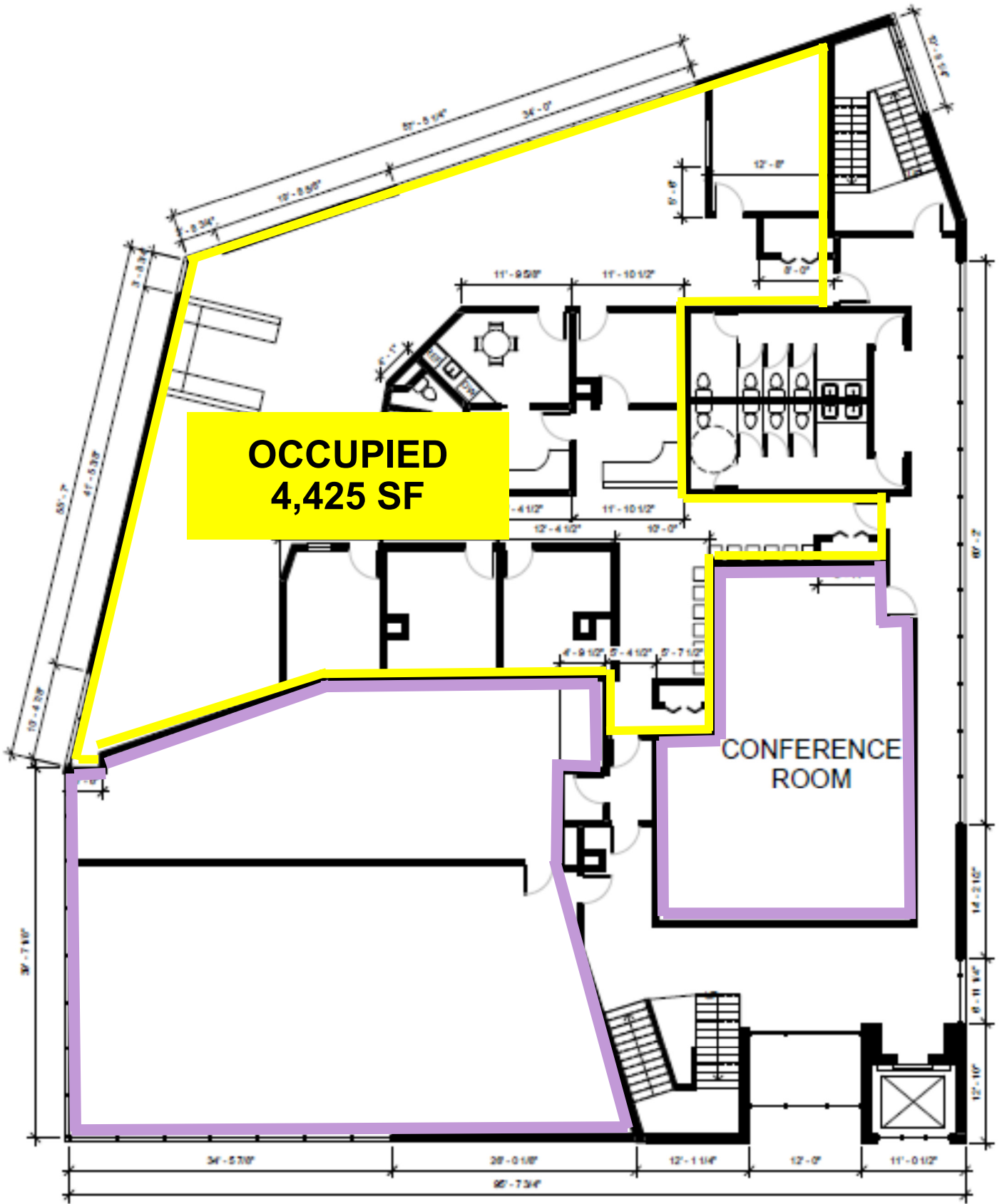
**Vacant
4,036 SF**

**Vacant
1,144 SF**

**Vacant
2,598 SF**

GROUND FLOOR
1/8" = 1'-0"

1st Floor



2nd Floor

Vacant = 4,238 SF

