



**Keegan & Coppin**  
COMPANY, INC.

FOR LEASE

**SPEER BUILDING  
255 WEST NAPA STREET  
SONOMA, CA**

**PROFESSIONAL OFFICE &  
RETAIL SPACE**



Go beyond broker.

PRESENTED BY:

**JOEL JAMAN, PARTNER**  
LIC # 00857563 (707) 528-1400  
[JJAMAN@KEEGANCOPPIN.COM](mailto:JJAMAN@KEEGANCOPPIN.COM)





**Keegan & Coppin**  
COMPANY, INC.



SPEER BUILDING  
255 WEST NAPA STREET  
SONOMA, CA

**PROFESSIONAL  
OFFICE &  
RETAIL SPACE  
FOR LEASE**

## PROPERTY INFORMATION

### Space Size

Suite C: 150+/- SF

Suite L: 150+/- SF

### Lease Rates

- **Suite C:** \$500/mo  
(1st Floor)
- **Suite L:** \$500/mo  
(1st Floor)

Rent is modified full serviced with the exception of the interior janitorial.

**Lease Terms** 1 - 5 year

## HIGHLIGHTS

- Property is walking distance to the square
- Excellent Location w/ Easy Access to Downtown Business District
- Ideal for: Attorney, Accountant, & Other Small Business Types

### Zoning

C (Commercial District)  
– Permitted uses include  
Retail, Art Studio's, Professional  
Office and Personal Services

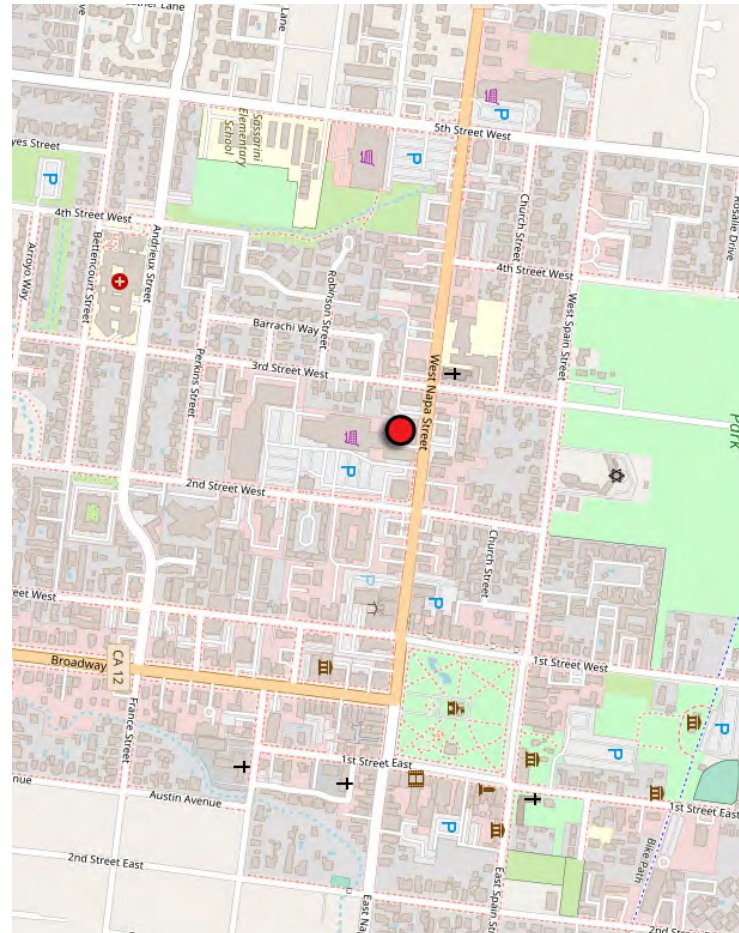
### Parking

On-site parking

### Total Bldg SF

18,000 SF +/- sq. ft.

### AREA MAP



PRESENTED BY:

**JOEL JAMAN, PARTNER**  
**KEEGAN & COPPIN CO., INC.**  
LIC # 00857563 (707) 528-1400  
JJAMAN@KEEGANCOPPIN.COM

The above information, while not guaranteed, has been secured from sources we believe to be reliable. Submitted subject to error, change or withdrawal. An interested party should verify the status of the property and the information herein.





**Keegan & Coppin**  
COMPANY, INC.



SPEER BUILDING  
255 WEST NAPA STREET  
SONOMA, CA

**PROFESSIONAL  
OFFICE &  
RETAIL SPACE  
FOR LEASE**

## PROPERTY PHOTOS



PRESENTED BY:

**JOEL JAMAN, PARTNER**  
**KEEGAN & COPPIN CO., INC.**  
LIC # 00857563 (707) 528-1400  
JJAMAN@KEEGANCOPPIN.COM

The above information, while not guaranteed, has been secured from sources we believe to be reliable. Submitted subject to error, change or withdrawal. An interested party should verify the status of the property and the information herein.





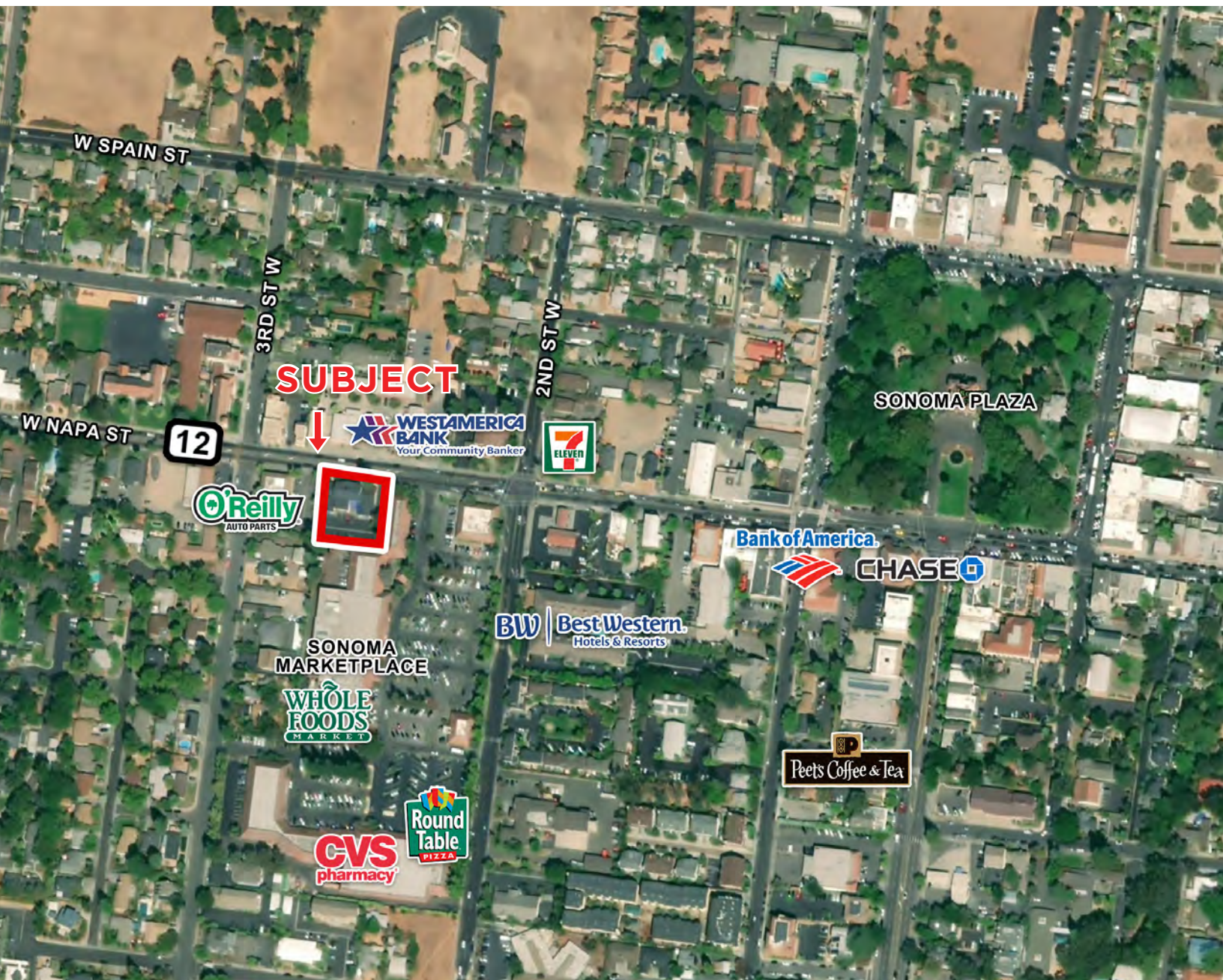
**Keegan & Coppin**  
COMPANY, INC.



SPEER BUILDING  
255 WEST NAPA STREET  
SONOMA, CA

**PROFESSIONAL  
OFFICE &  
RETAIL SPACE  
FOR LEASE**

## AERIAL MAP



Keegan & Coppin Co., Inc.  
1355 N Dutton Ave.  
Santa Rosa, CA 95401  
[www.keegancoppin.com](http://www.keegancoppin.com)  
(707) 528-1400

The above information, while not guaranteed, has been secured from sources we believe to be reliable. Submitted subject to error, change or withdrawal. An interested party should verify the status of the property and the information herein.

PRESENTED BY:

**JOEL JAMAN, PARTNER**  
LIC # 00857563 (707) 528-1400  
[JJAMAN@KEEGANCOPPIN.COM](mailto:JJAMAN@KEEGANCOPPIN.COM)