

1850 GATEWAY

SAN MATEO, CA

Suite 205 - 3,274 ft²

Suite 250 - 10,095 ft²

Suite 400 - 14,074 ft²

Suite 500 - 20,790 ft²

ROGER FIELDS
(650) 327-2014 OFFICE
(650) 207-1610 CELL
rfields@peninsulaland.com

PARKER FIELDS
(650) 327-2014 OFFICE
(650) 208-9979 CELL
parker@peninsulaland.com

LOIS QUILALANG
(650) 327-2014 OFFICE
(510) 798-0336 CELL
lois@peninsulaland.com

CASDON JARDINE
(650) 327-2014 OFFICE
(408) 358-1578 CELL
casdon@peninsulaland.com



Property **Highlights**

1850 Gateway



Easy access to Highways
92 & 101



13 Minutes to SFO
and 30 from SJC Airport



Ample Parking



All New Shared Spaces



Seven-story Building



6 Minutes to Hayward
Park Station



80+ Dining & Retail
Options Nearby



Class A Building



Suite 205

1850 Gateway

3,274 ft²

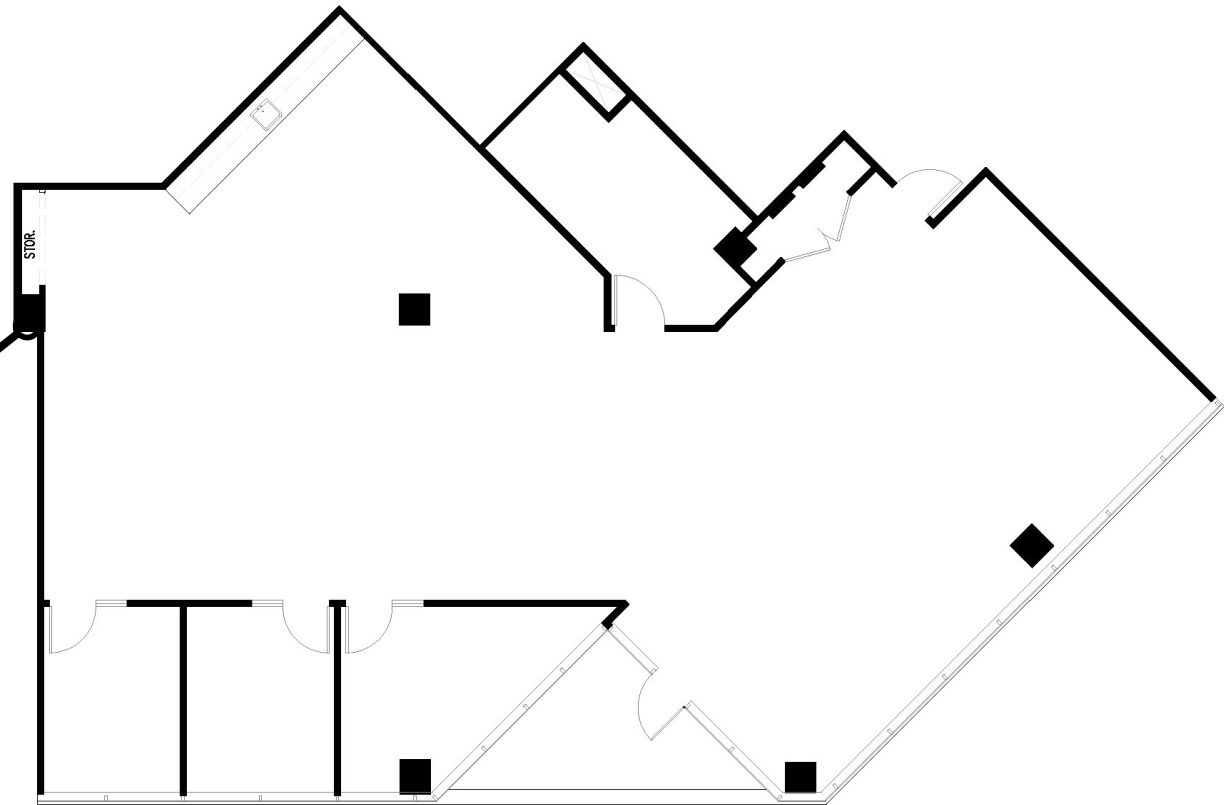
Floor Plan

1850 Gateway

Suite 205

Highlights

- 3,274 ft²
- 3 Private Office
- Break Room
- IDF
- Open Office Space





Suite 250

1850 Gateway

10,095 ft²

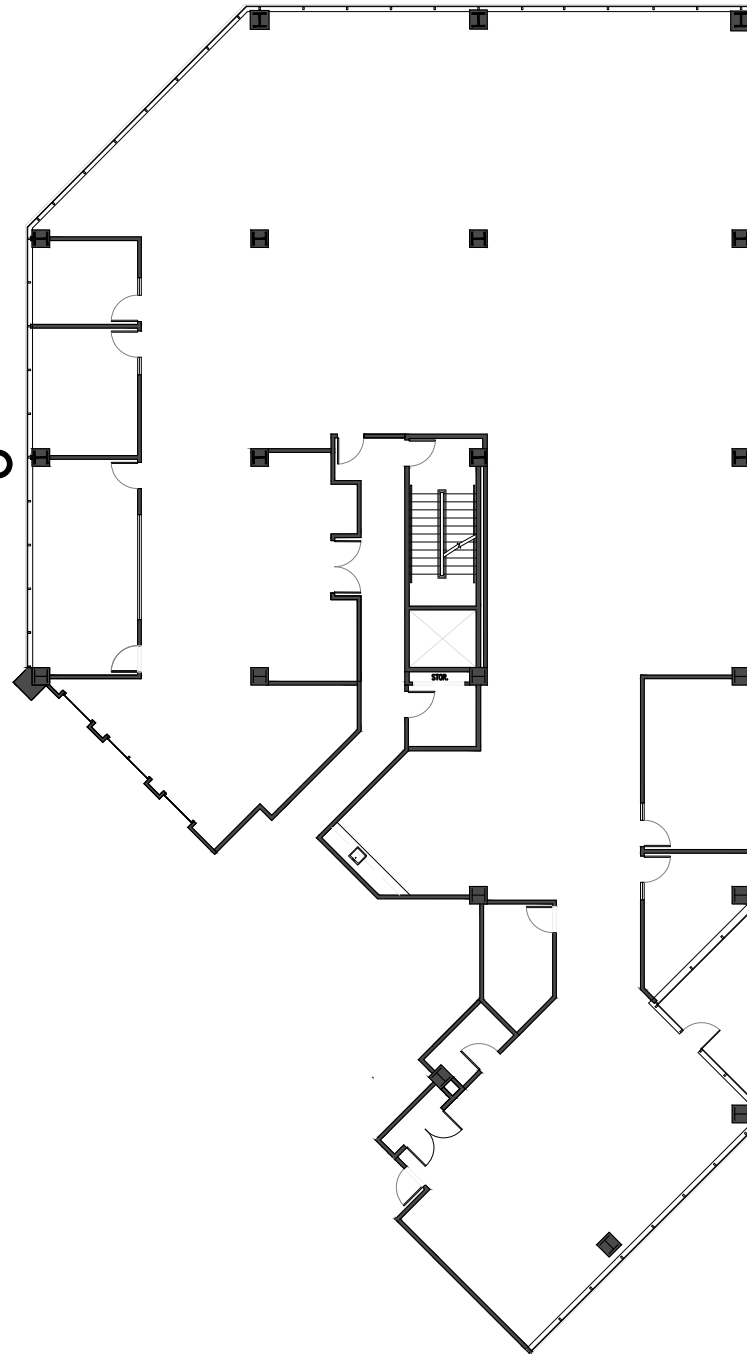
Floor Plan

1850 Gateway

Suite 250

Highlights

- 10,095 ft²
- 3 Private Offices
- 2 Conference Rooms
- Open Office Space
- Storage
- Copy/Archive Room



view tour | 400



4th Floor

1850 Gateway

14,074 ft²

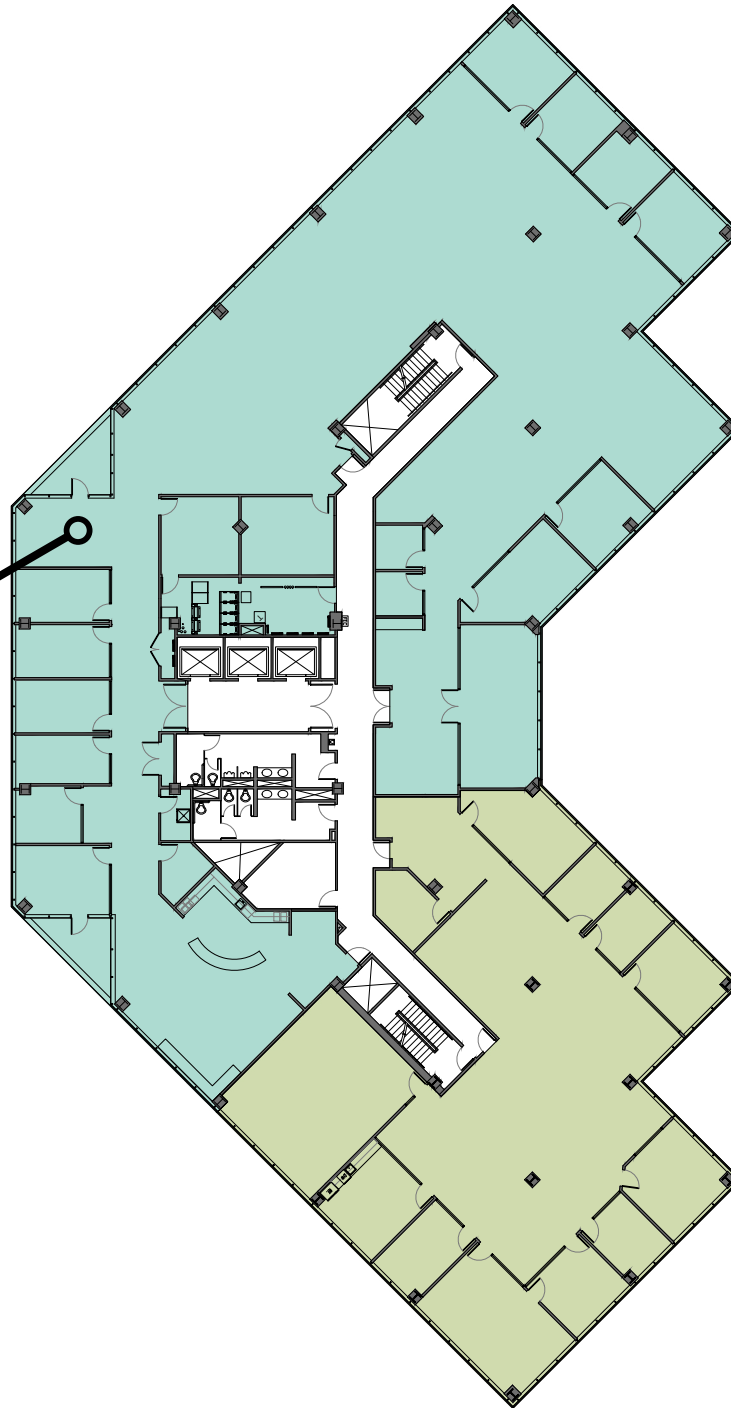
Floor Plan

1850 Gateway

4th Floor

Highlights

- 14,074 ft²
- Kitchen/Break Room
- Open Office
- 12 Private Offices
- 2 Conference Rooms
- Lobby
- Phone Room
- IT Room
- Storage



view tour



5th Floor

1850 Gateway

20,790 ft²

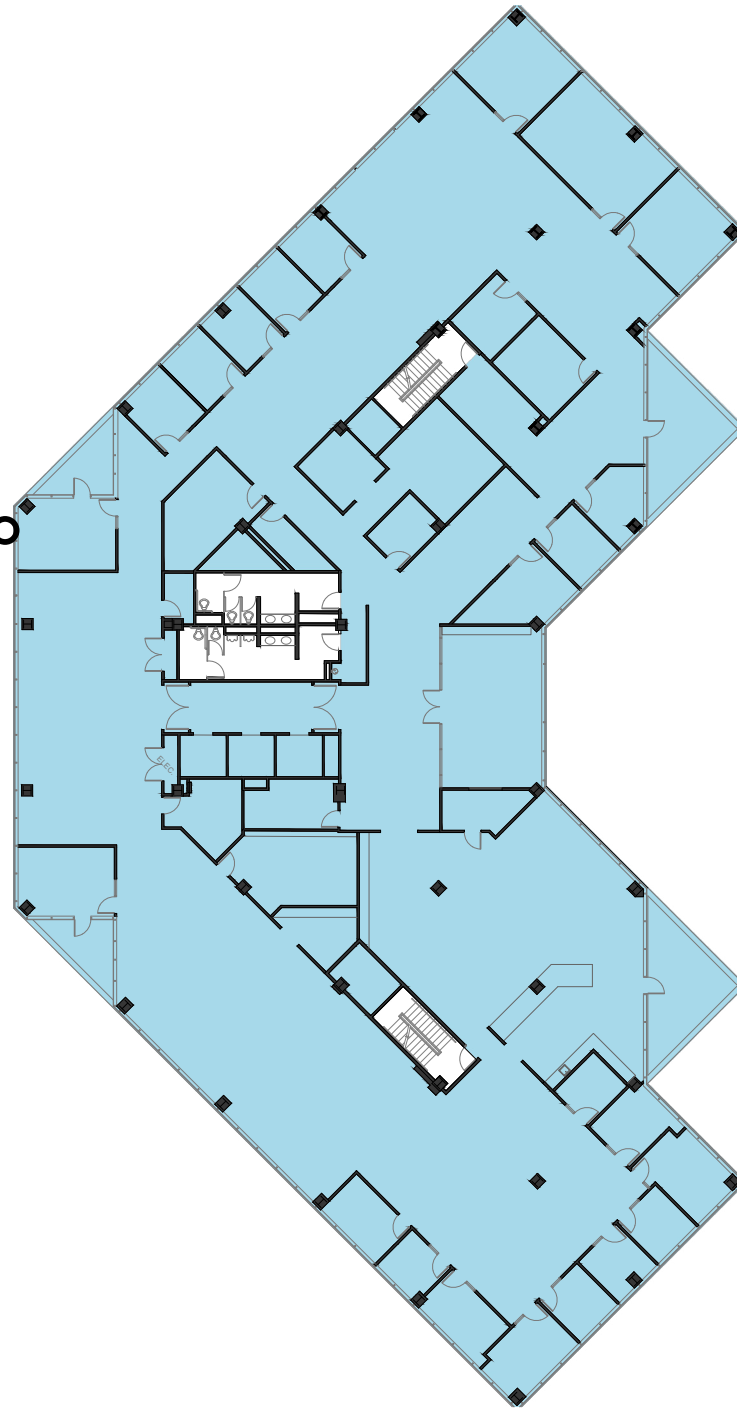
Floor Plan

1850 Gateway

5th Floor

Highlights

- **20,790 ft²**
- Kitchen/Break Room
- Open Office
- 23 Private Offices
- 3 Conference Rooms
- Mother's Room
- Copy Room
- Archive
- IT Room
- Storage



Photos

1850 Gateway
Suite 100



Surrounding Amenities

1850 Gateway



BRIDGE SHOPPING
WORLD MARKET
STARBUCKS
TOTAL WINE
MARSHALLS
TARGET
ULTA

HOTEL

HOME
DEPOT

HOTEL

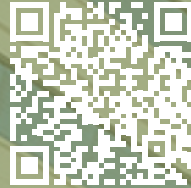
COSTCO

SAFeway

1850
GATEWAY

BANK

TOUR | SUITE 200A



TOUR | SUITE 400



TOUR | SUITE 500



For additional information, please
reach out to the listing team:

ROGER FIELDS
(650) 327-2014 OFFICE
(650) 207-1610 CELL
rfields@peninsulaland.com

PARKER FIELDS
(650) 327-2014 OFFICE
(650) 208-9979 CELL
parker@peninsulaland.com

LOIS QUILALANG
(650) 327-2014 OFFICE
(510) 798-0336 CELL
lois@peninsulaland.com

CASDON JARDINE
(650) 327-2014 OFFICE
(408) 358-1578 CELL
casdon@peninsulaland.com

www.peninsulaland.com

© 2021 Peninsula Land & Capital | 2390 El Camino Real, Suite 210 | Palo Alto, CA 94306 | 650-327-2014

This information supplied herein is from sources we deem reliable. It is provided without any representation, warranty, or guarantee, expressed or implied as to its accuracy. Prospective Buyer or Tenant should conduct an independent investigation and verification of all matters deemed to be material, including, but not limited to, statements of income and expenses. Consult your attorney, accountant, or other professional advisor.