



**CBRE**

**CLASS "A" MEDICAL  
OFFICES FOR LEASE**

**7930**

**8008**

**8010**



**FROST STREET MEDICAL CENTER**

SAN DIEGO CA 92123



## PROPERTY HIGHLIGHTS

7930



8008



8010



- Class "A" Medical Office Project
- 862 SF - 9,266 SF Available
- Lease Rate: Negotiable
- Part of a 3-building medical office campus totaling 174,506 SF
- Adjacent to Rady Children's Hospital, Sharp Memorial Hospital, and Mary Birch Hospital for Women
- Easy access to both I-805 and Highway 163
- Structure, surface and reserve parking with attendants from \$45 per month
- On-site professional property management
- Tenant mix includes: Rady Children's Medical Group, Sharp Medical, Lab, etc.

# AVAILABILITIES

7930

8008

8010

## 7930 FROST STREET

SUITE	STATUS	SIZE (SF)
Suite 206	Vacant	3,786
Suite 404	Vacant	1,108
Suite 401/407	Vacant	4,829

## 8008 FROST STREET

SUITE	STATUS	SIZE (SF)
Suite 250	Vacant	4,594
Suite 400*	Vacant	2,489
Suite 406	Vacant	1,612
Suite 407*	Vacant	2,054

\*Contiguous to 4,543 SF

## 8010 FROST STREET

SUITE	STATUS	SIZE (SF)
Suite 100	Vacant	1,500
Suite 400	Vacant	2,997
Suite 414	Vacant	3,130
Suite 501A	Vacant	862
Suite 600*	Vacant	3,136
Suite 602*	Vacant	6,130

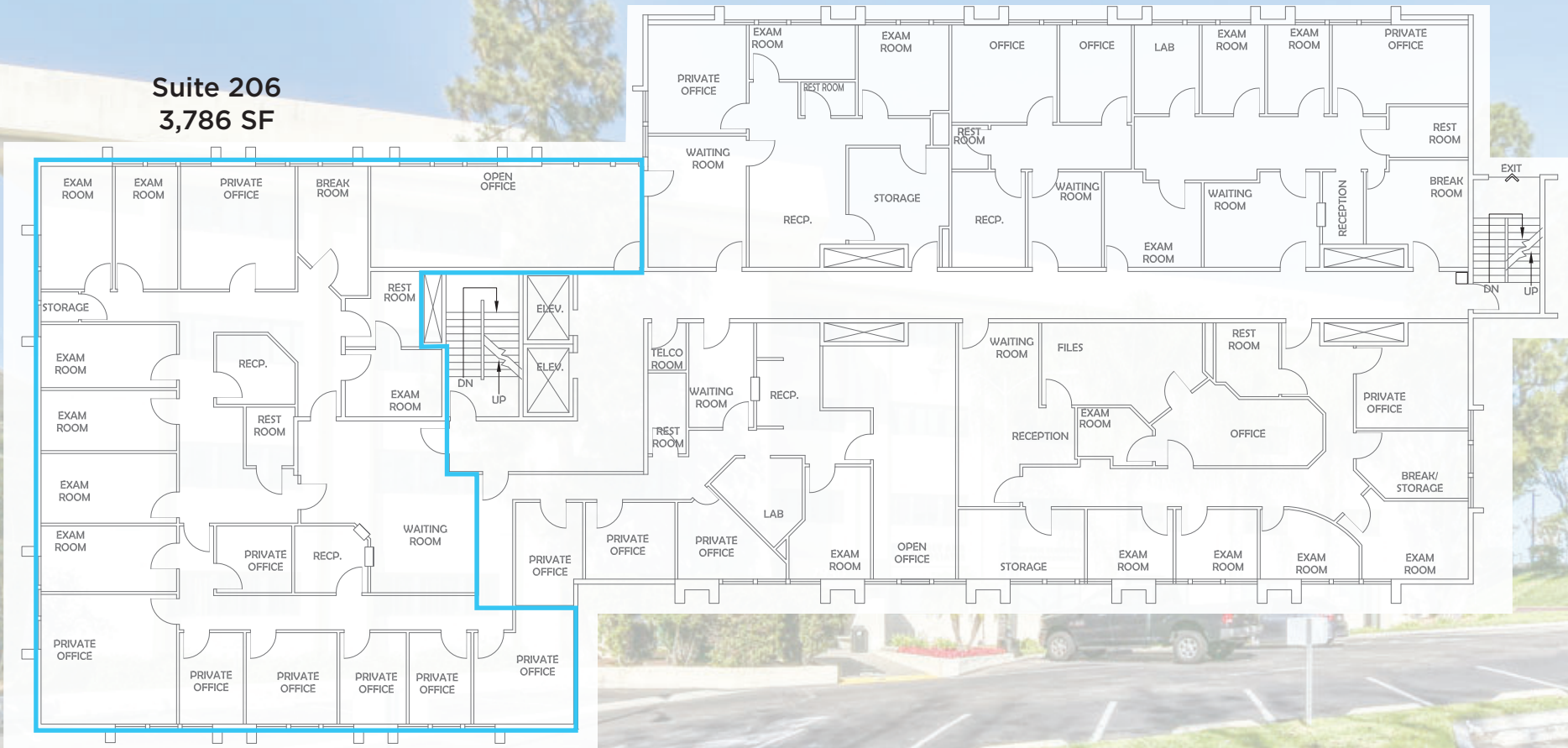
\*Contiguous to 9,266 SF



# FLOOR 2

7930 FROST STREET | FLOOR 2  
STE 206; 3,786 SF

**Suite 206**  
**3,786 SF**



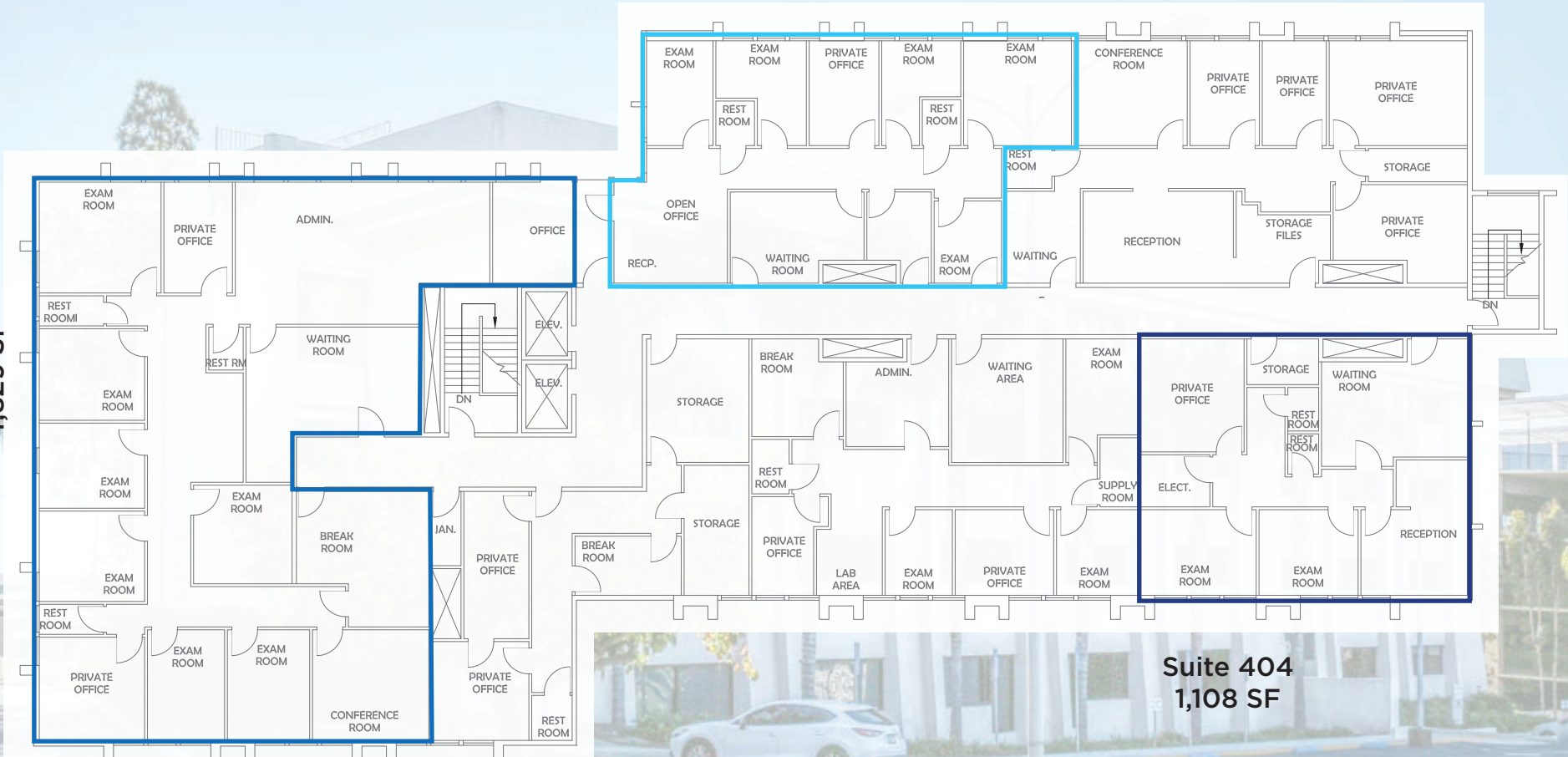
# FLOOR 4

7930 FROST STREET | FLOOR 4  
STE 404; 1,108 SF | STE 401/407; 4,829 SF

Suite 407  
4,829 SF

Suite 401

Suite 404  
1,108 SF

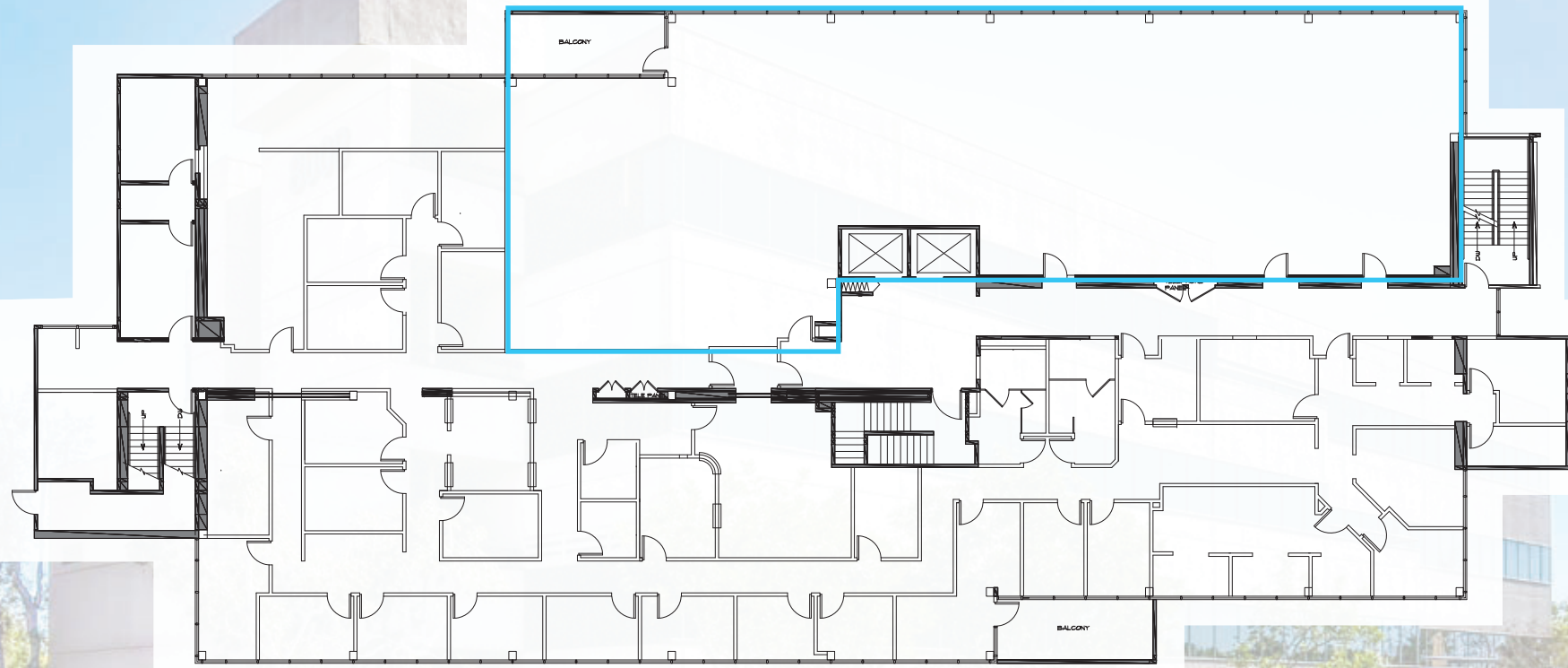




FLOOR 2

8008 FROST STREET | FLOOR 2  
STE 250; 4,594 SF IN SHELL CONDITION

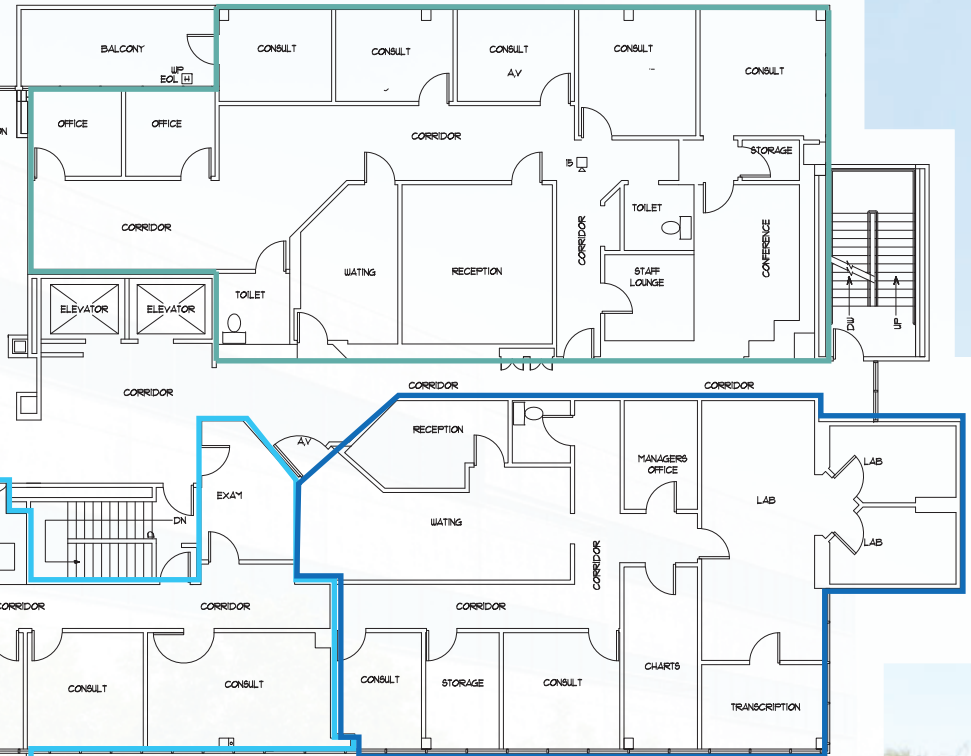
Suite 250  
4,594 SF



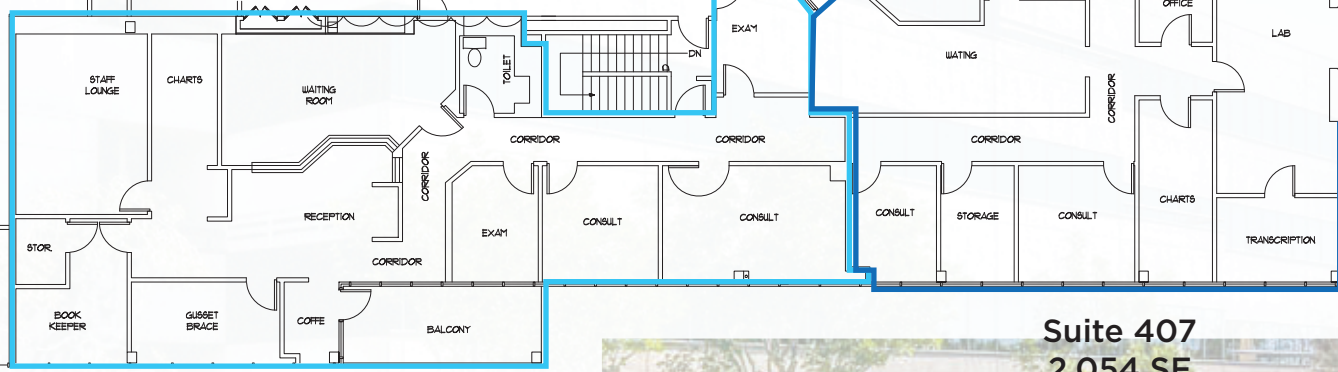
# FLOOR 4

8008 FROST STREET | FLOOR 4  
STE 400; 2,489 SF | STE 406; 1,612 SF | STE 407; 2,054 SF

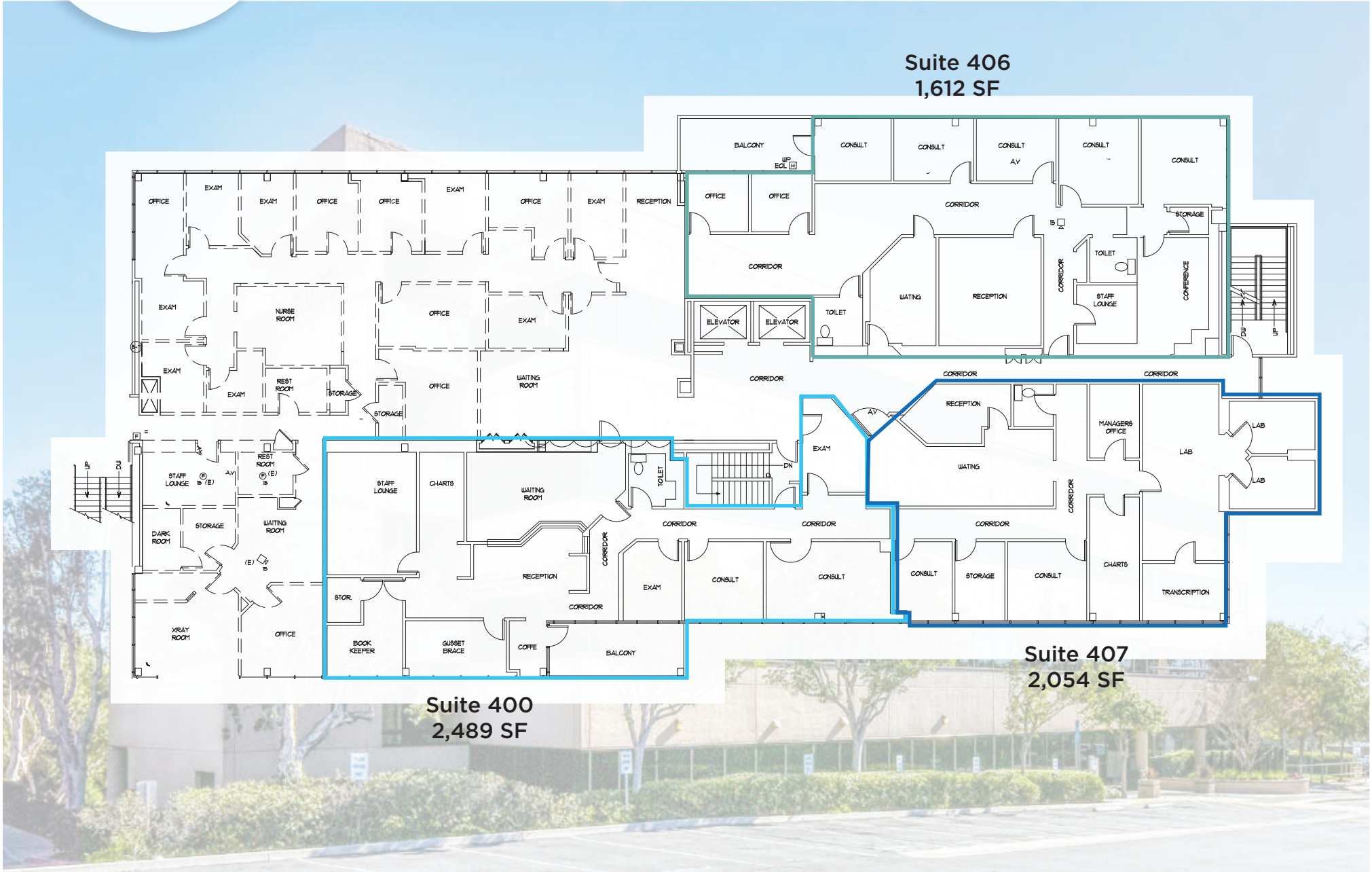
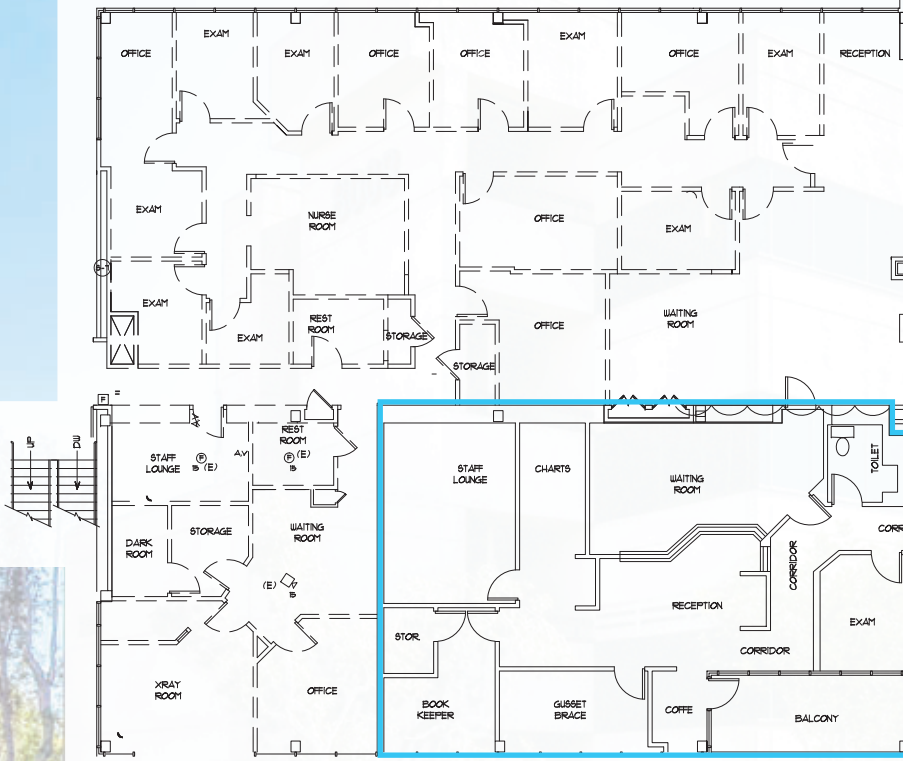
**Suite 406**  
1,612 SF



**Suite 407**  
2,054 SF



**Suite 400**  
2,489 SF





# FLOOR 1

8010 FROST STREET | FLOOR 1  
STE 100; 1,500 SF

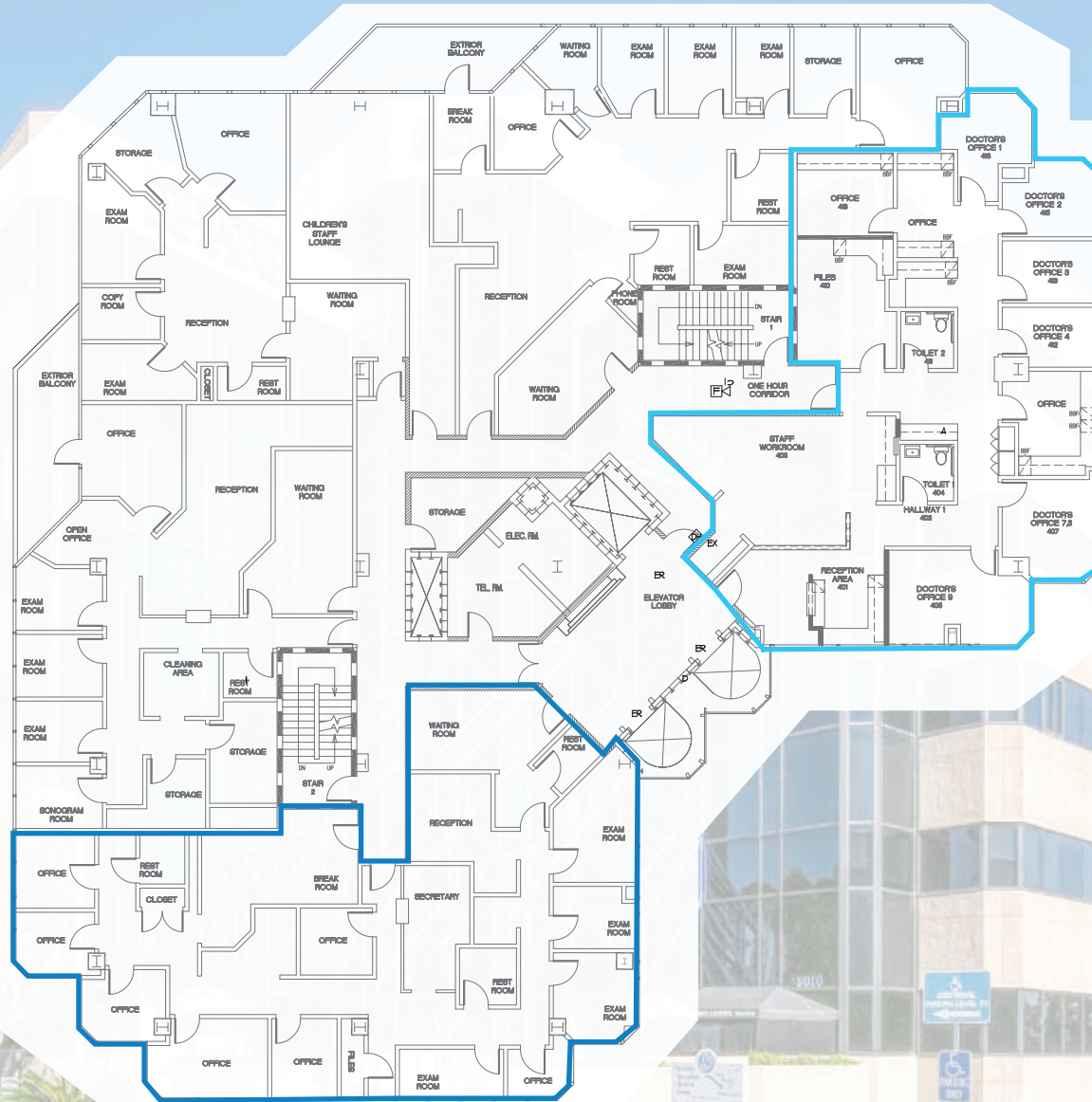


Suite 100  
1,500 SF



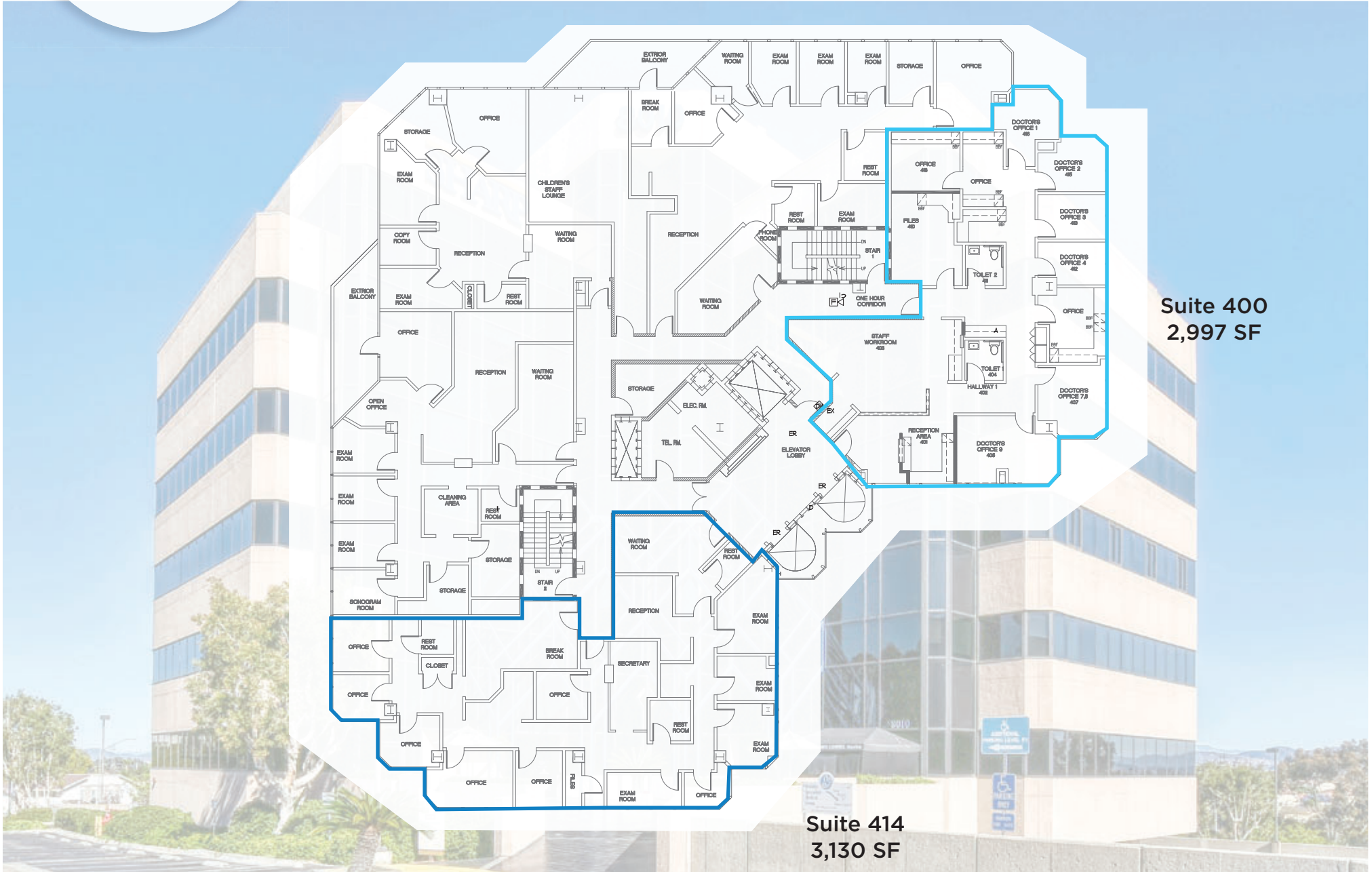
# FLOOR 4

8010 FROST STREET | FLOOR 4  
STE 400; 2,997 SF | STE 414; 3,130 SF



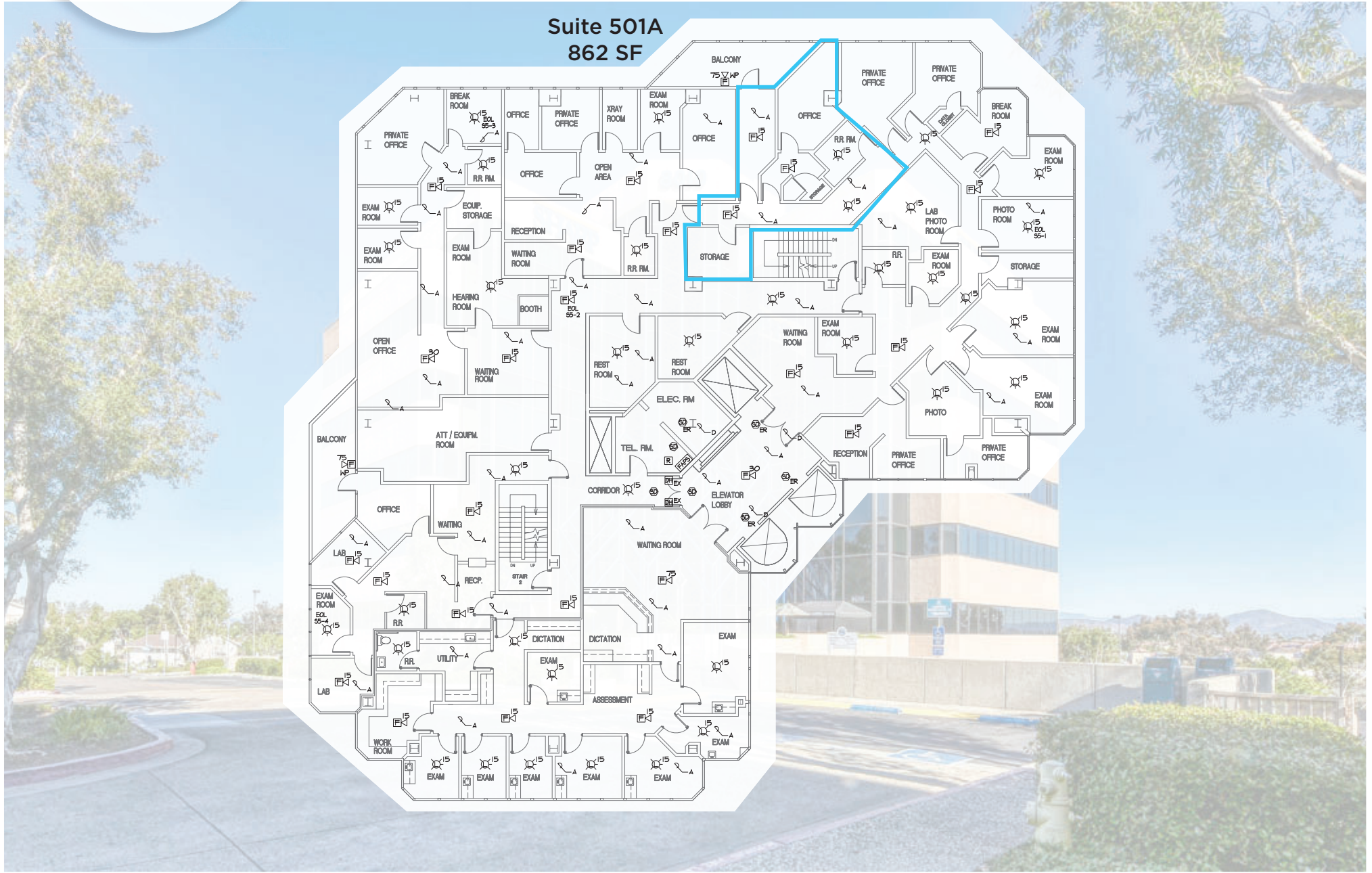
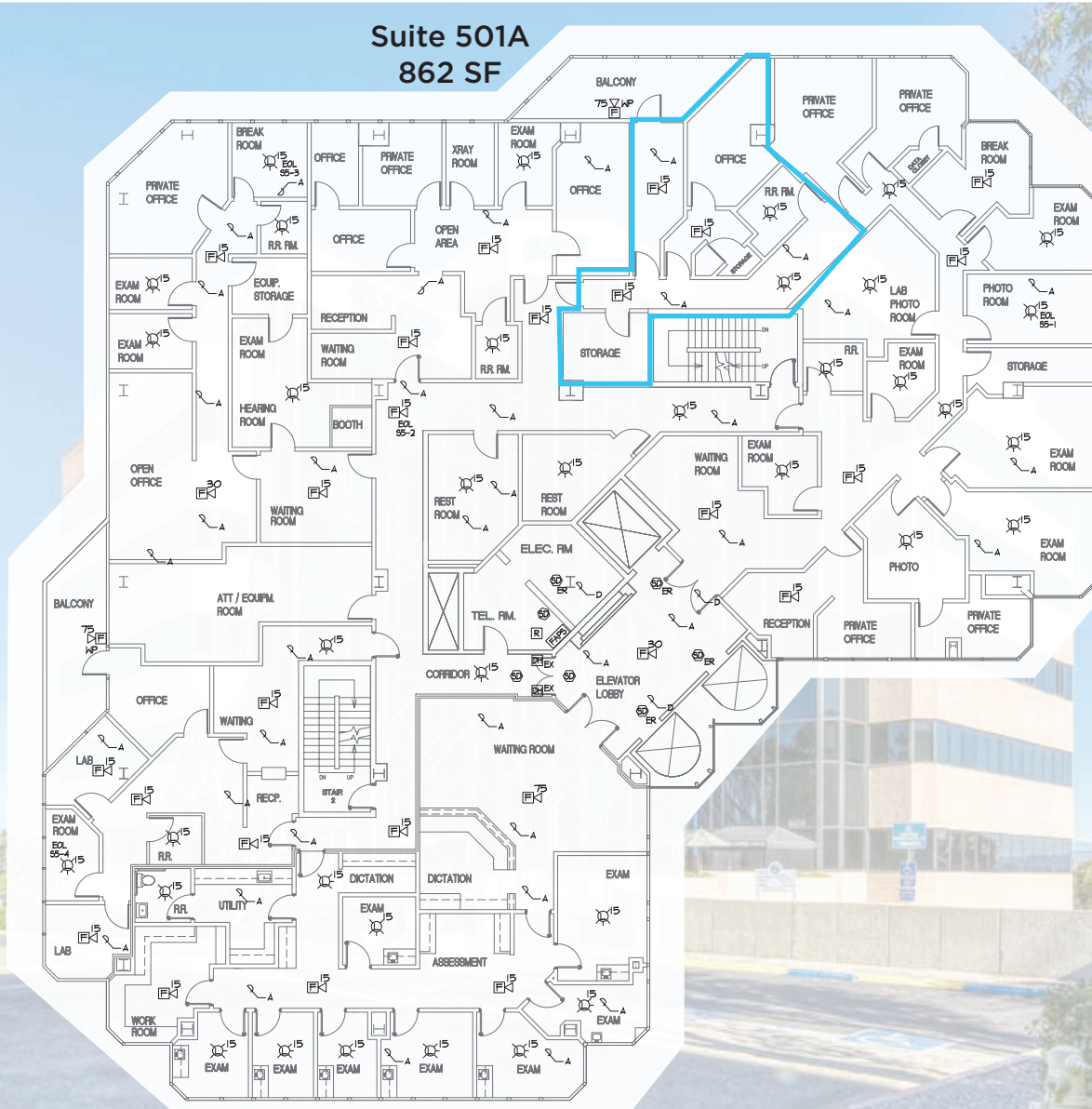
**Suite 400**  
**2,997 SF**

**Suite 414**  
**3,130 SF**



# FLOOR 5

8010 FROST STREET | FLOOR 5  
STE 501A; 862 SF



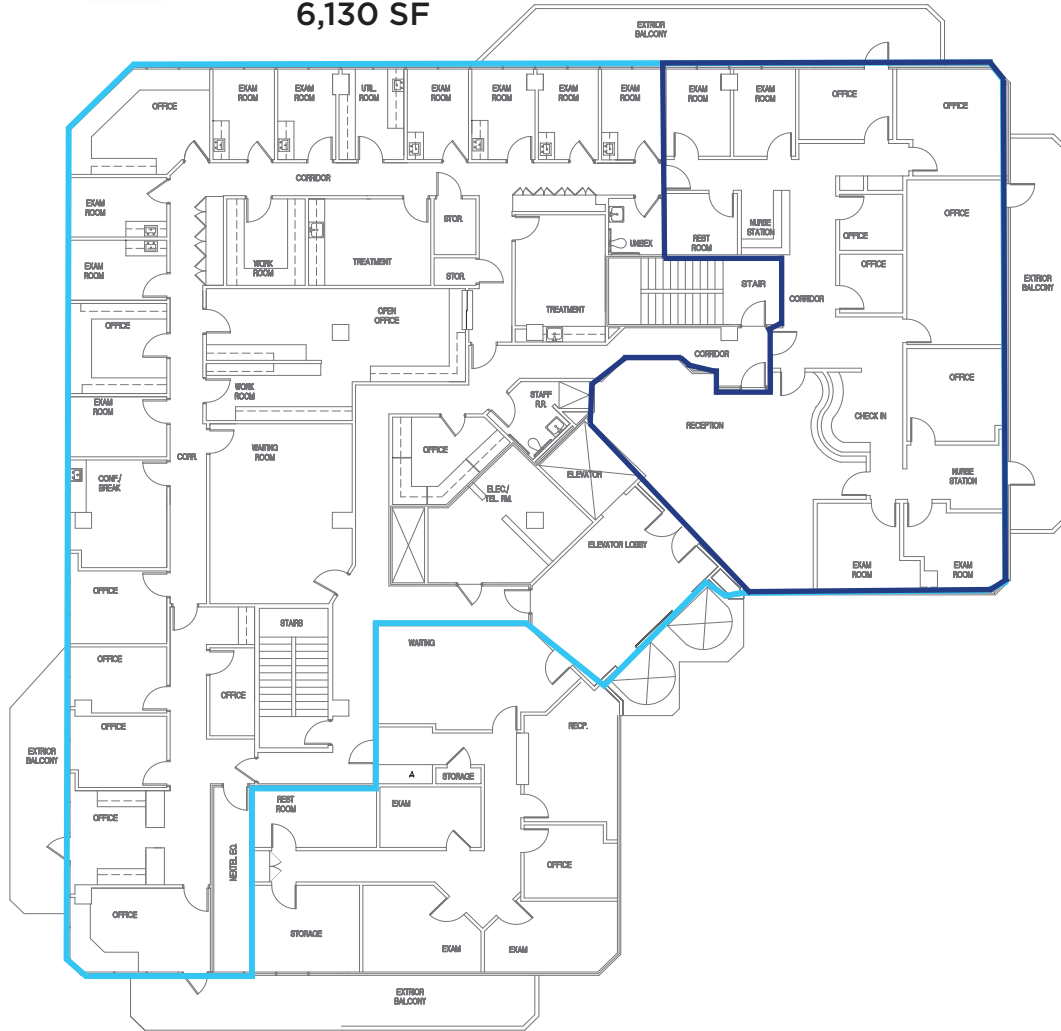


# FLOOR 6

8010 FROST STREET | 6TH FLOOR  
STE 600\*; 3,136 SF | STE 602\*; 6,130 SF

\*Contiguous to 9,266 SF

**Suite 602  
6,130 SF**



**Suite 600  
3,136 SF**





# NEARBY HOSPITALS

FROST ST. MEDICAL CENTER

Kaiser Permanente Clairemont Mesa

Sharp Memorial Hospital

Mary Birch Hospital for Women

Rady Children's Hospital

Sharp Mesa Vista Hospital

Lars Eisenhauer  
Vice President  
Lic. 01372911  
+1 760 438 8534  
lars.eisenhauer@cbre.com

Dan Henry  
Vice President  
Lic. 02035998  
+1 760 438 8569  
dan.henry@cbre.com

**CBRE**

© 2019 CBRE, Inc. All rights reserved. This information has been obtained from sources believed reliable, but has not been verified for accuracy or completeness. You should conduct a careful, independent investigation of the property and verify all information. Any reliance on this information is solely at your own risk. CBRE and the CBRE logo are service marks of CBRE, Inc. All other marks displayed on this document are the property of their respective owners, and the use of such logos does not imply any affiliation with or endorsement of CBRE. Photos herein are the property of their respective owners. Use of these images without the express written consent of the owner is prohibited. PMStudio\_June