

227  
WEST 17TH STREET

BETWEEN SEVENTH AND EIGHTH AVENUE

THIRD FLOOR COMMERCIAL  
CO-OP UNIT FOR SALE

CHELSEA, NEW YORK, NY



THE DANA COMMERCIAL TEAM  
EST. 1911  
**Douglas Elliman**  
REAL ESTATE



# PROPERTY DETAILS

## PREMISES

Entire 3rd Floor; Unit 3: 5,040 square feet

## BLOCK & LOT

1-00767-0019

## ZONING

C6-2A

## ENTRANCE

Keyed Elevator with Voice Intercom System

## POSSESSION

Immediate

## CEILINGS

10 Feet

## DESIGN

Located in the heart of Chelsea and within close proximity to world-class galleries and top-rated restaurants, as well as the Meatpacking District, Chelsea Market, the High Line and Google headquarters, this nearly 5,000-square-foot, full-floor loft has the potential to be converted to residential use. On the third floor of this historic, 1910 loft building, the unit features 10-foot ceilings, a row of 14 oversized, southern-facing windows and a private vestibule. 227 West 17th Street is a boutique, mixed-use cooperative building w/ a keyed elevator and voice-intercom system.

## FEATURES

- 10 Foot Ceilings
- Southern Facing Windows with Ample Amounts of Natural Light
- Keyed Elevator
- Voice Intercom System
- Potential to be Converted to Residential Use

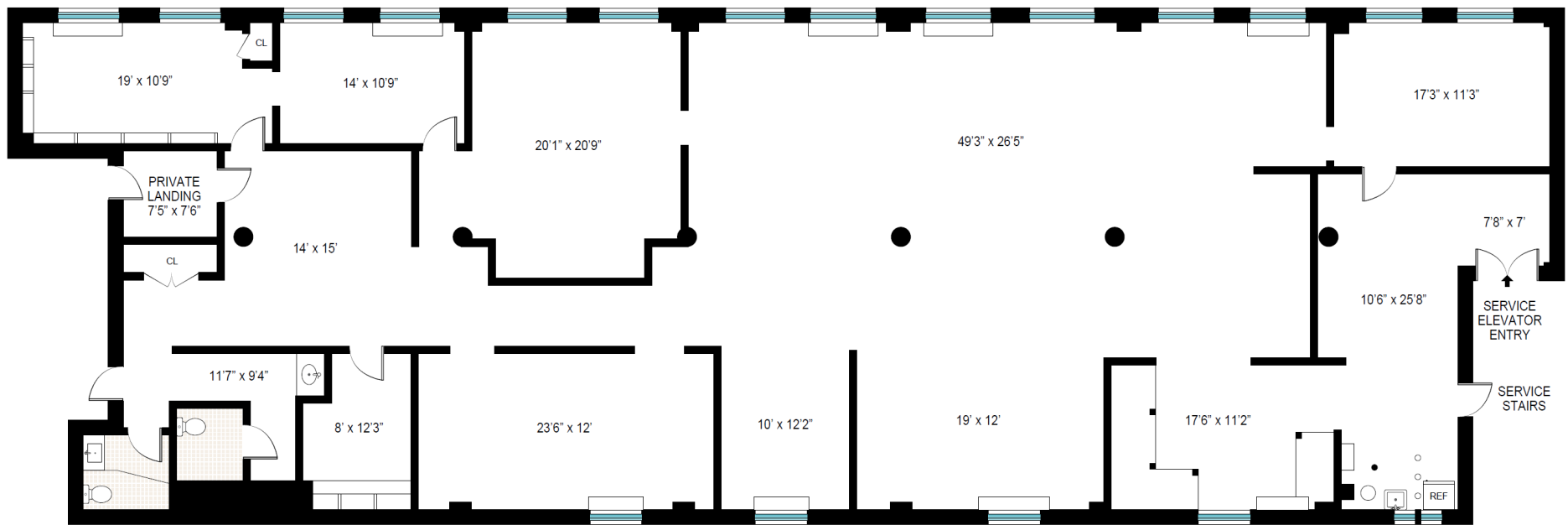
## ASKING PRICE

4.2.million

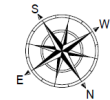
# 227 WEST 17TH STREET

BETWEEN SEVENTH AND EIGHTH AVENUE





LOT LINE WINDOWS



FOR COMMERCIAL SHOWINGS, CONTACT:

**THE DANA COMMERCIAL TEAM**  
AT DOUGLAS ELLIMAN REAL ESTATE

**RICK DANA**  
917-952-0624  
[rdana@elliman.com](mailto:rdana@elliman.com)

**GARY DANA**  
516-946-7207  
[gdana@elliman.com](mailto:gdana@elliman.com)

FOR RESIDENTIAL SHOWINGS, CONTACT:

**THOMAS ENNIS**  
917.912.7071  
[tennis@elliman.com](mailto:tennis@elliman.com)

575 MADISON AVENUE, NY, NY 10022. 212.891.7000 © 2023 DOUGLAS ELLIMAN REAL ESTATE. ALL MATERIAL PRESENTED HEREIN IS INTENDED FOR INFORMATION PURPOSES ONLY. WHILE, THIS INFORMATION IS BELIEVED TO BE CORRECT, IT IS REPRESENTED SUBJECT TO ERRORS, OMISSIONS, CHANGES OR WITHDRAWAL WITHOUT NOTICE. ALL PROPERTY INFORMATION, INCLUDING, BUT NOT LIMITED TO SQUARE FOOTAGE, ROOM COUNT, NUMBER OF BEDROOMS AND THE SCHOOL DISTRICT IN PROPERTY LISTINGS SHOULD BE VERIFIED BY YOUR OWN ATTORNEY, ARCHITECT OR ZONING EXPERT. IF YOUR PROPERTY IS CURRENTLY LISTED WITH ANOTHER REAL ESTATE BROKER, PLEASE DISREGARD THIS OFFER. IT IS NOT OUR INTENTION TO SOLICIT THE OFFERINGS OF OTHER REAL ESTATE BROKERS. WE COOPERATE WITH THEM FULLY. EQUAL HOUSING OPPORTUNITY.

