

Brainerd Market Center

480 Greenway View Dr, Chattanooga TN 37411

FOR LEASE



Suite 119
1,600 SF



Danny's
Nails

it's fashion metro

Suite 108
1,600 SF

Suite 106
2,800 SF



Suite 101
2,800 SF

GameStop

CATO



Contact Us

Natalie Hostetler
Vice President
+1 423 290 2141
natalie.hostetler@cbre.com

Russell Elliott, SIOR, CCIM
Senior Vice President
+1 423 413 6767
russell.elliott@cbre.com

Retail | For Lease

CBRE

480 Greenway View Drive

Chattanooga, TN 37411



Contact Us

Natalie Hostetler

Vice President

+1 423 290 2141

natalie.hostetler@cbre.com

Russell Elliott, SIOR, CCIM

Senior Vice President

+1 423 413 6767

russell.elliott@cbre.com

Property Overview

Walmart Supercenter Shadow – Adjacent to a high performing corporate owned Walmart Supercenter.

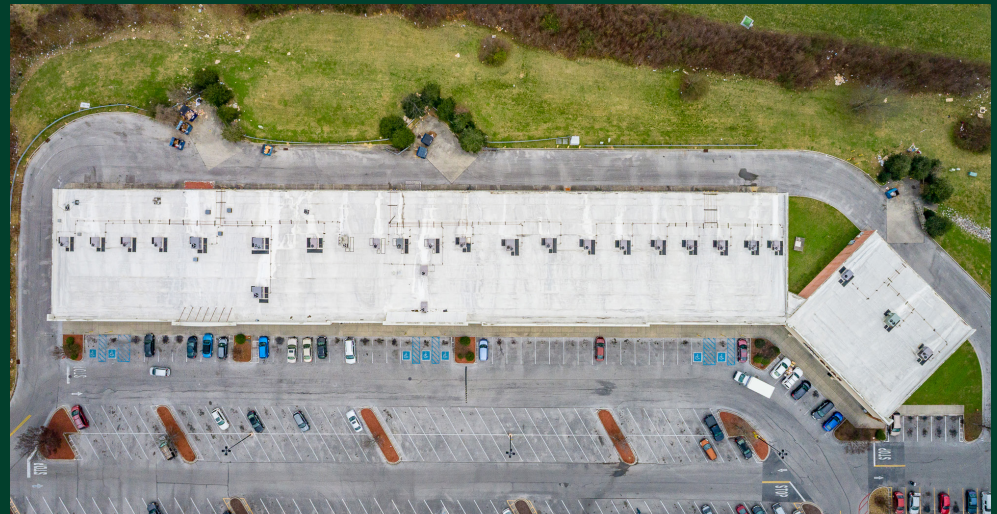
National Tenant Roster – Brainerd Market Center is leased to national, regional, and local retailers such as Dollar Tree, Cato, It's Fashion, and City Gear.

Location and Growth – Brainerd Market Center is neighbored by the extensively renovated Eastgate Town Center, a mixed use city center with retail and office uses in the geographical heart of Chattanooga. The nearby Sofia's Place is an award winning multifamily development that was recently delivered featuring 56 new townhomes with modern two and three bedroom units, creating additional foot traffic to Brainerd Market Center.

Long Term Tenancy – With an average tenant tenure of 12.5 years and several in place since inception, Brainerd Market Center boasts a stable in-place occupancy with substantial upside in leasing.

Key Features

- Year Built: 2004
- Total Building SF: 44,797
- Construction Type: Concrete Block
- Zoning: C-C (Commercial)
- Lot Size: 5.35 AC



© 2026 CBRE, Inc. All rights reserved. This information has been obtained from sources believed reliable, but has not been verified for accuracy or completeness. You should conduct a careful, independent investigation of the property and verify all information. Any reliance on this information is solely at your own risk. CBRE and the CBRE logo are service marks of CBRE, Inc. All other marks displayed on this document are the property of their respective owners, and the use of such logos does not imply any affiliation with or endorsement of CBRE. Photos herein are the property of their respective owners. Use of these images without the express written consent of the owner is prohibited.