

230,978 SF | 20 ACRES

BRICKYARD RD

Permit Ready Q1 2023 | For Lease or Build-to-Suit | Zoned Heavy Industrial (M-2)



Brickyard Road | Dalton (Whitfield County), GA

STATE OF THE ART FEATURES

- 230,978 SF Rear-Load (300' x 770')
- 36' Clear Height
- 54' x 48' Typical Column Spacing with 60' Speed Bays
- 7" Thick 4,000 psi Unreinforced Floor Slab
- ESFR Sprinkler System (Meets FM Standards)
- Power: 277/480 Volt, 3 Phase, 4 Wire, 2,000 Amp
- 60-mil TPO Roof with R-20 Roof Insulation for Cooler Warehouse Environment and 20-year NDL Warranty
- Clerestory Windows for Natural Lighting
- 41 (9' x 10') Dock Doors
- 2 (12' x 14') Ramped Drive-In Doors
- 185' Truck Court Depth
- 50 Trailer Spaces
- 311 Auto Parking Spaces

FOR MORE INFORMATION CONTACT:

Chris Knightly
978.460.2459
cknightly@cameronpropertyco.com

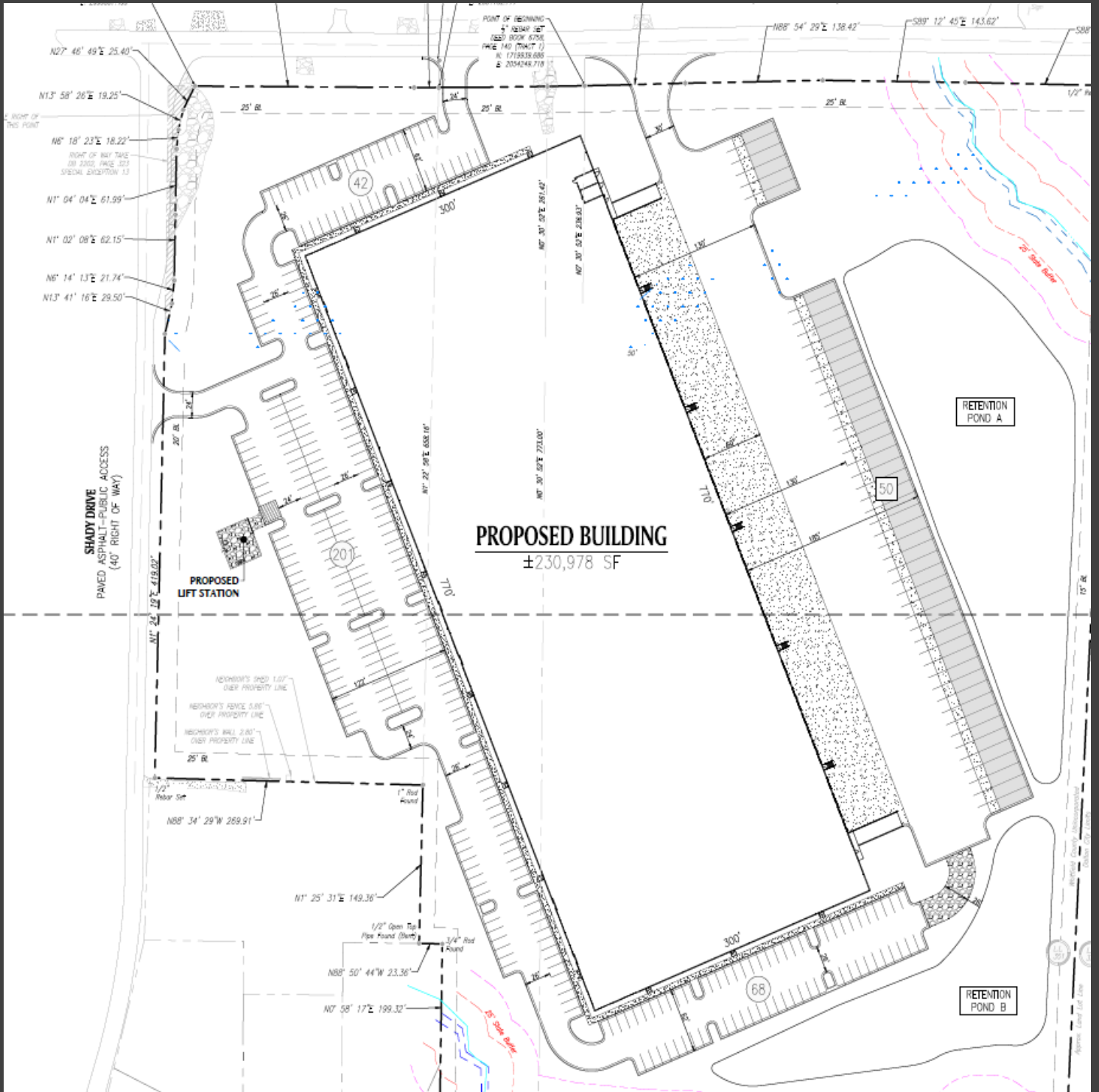


DRIVE DISTANCES

- I-75: 3.5 miles
- Appalachian Inland Port: 22.1 miles
- Chattanooga: 30.0 miles
- Atlanta CBD: 85.0 miles



BRICKYARD RD SITE PLAN



FOR MORE INFORMATION CONTACT:

Chris Knightly
978.460.2459

cknightly@cameronpropertyco.com



