

FOR SALE

The Narrows

Birmingham, AL 35242



Lightpoint

A Healthcare Real Estate Firm

Land Opportunity – The Narrows | Birmingham, AL

Property Highlights

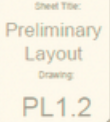
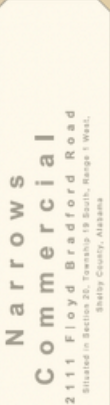
- Sales Price: \$1,299,000
- Parcel ID: 09-4-20-2-002-001.001
- Acreage: 2.77 Acres

PROPERTY CAN BE SUBDIVIDED

Positioned in the highly desirable Narrows corridor of Birmingham in Shelby County, this land offering presents a rare opportunity to acquire a well-located parcel in one of the area's most established and accessible submarkets.

The property consists of approximately ± 2.92 acres and is currently zoned B-2, allowing for a variety of commercial or service-oriented uses. With strong surrounding development and continued growth along the Highway 280 corridor, this site is well-positioned for future development.

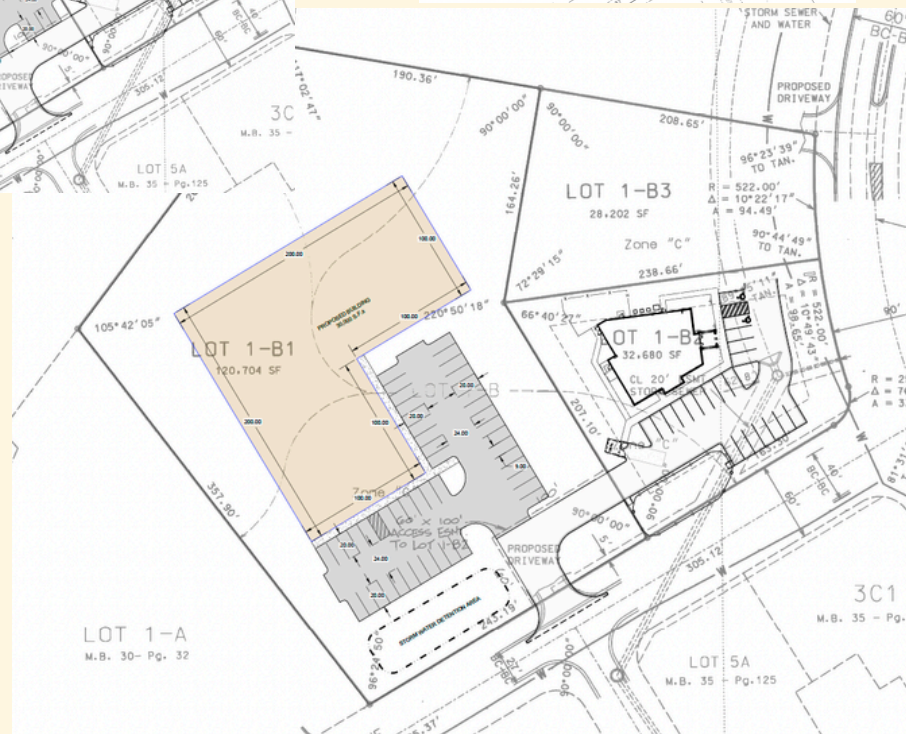
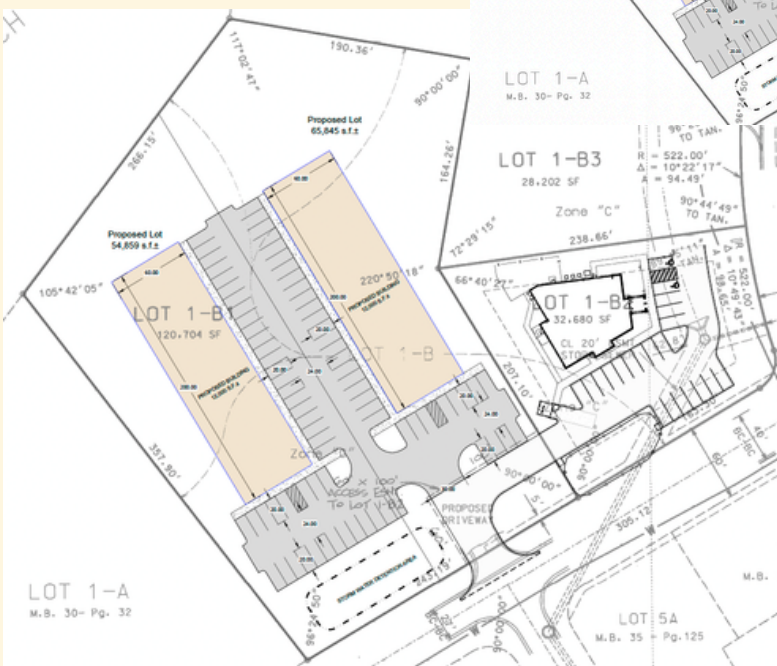
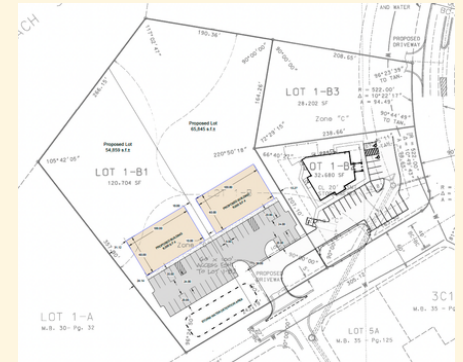
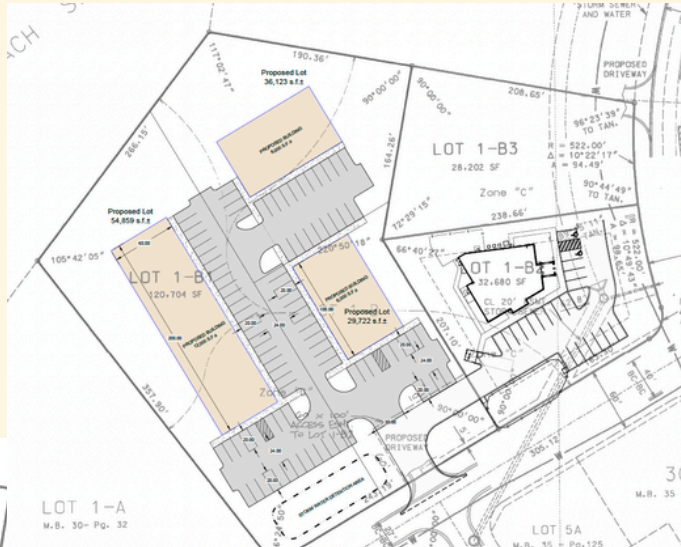
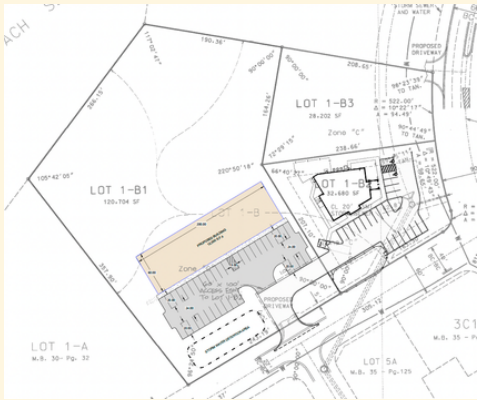
Surrounded by dense residential neighborhoods, national and local retailers, and professional services, the property offers excellent accessibility and visibility, making it an attractive option for investors, developers, or owner-users seeking a strategic location with long-term upside.



FOR SALE
The Narrows
Birmingham, AL 35242



Various preliminary site plans available upon request



Kyle Church | c: 205.919.1528 | e: kyle@lightpointcre.com

FOR SALE

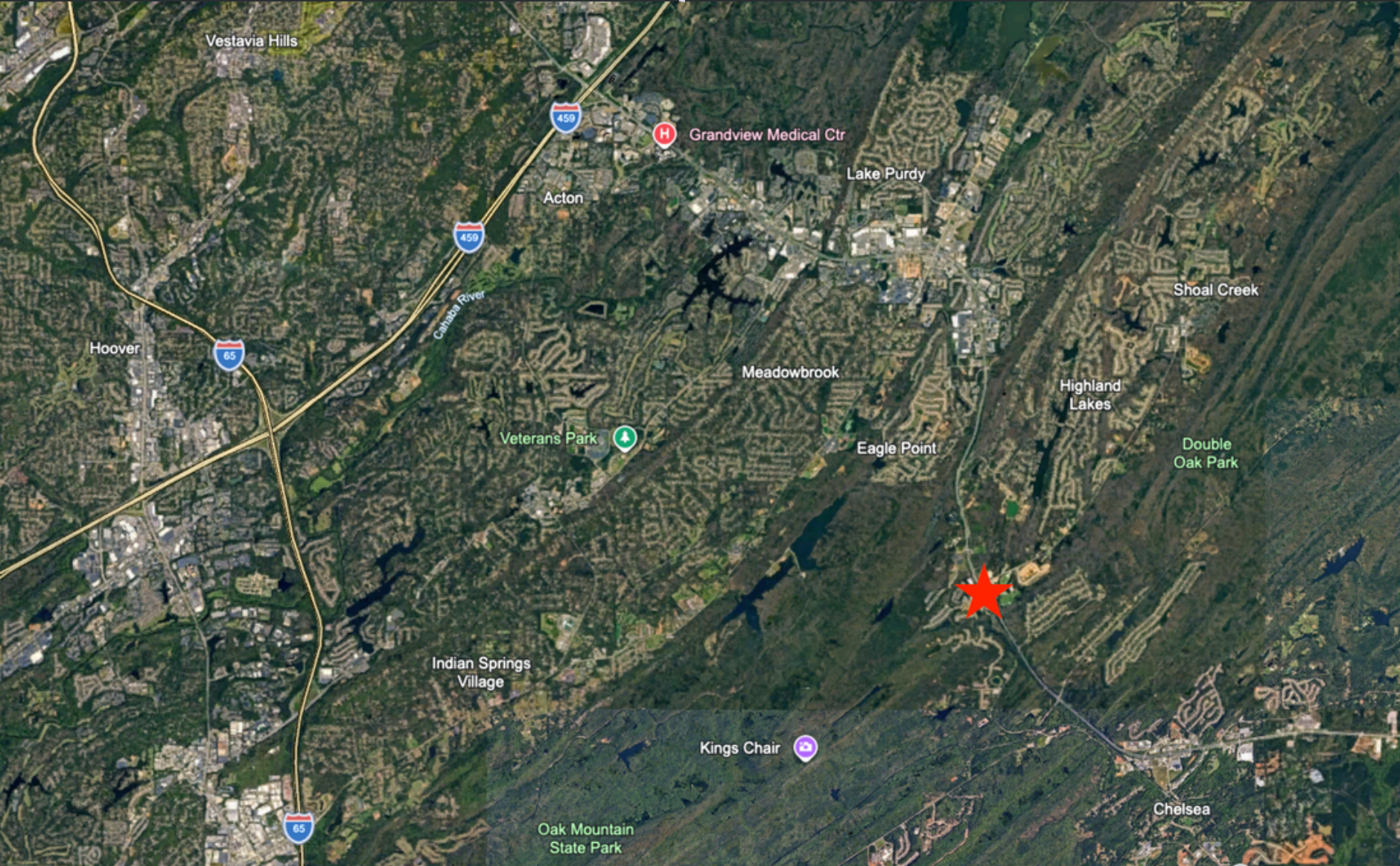
The Narrows

Birmingham, AL 35242



Lightpoint

A Healthcare Real Estate Firm



Kyle Church | c: 205.919.1528 | e: kyle@lightpointcre.com