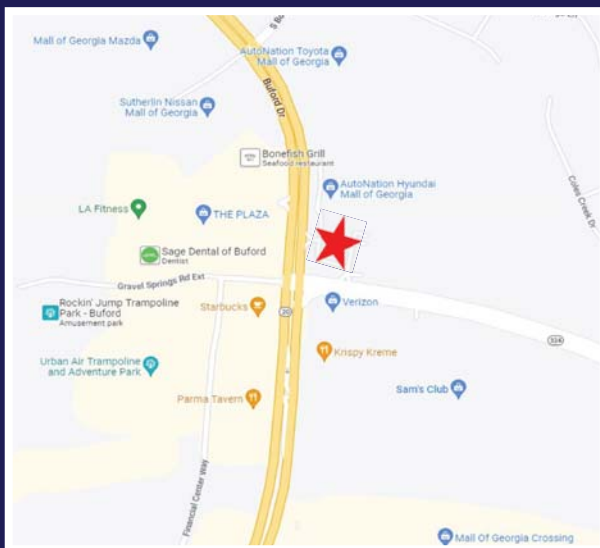


Medical Office For Lease

3425 Buford Drive
Buford, GA 30519
(Gwinnett County)



Space Available: 5,000sf
Lease Rate: \$22.00/sf (NNN) | \$6.25 OPEX



Property Details:

- Built Out Medical Suite Available Suite 100: 5,000sf
- Features X-Ray and MRI
- Existing Medical Tenants On-Site
Primary Care Dental
- Excellent Visibility on Buford Drive with Monument Signage
- Immediate Access to I-985
- Proximity to Northeast Georgia Health System Physicians and Braselton Hospital

For more information, please contact:

Michael Ulin

(c) 404-966-6698

(o) 770-393-2006

mulin@rg-re.com

Jay Hammond

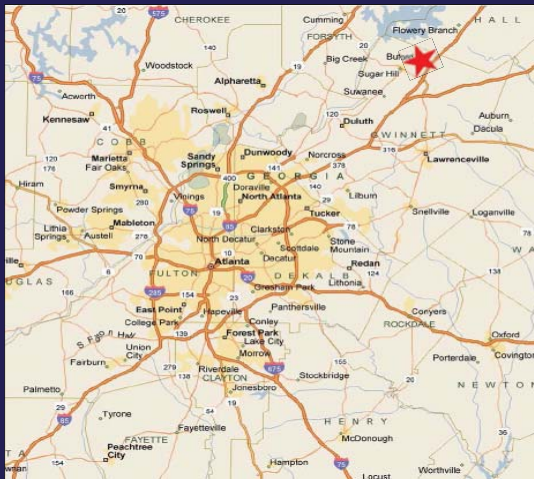
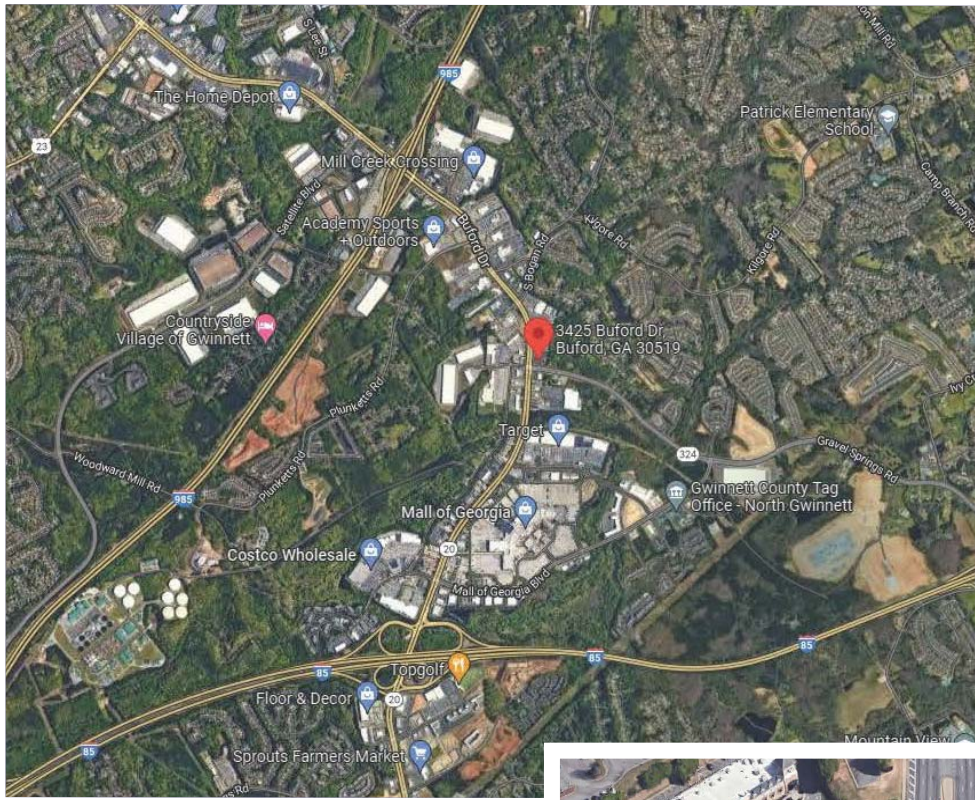
(c) 404-840-6225

(o) 770-393-2006

jhammond@rg-re.com



3425 Buford Drive



For more information, please contact:

Michael Ulin

(c) 404-966-6698

(o) 770-393-2006

mulin@rg-re.com

Jay Hammond

(c) 404-840-6225

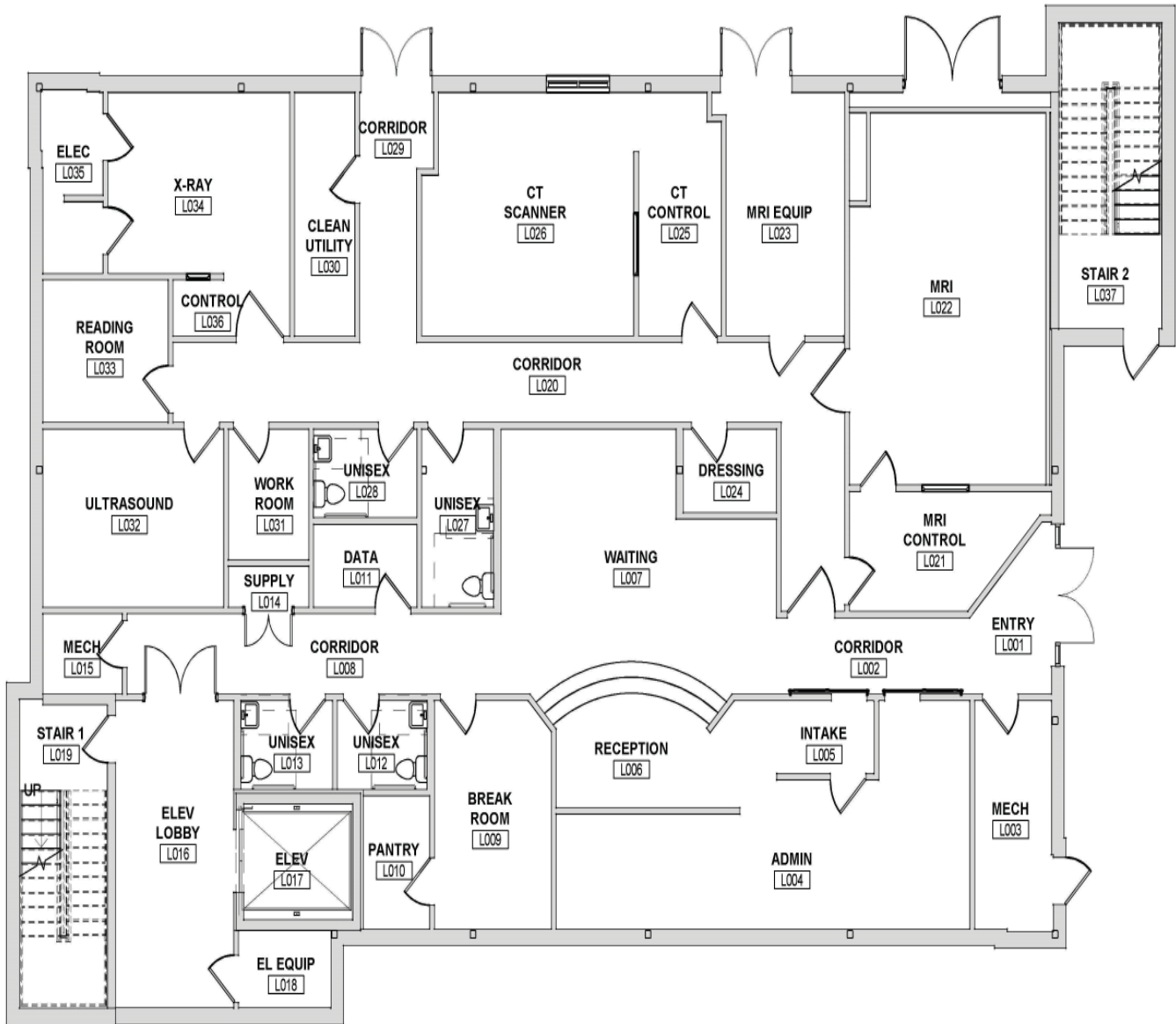
(o) 770-393-2006

jhammond@rg-re.com



3425 Buford Drive

Lower Level Floor Plan



1 LOWER LEVEL FLOOR PLAN
EX-1 1/8" = 1'-0"

For more information, please contact:

Michael Ulin

(c) 404-966-6698
(o) 770-393-2006
mulin@rg-re.com

Jay Hammond

(c) 404-840-6225
(o) 770-393-2006
jhammond@rg-re.com

