

FOR LEASE

2401 S. GULLEY RD.
DEARBORN, MICHIGAN



IMMEDIATE OCCUPANCY

PROPERTY FEATURES

- Up to 123,725 SF Available
- Office SF To Be Determined
- Total Building SF 375,812
- 23' Clear Ceiling Height
- 13 Exterior Truckwells
- One Grade Level Door



FOR DETAILS CONTACT

Jon Savoy, CCIM, SIOR
jon.savoy@lee-associates.com
(248) 567-8000

Randall Allman, SIOR
randall.allman@lee-associates.com
(248) 224-9771

Mohammed "Moe" Al-Thihabawy
moe.al@lee-associates.com
(248) 567-8021

All information furnished regarding property for sale, rental or financing is from sources deemed reliable, but no warranty or representation is made to the accuracy thereof and some is submitted to errors, omissions, change of price, rental or other conditions prior to sale, lease or financing or withdrawal without notice. No liability of any kind is to be imposed on the broker herein.

FOR LEASE

2401 S. GULLEY RD.
DEARBORN, MICHIGAN



PROPERTY TYPE:	Industrial Distribution
BUILDING SF:	±375,812 SF
AVAILABLE SF:	Up to 123,725 SF TBD
LAND (AC):	± 12.95 Acres
ZONING:	IA - Light Industrial IB - Medium Industrial
PARCEL ID:	82-09-291-76-001 81-09-291-76-002
YEAR BUILT:	1968
INTERIOR TRUCK DOCKS:	13
GRADE LEVEL DOORS:	1
CLEAR HEIGHT:	23'

PROPERTY PRICING

TRANSACTION TYPE:	Lease
ASKING LEASE RATE:	\$5.95 NNN PSF

FOR DETAILS CONTACT

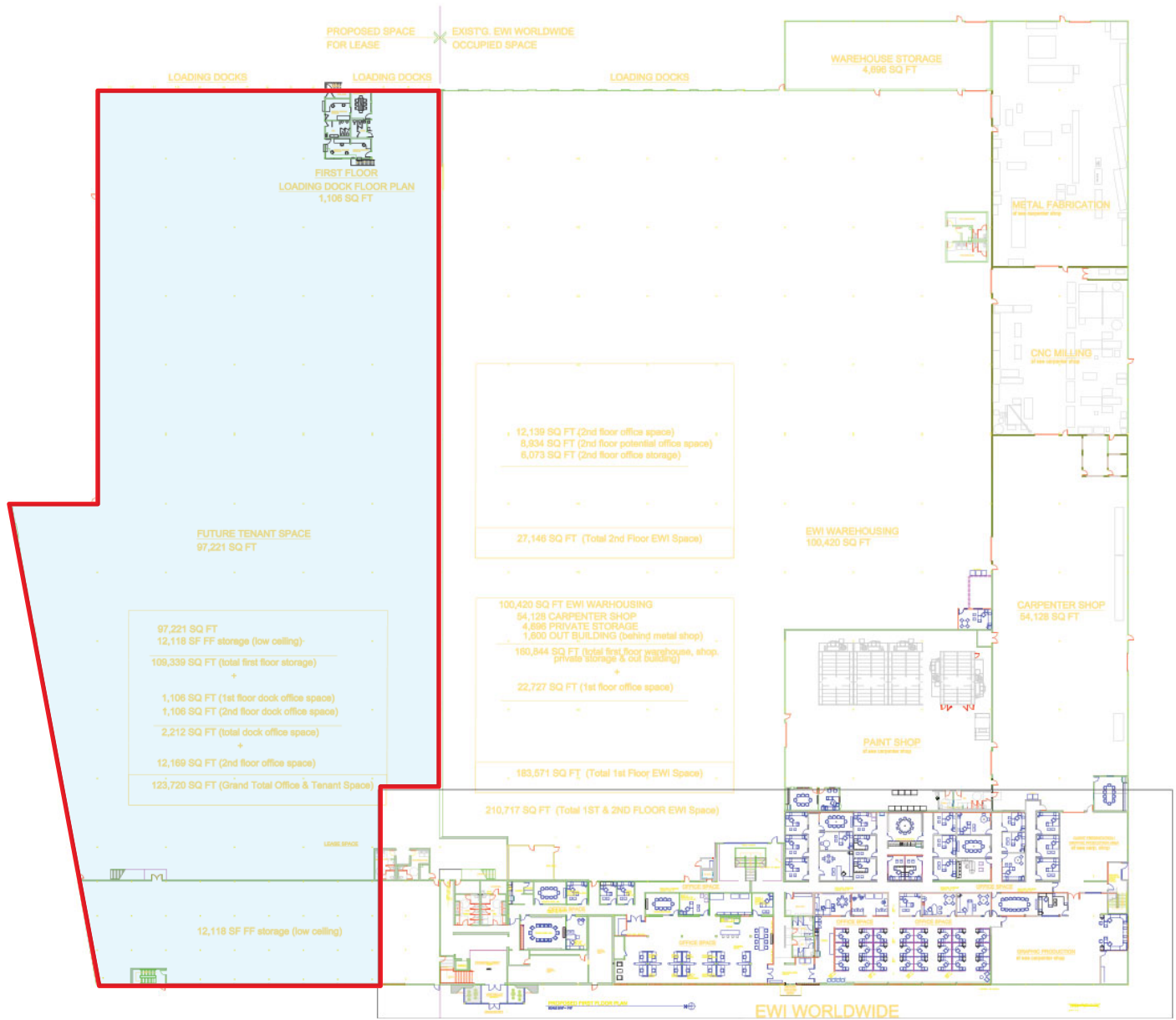
Jon Savoy, CCIM, SIOR
jon.savoy@lee-associates.com
(248) 567-8000

Randall Allman, SIOR
randall.allman@lee-associates.com
(248) 224-9771

Mohammed "Moe" Al-Thihibawwy
moe.al@lee-associates.com
(248) 567-8021

All information furnished regarding property for sale, rental or financing is from sources deemed reliable, but no warranty or representation is made to the accuracy thereof and some is submitted to errors, omissions, change of price, rental or other conditions prior to sale, lease or financing or withdrawal without notice. No liability of any kind is to be imposed on the broker herein.

2401 S. GULLEY RD.
DEARBORN, MICHIGAN



FOR DETAILS CONTACT

Jon Savoy, CCIM, SIOR
jon.savoy@lee-associates.com
(248) 567-8000

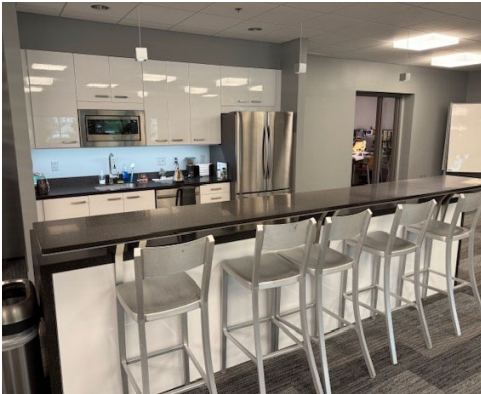
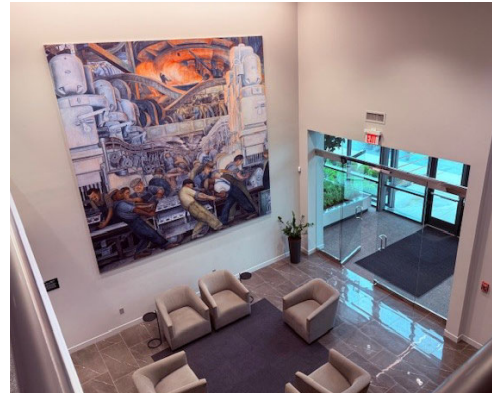
Randall Allman, SIOR
randall.allman@lee-associates.com
(248) 224-9771

Mohammed "Moe" Al-Thihibawy
moe.al@lee-associates.com
(248) 567-8021

All information furnished regarding property for sale, rental or financing is from sources deemed reliable, but no warranty or representation is made to the accuracy thereof and some is submitted to errors, omissions, change of price, rental or other conditions prior to sale, lease or financing or withdrawal without notice. No liability of any kind is to be imposed on the broker herein.

FOR LEASE

2401 S. GULLEY RD.
DEARBORN, MICHIGAN



FOR DETAILS CONTACT

Jon Savoy, CCIM, SIOR
jon.savoy@lee-associates.com
(248) 567-8000

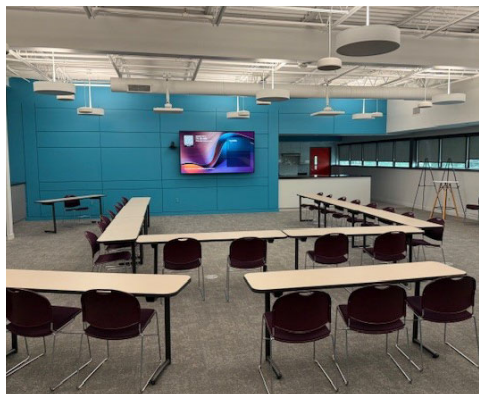
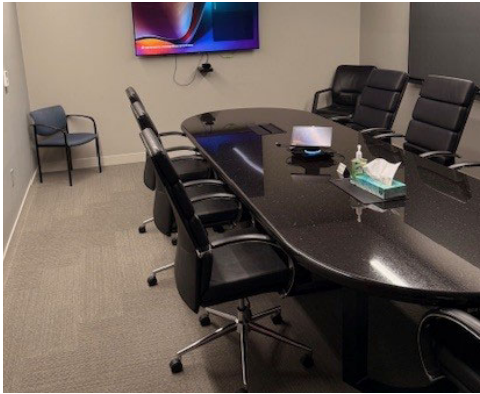
Randall Allman, SIOR
randall.allman@lee-associates.com
(248) 224-9771

Mohammed "Moe" Al-Thihibawwy
moe.al@lee-associates.com
(248) 567-8021

All information furnished regarding property for sale, rental or financing is from sources deemed reliable, but no warranty or representation is made to the accuracy thereof and some is submitted to errors, omissions, change of price, rental or other conditions prior to sale, lease or financing or withdrawal without notice. No liability of any kind is to be imposed on the broker herein.

FOR LEASE

2401 S. GULLEY RD.
DEARBORN, MICHIGAN



FOR DETAILS CONTACT

Jon Savoy, CCIM, SIOR
jon.savoy@lee-associates.com
(248) 567-8000

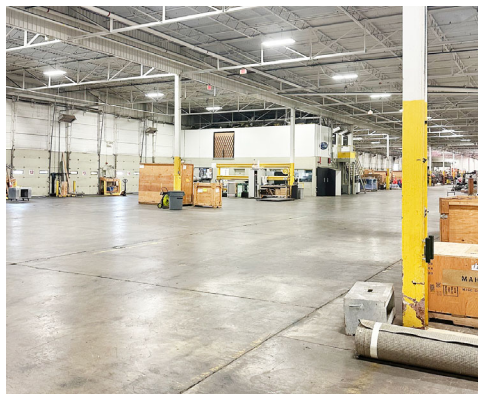
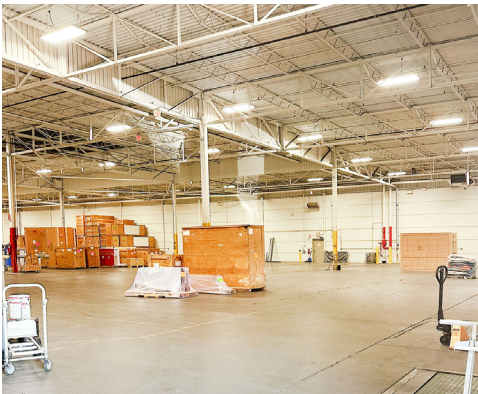
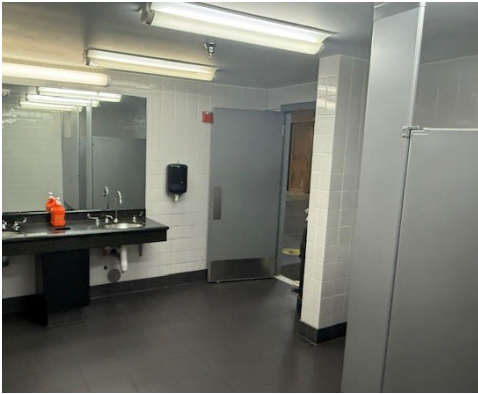
Randall Allman, SIOR
randall.allman@lee-associates.com
(248) 224-9771

Mohammed "Moe" Al-Thihibawwy
moe.al@lee-associates.com
(248) 567-8021

All information furnished regarding property for sale, rental or financing is from sources deemed reliable, but no warranty or representation is made to the accuracy thereof and some is submitted to errors, omissions, change of price, rental or other conditions prior to sale, lease or financing or withdrawal without notice. No liability of any kind is to be imposed on the broker herein.

FOR LEASE

2401 S. GULLEY RD.
DEARBORN, MICHIGAN



FOR DETAILS CONTACT

Jon Savoy, CCIM, SIOR
jon.savoy@lee-associates.com
(248) 567-8000

Randall Allman, SIOR
randall.allman@lee-associates.com
(248) 224-9771

Mohammed "Moe" Al-Thihibawwy
moe.al@lee-associates.com
(248) 567-8021

All information furnished regarding property for sale, rental or financing is from sources deemed reliable, but no warranty or representation is made to the accuracy thereof and some is submitted to errors, omissions, change of price, rental or other conditions prior to sale, lease or financing or withdrawal without notice. No liability of any kind is to be imposed on the broker herein.