

CBRE

1005
16TH S AVE
PRINCETON, MN

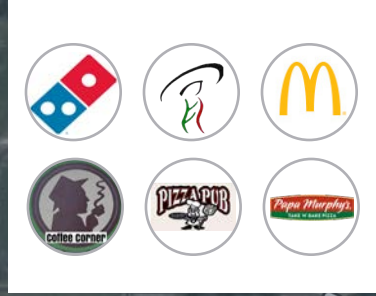
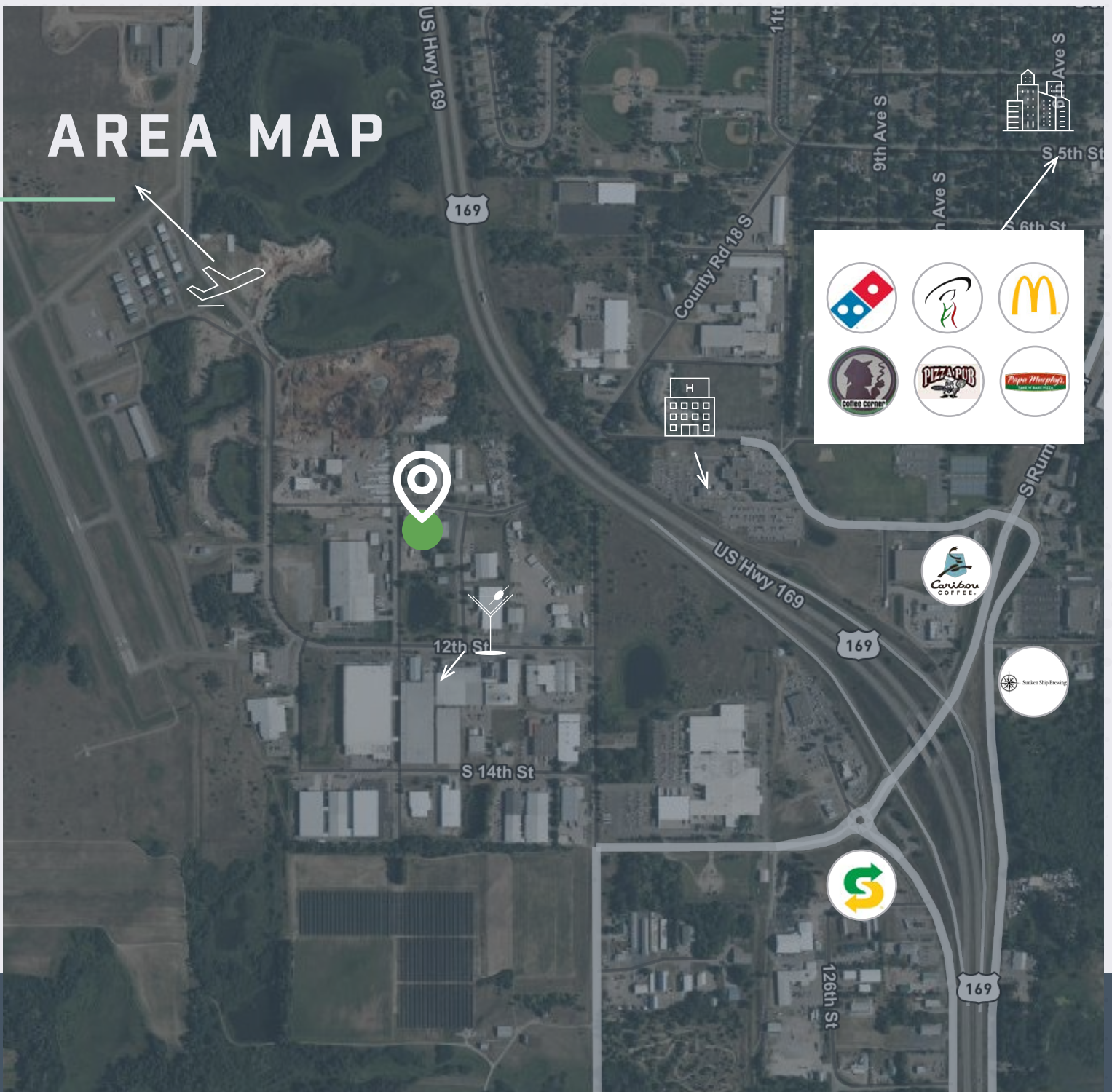
**1005 16TH
S AVE**



\$3,075,500

**32,500 SF
SPACE FOR SALE**

AREA MAP



H I G H L I G H T S



City of Princeton



**Princeton Municipal
Airport**



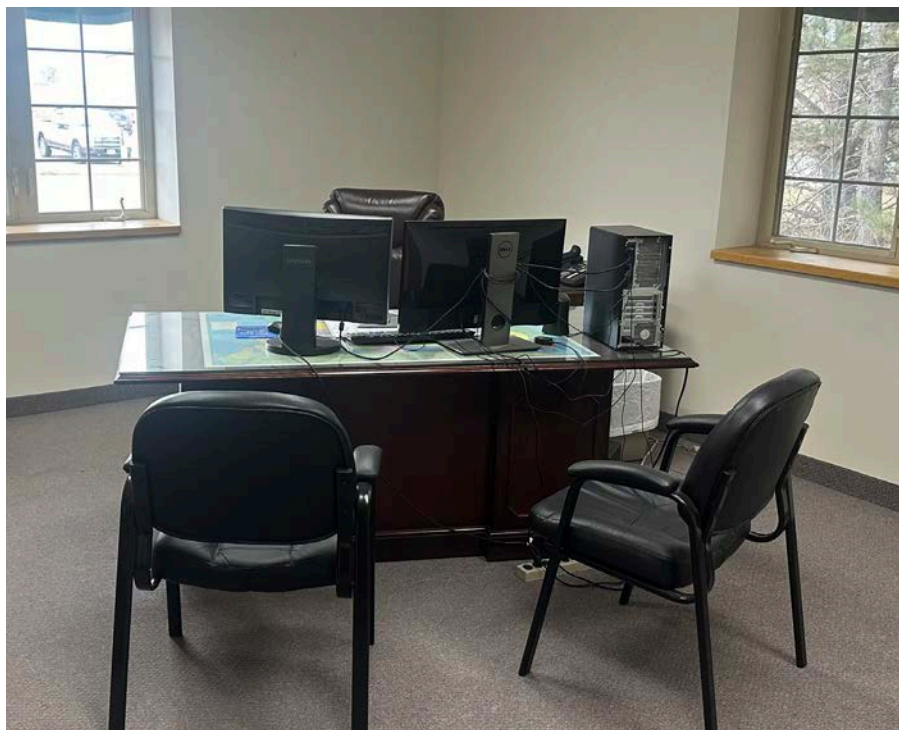
**M Health Fairview
Medical Center**



Phillips Distilling

PROPERTY SPECS

Spec	Spec Details
Total SF	32,500 SF
Office SF	2,000 SF <i>5 offices and 1 conference room</i>
Mezzanine SF	2,000 SF
Built	1998
Clear Height	20'
Drive-Ins	3
Docks	5
Surface Parking	30 Spots
2023 Taxes	\$34,448



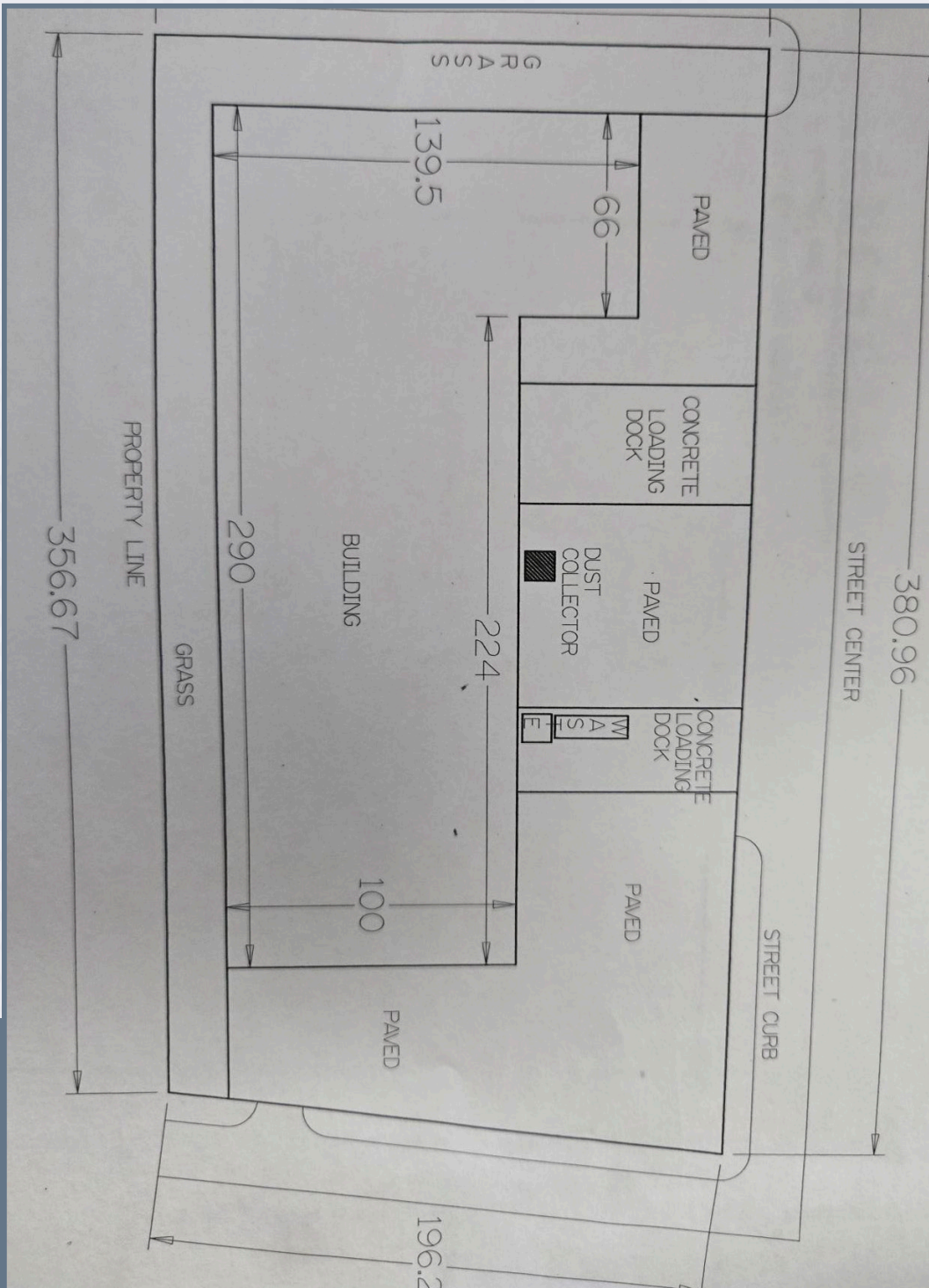


MANUFACTURING SPACE



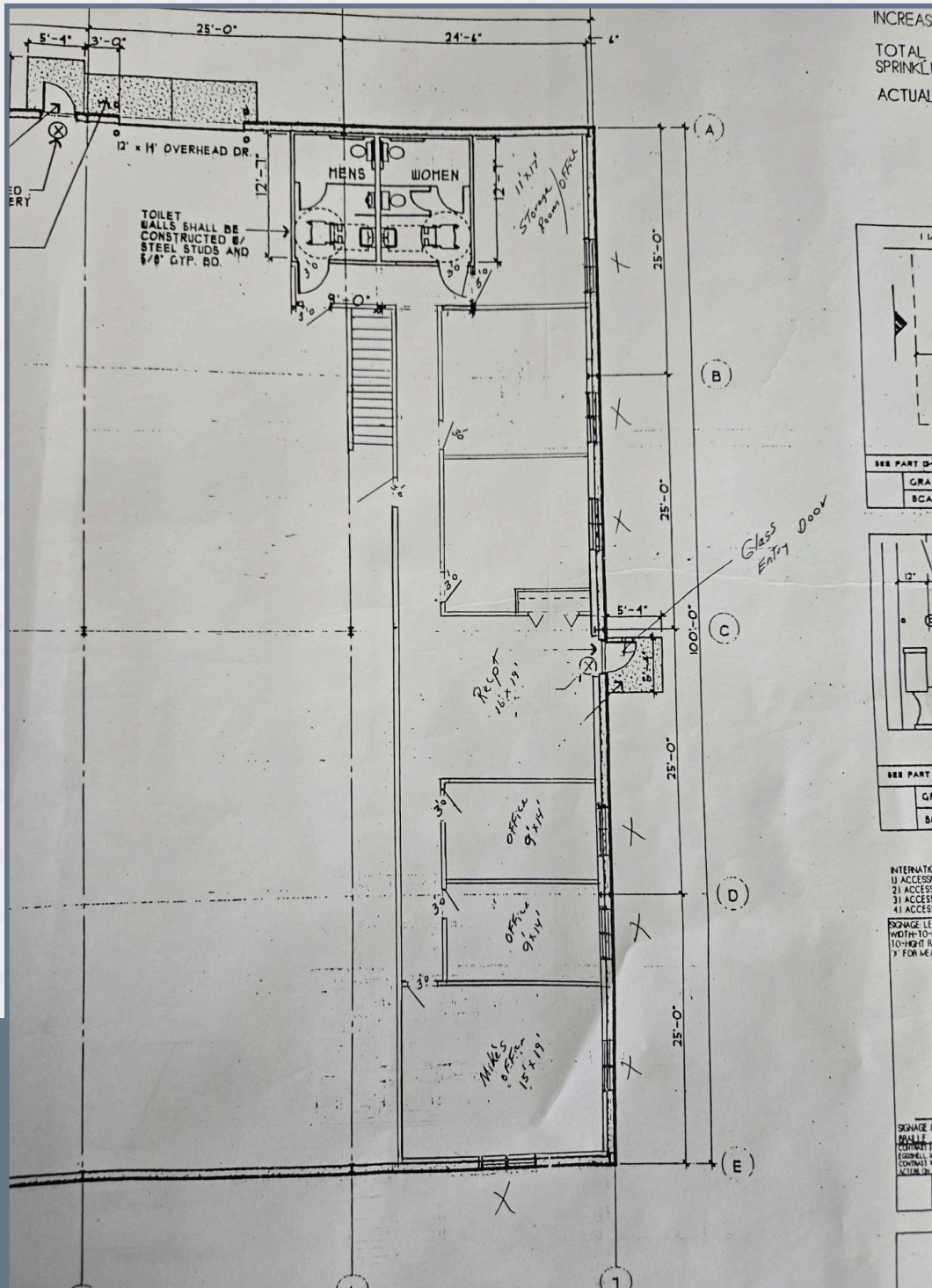
FLOOR PLAN

32,500 SF



FLOOR PLAN - OFFICE

2,000 SF



DEMOGRAPHIC REPORT



POPULATION

	1 MILE	3 MILES	5 MILES
2023 Population - Current Year Estimate	1,544	8,526	14,384
2028 Population - Five Year Projection	1,570	8,558	14,445
2020 Population - Census	1,565	8,516	14,210
2010 Population - Census	1,528	8,250	13,656
2020-2023 Annual Population Growth Rate	-0.41%	0.04%	0.38%
2023-2028 Annual Population Growth Rate	0.33%	0.07%	0.08%



HOUSEHOLDS

	1 MILE	3 MILES	5 MILES
2023 Households - Current Year Estimate	674	3,418	5,545
2028 Households - Five Year Projection	697	3,473	5,634
2010 Households - Census	615	3,130	5,025
2020 Households - Census	669	3,371	5,424
	97.7%	96.2%	96.2%
2020-2023 Compound Annual Household Growth Rate	0.23%	0.43%	0.68%
2023-2028 Annual Household Growth Rate	0.67%	0.32%	0.32%
2023 Average Household Size	2.26	2.46	2.57



HOUSEHOLD INCOME

	1 MILE	3 MILES	5 MILES
2023 Average Household Income	\$67,522	\$81,312	\$95,192
2028 Average Household Income	\$76,021	\$92,264	\$107,771
2023 Median Household Income	\$54,824	\$65,006	\$78,448
2028 Median Household Income	\$59,128	\$74,327	\$85,168
2023 Per Capita Income	\$28,760	\$33,195	\$36,880
2028 Per Capita Income	\$32,911	\$38,100	\$42,227



HOUSING UNITS

	1 MILE	3 MILES	5 MILES
2023 Housing Units	693	3,558	5,778
2023 Vacant Housing Units	19 2.7%	140 3.9%	233 4.0%
2023 Occupied Housing Units	674 97.3%	3,418 96.1%	5,545 96.0%
2023 Owner Occupied Housing Units	369 53.2%	2,497 70.2%	4,531 78.4%
2023 Renter Occupied Housing Units	305 44.0%	921 25.9%	1,014 17.5%



EDUCATION

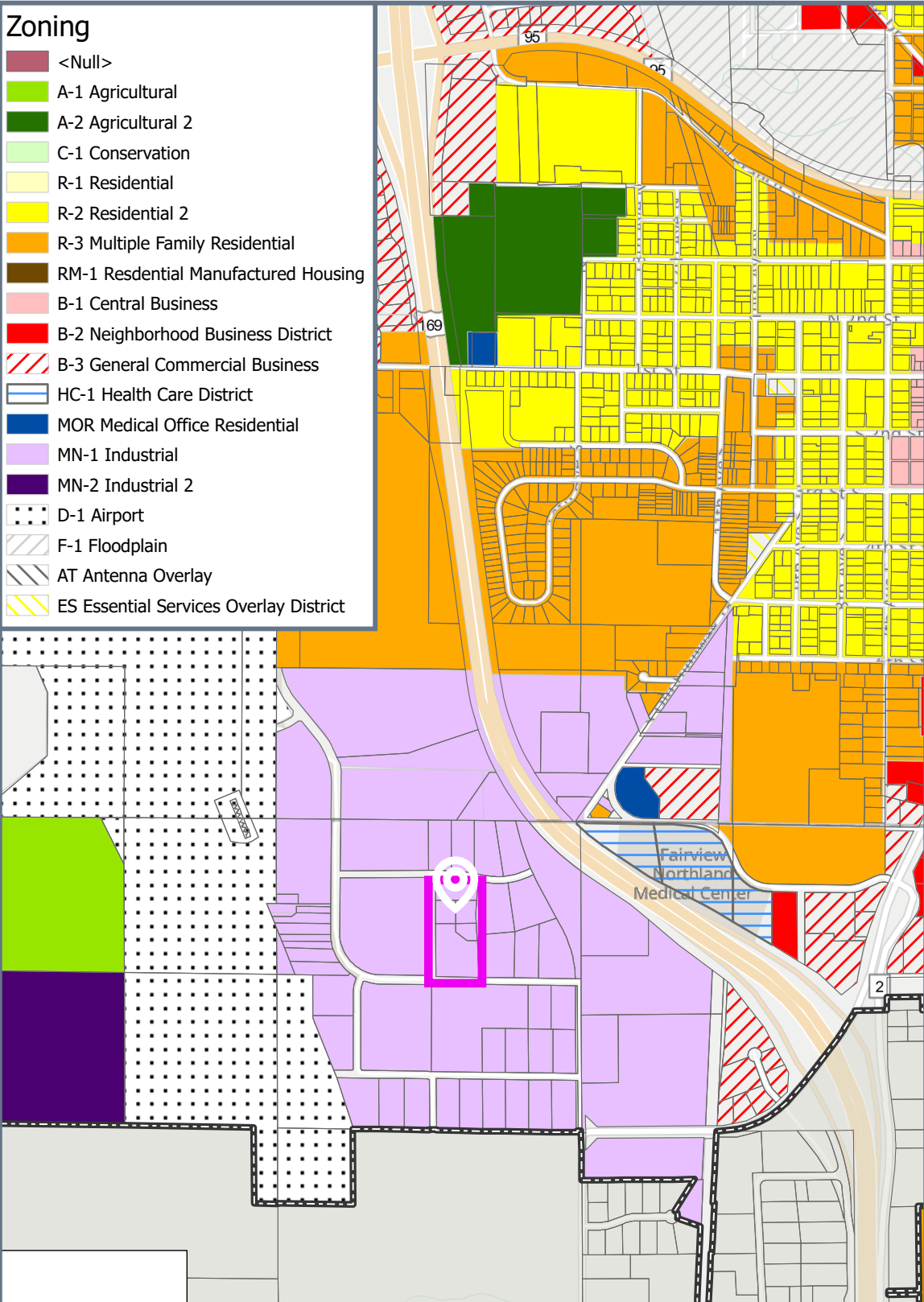
	1 MILE	3 MILES	5 MILES
2023 Population 25 and Over	972	5,850	9,855
HS and Associates Degrees	783 80.6%	4,516 77.2%	7,463 75.7%
Bachelor's Degree or Higher	112 11.5%	912 15.6%	1,766 17.9%



PLACE OF WORK

	1 MILE	3 MILES	5 MILES
2023 Businesses	169	434	500
2023 Employees	3,081	6,145	6,456

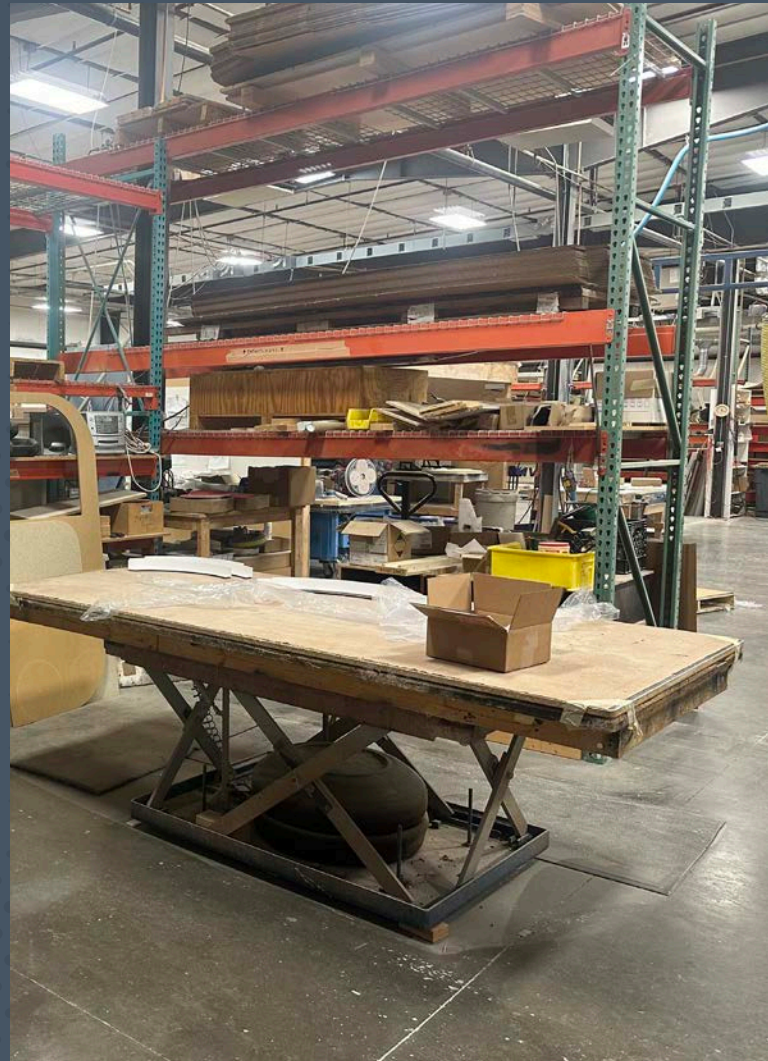
ZONING MAP



CONTACT

FRANK SHERWOOD
Vice President

+1 952 924 4823
frank.sherwood@cbre.com



CBRE

© 2024 CBRE, Inc. All rights reserved. This information has been obtained from sources believed reliable but has not been verified for accuracy or completeness. CBRE, Inc. makes no guarantee, representation or warranty and accepts no responsibility or liability as to the accuracy, completeness, or reliability of the information contained herein. You should conduct a careful, independent investigation of the property and verify all information. Any reliance on this information is solely at your own risk. CBRE and the CBRE logo are service marks of CBRE, Inc. All other marks displayed on this document are the property of their respective owners, and the use of such marks does not imply any affiliation with or endorsement of CBRE. Photos herein are the property of their respective owners. Use of these images without the express written consent of the owner is prohibited.