



75 ROBIN HILL ROAD

GOLETA CA 93117

FOR SUBLEASE

**±8,940 SF INDUSTRIAL/OFFICE
WITH MULTIPLE CLEAN ROOMS**

**SUBLEASE RATE:
\$1.65/SF MODIFIED GROSS**

**Strategically located in Goleta's dynamic
high-tech corridor with easy access to
US 101 Fwy, Santa Barbara Airport,
abundant new housing & core amenities**



ROB HAMBLETON

805.879.9611

rhambleton@radiusgroup.com

CA LIC. 01858350

© 12/11/25 Radius Group Commercial Real Estate, Inc. DRE lic. 01334755. All rights reserved. Content and/or images may not be used without permission. The information provided here has been obtained from the owner of the property or from other sources deemed reliable. We have no reason to doubt its accuracy, but we do not guarantee it.



RADIUSGROUP.COM



75 ROBIN HILL ROAD

GOLETA CA 93117

Complete with multiple clean rooms, office space, and a fantastic break room, this space is offered at a very affordable rate considering the excellent options that it has. If you are looking for efficient space with all the bells and whistles (clean room, ventilation, conference room, etc.) at a great price with ample parking, this is your space.



ROB HAMBLETON

805.879.9611

rhambleton@radiusgroup.com

CA LIC. 01858350

© 12/11/25 Radius Group Commercial Real Estate, Inc. DRE lic. 01334755. All rights reserved. Content and/or images may not be used without permission. The information provided here has been obtained from the owner of the property or from other sources deemed reliable. We have no reason to doubt its accuracy, but we do not guarantee it.

Space Size

±8,940 SF

Sublease Rate

\$1.65/SF Modified Gross

Available

Immediately

Parking

3/1,000

Floors

Single

Sprinklers

Yes

Restrooms

Common

HVAC

Yes

Zoning

Light Manufacturing

CSO

2.5%

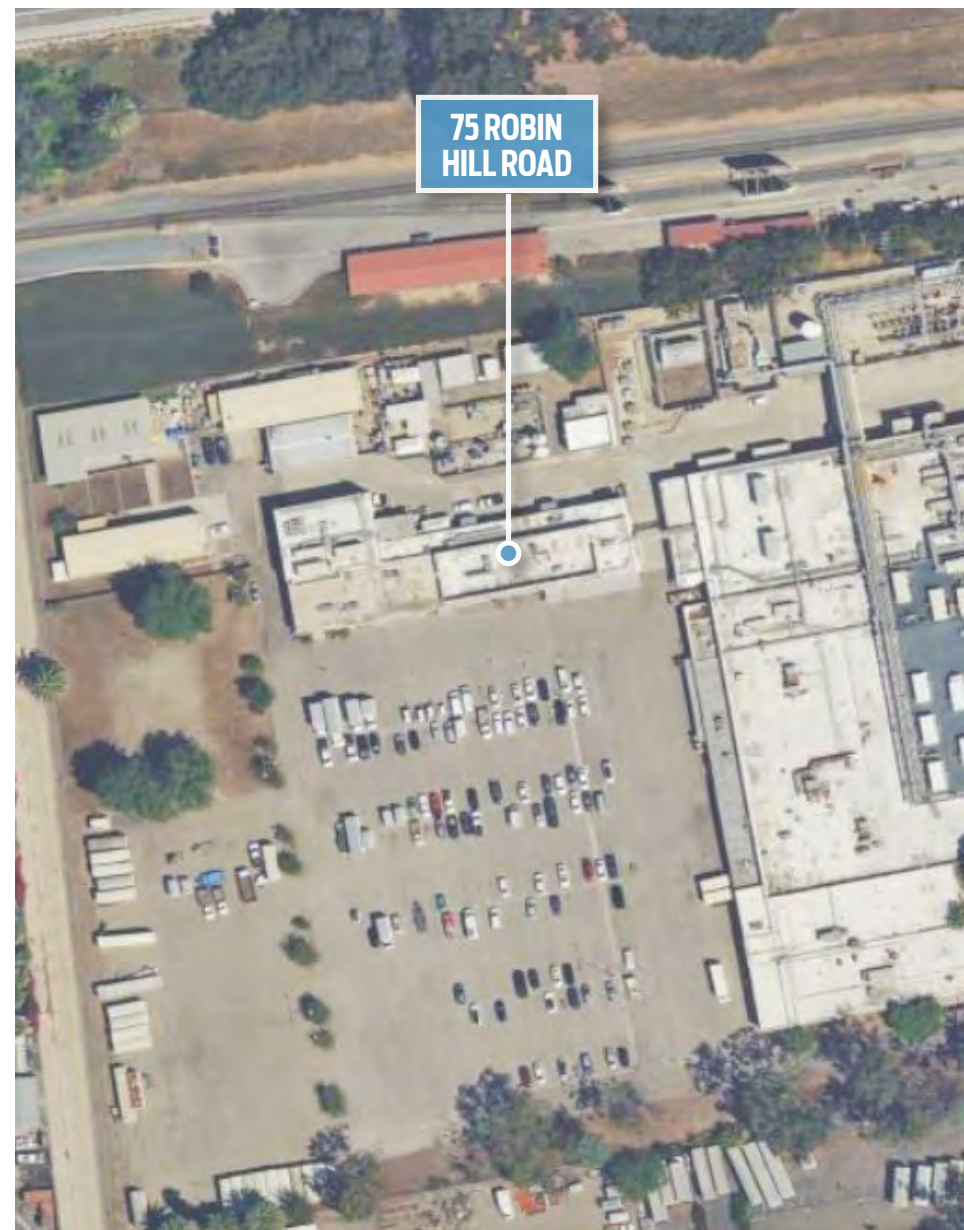


RADIUSGROUP.COM

75 ROBIN HIL RD GOLETA CALIFORNIA 93117

FOR SUBLEASE

±8,940 SF Industrial/Office space with multiple clean rooms in Goleta's booming tech corridor



ROB HAMBLETON

805.879.9611

rhambleton@radiusgroup.com

CA LIC. 01858350



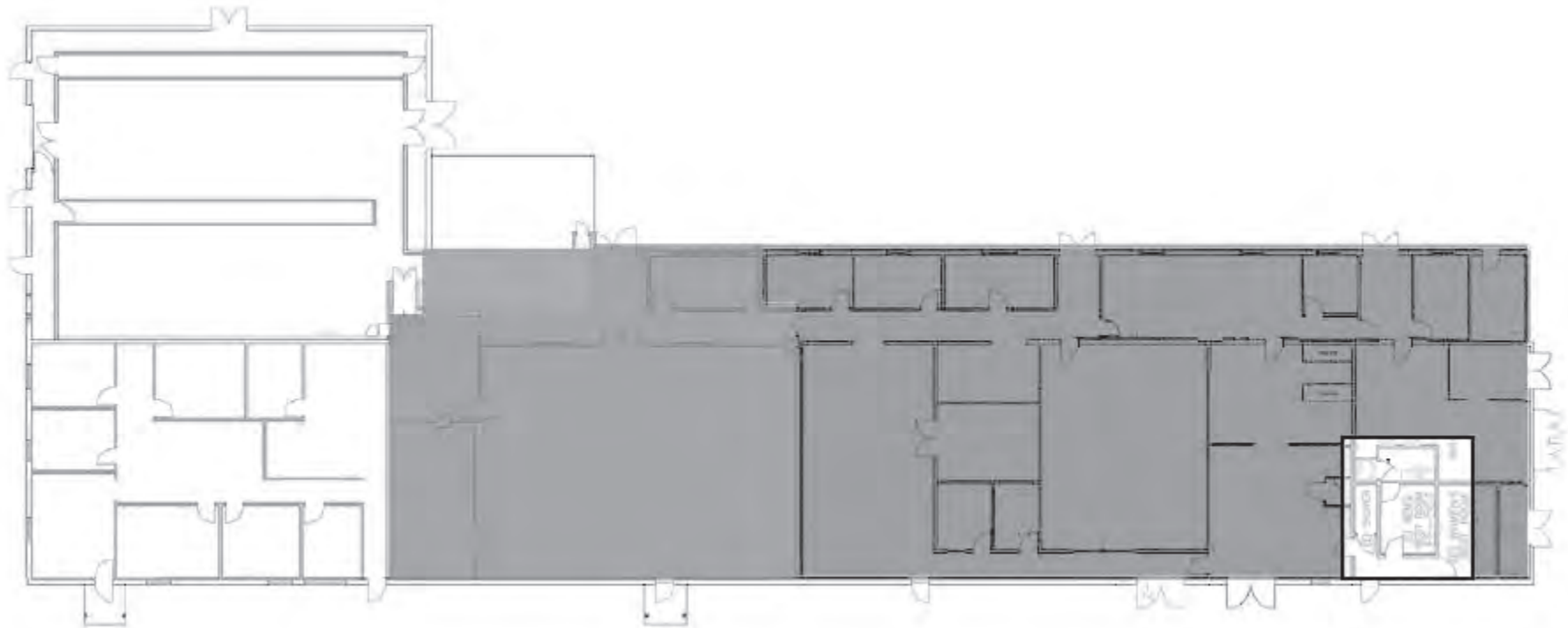
© 12/11/25 Radius Group Commercial Real Estate, Inc. DRE lic. 01334755. All rights reserved. Content and/or images may not be used without permission. The information provided here has been obtained from the owner of the property or from other sources deemed reliable. We have no reason to doubt its accuracy, but we do not guarantee it.

RADIUSGROUP.COM

75 ROBIN HIL RD
GOLETA CALIFORNIA 93117

FOR SUBLEASE
±8,940 SF Industrial/Office space with multiple
clean rooms in Goleta's booming tech corridor

FLOOR PLAN



ROB HAMBLETON
805.879.9611
rhambleton@radiusgroup.com
CA LIC. 01858350



© 12/11/25 Radius Group Commercial Real Estate, Inc. DRE lic. 01334755. All rights reserved. Content and/or images may not be used without permission. The information provided here has been obtained from the owner of the property or from other sources deemed reliable. We have no reason to doubt its accuracy, but we do not guarantee it.

RADIUSGROUP.COM



ROB HAMBLETON
805.879.9611
rhambleton@radiusgroup.com
 CA LIC. 01858350



© 12/11/25 Radius Group Commercial Real Estate, Inc. DRE lic. 01334755. All rights reserved. Content and/or images may not be used without permission. The information provided here has been obtained from the owner of the property or from other sources deemed reliable. We have no reason to doubt its accuracy, but we do not guarantee it.

RADIUSGROUP.COM



ROB HAMBLETON
805.879.9611
rhambleton@radiusgroup.com
 CA LIC. 01858350



© 12/11/25 Radius Group Commercial Real Estate, Inc. DRE lic. 01334755. All rights reserved. Content and/or Images may not be used without permission. The information provided here has been obtained from the owner of the property or from other sources deemed reliable. We have no reason to doubt its accuracy, but we do not guarantee it.

RADIUSGROUP.COM

75 ROBIN HIL RD
GOLETA CALIFORNIA 93117

FOR SUBLEASE

±8,940 SF Industrial/Office space with multiple
clean rooms in Goleta's booming tech corridor

Select Nearby Amenities & Businesses

CAMINO REAL MARKETPLACE



CABRILLO BUSINESS PARK



HOLLISTER VILLAGE PLAZA



GLEN ANNIE GOLF CLUB

HOLLISTER VILLAGE RESIDENTIAL DEV.

SUBJECT PROPERTY

GOLETA HI-TECH CORRIDOR



UCSB CAMPUS

GOLETA BEACH PARK



STORKE ROAD

LOS CARNEROS
ROAD

FAIRVIEW AVE

HOLLISTER AVE

HOLLISTER AVE



ROB HAMBLETON

805.879.9611

rhambleton@radiusgroup.com

CA LIC. 01858350



“THE GOOD LAND”

The city of Goleta rests a few minutes north of Santa Barbara in the South Coast region of Santa Barbara County, roughly 330 miles south of San Francisco and 90 miles north of Los Angeles. Goleta and the Gaviota Coast to the north make up 12 picturesque miles of the Santa Barbara coastline. In fact the area is known as The Good Land for its sprawling ranches, fertile farms, lemon orchards and sustainable gardens that supply local restaurants and farmers markets year round. From the Goleta pier to Point Arguello, the area is a recreational paradise. Whether fishing off the pier, hiking the bluffs, surfing Campus Point or getting up close and personal with wildlife while kayaking in the Goleta Slough, there is something for everyone.

The South Coast region's central location, year-round mild climate, proximity to the University of California, Santa Barbara (UCSB), high quality of living, bustling technology industry and wealth of outdoor amenities are but a few of the reasons Goleta and Santa Barbara are regularly selected among the best places to live and work by numerous sources including [livability.com](#), [Money Magazine](#) and [Sunset Magazine](#).

THE MARKET



Ellwood Mesa Sperling Preserve & Santa Barbara Shores Park

This 230-acre preserve is the largest publicly-owned coastal open space on Santa Barbara County's South Coast. Popular with runners, surfers, bikers and equestrians, the Ellwood Mesa Coastal Trail meanders through natural habitats and provides beach access via the Ellwood Mesa bluffs. The Monarch Butterfly Grove lies just north and spans 78 acres of eucalyptus groves giving safe shelter to the butterflies who bear its name from late autumn through winter.

