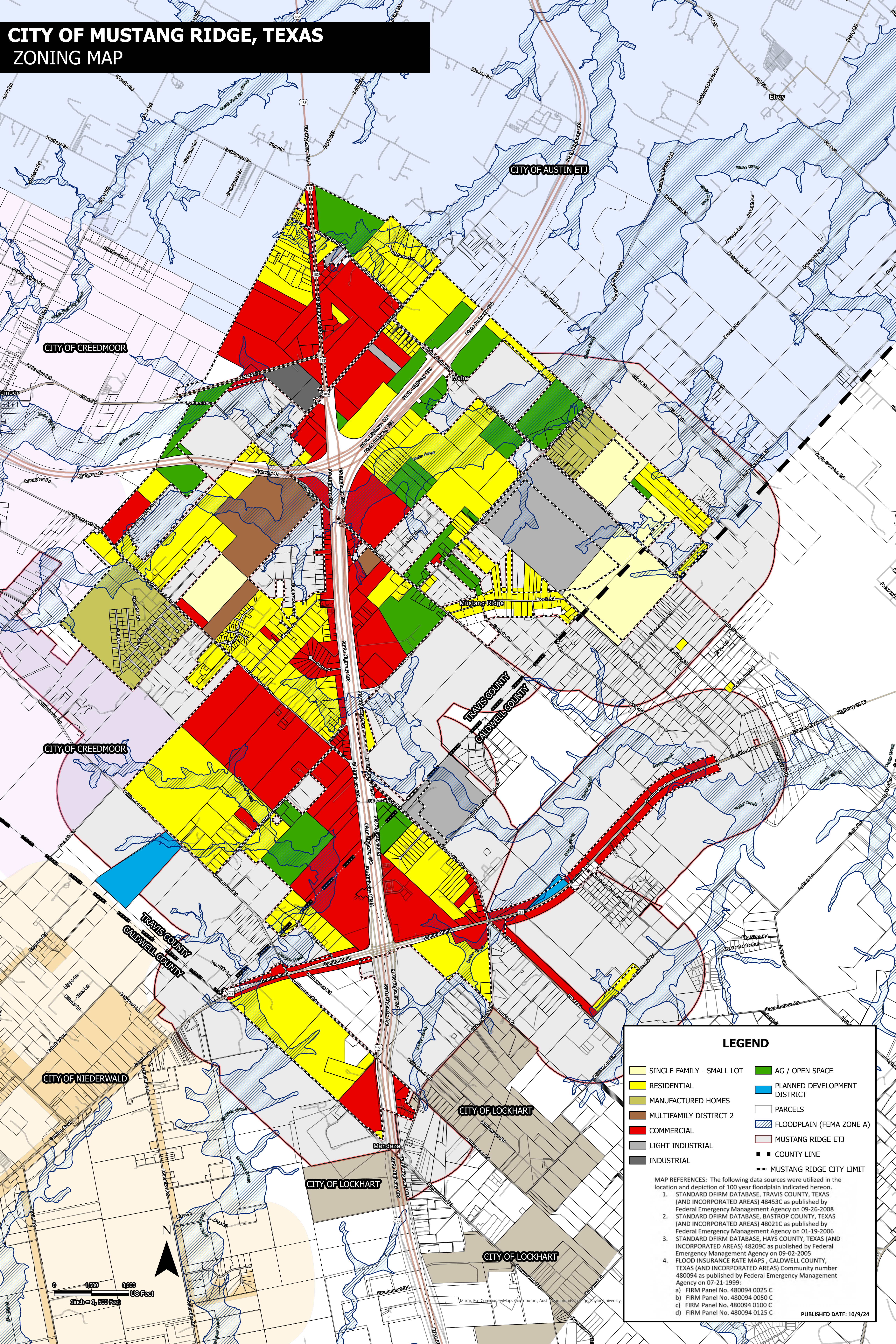


CITY OF MUSTANG RIDGE, TEXAS

ZONING MAP



LEGEND

- | | |
|---------------------------|------------------------------|
| SINGLE FAMILY - SMALL LOT | AG / OPEN SPACE |
| RESIDENTIAL | PLANNED DEVELOPMENT DISTRICT |
| MANUFACTURED HOMES | PARCELS |
| MULTIFAMILY DISTRICT 2 | FLOODPLAIN (FEMA ZONE A) |
| COMMERCIAL | MUSTANG RIDGE ETJ |
| LIGHT INDUSTRIAL | COUNTY LINE |
| INDUSTRIAL | MUSTANG RIDGE CITY LIMIT |

MAP REFERENCES: The following data sources were utilized in the location and depiction of 100 year floodplain indicated hereon.

1. STANDARD DFIRM DATABASE, TRAVIS COUNTY, TEXAS (AND INCORPORATED AREAS) 48453C as published by Federal Emergency Management Agency on 09-26-2008
2. STANDARD DFIRM DATABASE, BASTROP COUNTY, TEXAS (AND INCORPORATED AREAS) 48021C as published by Federal Emergency Management Agency on 01-19-2006
3. STANDARD DFIRM DATABASE, HAYS COUNTY, TEXAS (AND INCORPORATED AREAS) 48209C as published by Federal Emergency Management Agency on 09-02-2005
4. FLOOD INSURANCE RATE MAPS, CALDWELL COUNTY, TEXAS (AND INCORPORATED AREAS) Community number 480094 as published by Federal Emergency Management Agency on 07-21-1999:
 - a) FIRM Panel No. 480094 0025 C
 - b) FIRM Panel No. 480094 0050 C
 - c) FIRM Panel No. 480094 0100 C
 - d) FIRM Panel No. 480094 0125 C

PUBLISHED DATE: 10/9/24