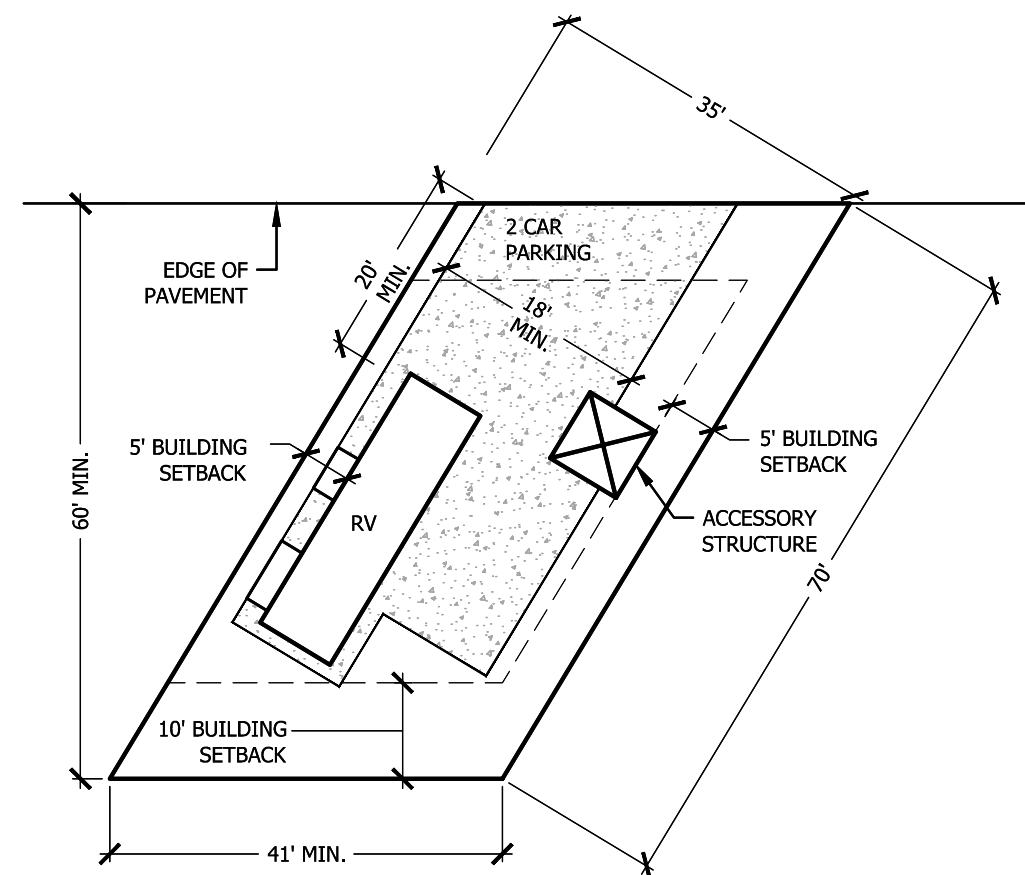
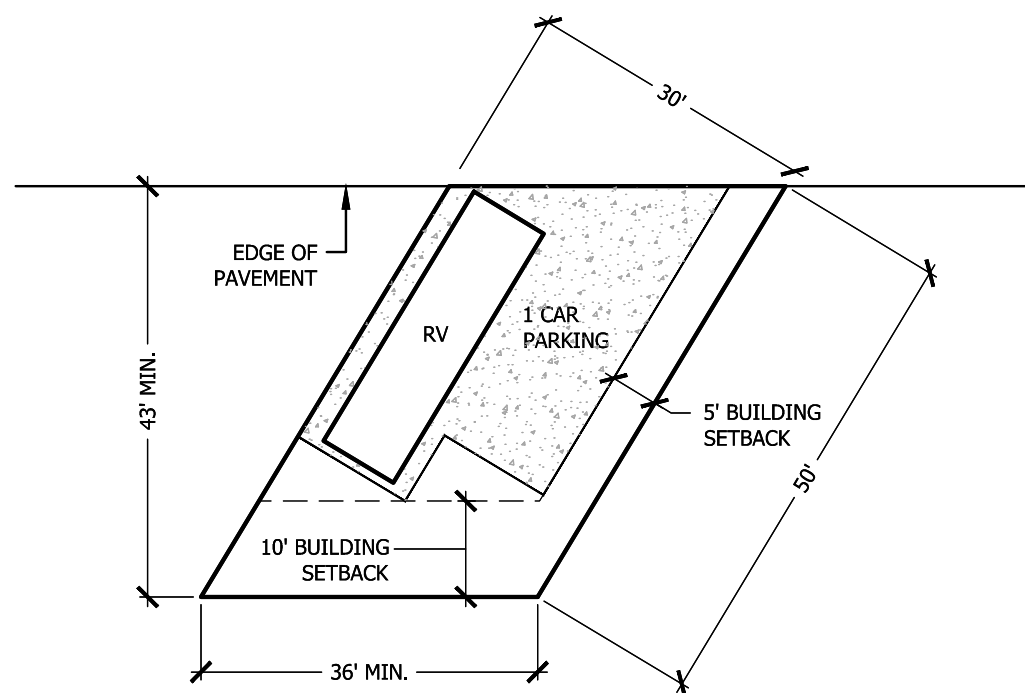


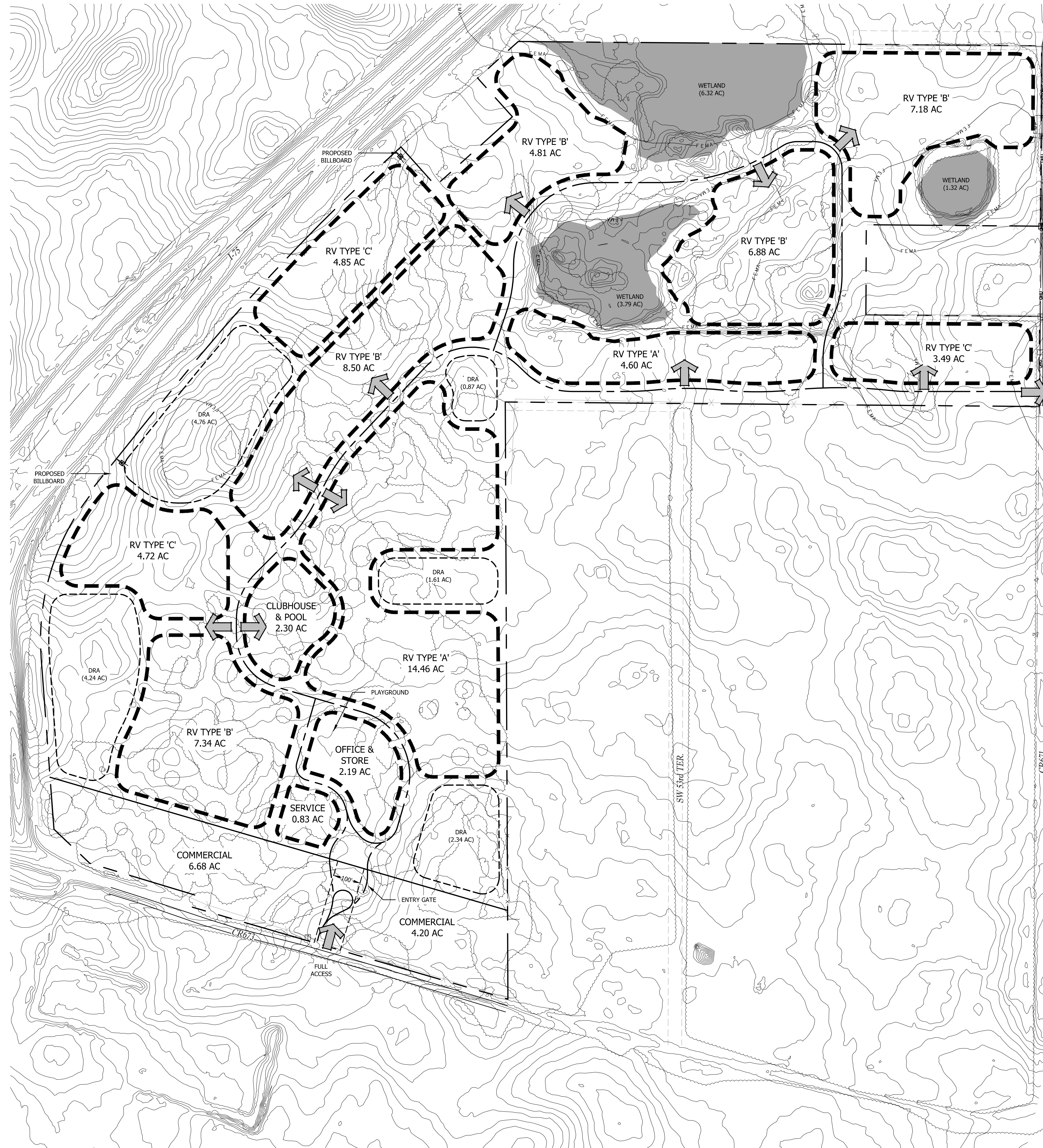
**A** TYPICAL RV LOT LAYOUT 'A' - 40' X 80'  
NOT TO SCALE



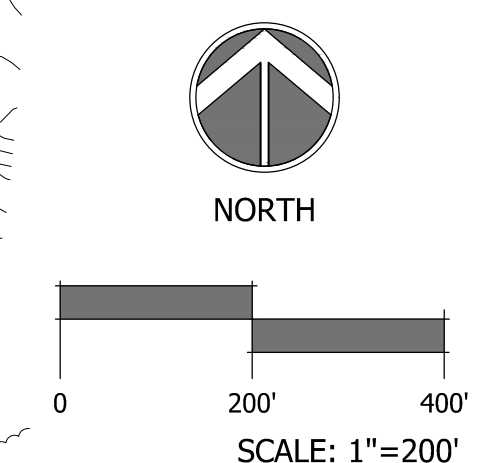
**B** TYPICAL RV LOT LAYOUT 'B' - 35' X 70'  
NOT TO SCALE



**C** TYPICAL RV LOT LAYOUT 'C' - 30' X 50'  
NOT TO SCALE



| SITE DATA                                     |                          |
|---|--------------------------|
| COMMERCIAL                                    | 10.88 AC                 |
| 100' R.O.W. ENTRY                             | 0.71 AC                  |
|   | <b>SUBTOTAL 11.59 AC</b> |
| RV TYPE 'A' (169, 22%)                        | 19.06 AC                 |
| RV TYPE 'B' (388, 50%)                        | 34.71 AC                 |
| RV TYPE 'C' (219, 28%)                        | 13.06 AC                 |
|   | <b>SUBTOTAL 66.83 AC</b> |
| OFFICE & STORE                                | 2.19 AC                  |
| CLUBHOUSE & POOL                              | 2.30 AC                  |
| SERVICE / MAINT.                              | 0.83 AC                  |
|   | <b>SUBTOTAL 5.32 AC</b>  |
| DRA   | 13.82 AC                 |
| WETLAND                                       | 11.43 AC                 |
| OTHER (ROADS, BUFFER, WETLAND SETBACKS, ETC.) | 34.01 AC                 |
|   | <b>SUBTOTAL 59.26 AC</b> |
| <b>SITE TOTAL</b>                             | <b>± 143 AC</b>          |
| <b>TOTAL LOTS</b>                             | <b>± 776</b>             |



**Tillman & Associates**  
ENGINEERING, LLC.  
CIVIL ENGINEERING - PLANNING - LANDSCAPE ARCHITECTURE - ENVIRONMENTAL  
1720 SE 16th Ave. Bldg. 100, Ocala, FL 34471  
Office: (352) 387-4540 Fax: (352) 387-4545  
CERTIFICATE OF AUTHORIZATION #26256

| DATE | REVISIONS |
|------|-----------|
|      |           |
|      |           |
|      |           |
|      |           |
|      |           |
|      |           |
|      |           |
|      |           |
|      |           |
|      |           |

SUMTER COUNTY RV  
VCARE CONSULTANTS, LLC.  
SUMTER COUNTY, FLORIDA

**CONCEPT PLAN**

DATE 5/28/2019  
DRAWN BY JBA  
CHKD. BY JRP  
JOB NO. 19-5032

**SHEET 1**