

GE PROPERTY

佳富地產

FOR SALE

1101 W Valley Blvd Unit #105-106

Alhambra, CA 91801



Raymond Ho

Vice President
DRE# 01868322

Office (626) 458-9000
Cell (626) 297-1228

407 W. VALLEY BLVD, SUITE 4, ALHAMBRA, CA 91803
WWW.GEPROPERTY.COM
DRE# 01841262

1101 W Valley Blvd, Alhambra

| | |
|-----------------|-----------------------|
| OFFERED AT: | \$1,495,000.00 |
| Units: | #105 & #106 |
| SIZE: | ~2,022 SQFT |
| LOT SIZE: | 14,995 SQFT |
| Current Tenant: | T-Mobile |
| CAP rate: | 6% |
| NOI: | \$90,116 |
| HOA: | ~\$500/month/unit |
| Parking: | Shared |

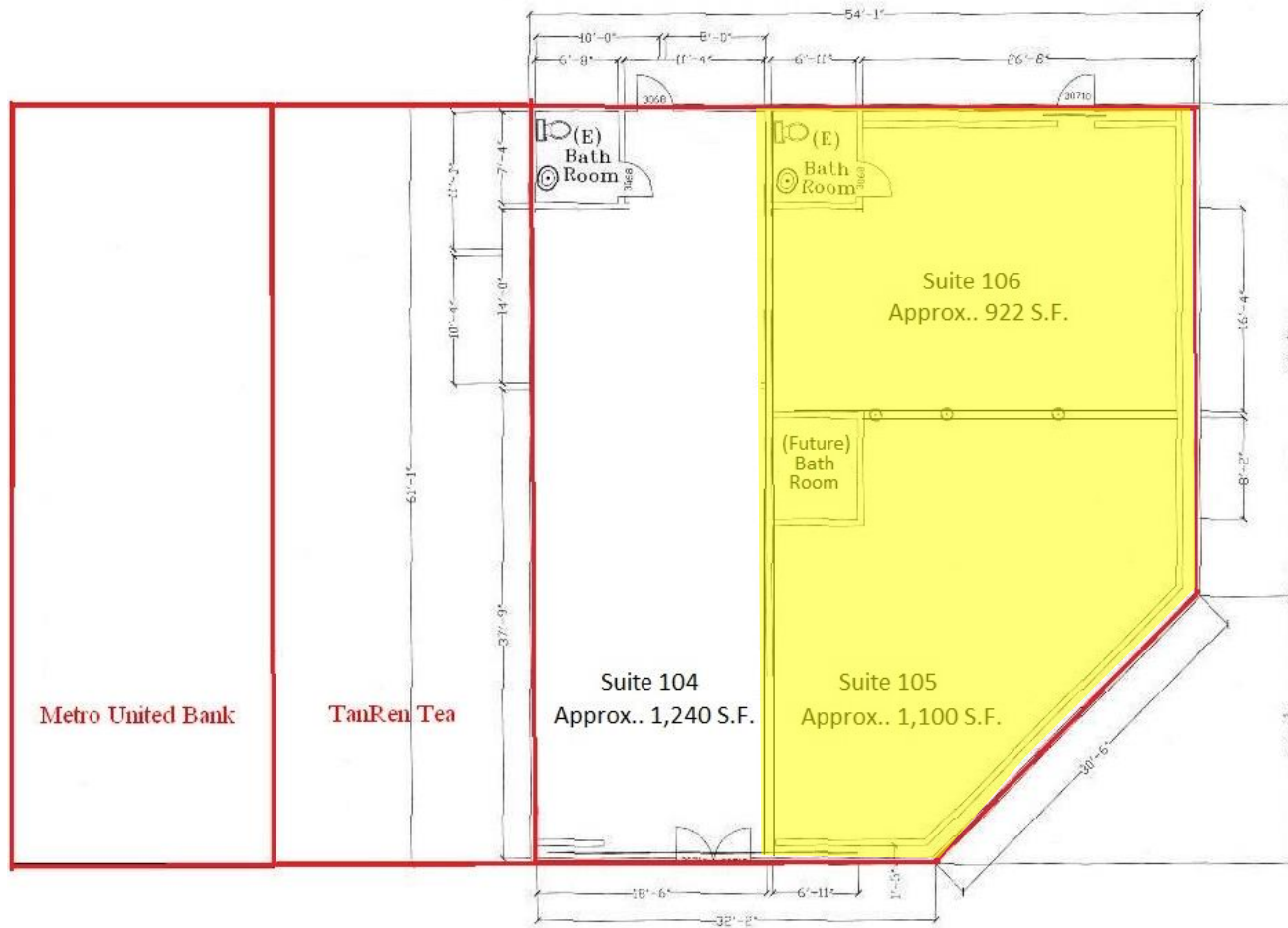
- Long time T-Mobile tenant. New 5 years lease extension.
- 2 Units located on a Hard Corner Site with Unlimited Exposure
- Across from Chase Bank, Starbucks, Popeyes Fried Chicken and Pizza Hut
- Zoning: ALCPD (Alhambra Commercial Planned Development)
- Commercial condo with Association performing common area maintenance
- Shared large parking lot



Raymond Ho
Vice President
DRE# 01868322

Office (626) 458-9000
Cell (626) 297-1228

407 W. VALLEY BLVD, SUITE 4, ALHAMBRA, CA 91803
WWW.GEPROPERTY.COM
DRE# 01841262



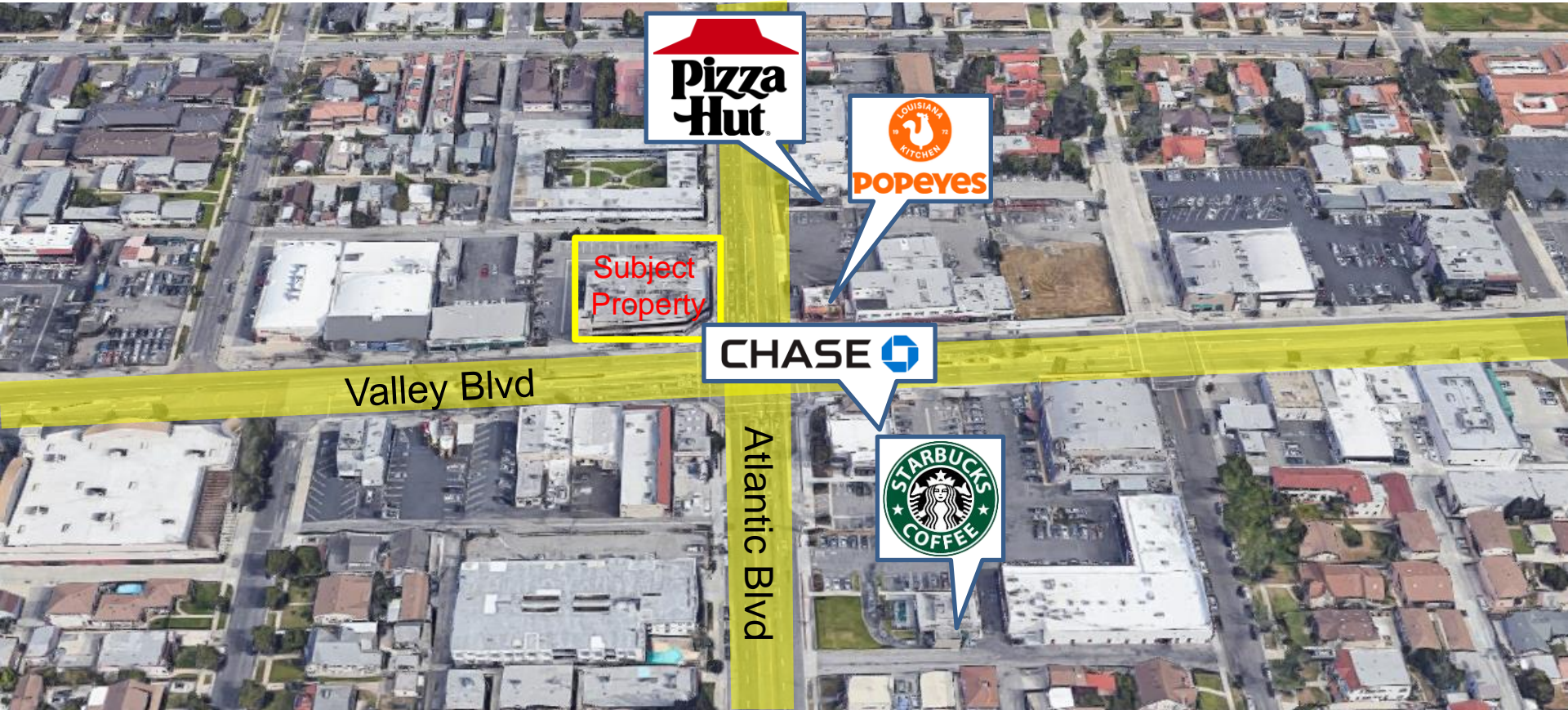
All the dimensions and square footages are approximate. User to verify all the information. Door locations to be determine by future tenant.



Raymond Ho
 Vice President
 DRE# 01868322

Office (626) 458-9000
 Cell (626) 297-1228

407 W. VALLEY BLVD, SUITE 4, ALHAMBRA, CA 91803
 WWW.GEPROPERTY.COM
 DRE# 01841262



Raymond Ho
Vice President
DRE# 01868322

Office (626) 458-9000
Cell (626) 297-1228

407 W. VALLEY BLVD, SUITE 4, ALHAMBRA, CA 91803
WWW.GEPROPERTY.COM
DRE# 01841262

OUR COMPANY

For over 3 decades, GE Property Development, Inc. has provided real estate services for our clients in Los Angeles as well as our clients around the world. We provide a full array of real estate services in the areas of brokerage, development, leasing and management.

Our model is, "Let our results speak for themselves". We feel that our extensive portfolio speaks volumes about our experience and abilities.

Regardless of the real estate need, our firm can provide excellent service with one objective in mind; to meet our client's goals, expectations, and complete satisfaction. In doing so, we are able to increase revenues and decrease cost, demonstrating our unmatched reputation, professionalism, experience, and knowledge in the real estate industry.

GE Property Management, Inc. and its predecessor, Sun West Management, have served its investment clients as a full-service real estate company since 1983. Stephen Chan, the President and Founder of the firm, has been an active broker in the real estate field since 1977. The firm has acted as an acquisition consultant and broker for many local investors, foreign investors, and publicly-traded companies.

CORPORATE HEADQUARTERS

407 West Valley Boulevard, Suite 4
Alhambra, California 91803

Telephone: 626-458-9000
Fax: 626-282-9777
Website: www.geproperty.com
DRE# 01841262



Stephen Chan
President and Founder
DRE# 00676562



Raymond Ho
Vice President
DRE# 01868322

GE PROPERTY

佳富地產