

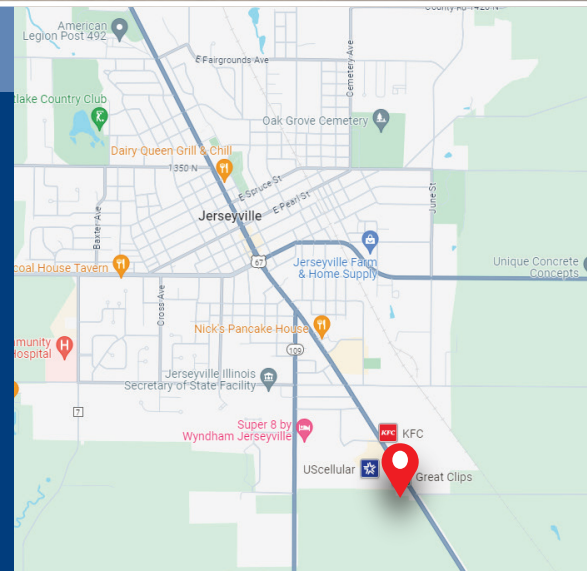
FOR LEASE

1600 South State Street
Jerseyville, IL 62052



PROPERTY HIGHLIGHTS

- 2,000± SF Available
- Strip center located along the busy S. State Street in Jerseyville, IL
- 12,000+ VPD on S. State Street
- Subway and Great Clips neighboring tenants
- 291 SF Frontage w/ 2 curb cuts
- 3.1/1000 Parking Ratio
- **LEASE RATE: \$11/SF NNN**



CONTACT US:

Mel Desemone

Vice President

Mobile: 314-941-3157

Direct: 636-728-5144

mel@gundakercommercial.com



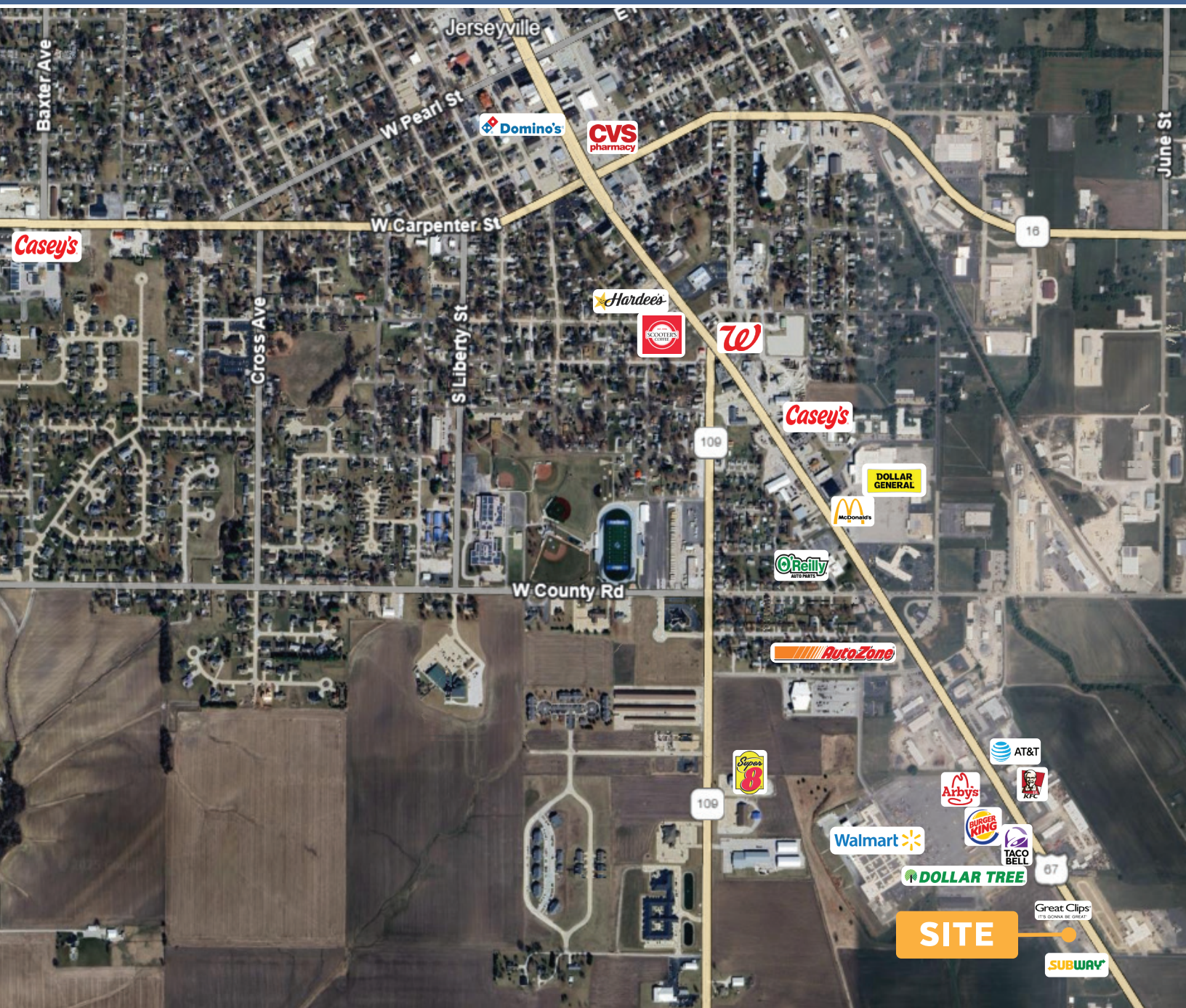
GUNDAKER
COMMERCIAL GROUP

55 Westport Plaza Drive, Ste. 200

St. Louis, MO 63146

M: 636-728-5100 | F: 636-728-5140

gundakercommercial.com [in](#) [@](#) [f](#)



CONTACT US:

Mel Desemone

Vice President

Mobile: 314-941-3157

Direct: 636-728-5144

mel@gundakercommercial.com



GUNDAKER
COMMERCIAL GROUP

55 Westport Plaza Drive, Ste. 200

St. Louis, MO 63146

M: 636-728-5100 | F: 636-728-5140

gundakercommercial.com [in](#) [@](#) [f](#)