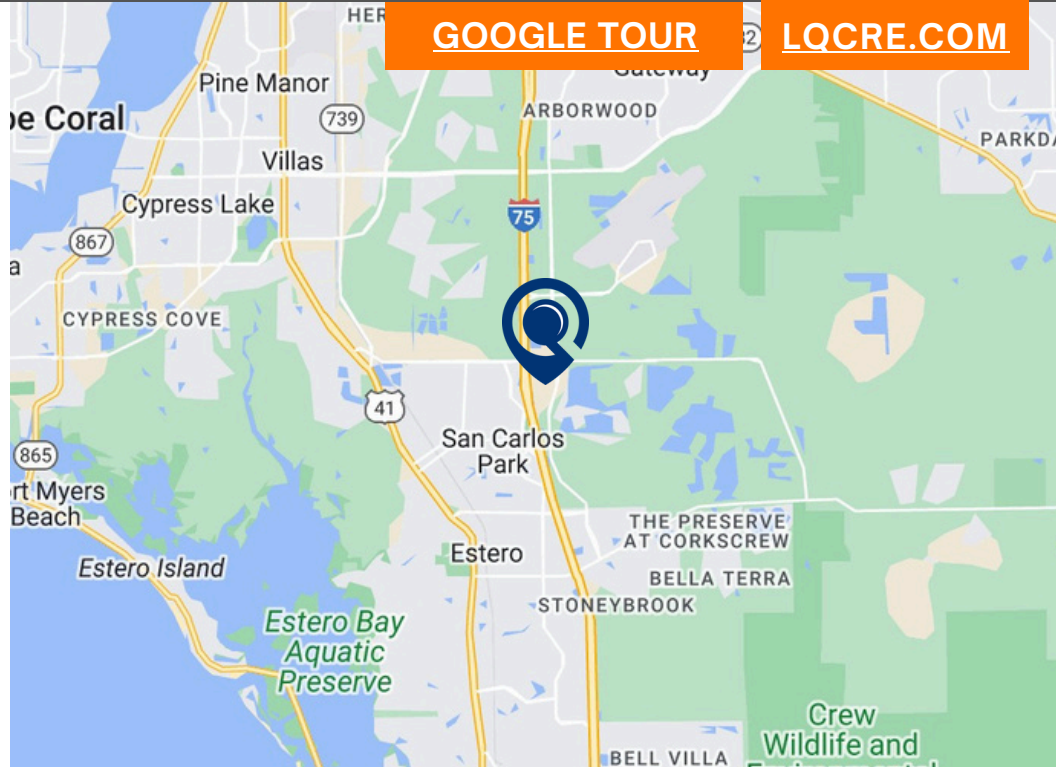
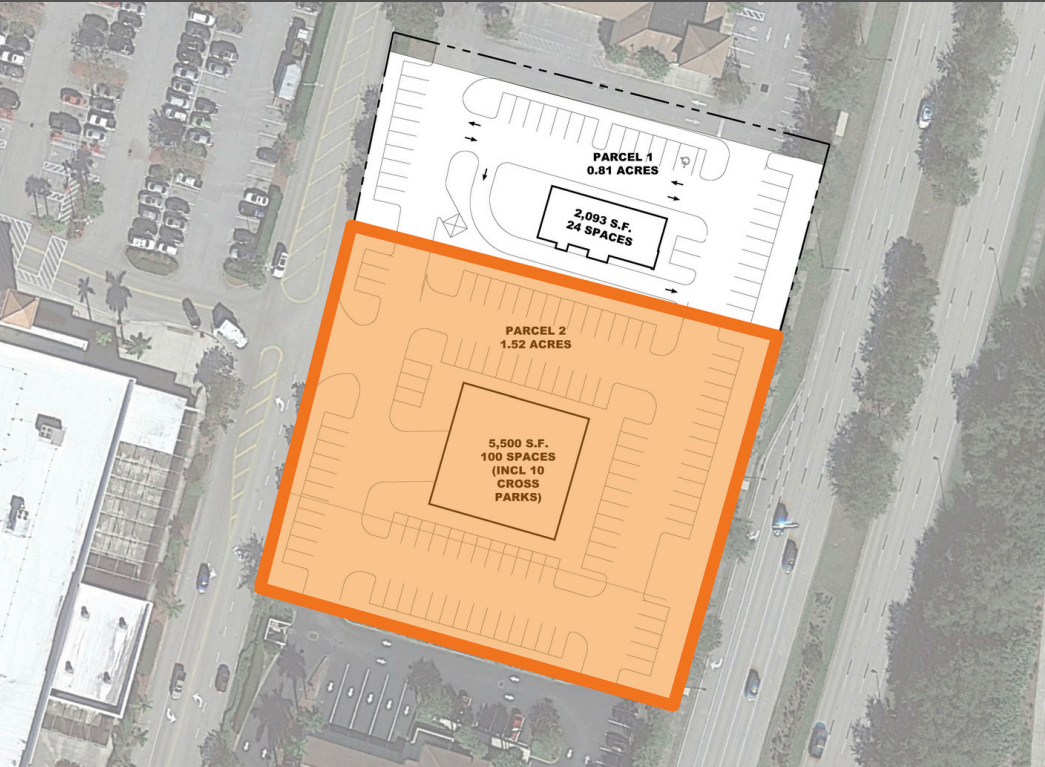


GULF COAST TOWN CENTER OUTPARCEL

17820-17824 Ben Hill Griffin Parkway | Fort Myers, FL 33913

Ground Lease / Build to Suit Lease

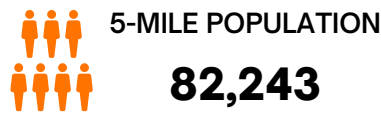


[GOOGLE TOUR](#)

[LQCRE.COM](#)

- Pad-ready site at entrance to 1,300,000 square foot regional mall, Gulf Coast Town Center.
- Co-tenants: Bass Pro Shops, Target, Costco & more.
- Close to I-75, RSW International Airport, Miramar Lakes & Florida Gulf Coast University.

[LQCRE.COM/GULF-COAST-GROUND-LEASE](https://lqcre.com/gulf-coast-ground-lease)



LQ Commercial
REAL ESTATE SERVICES
1614 Colonial Blvd #101
Fort Myers, FL 33907
[LQCRE.COM](https://lqcre.com)

John Mounce
Founding Principal
O: 239.275.4922
D: 239.333.4365
jmounce@lqcre.com

Jessica McEvoy
Senior Associate
D: 239.333.4374
C: 239.220.1535
jmcevoy@lqcre.com

Information obtained from owner(s) or sources deemed reliable. We have no reason to doubt its accuracy, but cannot guarantee it. Property is subject to change or withdraw without notice.

GULF COAST TOWN CENTER OUTPARCEL

17820-17824 Ben Hill Griffin Parkway | Fort Myers, FL 33913
Ground Lease / Build to Suit Lease



LQ Commercial
REAL ESTATE SERVICES

LQCRE.COM



 **LQ Commercial**
REAL ESTATE SERVICES
1614 Colonial Blvd #101
Fort Myers, FL 33907
LQCRE.COM

John Mounce
Founding Principal

O: 239.275.4922

D: 239.333.4365

jmounce@lqcre.com

Jessica McEvoy
Senior Associate

D: 239.333.4374

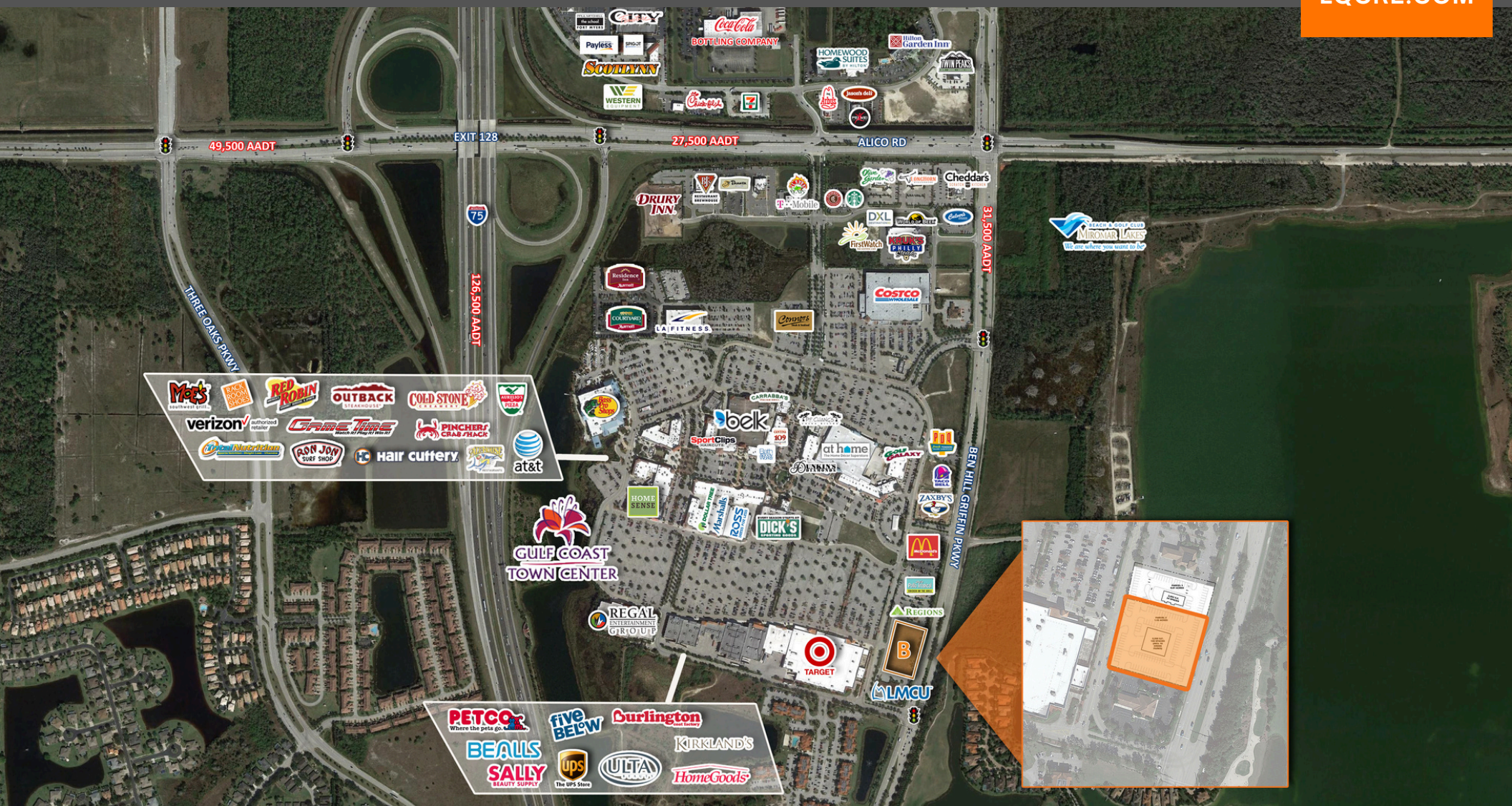
C: 239.220.1535

jmcevoy@lqcre.com

GULF COAST TOWN CENTER OUTPARCEL

17820-17824 Ben Hill Griffin Parkway | Fort Myers, FL 33913

Ground Lease / Build to Suit Lease



LQ Commercial
REAL ESTATE SERVICES
1614 Colonial Blvd #101
Fort Myers, FL 33907
LQCRE.COM

John Mounce
Founding Principal
O: 239.275.4922
D: 239.333.4365
jmounce@lqcre.com

Jessica McEvoy
Senior Associate
D: 239.333.4374
C: 239.220.1535
jmcevoy@lqcre.com

Information obtained from owner(s) or sources deemed reliable. We have no reason to doubt its accuracy, but cannot guarantee it. Property is subject to change or withdraw without notice.