



FOR LEASE

FOREMOST PROPERTY

2413 PACIFIC AVENUE
TACOMA, WA



FOR LEASE

Foremost Property

2413 PACIFIC AVE | TACOMA, WA



Newly renovated building

GENEROUS TI package

HIGHLY visible corner location near LeMay Car Museum, Tacoma Dome and UWT

ON Light Rail route

RETAIL or office use

±1,351 SF space move in ready

±5,042 SF BTS Office Space

±2 spaces can be combined for ±6,393 SF

CONVENIENT access to I-5

LAURA FOX, CCIM
253.722.1441
laura.fox@kidder.com

KIDDER.COM

This information supplied herein is from sources we deem reliable. It is provided without any representation, warranty, or guarantee, expressed or implied as to its accuracy. Prospective Buyer or Tenant should conduct an independent investigation and verification of all matters deemed to be material, including, but not limited to, statements of income and expenses. Consult your attorney, accountant, or other professional advisor.

km Kidder Mathews

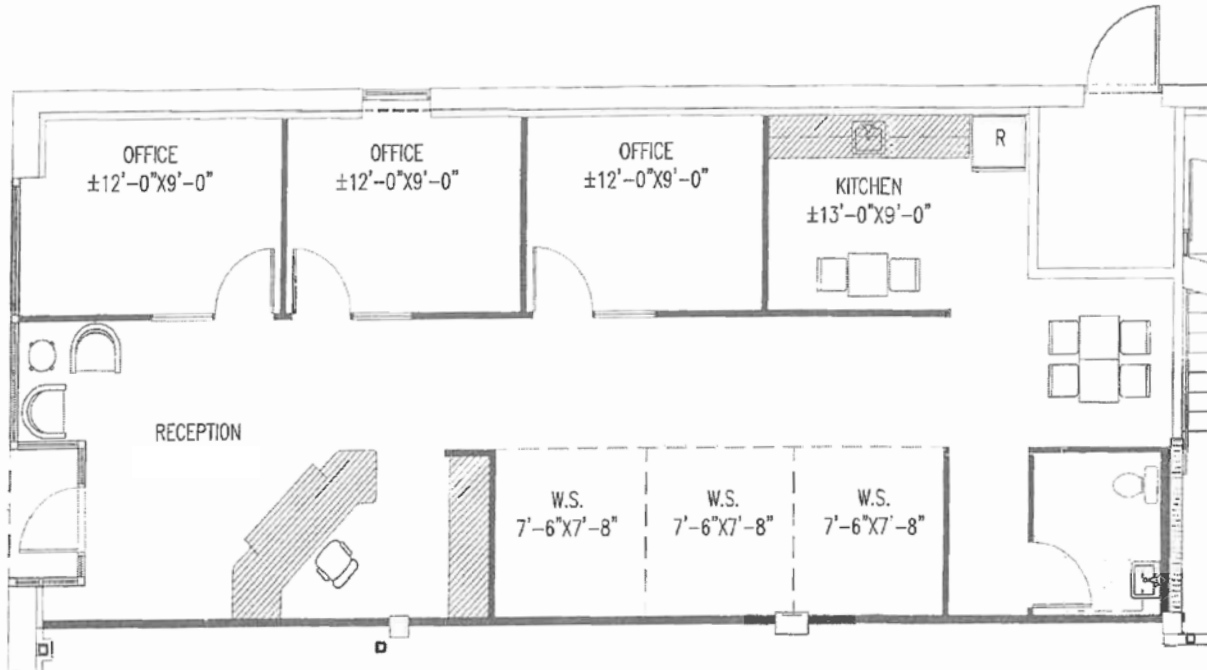
FOR LEASE

Foremost Property

2413 PACIFIC AVE | TACOMA, WA

1,351
SQUARE FEET

MOVE IN
READY



LAURA FOX, CCIM
253.722.1441
laura.fox@kidder.com

KIDDER.COM

This information supplied herein is from sources we deem reliable. It is provided without any representation, warranty, or guarantee, expressed or implied as to its accuracy. Prospective Buyer or Tenant should conduct an independent investigation and verification of all matters deemed to be material, including, but not limited to, statements of income and expenses. Consult your attorney, accountant, or other professional advisor.

km Kidder
Mathews