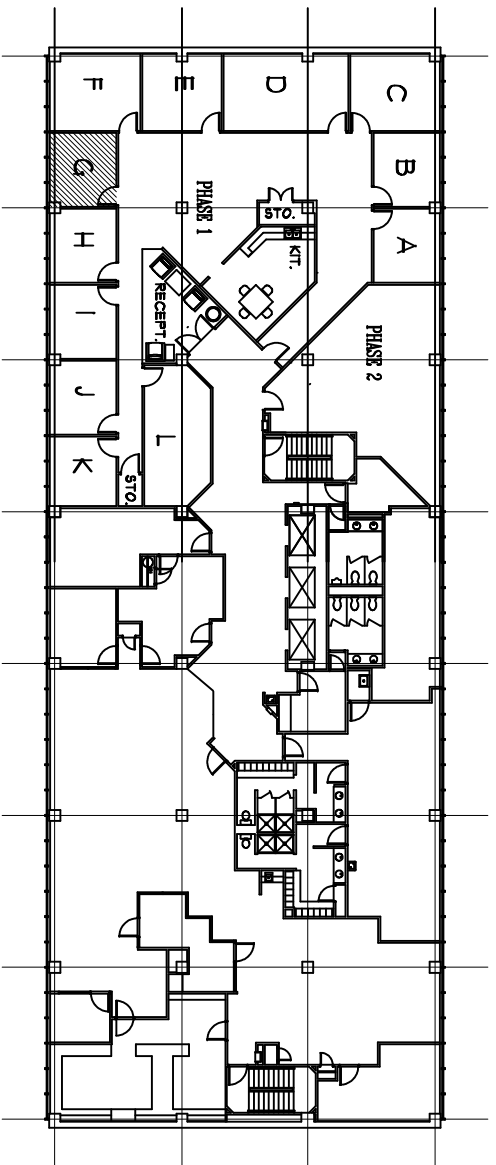


1

OFFICE PLAN - SUITE 900-G--

SCALE: 1/4" = 1'-0"

RENTABLE SPACE = 151 SQ. FT.
 USABLE SPACE = 136 SQ. FT.



KEY PLAN NOT TO SCALE

DATE	08-03-2020
REVISIONS	



**D.C. BROADSTONE II
 ARCHITECT**
 5025 N. CENTRAL EXPWY. DALLAS, TEXAS 214.521.3680



NEW LAYOUT FOR SUITE 711
TURLEY LAW CENTER
 6440 NORTH CENTRAL EXPWY. DALLAS, TEXAS

SHEET NO.
A1.7
 of