

29319 Clayton Avenue

WAREHOUSE OR MANUFACTURING SPACE AVAILABLE

29319 Clayton Ave

WAREHOUSE OR MANUFACTURING SPACE

Total Available Space	30,803 SF
- Warehouse Space	29,803 SF
- Office Space	1,000 SF

Sprinklers	Wet
------------	-----

Unit Heaters	In Place
--------------	----------

Lighting	Motion censored LED lighting
----------	------------------------------

Clear Height	16'-17'
--------------	---------

Docks	2 - 8' x 10'; Mechanical dock levelers & seals
-------	---

Drive-Ins	2 - 18' x 18'; 1 - 10' x 12'
-----------	---------------------------------

Power	(480V/600A) 3PH
-------	-----------------

2 Large Private Offices; breakroom with 2 bathrooms

30,803 SF

AVAILABLE SPACE

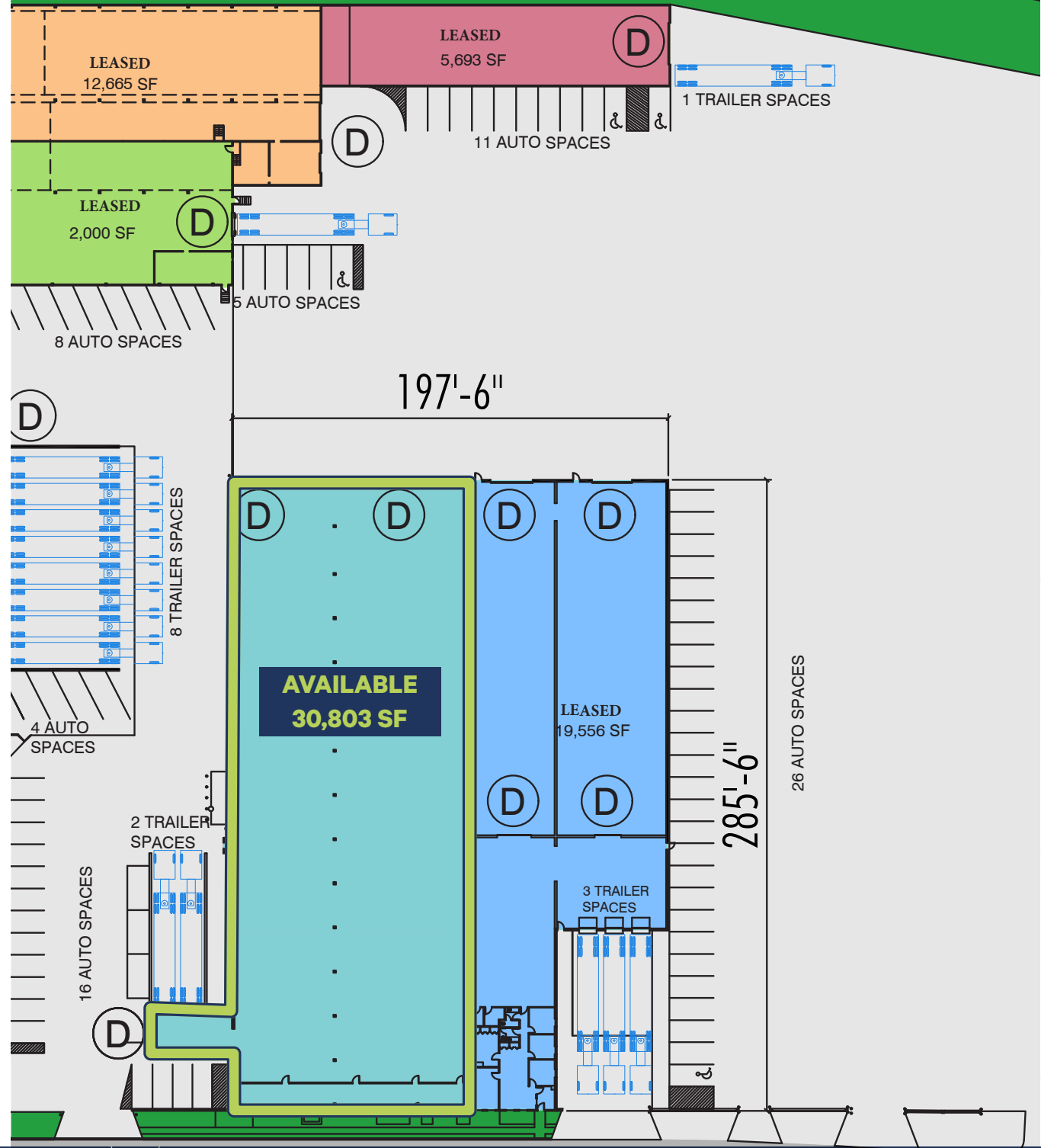
Industrial

ZONING

\$4.50/SF NNN

LEASE RATE

Site Plan





Area Demographics - 5 Mile Radius

\$83,732

Avg. Household
Income

69,838

Employees

137,965

Population

64,527

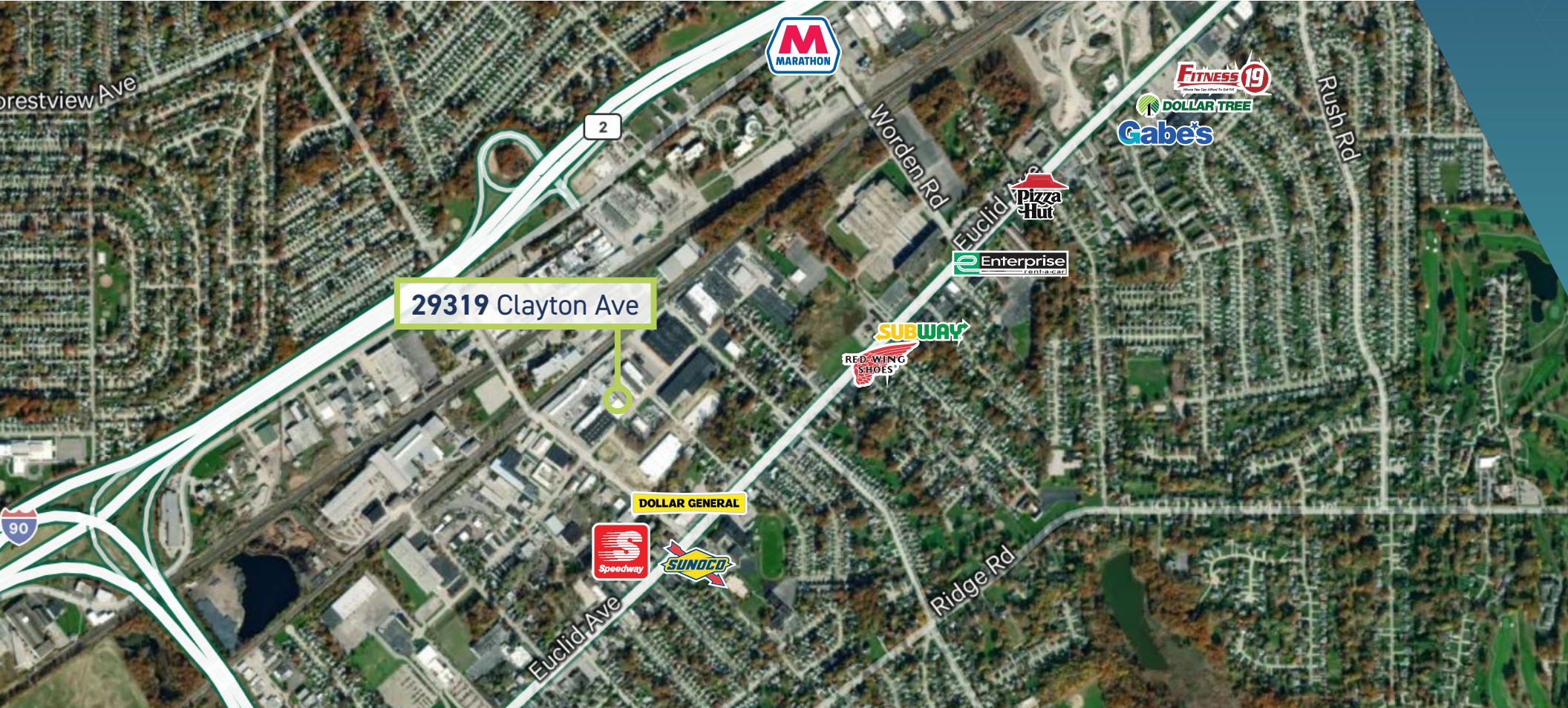
Households

\$243,219

Avg. Household
Value

44.0

Median Age



29319 Clayton Avenue

WAREHOUSE OR MANUFACTURING SPACE AVAILABLE



CONTACTS

Fred Herrera
Senior Vice President
+1 216 363 6408
fred.herrera@cbre.com

Nick Smith
Associate
+1 440 212 6715
nick.smith1@cbre.com

CBRE
950 Main Avenue
Suite 200
Cleveland, Ohio 44113

FOR LEASE | WICKLIFFE, OHIO 44092

CBRE

© 2024 CBRE, Inc. All rights reserved. This information has been obtained from sources believed reliable but has not been verified for accuracy or completeness. CBRE, Inc. makes no guarantee, representation or warranty and accepts no responsibility or liability as to the accuracy, completeness, or reliability of the information contained herein. You should conduct a careful, independent investigation of the property and verify all information. Any reliance on this information is solely at your own risk. CBRE and the CBRE logo are service marks of CBRE, Inc. All other marks displayed on this document are the property of their respective owners, and the use of such marks does not imply any affiliation with or endorsement of CBRE. Photos herein are the property of their respective owners. Use of these images without the express written consent of the owner is prohibited. Licensed Real Estate Broker.