



Main Floor Showroom & Warehouse for Lease

Property Details

Property Type: Warehouse/Showroom

Unit Size: ±3,081 SF (TBV)

Warehouse: ±2,081 SF

Showroom/Office: ±1,000 SF

Year Built: 1969

Zoning: I-R (Industrial-Redevelopment)

Loading: One 14' x 10' overhead drive-in door

Power: 100 amp (TBV)

Parking: 6 stalls (4 rear, 2 front)

Ceiling Height: 15'6" clear

Rate: \$16.00/SF NET

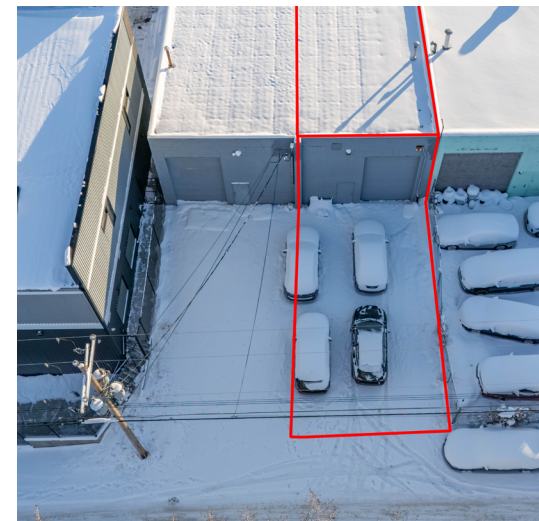
OP Costs: \$6.29/SF

Brad Stone, Associate Broker
403-613-2898 | brad@cvpartners.ca

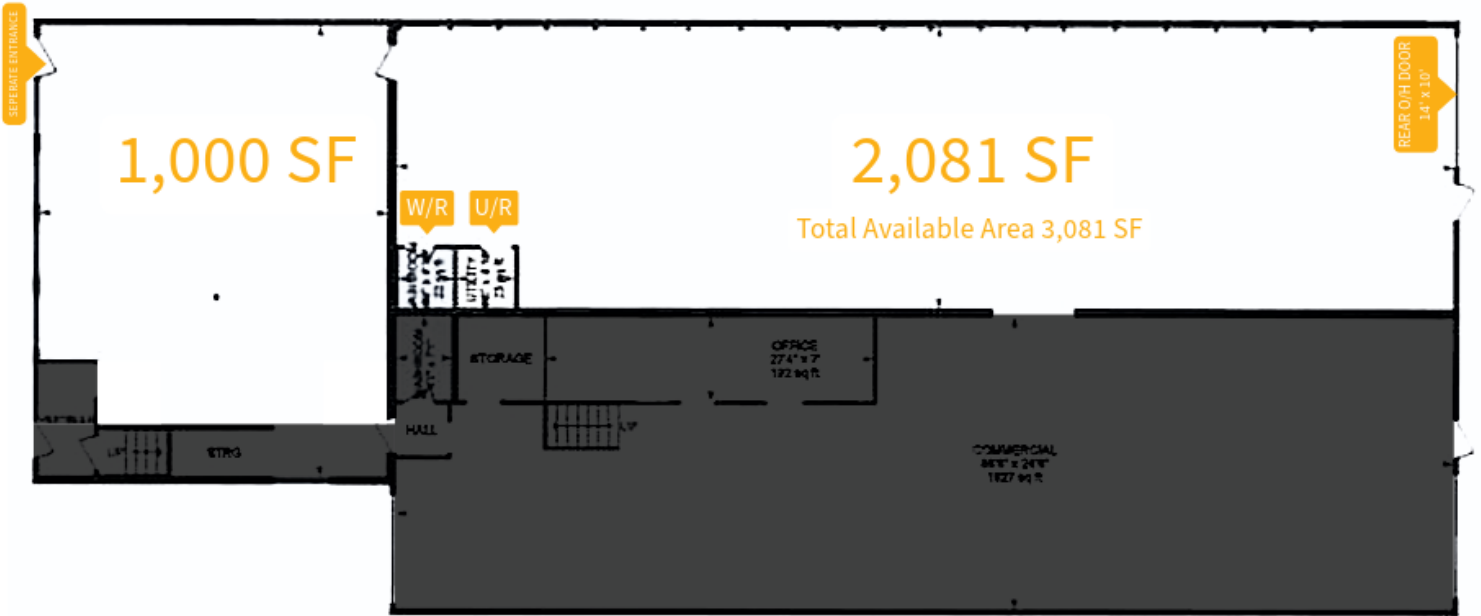
Unit Features

Available immediately in Greenview Industrial Park. This main floor space offers an exceptional leasing opportunity totalling ±3,081 SF. This versatile space is zoned I-R providing multiple commercial possibilities.

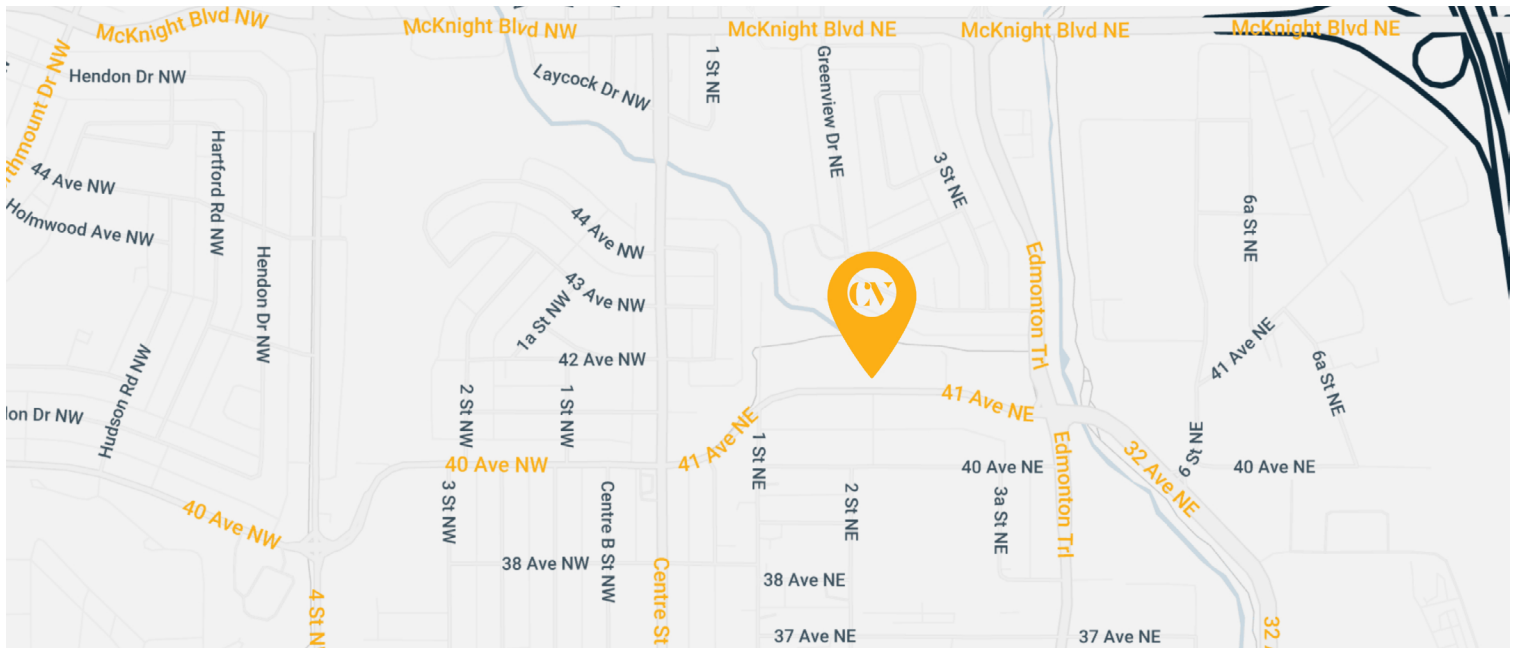
This demised main floor unit includes separate entrance, flexible commercial area of ±1,000 SF with additional warehouse space of ±2,081 SF with washroom and utility room located in warehouse. One over-head loading door at rear and parking available on site.



Brad Stone, Associate Broker
403-613-2898 | brad@cvpartners.ca



312 41 Avenue NE | **Location**



Brad Stone, Associate Broker
403-613-2898 | brad@cvpartners.ca