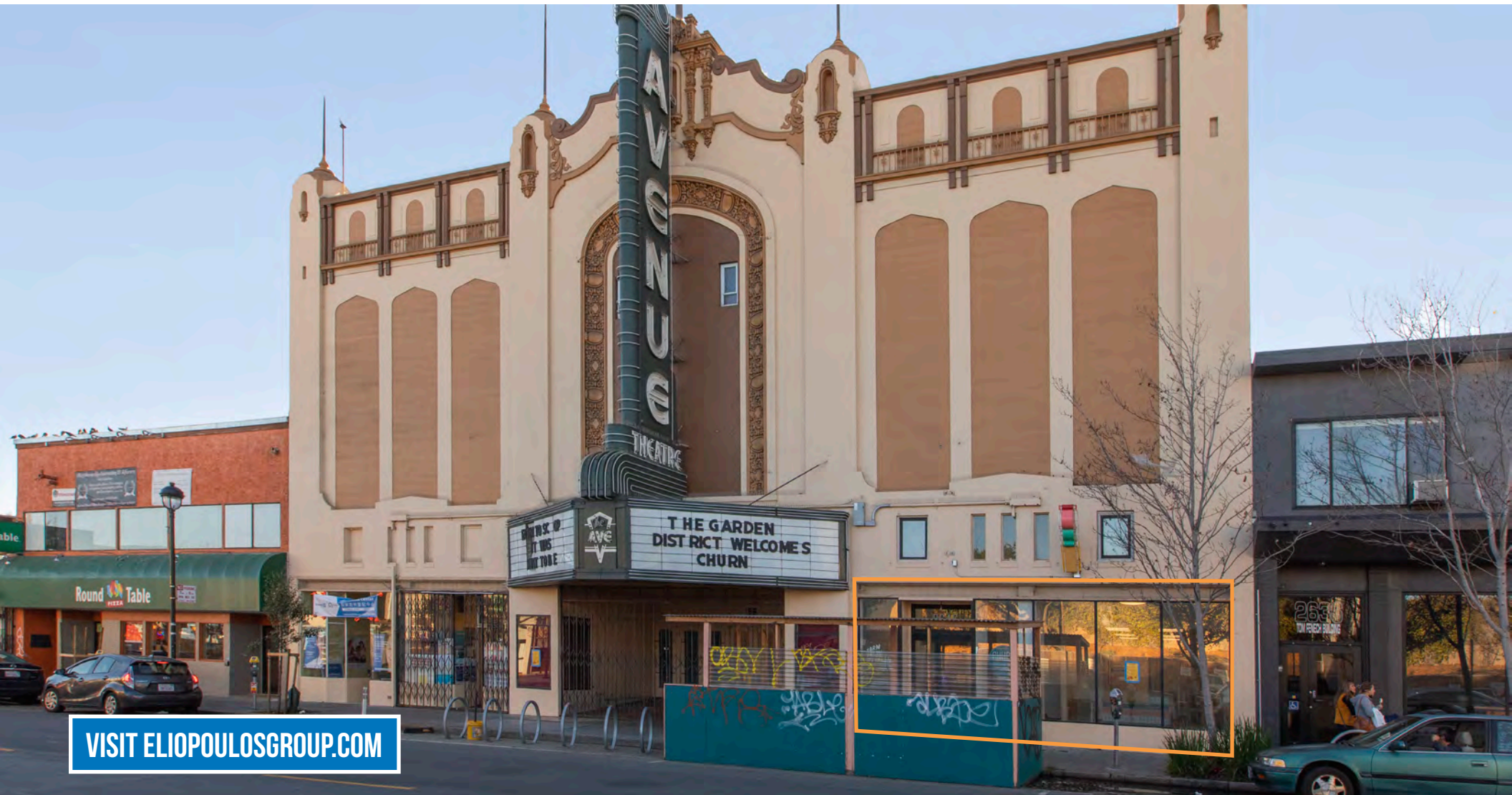


2646 SAN BRUNO AVENUE

FOR LEASE | TURN KEY FOOD AND BEVERAGE SPACE - PORTOLA DISTRICT



VISIT ELIOPOULOSGROUP.COM

2646 SAN BRUNO AVENUE

PROPERTY SUMMARY

ADDRESS

2646 San Bruno Avenue, San Francisco, CA 94124

AVAILABLE SPACE

+/- 1,000 Square Feet

RENTAL RATE

\$3,750 / Month, Industrial Gross

AVAILABLE

Immediately

BUILDING ATTRIBUTES

- + Ideal For Food & Beverage
- + Recent Build Out
- + ADA Restroom
- + ADA Entrance
- + All Glass Storefront - Great Natural Light
- + Excellent Parklet Location
- + High Foot & Vehicle Traffic



2646 SAN BRUNO AVENUE



2646 SAN BRUNO AVENUE

LOCATION OVERVIEW

Desirable Portola District location, walkable to nearby amenities, public transportation and to surrounding neighborhoods.



02 MIN to Bacon St Muni
06 MIN to Silver Ave Muni



10 MIN to Dogpatch District
16 MIN to Potrero Hill
20 MIN to Mission District



02 MIN to 101 On-Ramp
05 MIN to 280 On-Ramp



SF MUNI
44, 8, 9
ROUTE

US
101

San Bruno Avenue

Bacon Street

SF MUNI
54, 8, 9
ROUTE

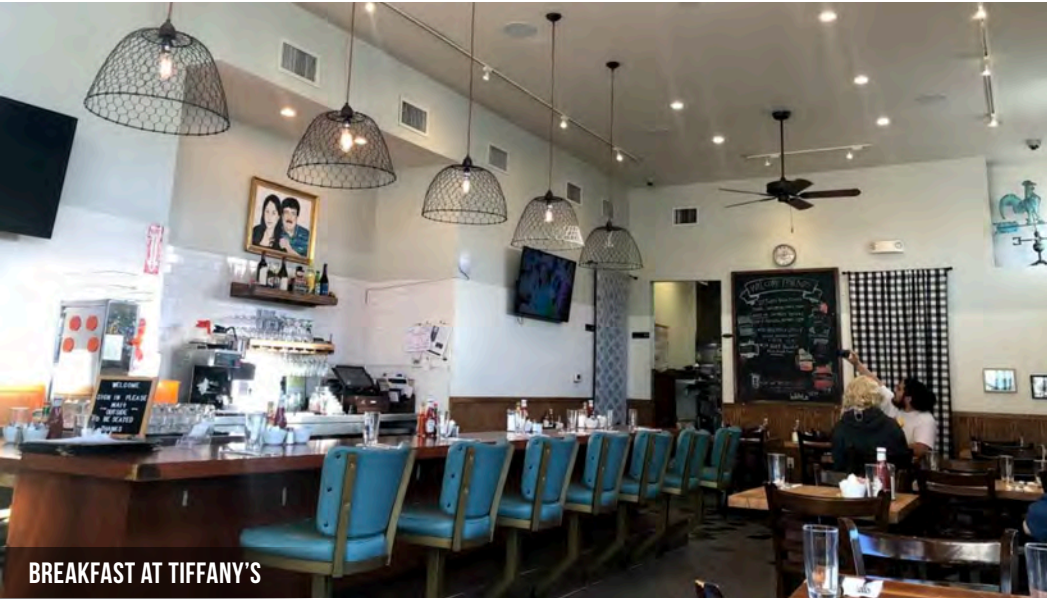
2646 SAN BRUNO AVENUE

NEARBY AMENITIES

- 1..... Pupusería Ilobasco
- 2..... Round Table Pizza
- 3..... Bank of the West
- 4..... La Loma Produce
- 5..... United States Postal Service
- 6..... Ramen House
- 7..... Imperial Garden Seafood
- 8..... Subway
- 9..... Hawaiian Drive Inn
- 10..... Four Barrel Coffee Portola
- 11..... Sterling Bank & Trust
- 12..... Wing Hing Restaurant
- 13..... Dim Sum Kitchen
- 14..... Five Degree Tea House
- 15..... O'Reilly Auto Parts
- 16..... Breakfast At Tiffany's
- 17..... Walgreens
- 18..... San Bruno Supermarket
- 19..... Bank of America
- 20..... Jim Georgie's Donuts
- 21..... Golden State Pizza & Grill
- 22..... Shell Gas Station
- 23..... Palega Recreation Center



2646 SAN BRUNO AVENUE



BREAKFAST AT TIFFANY'S



IMPERIAL GARDEN SEAFOOD RESTAURANT



RAMEN HOUSE



FOUR BARREL COFFEE



PALEGA RECREATION CENTER

TCP
TOUCHSTONE
COMMERCIAL PARTNERS

Corp. Lic. 01112906
www.tcpri.com

2646 SAN BRUNO
AVENUE



VISIT ELIOPOULSGROUP.COM

 **Eliopoulos**Group

JARON ELIOPOULOS
415.608.6336 | jaron@tcpri.com

CAMERON TU
510.919.8193 | cameron@tcpri.com

The information presented has been secured from sources we believe to be reliable but we make no representations or warranties, expressed or implied, as to the accuracy of the information. Lessee must verify the information and bears all risk for any inaccuracies.