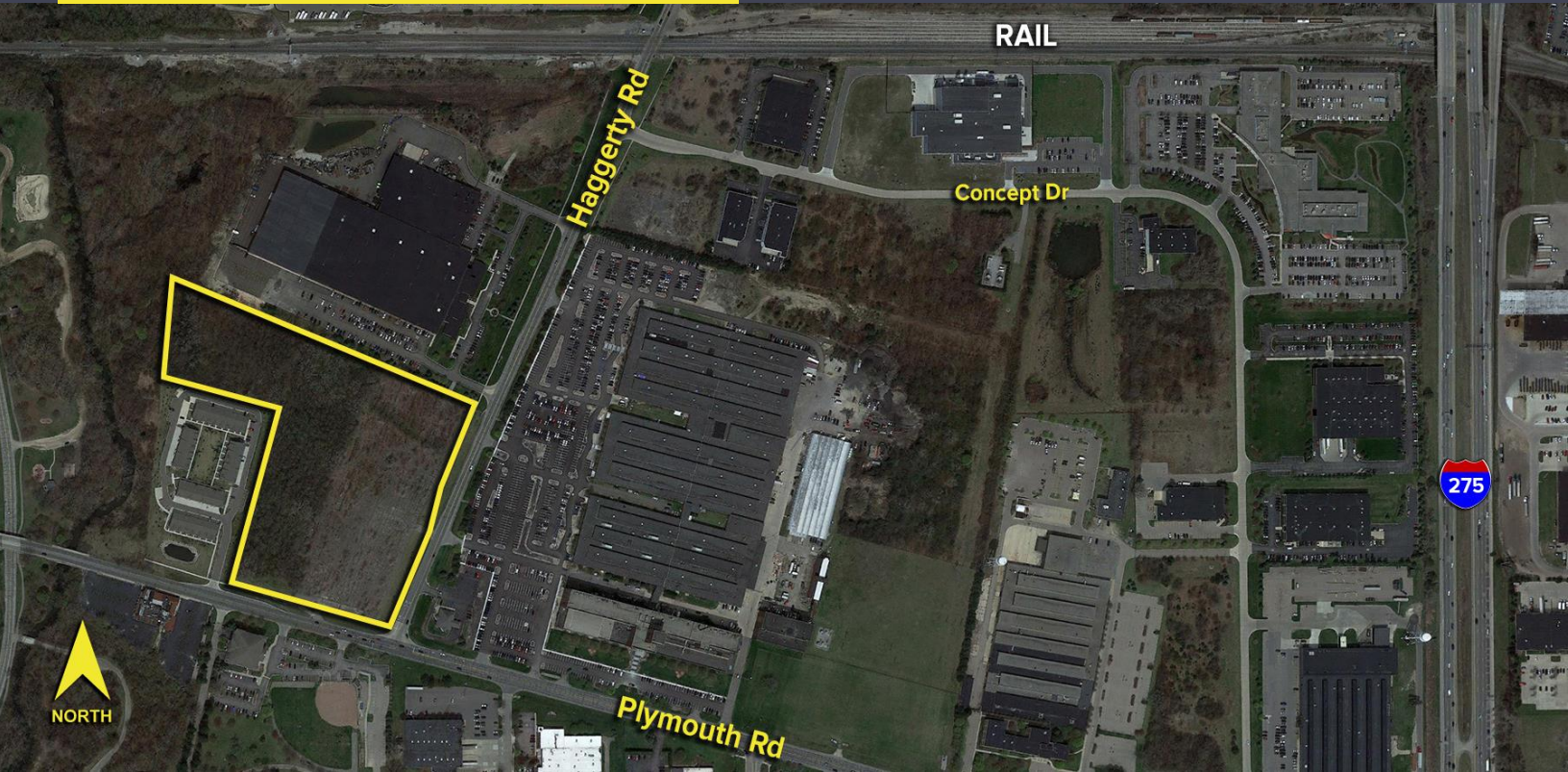


# HAGGERTY ROAD PLYMOUTH TWP., MICHIGAN

VACANT LAND FOR SALE  
15.10 Acres Available



**SIGNATURE  
ASSOCIATES**  
KNOW SIGNATURE | KNOW RESULTS



## PROPERTY FEATURES

- 15.10 acres available
- Zoned Commercial C-2
- Note that while entire parcel is zoned C-2, Plymouth Twp. has agreed to allow a portion of this parcel to be re-zoned Industrial, Hi-Tech, and Office as well as Commercial
- Great commercial corner at Plymouth Road & Haggerty Road
- 12 usable acres
- Sale price: \$1,600,000 (\$105,960.27/acre)



For more information, please contact:

**STEVE GORDON**

(248) 948 0101

sgordon@signatureassociates.com

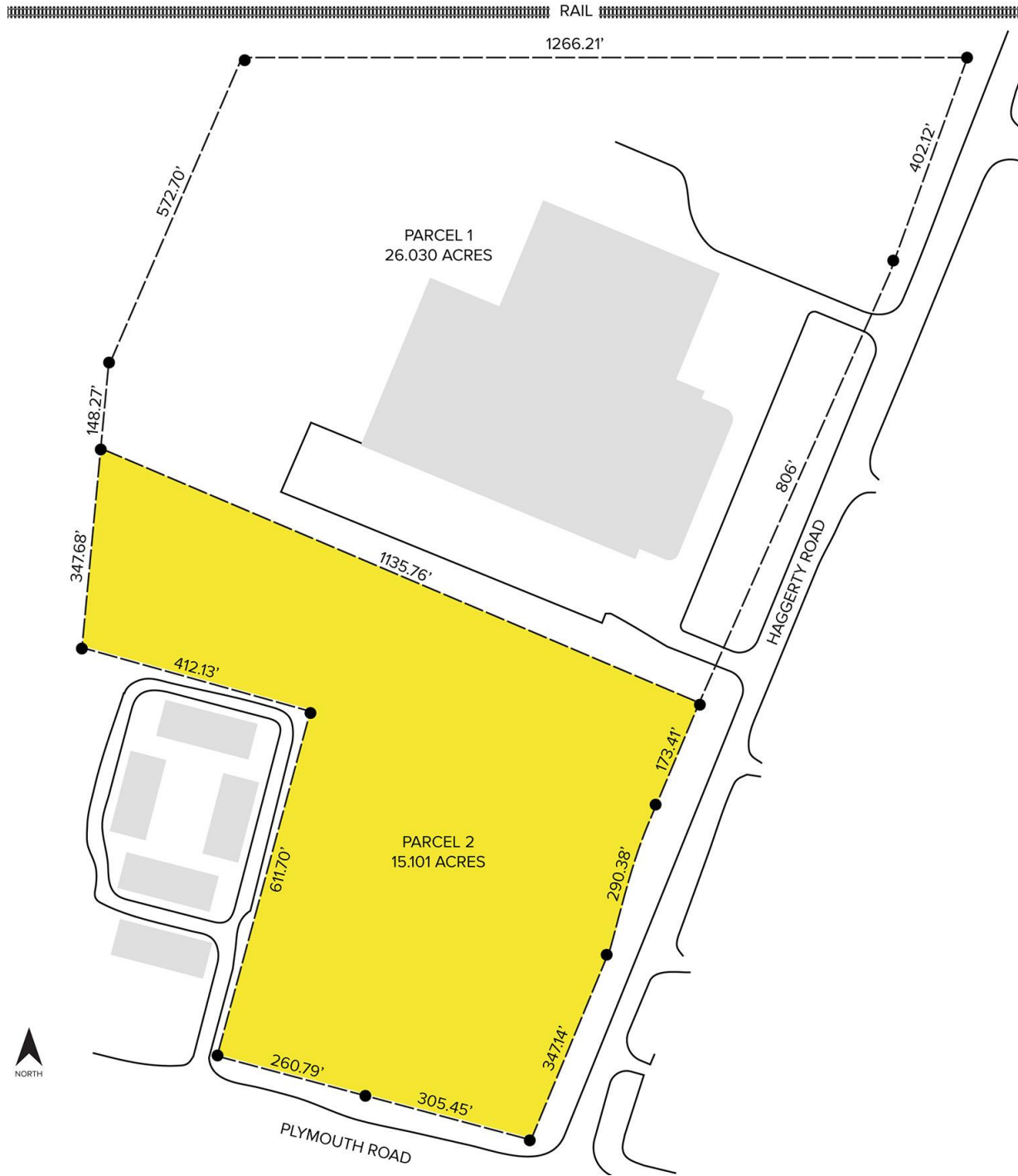
**SIGNATURE ASSOCIATES**  
One Towne Square, Suite 1200  
Southfield, MI 48076  
www.signatureassociates.com

# Haggerty Road – Plymouth Township, Michigan

## Land For Sale

15.10  
Acres  
AVAILABLE

### Site Plan



For more information, please contact:

**STEVE GORDON**

(248) 948 0101

sgordon@signatureassociates.com

**SIGNATURE ASSOCIATES**

One Towne Square, Suite 1200

Southfield, MI 48076

www.signatureassociates.com

Information is subject to verification and no liability for errors or omissions is assumed. Price is subject to change and listing withdrawal.