

FOR LEASE

Hanbury Office Park

131-135 Hanbury Road, Chesapeake, Virginia



THALHIMER

1,080 SF – 4,084 SF AVAILABLE

**Two 12,000 SF
Office Buildings**

PROPERTY FEATURES

PROPERTY FEATURES

- Hanbury Office Park consists of two +/-12,000 SF office buildings
- Available:
 - Suite A: 4,084 SF (can be subdivided)
 - Suite C-1: 1,115 SF
- Attractive interior finishes – Move in ready
- Excellent access to the Chesapeake Expressway (168 Bypass)
- Lease Rate: \$18.00 SF, net of janitorial

Professional Neighbors Include

Edward Jones

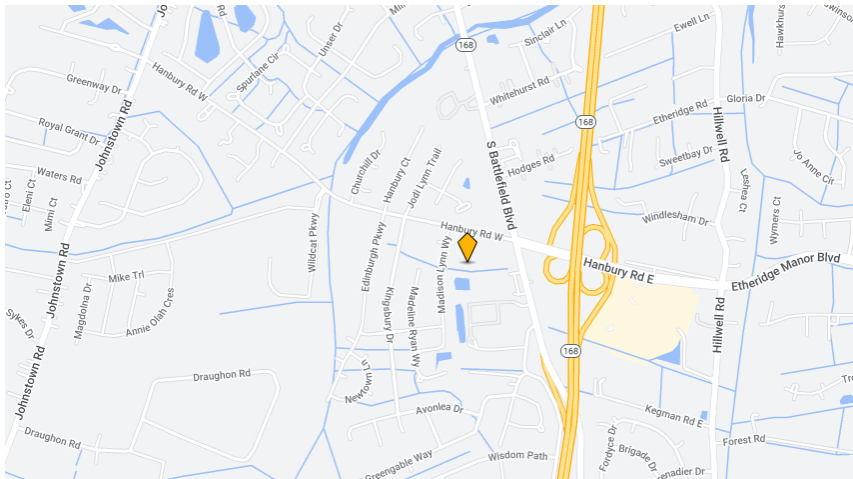


FARM CREDIT

PIVOT
PHYSICAL THERAPY

Community Finance

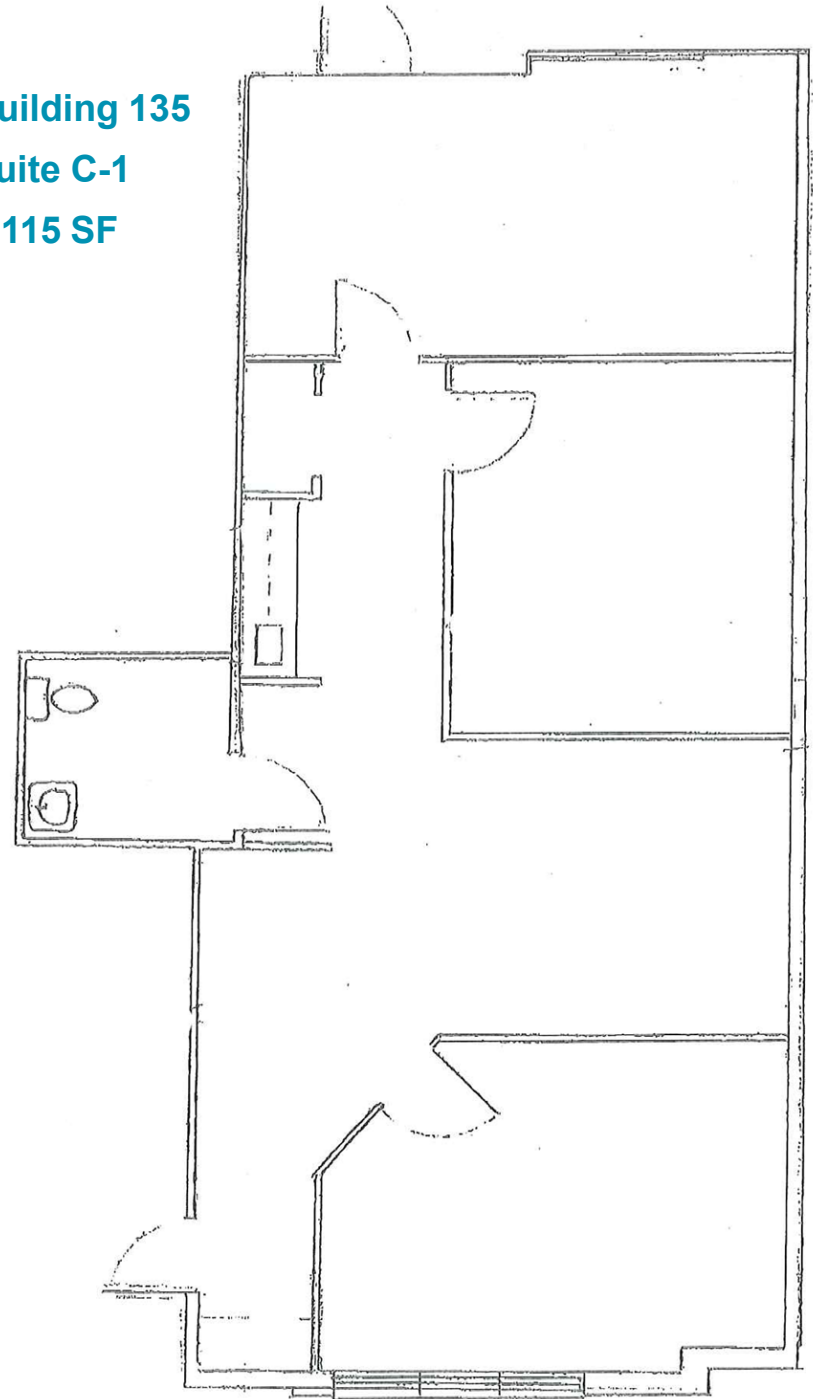
CWS
CHARLES W. SNADER, P.C.
VISION. CAPABILITY. CONFIDENCE.



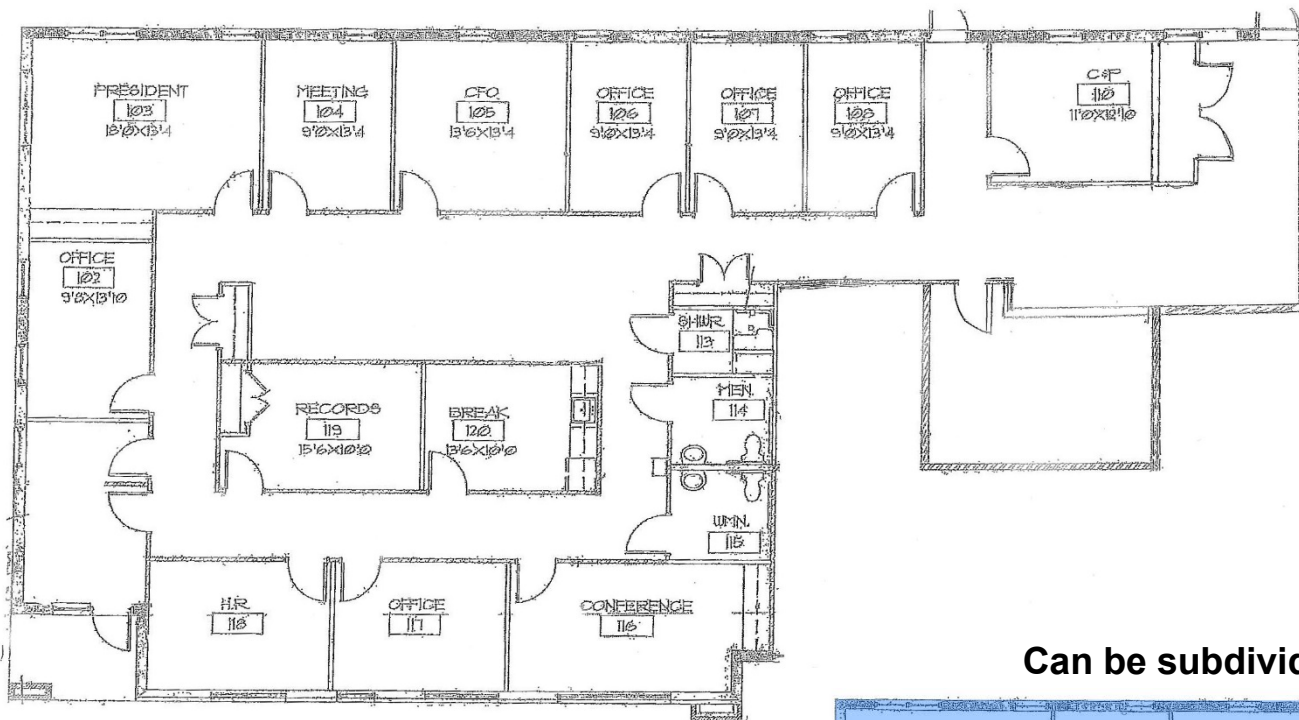
Building 135

Suite C-1

1,115 SF

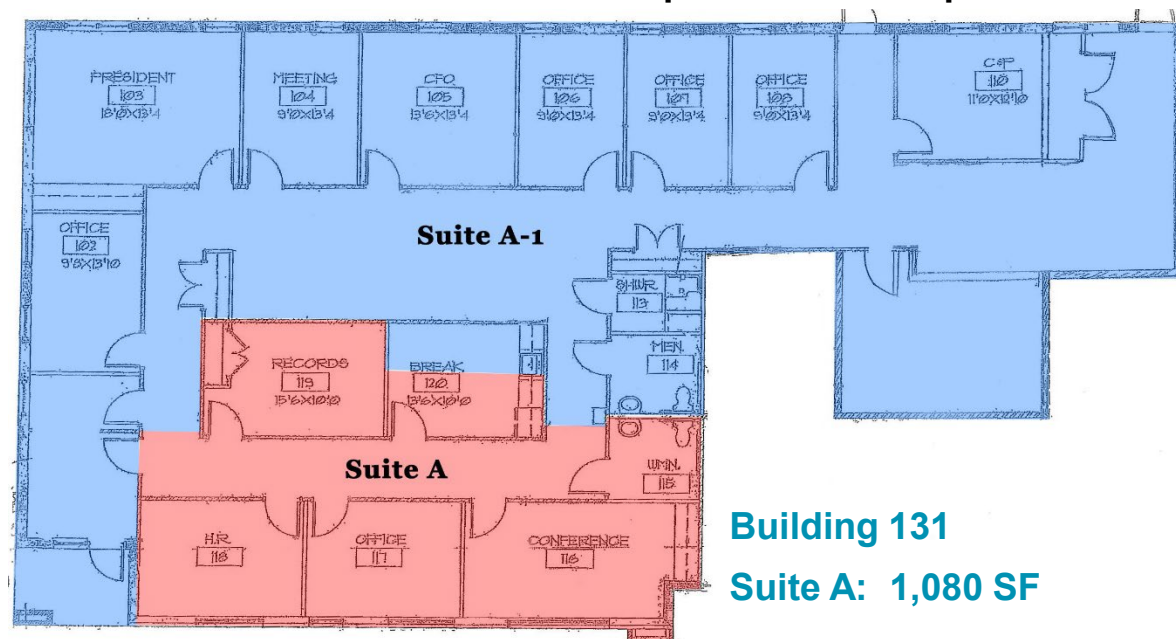


SITE PLANS



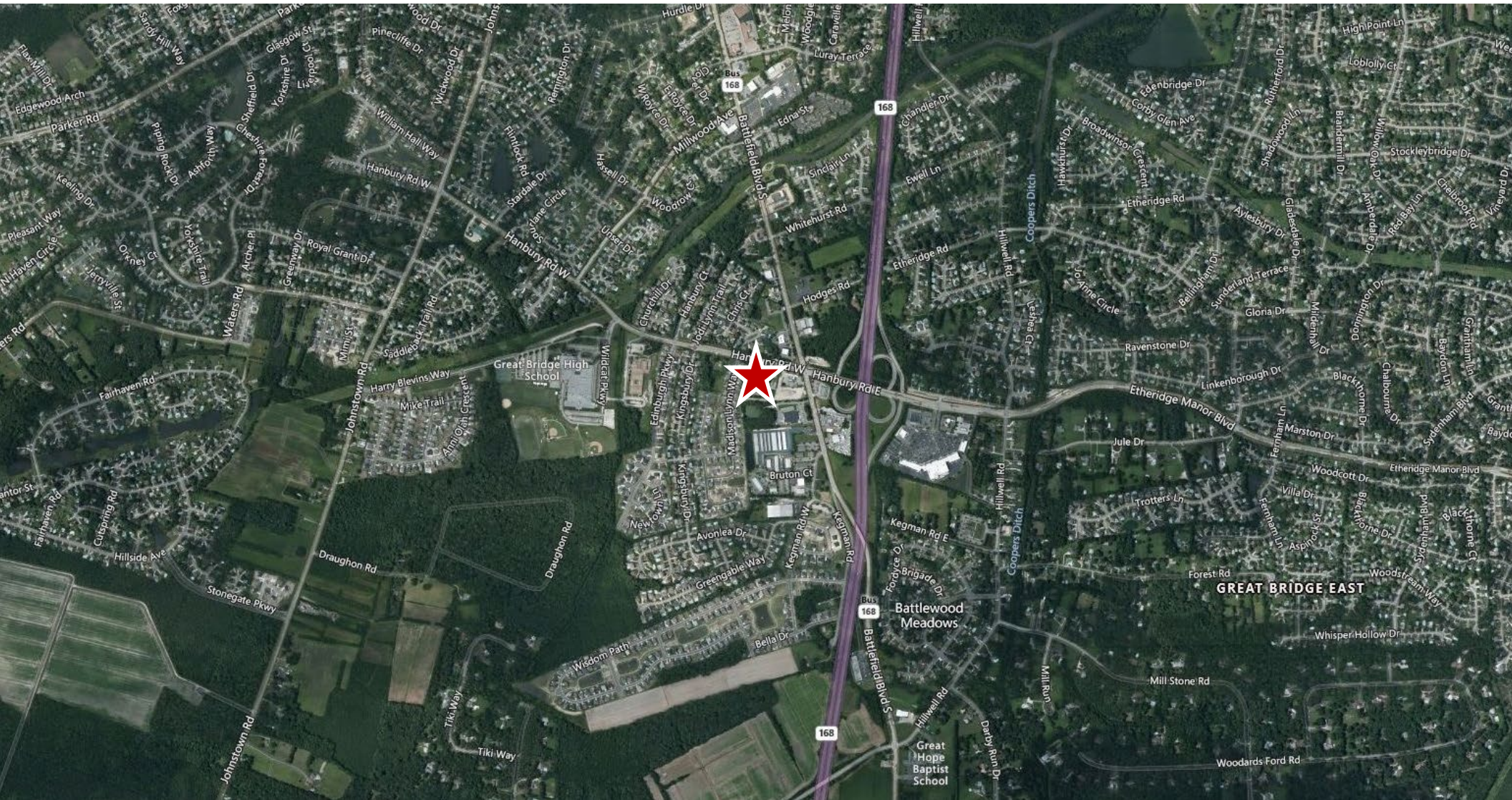
Building 131
Suite A - 4,084 SF

Can be subdivided – Sample subdivision plan



Building 131
Suite A-1: 3,004 SF

Building 131
Suite A: 1,080 SF



Christine Kaempfe, SIOR
Senior Vice President
757 499 1384
Christine.Kaempfe@thalhimer.com

Independently Owned and Operated / A Member of the Cushman & Wakefield Alliance

Cushman Wakefield | Thalhimer ©2023. No warranty or representation, express or implied, is made to the accuracy or completeness of the information contained herein, and same is submitted subject to errors, omissions, change of price, rental or other conditions, withdrawal without notice, and to any special listing conditions, imposed by the property owner(s). As applicable, we make no representation as to the condition of the property (or properties) in question.