

E Washington Ave

1550-1600 E Washington Ave
Des Moines, Iowa
www.cbre.com/desmoines

Available Space

- + Suite 15503
 - 25,000 to 55,878 SF
 - Will consider demising the space
 - 13 Dock doors with levelers

Lease Rate

- + \$4.95/SF NNN
- + Operating expenses est. 2024: \$2.49/SF

Building Features

- + 22' Clear Height
- + Class I-IV sprinkler coverage (.365 GPM over 2,600 SF)
- + Finished office space
- + Located in popular industrial park near I-80/35



Contact Us

Marty Herrmann

Vice President
+1 515 415 6113
marty.herrmann@cbre.com
Licensed in the State of Iowa.

Chris Pendroy, CCIM, SIOR

Senior Vice President
+1 515 402 6600
chris.pendroy@cbre.com
Licensed in the State of Iowa.

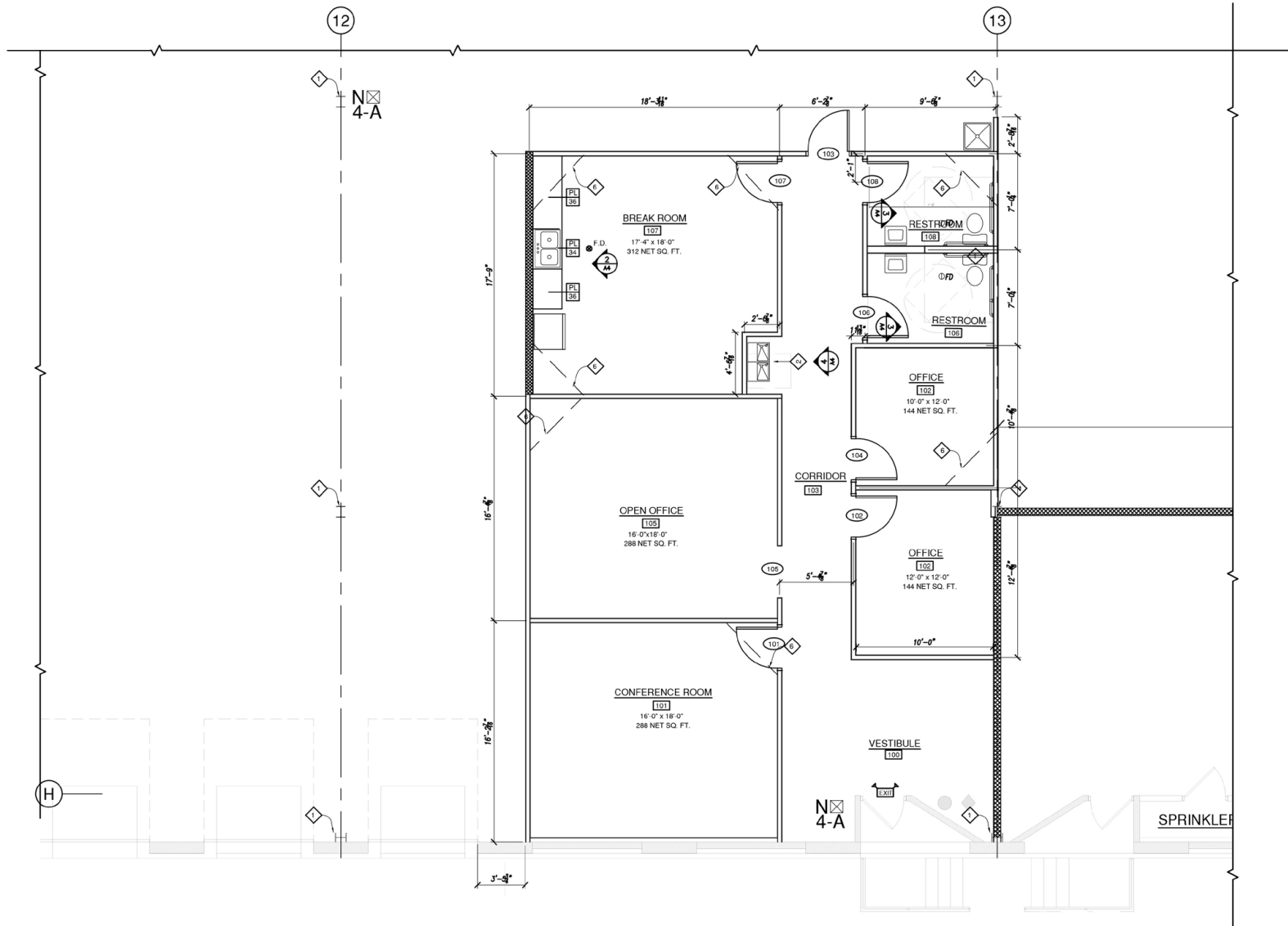
Grant Wright, CCIM

First Vice President
+1 515 745 5113
grant.wright@cbre.com
Licensed in the State of Iowa.

Space Available



Suite 15503 Floor Plan

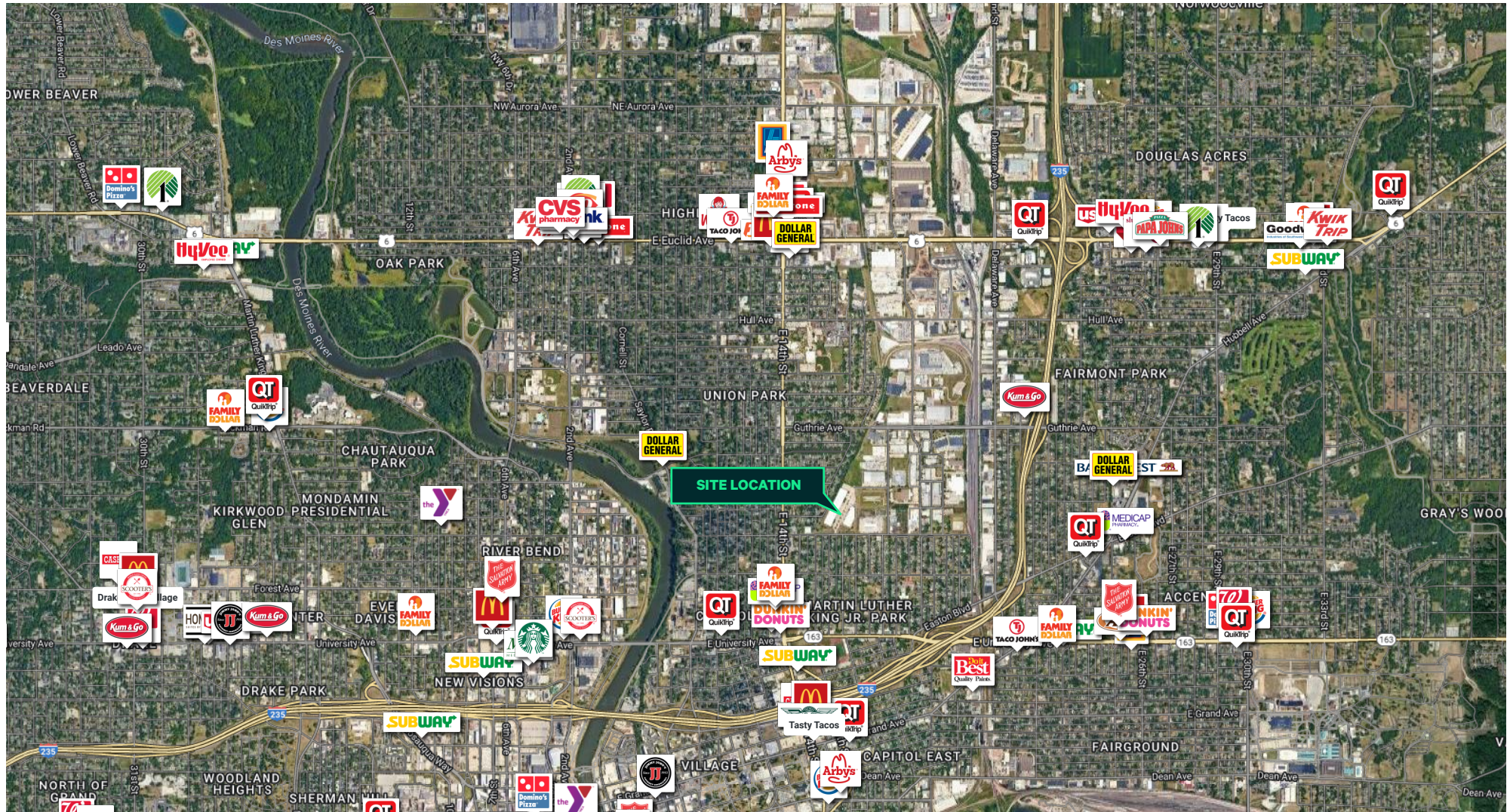


E Washington Ave

1550-1600 E Washington Ave | Des Moines, Iowa

For Lease

Location



© 2024 CBRE, Inc. All rights reserved. This information has been obtained from sources believed reliable, but has not been verified for accuracy or completeness. You should conduct a careful, independent investigation of the property and verify all information. Any reliance on this information is solely at your own risk. CBRE and the CBRE logo are service marks of CBRE, Inc. All other marks displayed on this document are the property of their respective owners, and the use of such logos does not imply any affiliation with or endorsement of CBRE. Photos herein are the property of their respective owners. Use of these images without the express written consent of the owner is prohibited.

www.cbre.com/desmoines

