

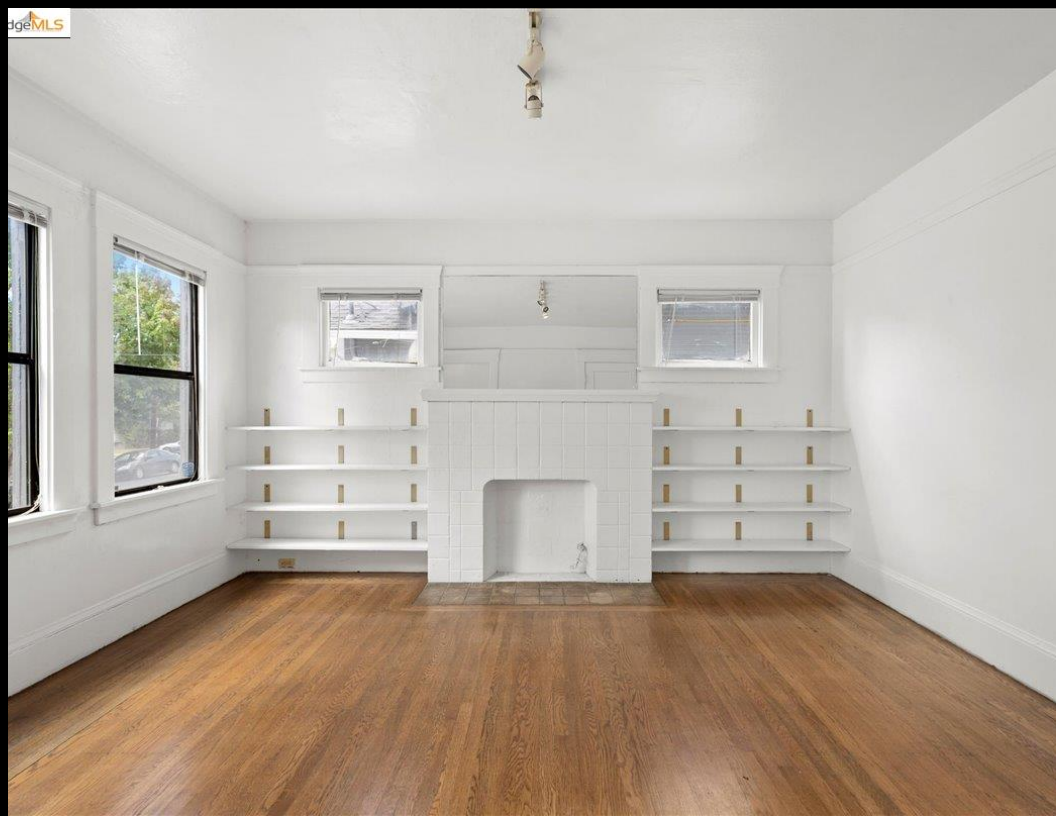
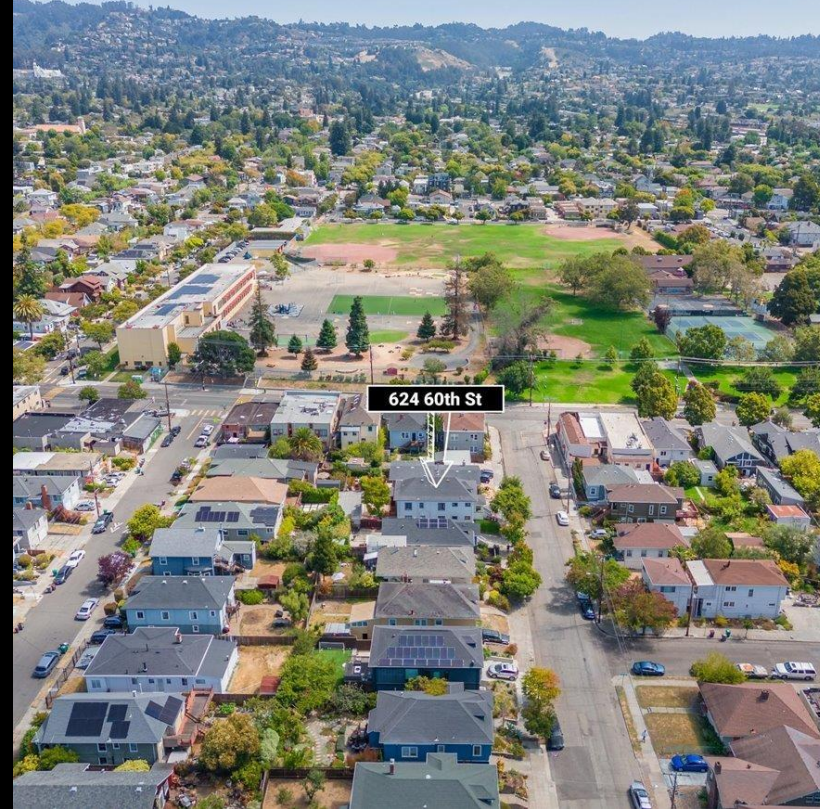


Bushrod

624 60th St

JUST LISTED

COMPASS





Duplex 2326 SF \$1,325,000

## 624 60th St

624 60th St, hosts an expansive 2,326 sq. ft. building situated on a 3,620 sq. ft. lot, presenting an enticing prospect for a new homeowner looking for a stable investment and a wonderful place to live. The duplex features two thoughtfully laid-out units located directly next to Bushrod Park. The bottom floor unit is any new homeowner's dream, with over 1,000 sq. ft. of potential. It features two bedrooms and a jack and jill bathroom, a dedicated dining room, a living room, and its own laundry room to be delivered vacant, allowing your personal touch. Meanwhile, the upstairs hosts over 1,100 sq. ft. unit with a nearly identical layout and is currently rented for \$3,228 per month, providing a steady income stream that can significantly reduce any owner's mortgage. Both units' wood floors and southern exposures provide the warmth of lovely living spaces. In addition, this building has a large back shed with over 500 sq. ft. of secured space, allowing an owner-occupier to use this for their own personal use or rent it out for even more additional income.



**Status:** New

**Compass Type:** Multi-Family

**MLS Type:** RESIDENTIAL INCOME / DUPLEX

**Year Built:** 1908

**Lot Size:** 0.08 AC / 3,620 SF

**County:** Alameda County



### Amenities:

Fresh paint!

New Back stair Case

Large shed in the back

One unit is delivered vacant!



**Willem Bos**

DRE# 02013980

Realtor®

M: 916.698.9954

[willem.m.bos@compass.com](mailto:willem.m.bos@compass.com)