

**109 - 111 South Orange Avenue, South Orange NJ**

**SHANE WIERKS**  
swierks@jefferyrealty.com  
C: 908.581.7781  
O: 908.668.9600 EXT. 223

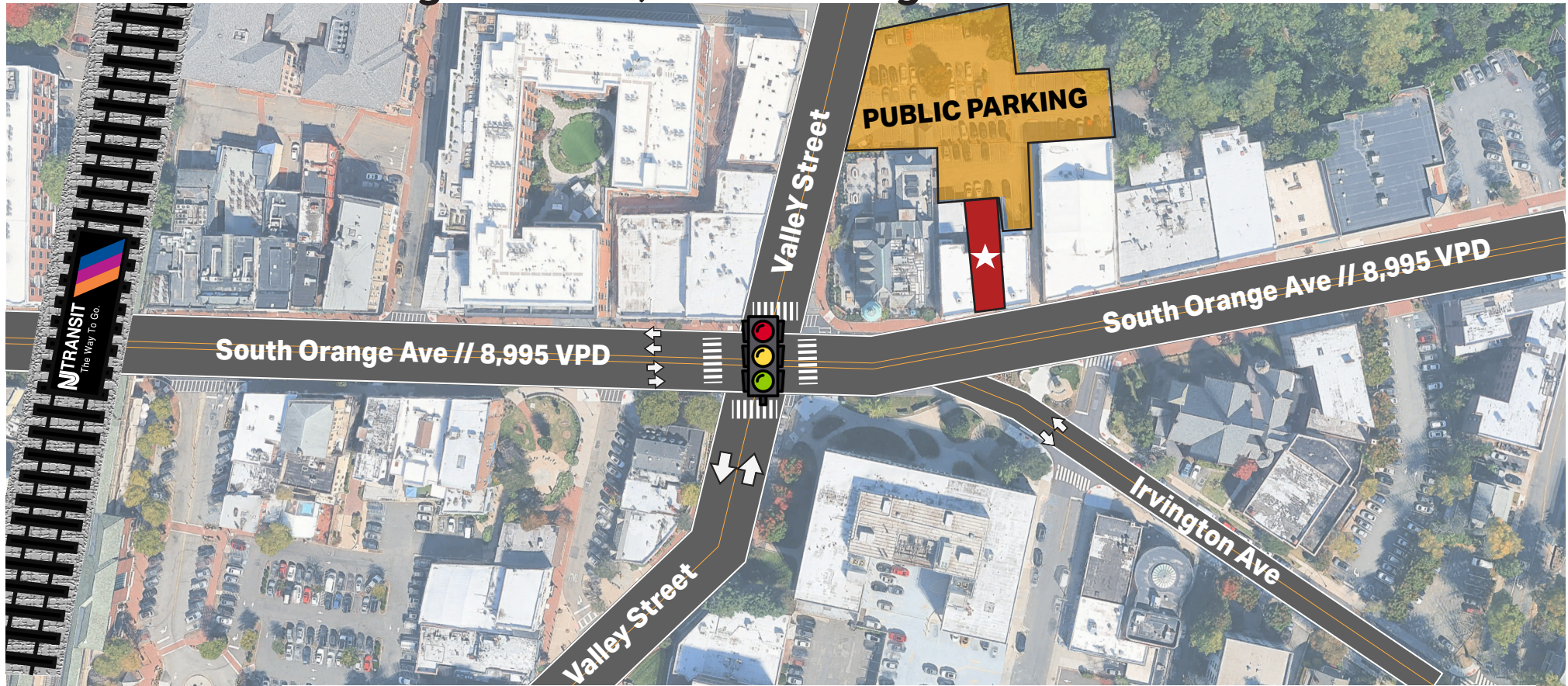
**For Lease | 2,346 SF** w/ Full Usable Basement

**For Lease | 520 SF / 565 SF / 700 SF** 3rd Floor Units



# For Lease | 2,346 SF w/ Full Usable Basement 109 - 111 South Orange Avenue, South Orange NJ

 **SITE INFORMATION**



## AVAILABLE

2346 SF w/ Full Usable Basement  
520 SF / 565 SF / 700 SF 3rd Floor Units

## PRICE

Call for Quote

## TAXES

\$86,196.70  
Tenant Shall Pay 25% Of  
Property Taxes And Insurance

## PARKING

- Street Parking
- Public Parking Lot

## FRONTAGE

75" On South Orange Ave

## NOTES

- Downtown South Orange
- 1 Block from South Orange Station

## TRAFFIC

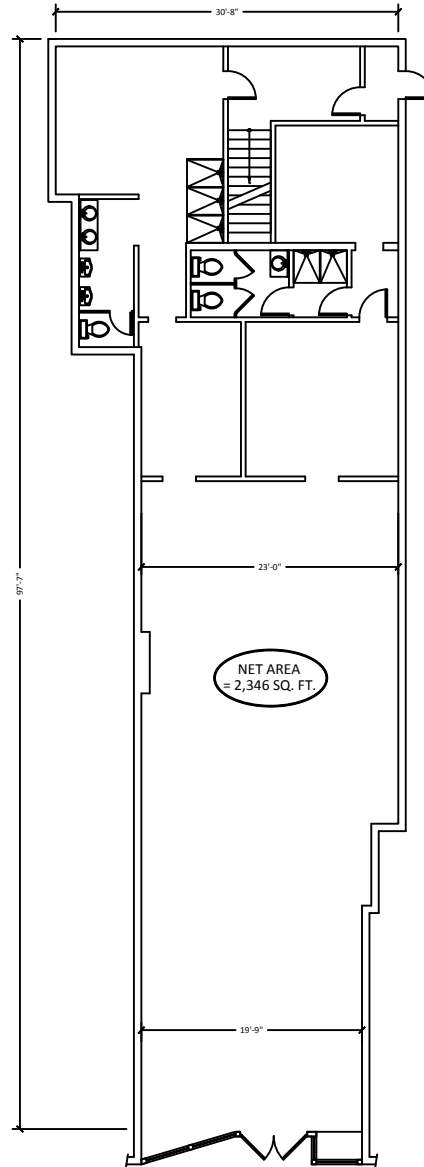
730 VPD On Village Plaza  
8,995 On Route 510  
9,381 On Valley St.

## NEIGHBORING RETAIL



**For Lease | 2,346 SF w/ Full Usable Basement**  
**109 South Orange Avenue, South Orange NJ**

**FLOOR PLAN**



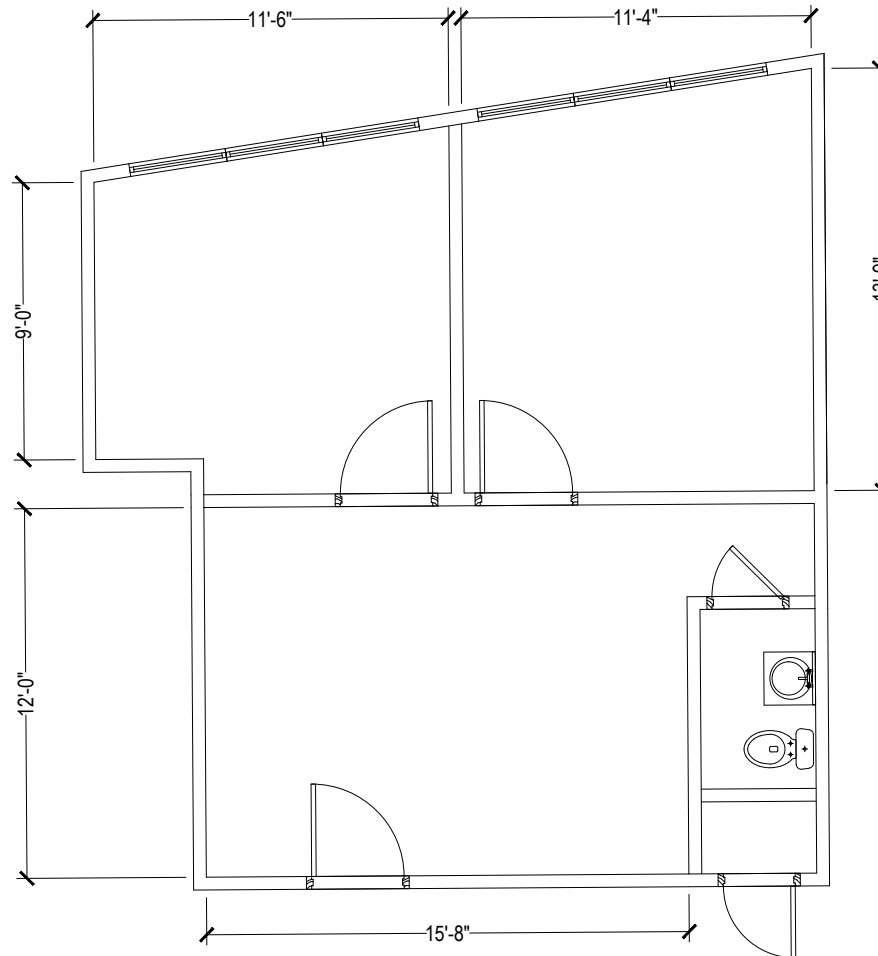
**109 South Orange Avenue**  
**South Orange, NJ**



**For Lease | 520 SF**

**111 South Orange Avenue, South Orange NJ**

**FLOOR PLAN**



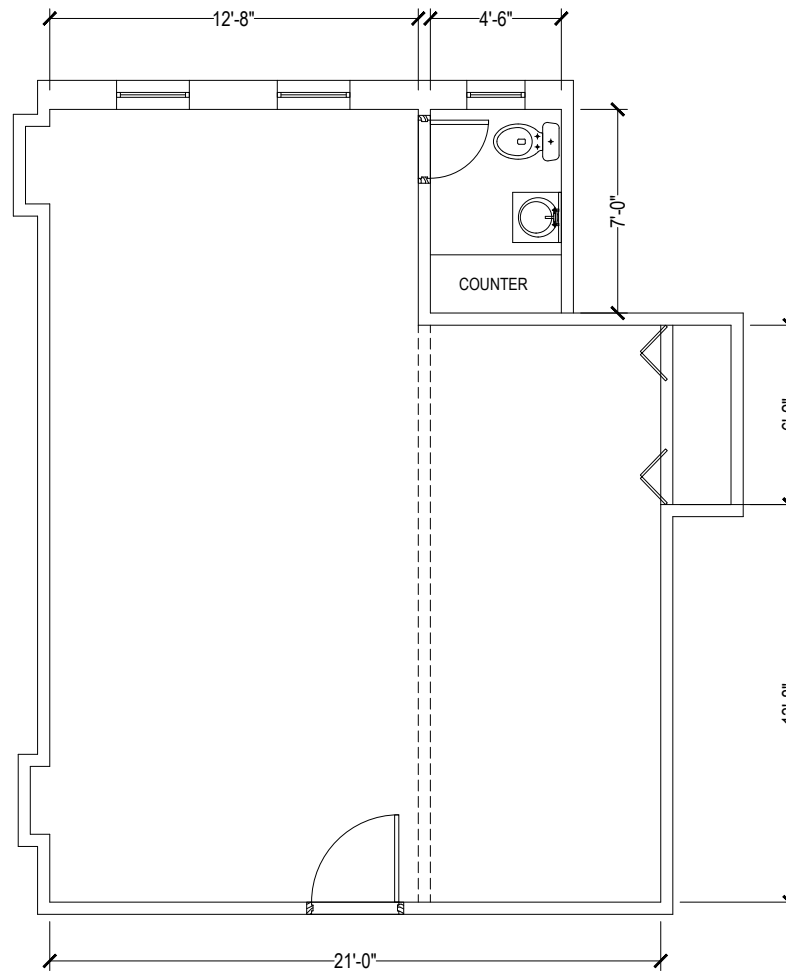
**SUITE #34**

SCALE 1/4" = 1'-0"

**For Lease | 565 SF**

**111 South Orange Avenue, South Orange NJ**

**FLOOR PLAN**

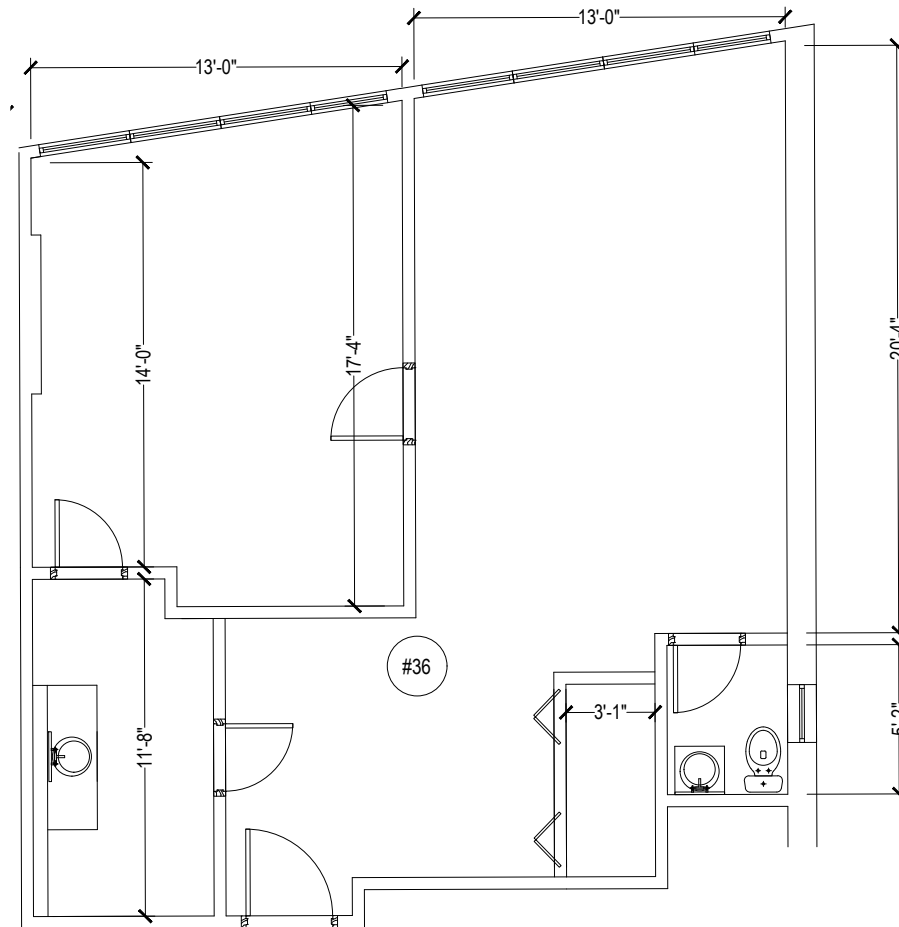


**SUITE #35**

SCALE 1/4" = 1'-0"

**For Lease | 700 SF**

**111 South Orange Avenue, South Orange NJ**



**SUITE #36**


SCALE 1/4" = 1'-0"



# 109 - 111 South Orange Avenue, South Orange NJ



## **DEMOGRAPHICS**

	TOTAL POPULATION	AVERAGE HHI	HOUSEHOLDS	TOTAL BUSINESSES	TOTAL EMPLOYEES
<b>1 Mile</b>	28,448	\$206,814	10,033	984	7,521
<b>3 Miles</b>	296,832	\$128,576	109,187	9,536	70,195
<b>5 Miles</b>	706,399	\$128,197	259,683	25,619	230,925

