



HEAVY POWER WAREHOUSE

2250 SOUTH 850 WEST, WOODS CROSS, UT 84087

LEASE RATE: ~~\$0.92~~ \$0.82 PSF NNN
PURCHASE: SEE AGENT FOR DETAILS



PROPERTY INFORMATION

- ✓ 27,840 SF Warehouse Available
- ✓ NNN'S: \$0.13 Per Month
- ✓ Lease With An Option To Purchase Available
- ✓ (2) Large Restrooms
- ✓ 3 Phase Power- 600 Amps
- ✓ Fully Temperature Controlled
- ✓ (2) Ground Level Doors
- ✓ Great Natural Light with Skylights Throughout
- ✓ Turf Already Installed
- ✓ Clear height: 17'-25'
- ✓ Easy Access to I-15 and Hwy 89

CONTACT US

DEREK KLOPFER

✉ derek@cresutah.com

☎ 801.897.9264

COLTER SMTIH

✉ colter@cresutah.com

☎ 801.755.8794 🌐 www.cresutah.com

TRAVEL TIMES

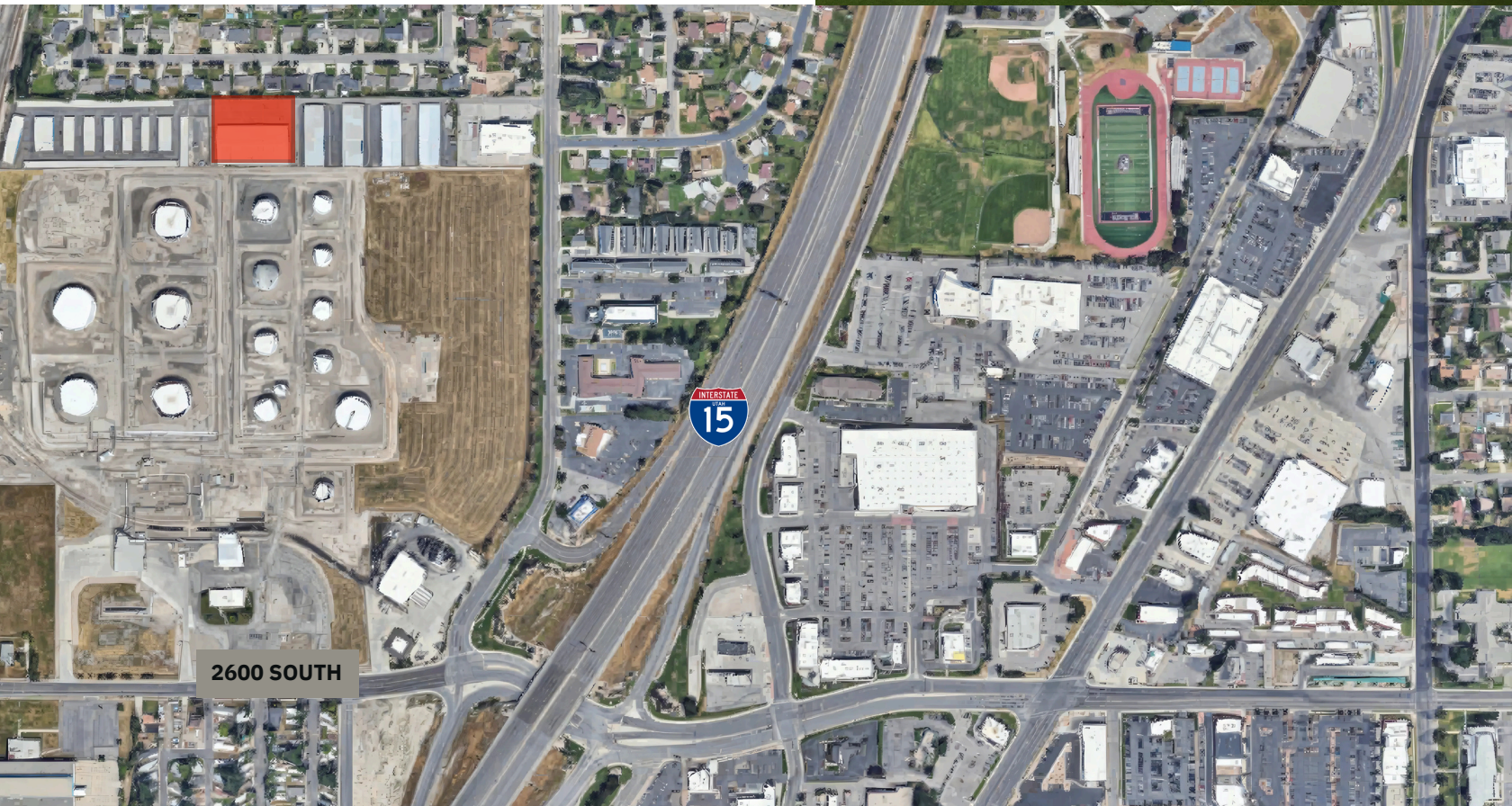
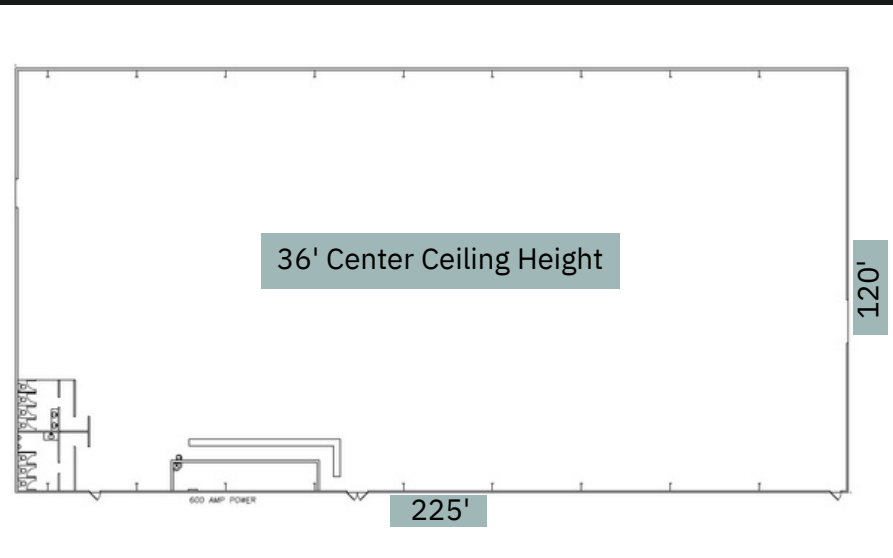
🛣️	I-15 ENTRANCE	2 MINS
🏠	DOWNTOWN SALT LAKE	15 MINS
✈️	SALT LAKE INTERNATIONAL AIRPORT	15 MINS
🎓	UNIVERSITY OF UTAH	20 MINS
🚚	INLAND PORT	15 MINS

Call Us 📞
801.876.6070



HEAVY POWER WAREHOUSE

2250 SOUTH 850 WEST, WOODS CROSS, UT 84087



This information is given with the understanding that all negotiations and/or real estate activity related to the property described above shall be conducted through this CRES office. The above information while not guaranteed, was obtained from sources we believe to be reliable.

CONTACT US

DEREK KLOPFER

✉ derek@cresutah.com ☎ 801.897.9264

COLTER SMTIH

✉ colter@cresutah.com ☎ 801.755.8794 🌐 www.cresutah.com

Call Us
801.876.6070 📞