

# RETAIL SPACE FOR LEASE

KROGER ANCHORED SHOPPING CENTER

5934 ZEBULON ROAD  
MACON, GA 31210  
BIBB COUNTY

±1,800 SF

LEASE RATE:  
\$22.00/SF, NNN

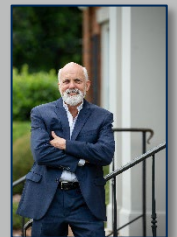


ADAM BAILEY C: 478.733.7961 | STERLING BAILEY C: 478.951.9443  
[ABAILEY@THESUMMITGROUPMACON.COM](mailto:ABAILEY@THESUMMITGROUPMACON.COM) | [SBAILEY@THESUMMITGROUPMACON.COM](mailto:SBAILEY@THESUMMITGROUPMACON.COM)

4124 ARKWRIGHT ROAD, SUITE 1, MACON, GA 31210

O: 478.750.7507

WWW.THESUMMITGROUPMACON.COM



## PROPERTY INFORMATION

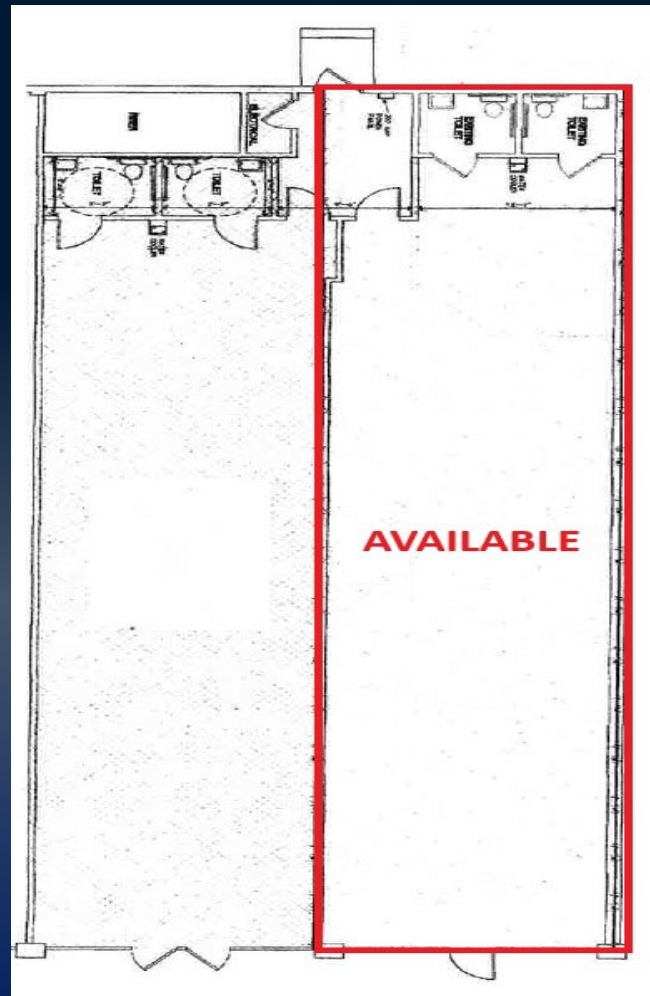
- Former Yogurt Shop
- Conveniently located near I-475
- Neighboring stores include:
  - Kroger
  - Lowe's
  - Amstar Cinemas
  - Walmart
  - Chick-fil-A
  - Fajitas
  - Nu-Way
  - Truist Bank
  - Cadence Bank
  - State Farm
- Traffic Counts (GDOT 2023):
  - Zebulon Road - 28,000 VPD
  - I-475 - 57,300 VPD



**5934 ZEBULON ROAD**  
**MACON, GA 31210**  
**BIBB COUNTY**



FLOOR PLAN



5934 ZEBULON ROAD  
MACON, GA 31210  
BIBB COUNTY



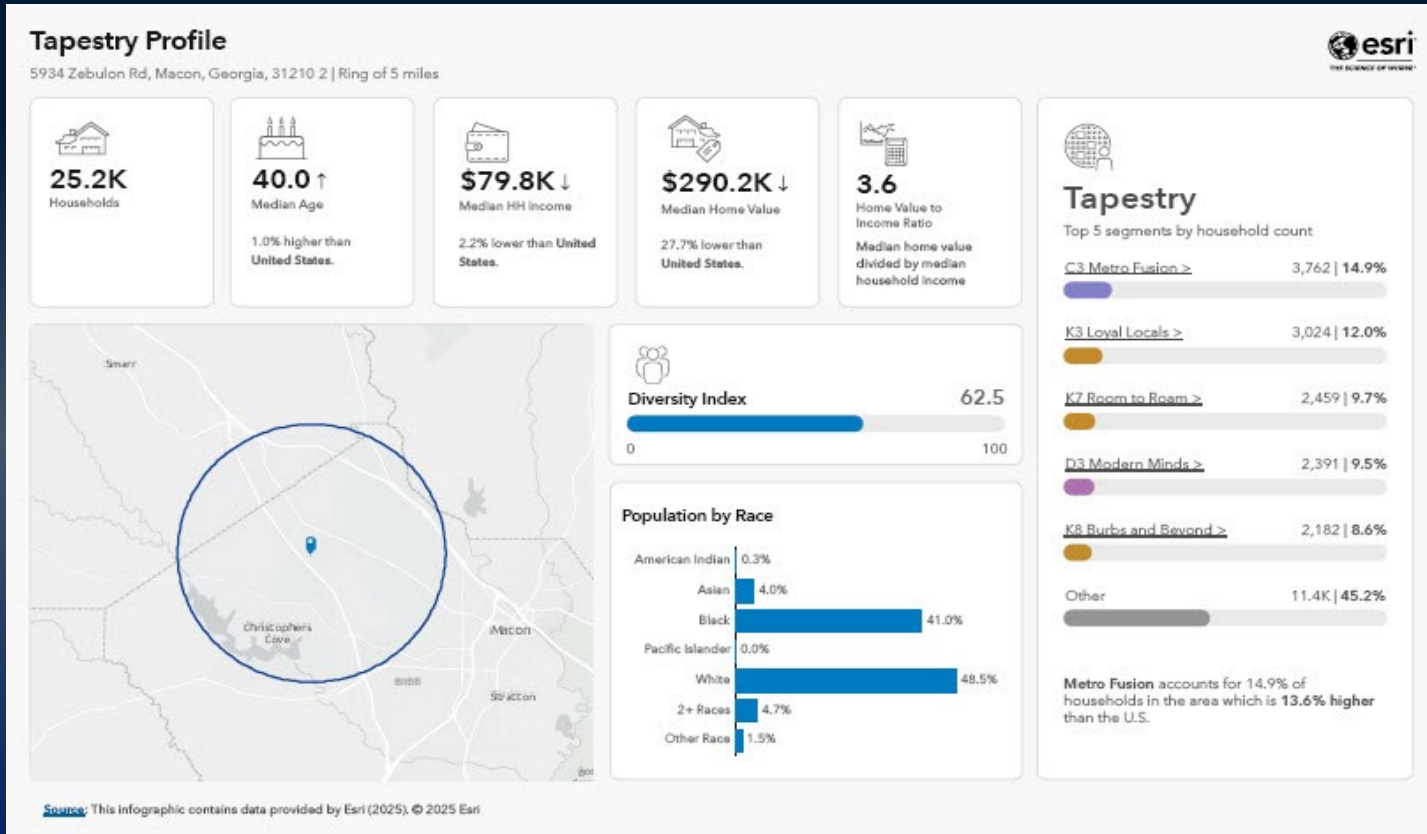
AERIAL



5934 ZEBULON ROAD  
MACON, GA 31210  
BIBB COUNTY



# DEMOGRAPHICS



5934 ZEBULON ROAD  
MACON, GA 31210  
BIBB COUNTY



## PROPERTY PHOTOS



*The information contained herein has been compiled from various sources, both private and public. It is accurate and complete only to the extent to which The Summit Group has been able to ascertain from third party sources. As such, no warranty or guarantee is given or implied with regard to the accuracy or completeness of any information contained herein. Any interested party shall be required to conduct its own due diligence and investigations to verify, review, audit, or otherwise insure the information contained herein.*

