



NAVIGATE REALTY GROUP

kw KELLERWILLIAMS REALTY SONORAN LIVING



1915 E. CHANDLER BLVD. CHANDLER, AZ 85225 UNIT 3 AND 4

FOR LEASE
NNN \$33.50/SF/YR

\$4,070.25/MO + NNN (UNIT 3 - 1,458 SF)
\$3,964.17/MO + NNN (UNIT 4 - 1,420 SF)

PROPERTY OVERVIEW

Discover two stunning, move-in ready medical suites with elegant, high-end finishes, including luxurious marble floors. Each suite is thoughtfully designed for optimal functionality and comfort, ready to elevate any medical or professional practice.

Unit 3 spans 1,458 SF and offers a welcoming reception and waiting area, four private offices, a spacious conference room, a dedicated assistant work area, a modern kitchen, and two ADA-compliant bathrooms. The monthly rent is \$4,070.25 plus NNN. **Unit 4** covers 1,420 SF and features a large, versatile treatment and conference room, four treatment rooms, a private office, a fully equipped lab, an ADA-compliant restroom, and a storage room. The monthly rent is \$3,964.17 plus NNN.

Both suites provide an exceptional environment designed to meet the needs of your business.



JON HAMMOND, CCIM

Director | License: SA555889000, Arizona

(480) 283-3740

jhammond@kwcommercial.com

ANDREW RICHWINE

Associate

(602) 303-6237

andrewrichwine@kwcommercial.com

2121 W Chandler Blvd Suite 112,

Chandler, AZ 85224

(480) 716-4545

www.az-commercialrealestate.com





NAVIGATE REALTY GROUP

kw KELLERWILLIAMS REALTY SONORAN LIVING



PROPERTY DETAILS

Property Address	1915 E. CHANDLER BLVD.
City, State, Zip	CHANDLER, AZ 85225
Available Spaces	Unit 3 and 4 (can be leased together or separately)
NNN	NNN \$5.75/SF/YR
Unit 3 Lease Price	\$4,070.25/mo + NNN
Unit 4 Lease Price	\$3,964.16/mo + NNN
Unit 3 Square Footage (SF)	1,458 SF
Unit 4 Square Footage (SF)	1,420 SF
Lease Price	\$33.50/sf/yr
Property Type	Med Office
Year Built	2000
Zoning	C2

JON HAMMOND, CCIM
 Director | License: SA555889000, Arizona
 (480) 283-3740
 jhammond@kwcommercial.com

ANDREW RICHWINE
 Associate
 (602) 303-6237
 andrewrichwine@kwcommercial.com

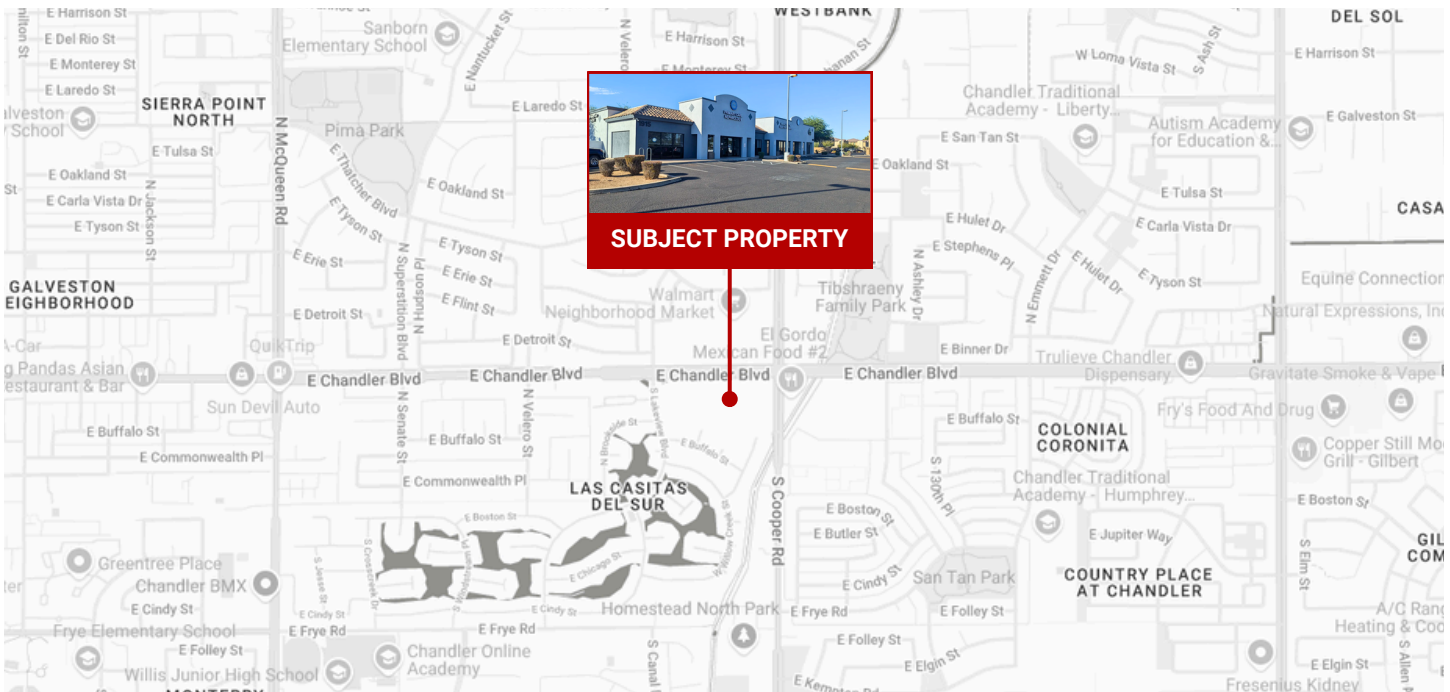
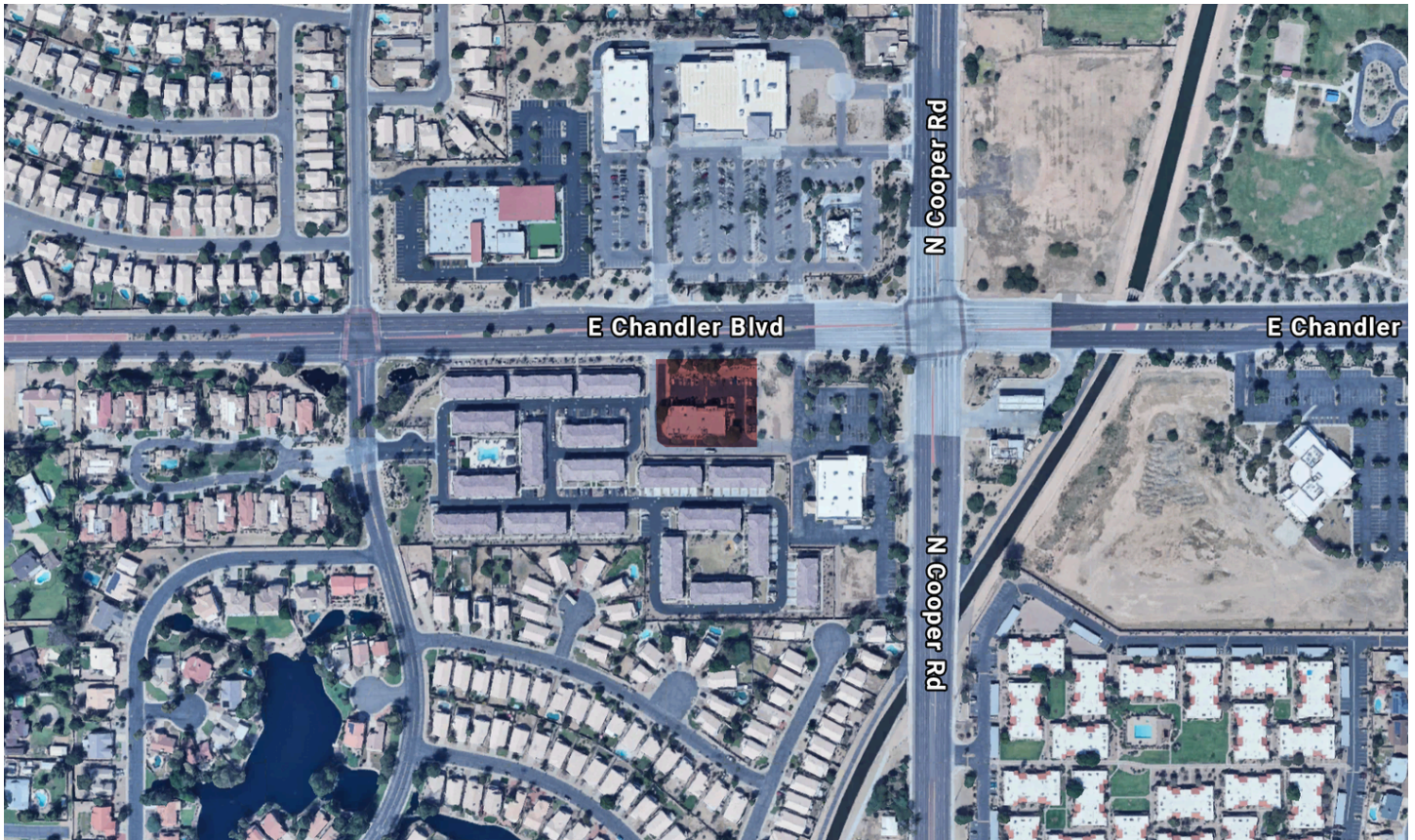
2121 W Chandler Blvd Suite 112,
 Chandler, AZ 85224
 (480) 716-4545
 www.az-commercialrealestate.com





NAVIGATE REALTY GROUP

KW KELLERWILLIAMS REALTY SONORAN LIVING



JON HAMMOND, CCIM

Director | License: SA555889000, Arizona

(480) 283-3740

hammond@kwcommercial.com

ANDREW RICHWINE

Associate

(602) 303-6237

andrewrichwine@kwcommercial.com

2121 W Chandler Blvd Suite 112,

Chandler, AZ 85224

(480) 716-4545

www.az-commercialrealstate.com





DEMOGRAPHIC SUMMARY REPORT

RADIUS	2 MILES	5 MILES	10 MILES
POPULATION			
2020 POPULATION	59,850	326,525	1,043,589
2024 POPULATION	58,374	331,318	1,062,033
2029 POPULATION PROJECTION	62,639	358,009	1,148,841
ANNUAL GROWTH 2020-2024	-0.6%	0.4%	0.4%
ANNUAL GROWTH 2024-2029	1.5%	1.6%	1.6%
MEDIAN AGE	36.7	36.5	36.8
BACHELOR'S DEGREE OR HIGHER	35%	42%	37%
U.S. ARMED FORCES	18	90	376

JON HAMMOND, CCIM

Director | License: SA555889000, Arizona

(480) 283-3740

jhammond@kwcommercial.com

ANDREW RICHWINE

Associate

(602) 303-6237

andrewrichwine@kwcommercial.com

2121 W Chandler Blvd Suite 112,

Chandler, AZ 85224

(480) 716-4545

www.az-commercialrealestate.com

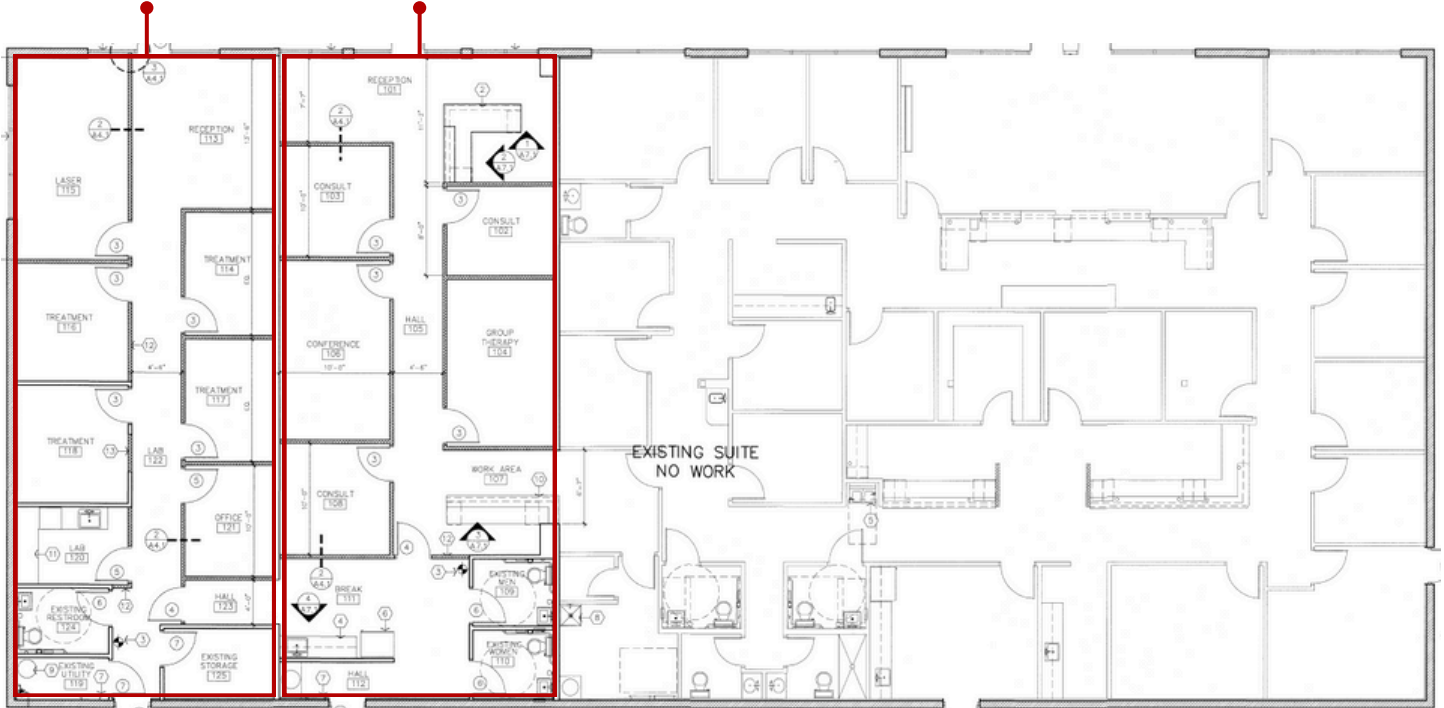




FLOOR PLAN

UNIT 4

UNIT 3



JON HAMMOND, CCIM

Director | License: SA555889000, Arizona

(480) 283-3740

ghammond@kwcommercial.com

ANDREW RICHWINE

Associate

(602) 303-6237

andrewrichwine@kwcommercial.com

2121 W Chandler Blvd Suite 112,

Chandler, AZ 85224

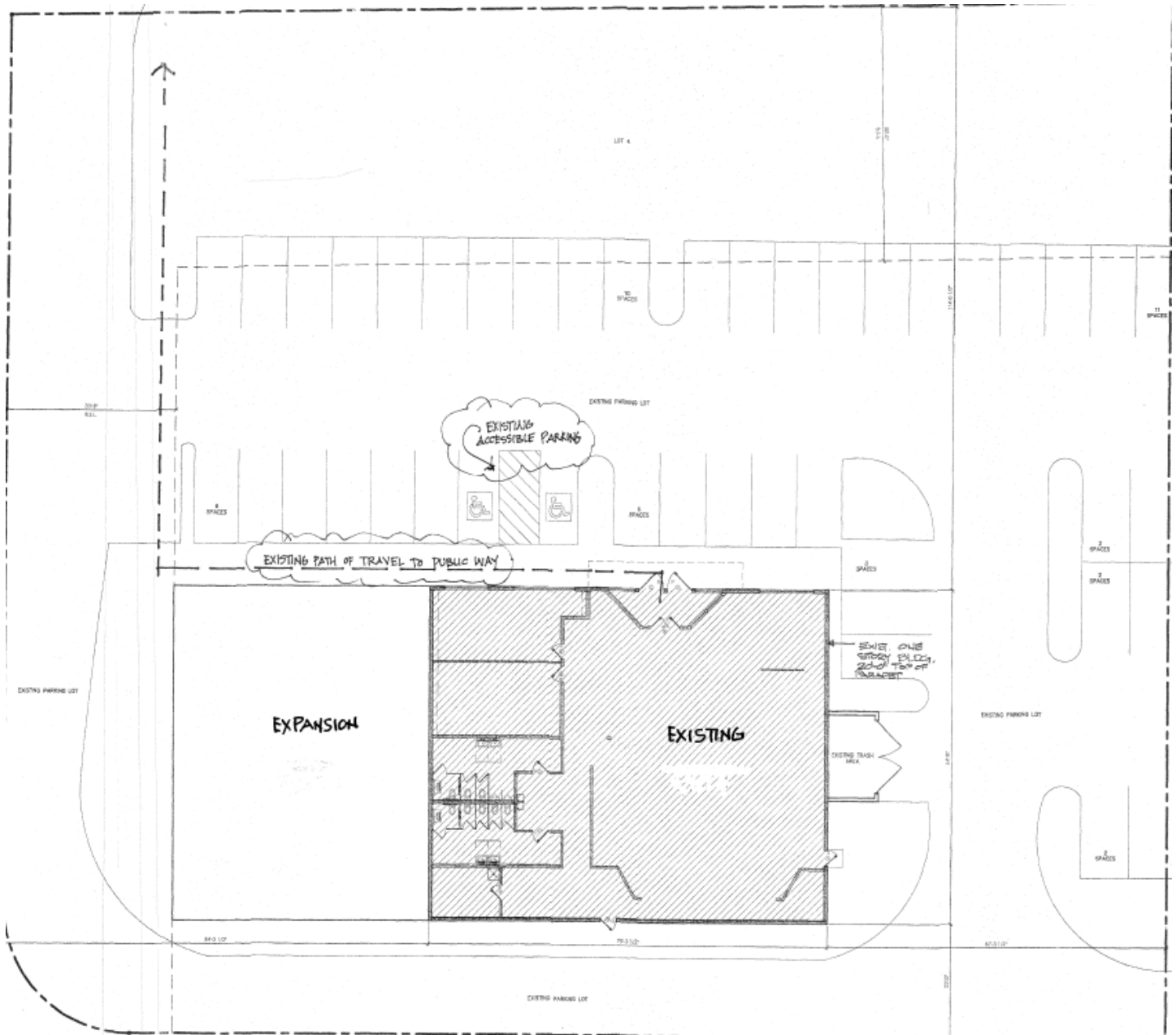
(480) 716-4545

www.az-commercialrealestate.com





SITE PLAN



JON HAMMOND, CCIM

Director | License: SA555889000, Arizona

(480) 283-3740

jhammond@kwcommercial.com

ANDREW RICHWINE

Associate

(602) 303-6237

andrewrichwine@kwcommercial.com

2121 W Chandler Blvd Suite 112,

Chandler, AZ 85224

(480) 716-4545

www.az-commercialrealestate.com

