

FOR SALE/LEASE

Brand-New Retail Opportunity
Located in Arbutus Ridge



2892 Arbutus Street
Vancouver, BC

Adrian Beruschi
Personal Real Estate Corporation

Senior Vice President, Retail
604 662 5138
adrian.beruschi@cbre.com

Chloe Hamelin

Associate, Retail
604 662 5166
chloe.hamelin@cbre.com

CBRE



OPPORTUNITY OVERVIEW

Presenting an exciting opportunity to acquire or lease a brand-new strata retail unit in an exceptional westside neighborhood. 2892 Arbutus Street is comprised of 3,383 SF of leasable area, on the ground floor of The Arbutus, a newly built four-storey, mixed-use residential development with 20 luxury condominiums.

Prominently located on the corner of Arbutus and West 13th Avenue, along the Arbutus Greenway, and just three blocks from the future Broadway & Arbutus SkyTrain Station, this retail property benefits from high vehicular exposure and close proximity to future Transit.

FEATURES



High profile retail investment located along the coveted Arbutus Commercial Corridor on Vancouver’s west side



Exceptional frontage, providing exposure to over 23,000 daily traffic volumes



Surrounded by a vibrant amenity base



5-minute walk to the future Arbutus SkyTrain Station on Broadway Extension Line

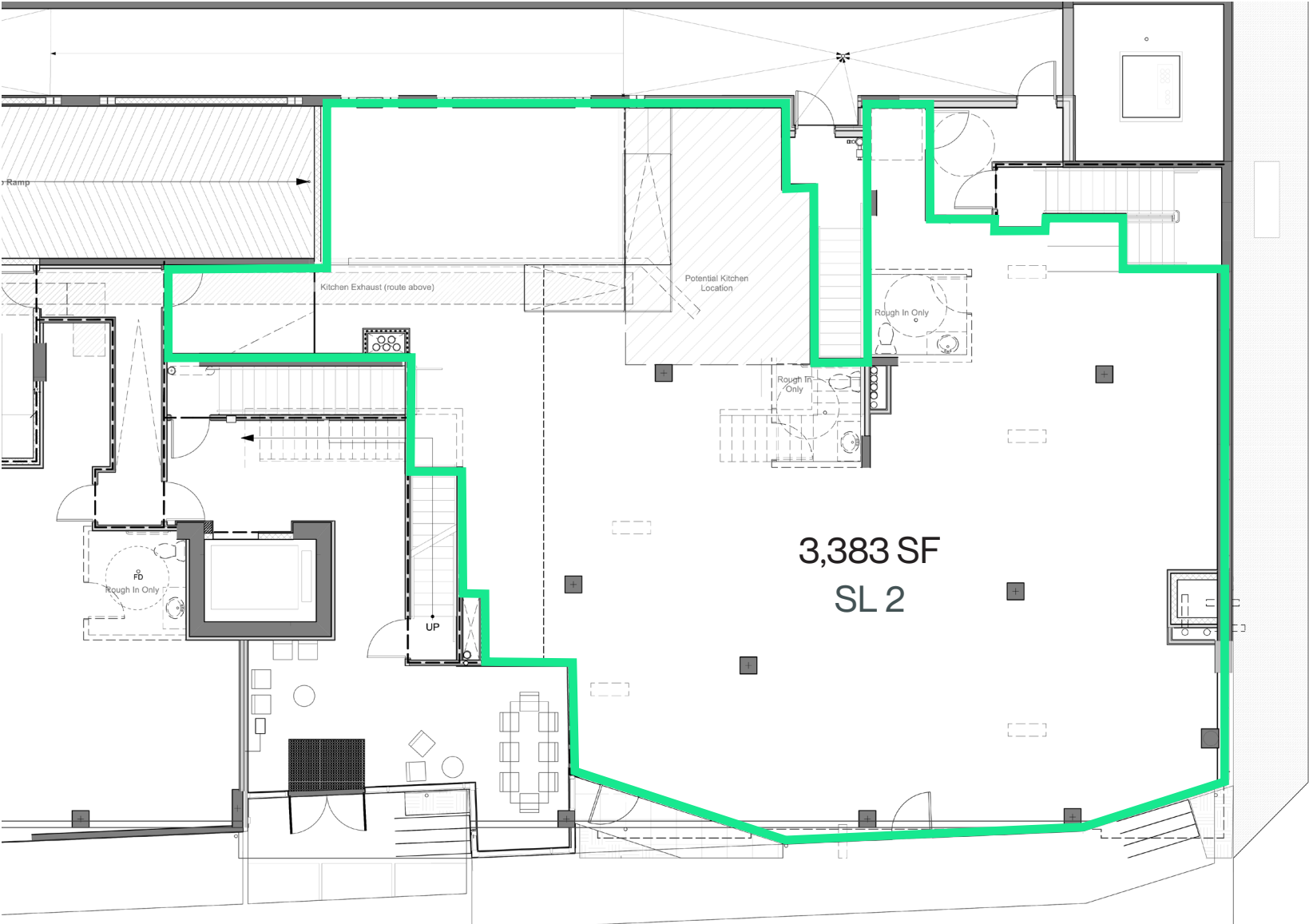
UNIT DETAILS

ADDRESS	2892 Arbutus Street, Vancouver, BC
SL #	2
AREA	3,383 SF*
ZONING	C-2C1 Commercial
STRATA FEES	\$3,056.89 per month
PARKING	2 shared stalls
ADDITIONAL RENT	Contact listing agent
ASKING NET RENT	\$62.00 PSF
ASKING PRICE	\$5,999,000

* Exact size is subject to verification.

FLOOR PLAN

Not to scale. Subject to verification.





LOCATION

Nestled at the southeast edge of Kitsilano, 2892 Arbutus Street offers a rare blend of urban convenience and natural charm. The development sits directly along the Arbutus Greenway, a scenic pedestrian and cycling route that connects residents to nearby parks, beaches, and local amenities. The surrounding neighbourhood is home to a variety of schools, homes, cafes, community spaces, and grocers, creating a vibrant walkable neighbourhood in Vancouver’s West Side.

The Subject Property is just 400m from the future Broadway Extension Arbutus station, as well as several transit lines along West Broadway, providing easy access to Downtown Vancouver and surrounding areas of the city.



NEIGHBOURHOOD TENANTS

- | | | | |
|-----------------------|----------------------|----------------------------|-------------------------|
| + Loblaws City Market | + Coquette Brasserie | + Rummage Community Thrift | + Body Energy Club |
| + Dunbar Lumbar | + Plaisir Sucre | + BC Liquor | + Temaki Sushi |
| + Tisol Pet Store | + Subway | + Pallet Coffee Roasters | + IGA |
| + Pete’s Meat | + Freshslice | + Korna Pet | + London Drugs |
| + Kal Tire | + Cloverdale Paint | + Fitness World | + Sweet Barrel Creamery |



FOR SALE/LEASE

2892 Arbutus Street
Vancouver, BC



CONTACT US

Adrian Beruschi
Personal Real Estate Corporation

Senior Vice President, Retail
604 662 5138
adrian.beruschi@cbre.com

Chloe Hamelin

Associate, Retail
604 662 5166
chloe.hamelin@cbre.com

This disclaimer shall apply to CBRE Limited, Real Estate Brokerage, and to all other divisions of the Corporation; to include all employees and independent contractors ("CBRE"). All references to CBRE Limited herein shall be deemed to include CBRE, Inc. The information set out herein, including, without limitation, any projections, images, opinions, assumptions and estimates obtained from third parties (the "Information") has not been verified by CBRE, and CBRE does not represent, warrant or guarantee the accuracy, correctness and completeness of the Information. CBRE does not accept or assume any responsibility or liability, direct or consequential, for the Information or the recipient's reliance upon the Information. The recipient of the Information should take such steps as the recipient may deem necessary to verify the Information prior to placing any reliance upon the Information. The Information may change and any property described in the Information may be withdrawn from the market at any time without notice or obligation to the recipient from CBRE. CBRE and the CBRE logo are the service marks of CBRE Limited and/or its affiliated or related companies in other countries. All other marks displayed on this document are the property of their respective owners. All Rights Reserved.

Mapping Sources: Canadian Mapping Services canadamapping@cbre.com; DMTI Spatial, Environics Analytics, Microsoft Bing, Google Earth.

CBRE Limited | 1021 West Hastings Street | Suite 2500 | Vancouver, BC | V6E 0C3
www.cbre.ca

CBRE