

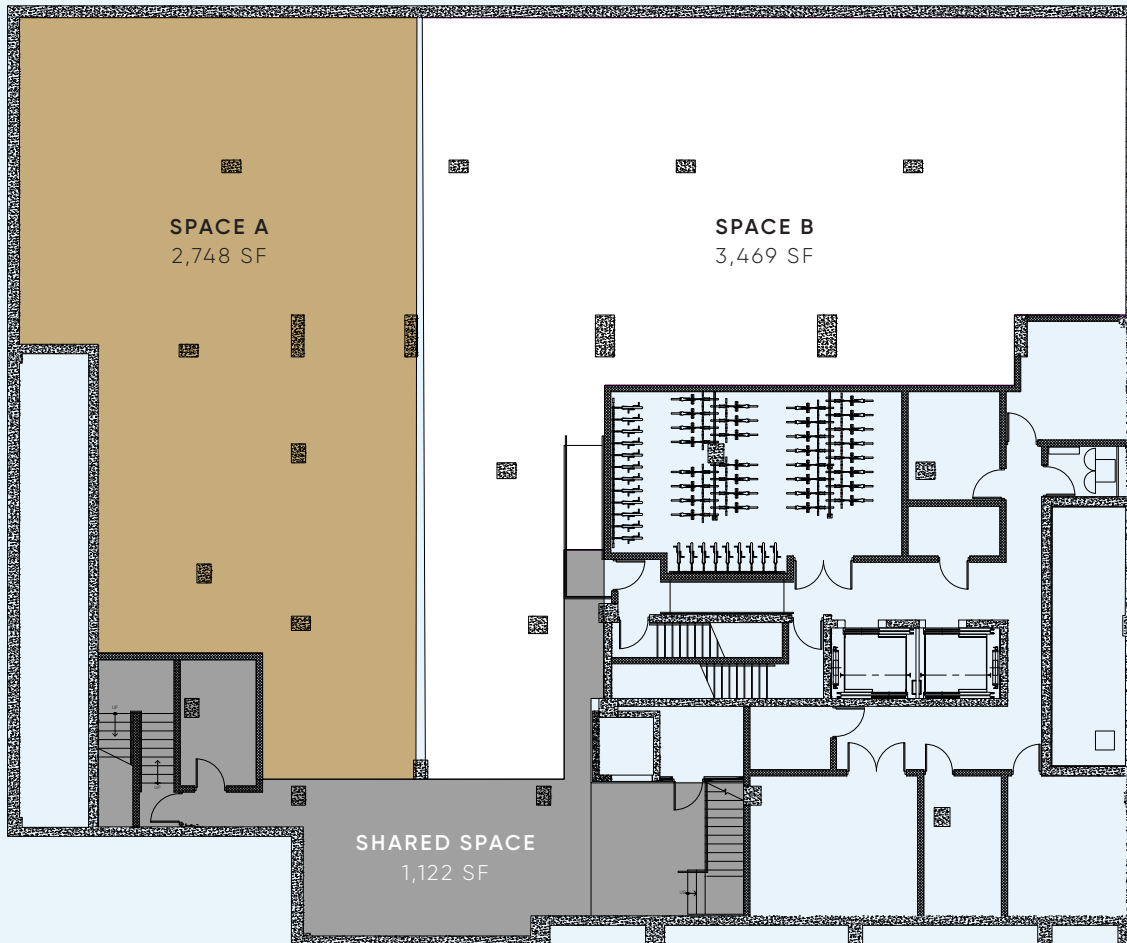


150

SOUTH
PORTLAND
AVENUE

2,500–7,300 SF
COMMUNITY FACILITY
FOR LEASE IN
DOWNTOWN BROOKLYN

POSSIBLE DIVISIONS



- Lower level approximately 7,300 SF
- Ground floor entrance with full glass frontage
- Elevator and sprinkler in place
- No real estate taxes passed through to tenant
- Located three blocks from Atlantic Terminal Station/Barclays
- Community facility users needed

For more information or to arrange a tour, please contact:

Mitzi Flexer
212 593 7124 | mflexer@bradfordallen.com

Denver Tveter
212 593 7109 | dtveter@bradfordallen.com

exclusively leased by
BA BRADFORD
ALLEN

LOCATION

The project is a short walk from the Atlantic Avenue-Barclay Center subway station to the west, serviced by the 2, 3, 4, 5, B, D, N, Q, and R trains, along with the LIRR Atlantic Terminal. Also nearby to the north are the G train at the Fulton Street station and the C train at the Lafayette Avenue station.

AREA DEMOGRAPHICS

DAYTIME POPULATION

2,080,000

AVERAGE HOUSEHOLD INCOME

\$128,000

TOTAL WORKFORCE

1,330,000



For more information or to arrange a tour, please contact:

Mitzi Flexer
212 593 7124 | mflexer@bradfordallen.com

Denver Tveter
212 593 7109 | dtveter@bradfordallen.com

exclusively leased by

BA BRADFORD
ALLEN

150

SOUTH
PORTLAND
AVENUE

MITZI FLEXER

212 593 7124

mflexer@bradfordallen.com

DENVER TVETER

212 593 7109

dtveter@bradfordallen.com

bradfordallen.com