

For lease

**\$3/SF Broker Bonus for
MOB deal signed by
December 31, 2024**

390 Waterloo Blvd. | Moser Court | Exton, PA
6,588 SF Medical Office Suites



**390 Waterloo Blvd.
Exton, PA**



Property specifications

- Suite 102 - 1,630 SF
- Suite 200 - 4,958 SF
- \$26.75/SF + Electric
- Plug & play including shielded imaging room
- Signage available
- Located in the heart of Exton right along Route 30

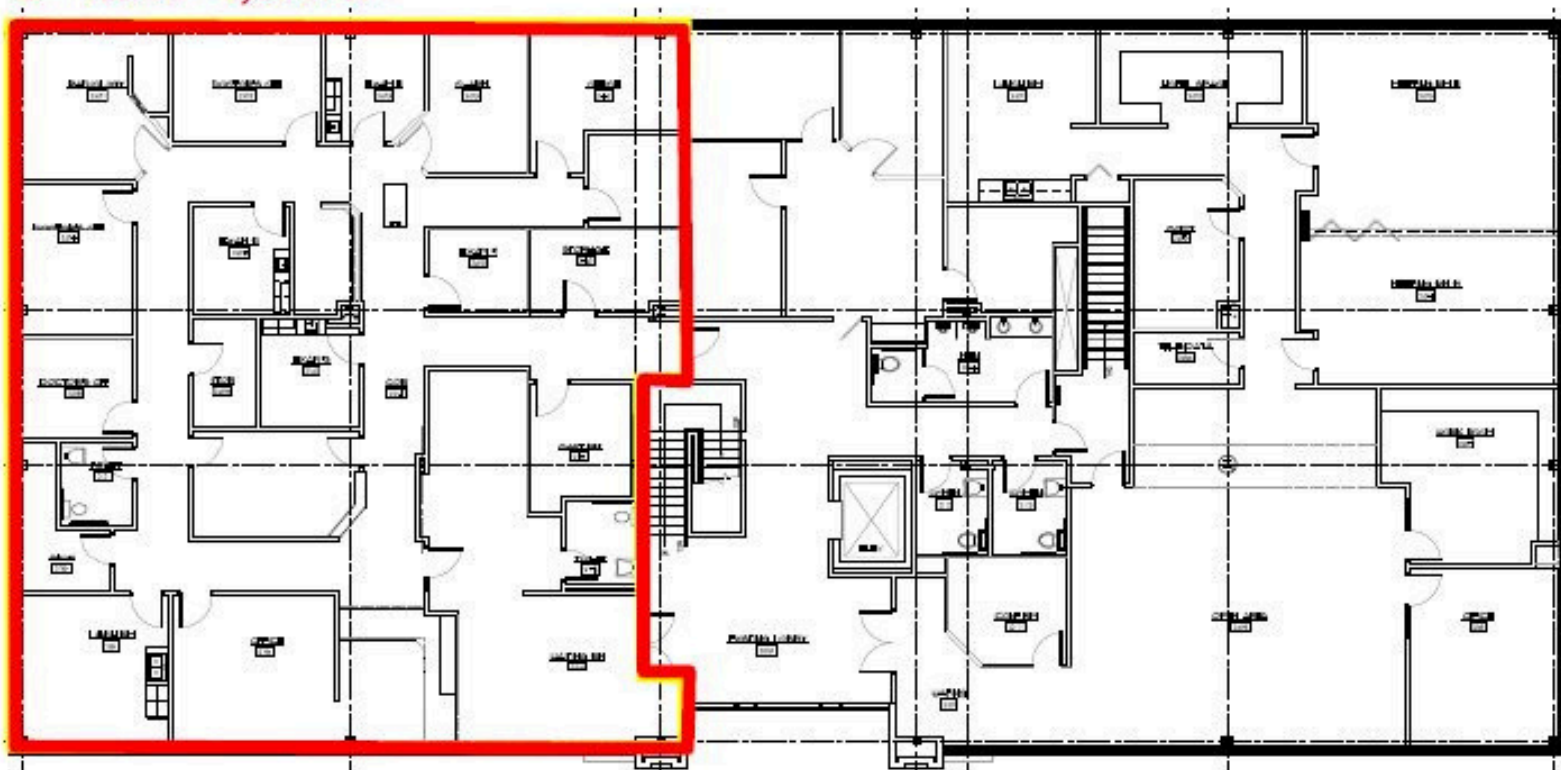
**390 Waterloo Blvd.
Exton, PA**



1st floor - 1,630 SF



2nd floor - 4,958 SF



Scott Williams
Managing Director
scottA.williams@jll.com
+1 610 721 9912

Jones Lang LaSalle Brokerage, Inc.
550 E. Swedesford Road, Suite 260
Wayne, PA 19087
+ 610 249 2255

jll.com

Although information has been obtained from sources deemed reliable, neither Owner nor JLL makes any guarantees, warranties or representations, express or implied, as to the completeness or accuracy as to the information contained herein. Any projections, opinions, assumptions or estimates used are for example only. There may be differences between projected and actual results, and those differences may be material. The Property may be withdrawn without notice. Neither Owner nor JLL accepts any liability for any loss or damage suffered by any party resulting from reliance on this information. If the recipient of this information has signed a confidentiality agreement regarding this matter, this information is subject to the terms of that agreement. ©2024. Jones Lang LaSalle IP, Inc. All rights reserved.