

2,146 SF Industrial/Commercial Building for Lease
\$1.75/SF/Month NNN



925 NW 49th Street
Seattle, WA 98107

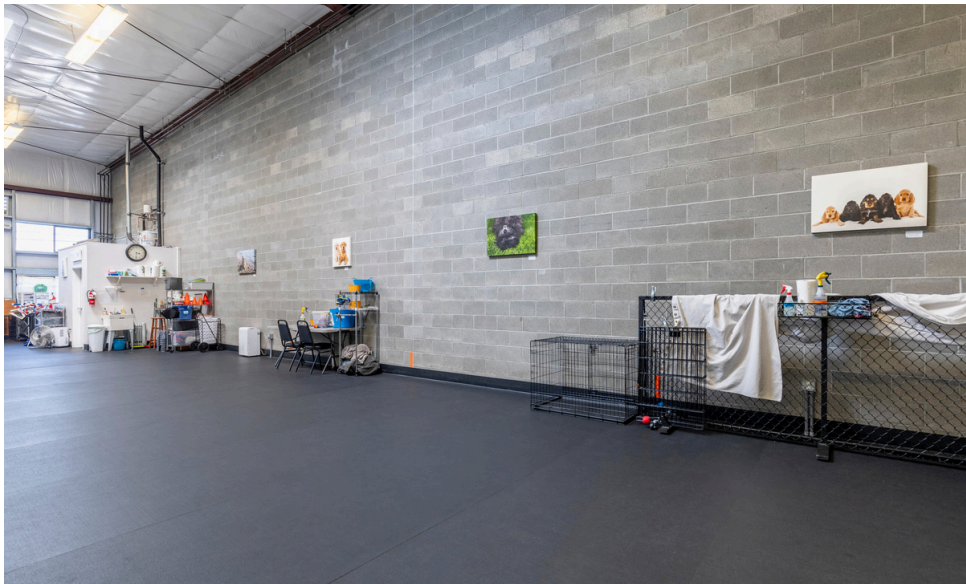
Property Details

Address: 925 NW 49th St, Seattle, WA 98107
Price: \$1.75/SF/Month NNN
Est. NNN: \$4.25/SF/YR
Building Size: 7,363 Square Feet
Suite A Size: 2,146 Square Feet
Lot Size: 10,000 Square Feet
Uncovered Parking: 1+ off-street parking spaces
Year Built: 2011
Zoning: UI U/45
Features: 20 foot ceilings
Clear Span
1 restroom
Floor Drain
W/D Hook-Up
1 Roll-Up Door



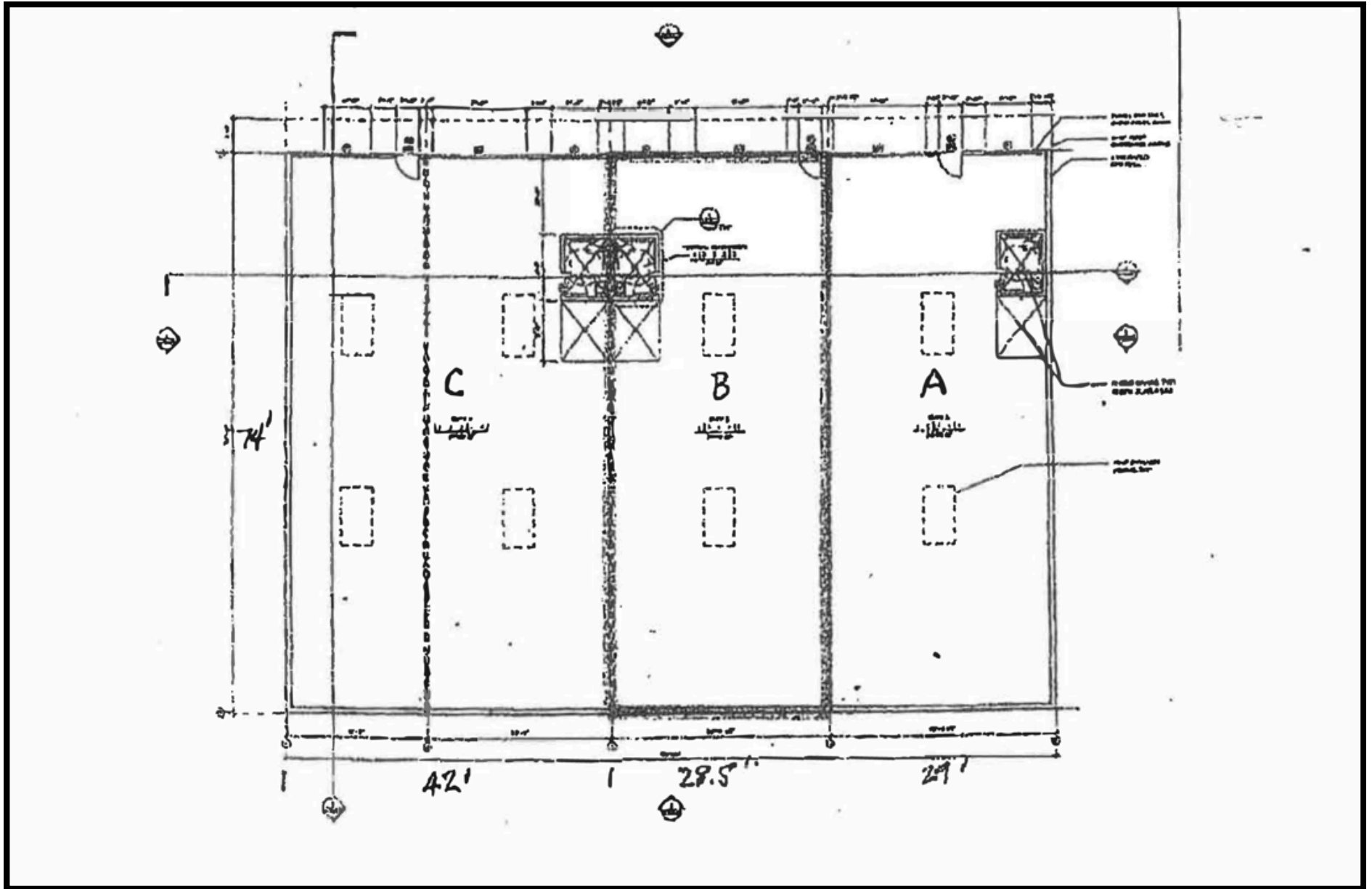
Property Photos

925 NW 49th St, Seattle, WA 98107
Suite A - 2,146 Square Feet



Floor Plan

925 NW 49th St, Seattle, WA 98107





Exclusively Listed By:

Lauren Hendricks

Windermere RE Midtown Commercial

Phone: 206-999-9161

LaurenHendricks@windermere.com

www.CommercialSeattle.com



LAUREN
HENDRICKS
COMMERCIAL REALTOR