



FOR SALE \$1,500,000

562 25TH STREET SOUTH

ST. PETERSBURG, FL 33712



562 25TH STREET SOUTH ST. PETERSBURG, FL 33712

Property Features

Ideal for an artist's studio, flex space, industrial use, veterinary office, brewery, catering, office, labs, printing, greenhouse, plant nursery, or warehousing.

Asking Price: \$1,500,000

Year Built: 1957

Heated Square Feet: 4,500

Site Area: 0.29 Acres

Zone: IT (Industrial Traditional)

Flood Zone: X-Zone (outside of the 100 year flood plain)

Sprinklers: None

Construction: Concrete block, slab on grade

Parking: Plenty of parking in the contiguous, fully fenced yard

Amenities: Located in the highly sought-after Warehouse Arts District

Yard: Fully fenced and gated

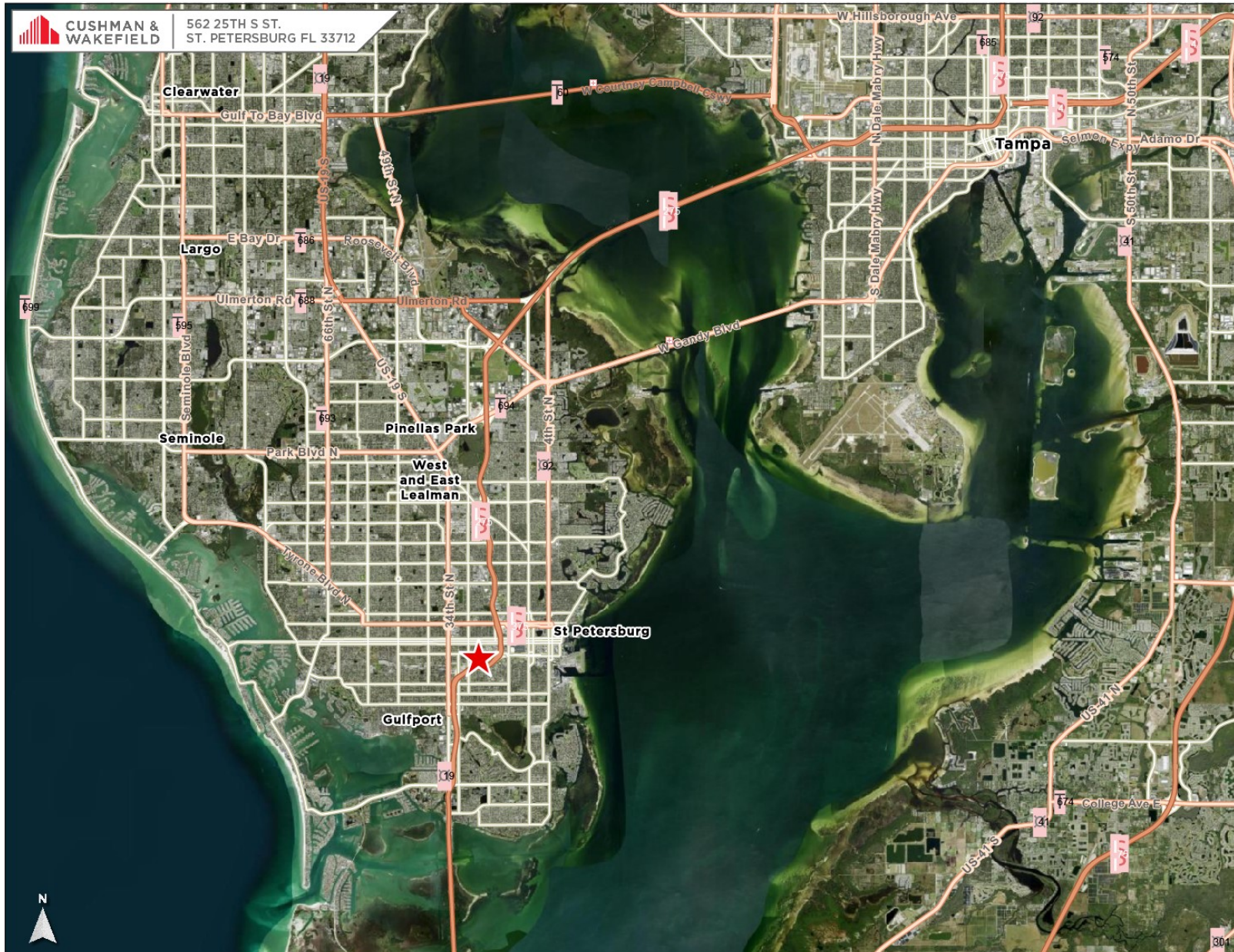
Highlights

Live/work space: 1,000 sq ft studio/office in front (south side) with kitchen and full bath. Connected to two warehouse rooms (north side) totaling 3,500 sq ft with roll-up doors. HVAC throughout (condition unknown).



562 25TH STREET SOUTH

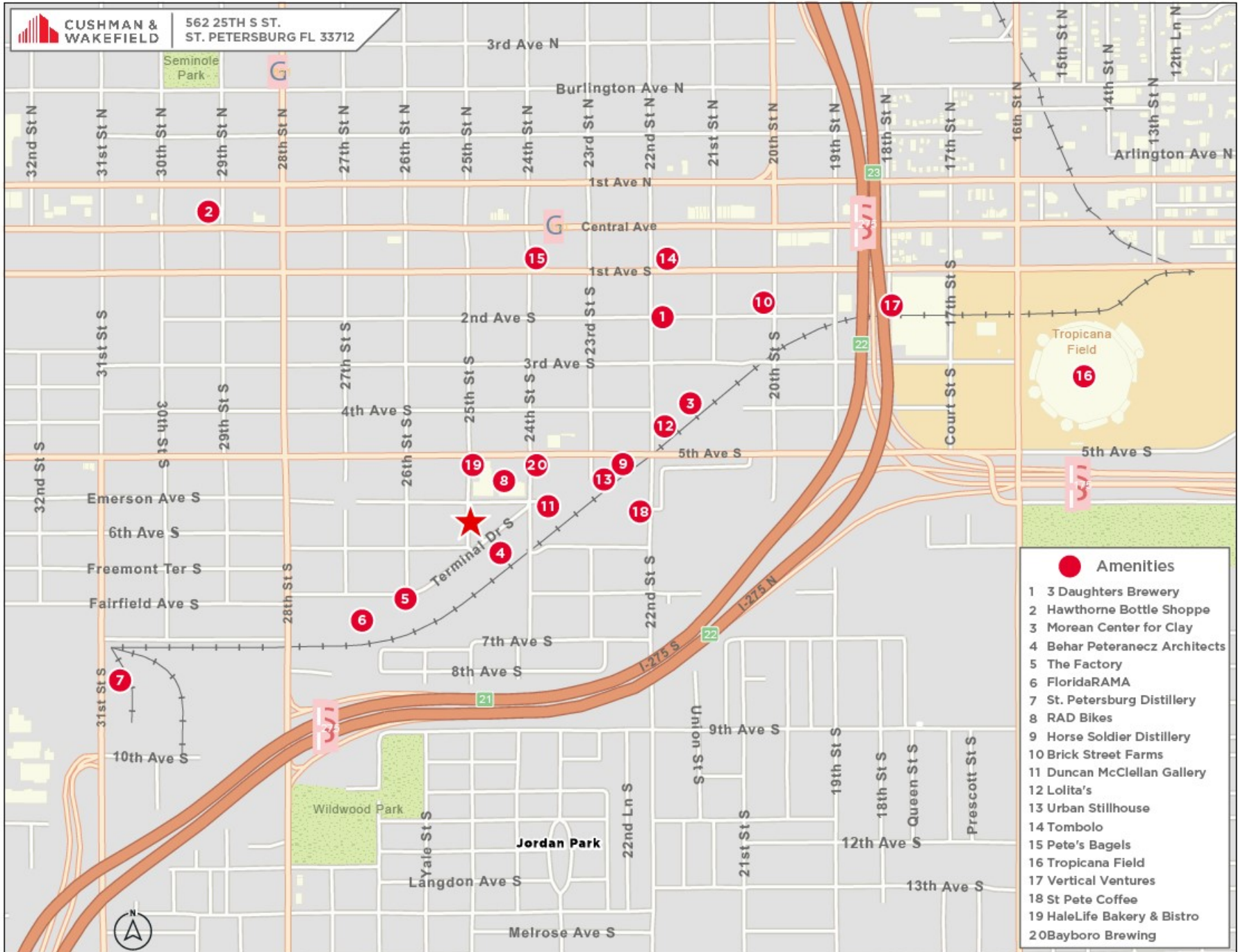
ST. PETERSBURG, FL 33712



In the heart of the Warehouse Arts District, close to The Factory, Fairgrounds, coffee shops, cafes, breweries, distilleries, the Pinellas Trail, artist studios, Morean Clay Center, fitness centers, and design studios.

562 25TH STREET SOUTH

ST. PETERSBURG, FL 33712



562 25TH STREET SOUTH

ST. PETERSBURG, FL 33712



FOR MORE INFORMATION, CONTACT:

WENDY GIFFIN

Executive Director

+1 727 599 3799

wendy.giffin@cushwake.com

©2024 Cushman & Wakefield. All rights reserved. The information contained in this communication is strictly confidential. This information has been obtained from sources believed to be reliable but has not been verified. NO WARRANTY OR REPRESENTATION, EXPRESS OR IMPLIED, IS MADE AS TO THE CONDITION OF THE PROPERTY (OR PROPERTIES) REFERENCED HEREIN OR AS TO THE ACCURACY OR COMPLETENESS OF THE INFORMATION CONTAINED HEREIN, AND SAME IS SUBMITTED SUBJECT TO ERRORS, OMISSIONS, CHANGE OF PRICE, RENTAL OR OTHER CONDITIONS, WITHDRAWAL WITHOUT NOTICE, AND TO ANY SPECIAL LISTING CONDITIONS IMPOSED BY THE PROPERTY OWNER(S). ANY PROJECTIONS, OPINIONS OR ESTIMATES ARE SUBJECT TO UNCERTAINTY AND DO NOT SIGNIFY CURRENT OR FUTURE PROPERTY PERFORMANCE.

