

2702 CLAYTON ROAD

±12,206 RSF OFFICE SPACE | CONCORD, CA 94519

NEXT DOOR TO DOWNTOWN BART



Matt Hatfield
Senior Director

925.296.3310

matt.hatfield@tricommercial.com

LIC: #01937755

Clayton Temple
Sales & Leasing Associate

925-296-3311

clayton.temple@tricommercial.com

LIC: #02006440

2702 CLAYTON ROAD

- Conveniently located next door to Downtown Concord BART
- Many restaurants within walking distance including Todos Santos Plaza
- Covered Parking Garage
- Elevator serviced building
- Fire sprinklered
- Suite 100: ±1,655 SF
- Suite 201: ±5,627 SF with 22 private offices + reception office
- Suite 203: ±930 SF
- Suite 204: ±883 SF
- Suite 206: ±3,111 SF
- Suite 207: ±1,979 SF
- Large secured waiting room
- Kitchen
- Large Conference Room
- 3-4 storage rooms
- **\$2.00 PSF Modified Gross**



Matt Hatfield

925-296-3310
matt.hatfield@tricommercial.com
LIC: #001937755

Clayton Temple

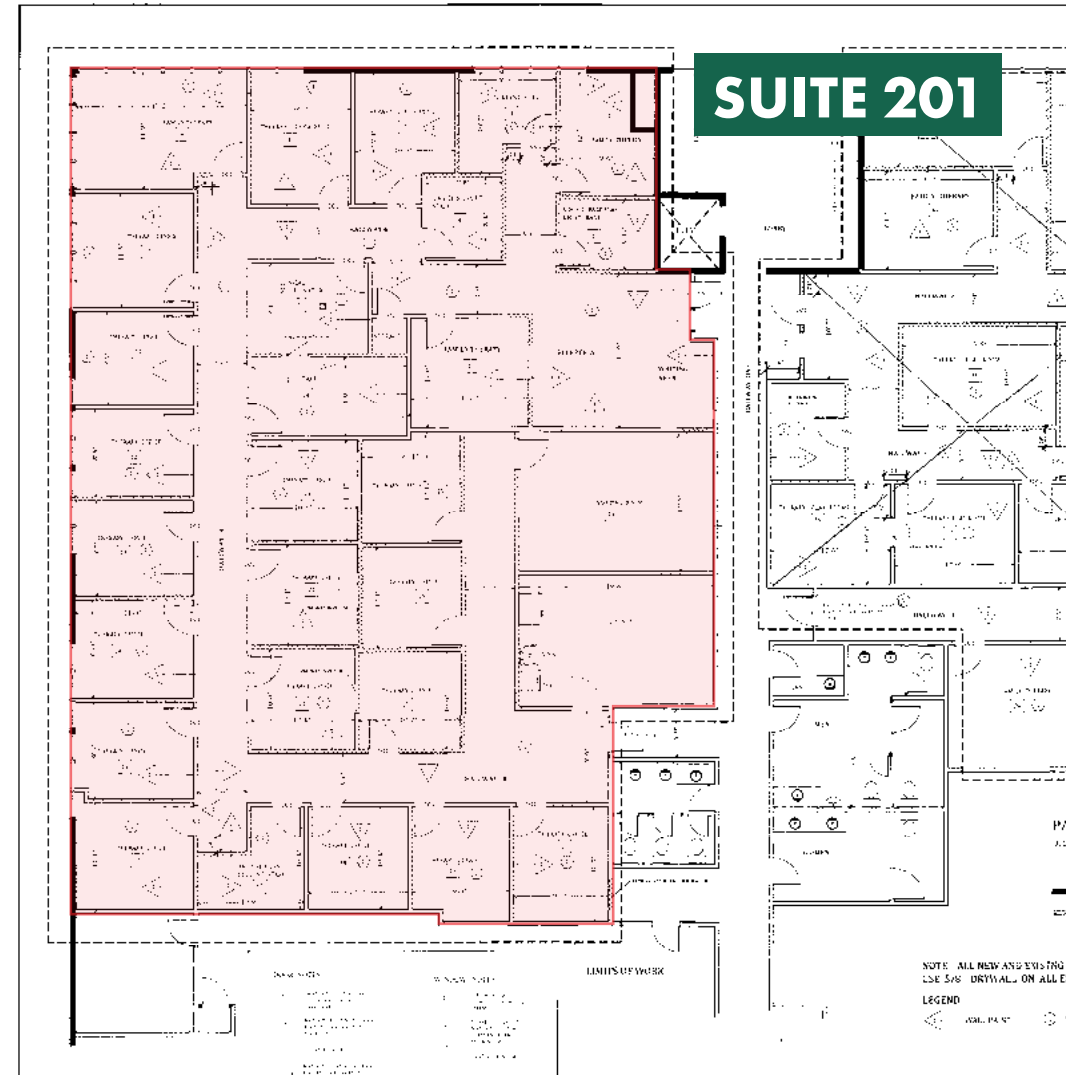
925-296-3311
clayton.temple@tricommercial.com
LIC: #02006440



www.tricommercial.com

2702 CLAYTON ROAD

**±5,627 RSF OFFICE SUITE
WITH MANY PRIVATE OFFICES**



Matt Hatfield

925-296-3310
matt.hatfield@tricommercial.com
LIC: #001937755

Clayton Temple

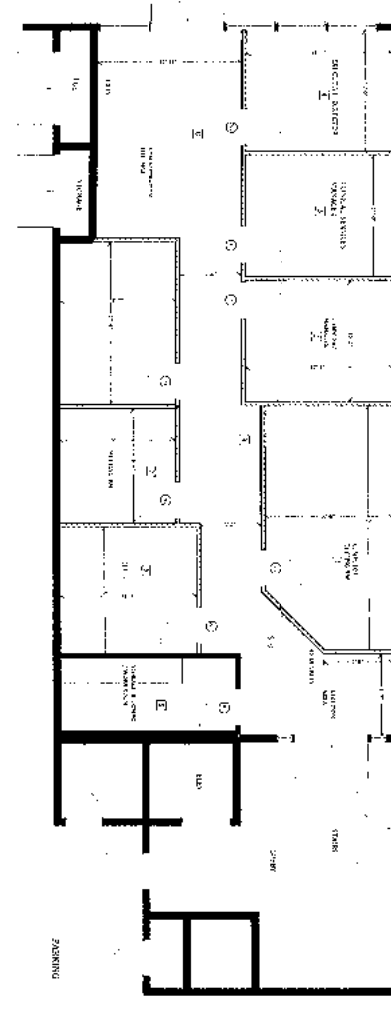
925-296-3311
clayton.temple@tricommercial.com
LIC: #02006440



www.tricommercial.com

2702 CLAYTON ROAD

**±1,655 RSF OFFICE SUITE
WITH MANY PRIVATE OFFICES**



SUITE 100

Matt Hatfield

925-296-3310
matt.hatfield@tricommercial.com
LIC: #001937755

Clayton Temple

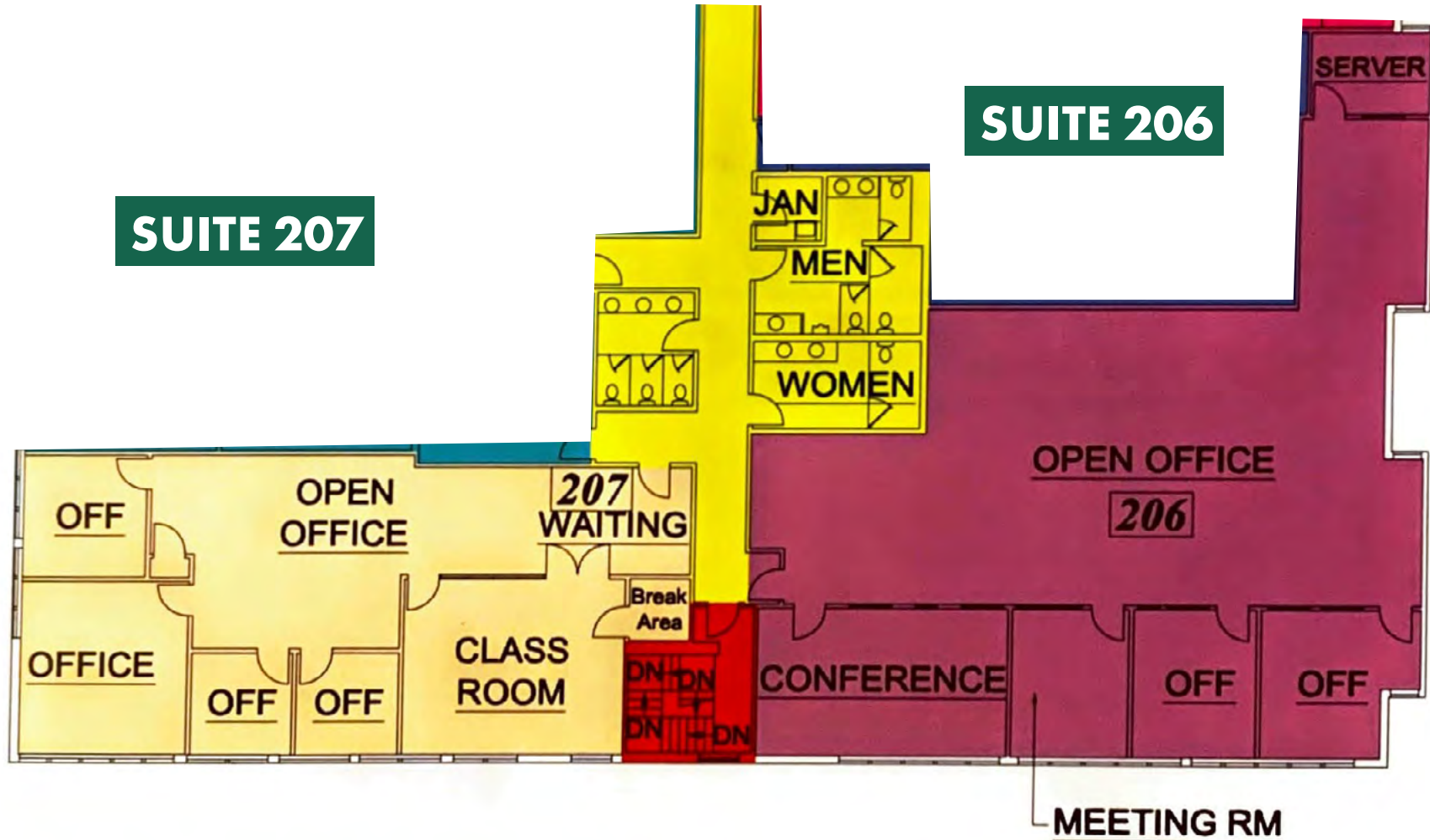
925-296-3311
clayton.temple@tricommercial.com
LIC: #02006440



www.tricommercial.com

2702 CLAYTON ROAD

OFFICE SUITES FOR LEASE
CONCORD, CA



Matt Hatfield
925-296-3310
matt.hatfield@tricommercial.com
LIC: #001937755

Clayton Temple
925-296-3311
clayton.temple@tricommercial.com
LIC: #02006440



www.tricommercial.com

2702 CLAYTON ROAD



Matt Hatfield

925-296-3310
matt.hatfield@tricommercial.com
LIC: #001937755

Clayton Temple

925-296-3311
clayton.temple@tricommercial.com
LIC: #02006440



www.tricommercial.com

