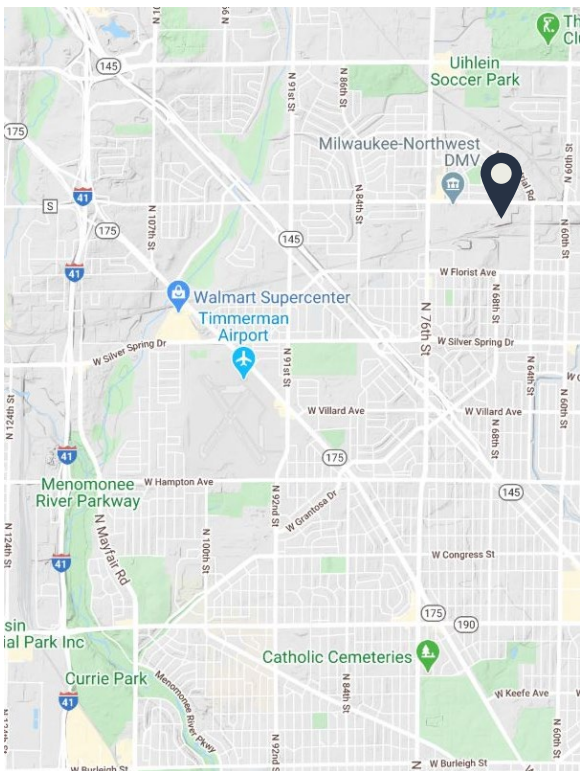


MILL RUN BUSINESS CENTER

6601-6671 W MILL ROAD | MILWAUKEE, 53218



SITE DETAILS

BUILDING A AVAILABILITY	33,614 SF Fully Leased
BUILDING B AVAILABILITY	28,975 SF +/- 20,238 SF
BUILDING C AVAILABILITY	22,430 SF +/- 17,405 SF
BUILDING D AVAILABILITY	18,570 SF Fully Leased
BUILDING E AVAILABILITY	22,746 SF +/- 4,800 SF
OPEX	\$2.68 PSF (est.)
LEASE RATE	\$5.50 PSF NNN

FEATURES

- Professionally managed business center containing 5-single story, flex buildings
- Dock & Drive In loading
- Flexible floor plans with ample parking
- Clear heights ranging from 14.5'-17'
- Zoned IL-1
- Located on The Blue Line bus route

Current tenants will receive \$1,000 if they refer a new tenant at the building who signs a minimum three (3) year lease

**B R E N N A N
I N V E S T M E N T
G R O U P**

Brett Garceau
Colliers International
414 278 6878
brett.garceau@colliers.com

Steve Sewart
Colliers International
414 278 6823
steve.sewart@colliers.com

Charlie Swain
Colliers International
414 982 6581
charlie.swain@colliers.com

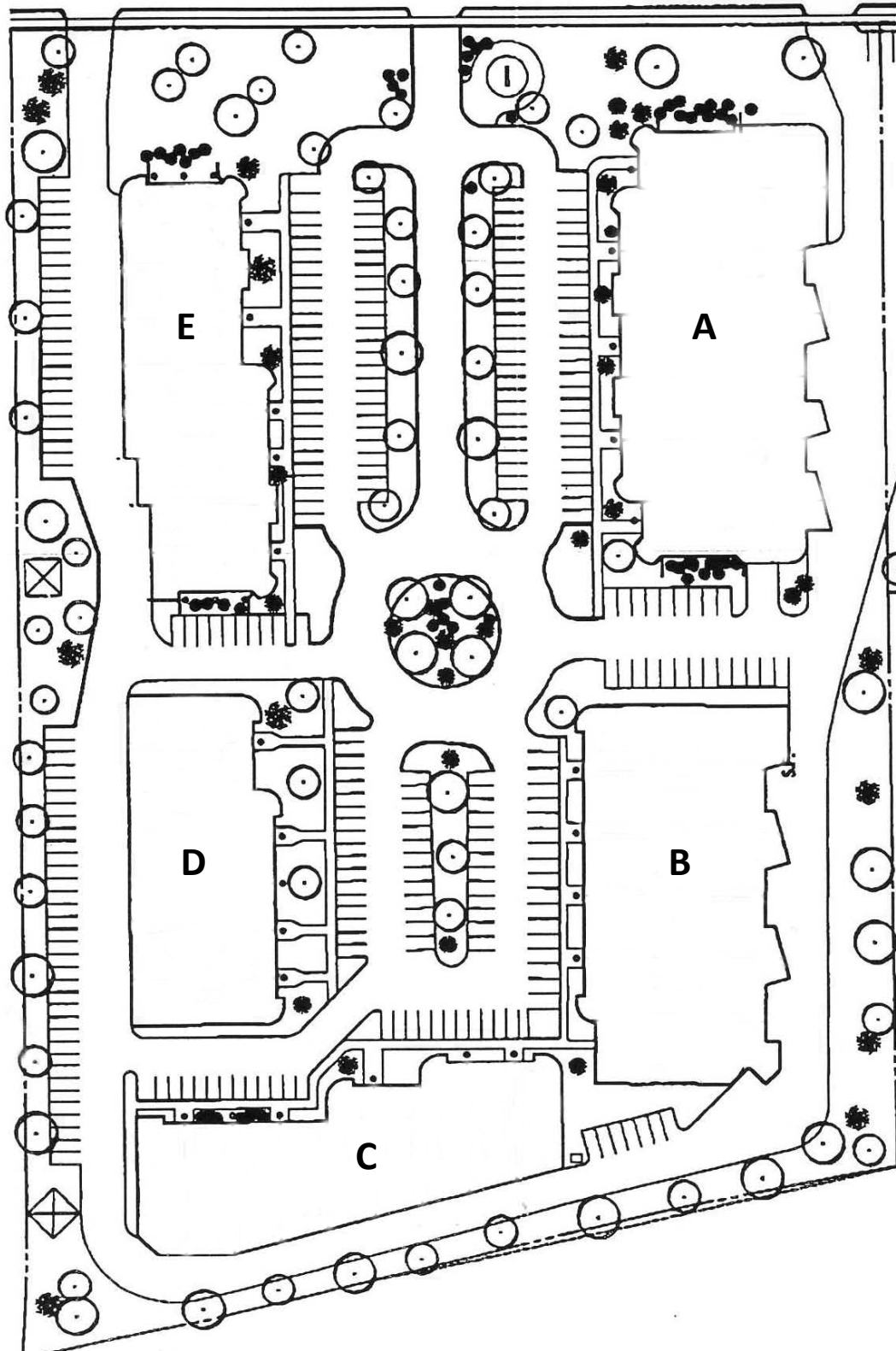
Conor Alban
Colliers International
414 276 9500
conor.alban@colliers.com

MILL RUN BUSINESS CENTER

6601-6671 W MILL ROAD | MILWAUKEE, 53218



SITE PLAN



**B R E N N A N
I N V E S T M E N T
G R O U P**

Brett Garceau
Colliers International
414 278 6878
brett.garceau@colliers.com

Steve Sewart
Colliers International
414 278 6823
steve.sewart@colliers.com

Charlie Swain
Colliers International
414 982 6581
charlie.swain@colliers.com

Conor Alban
Colliers International
414 276 9500
conor.albian@colliers.com

BUILDING B

6601-6613 W MILL ROAD | MILWAUKEE, WI 53218



UNIT 6621, 6623 & 6625 – COMBINED UNITS SPECS

Available SF	+/- 20,238 SF
Office	+/- 1,650 SF
Warehouse SF	+/- 18,588 SF
Loading	(3) Docks

UNIT 6621 – FEATURES

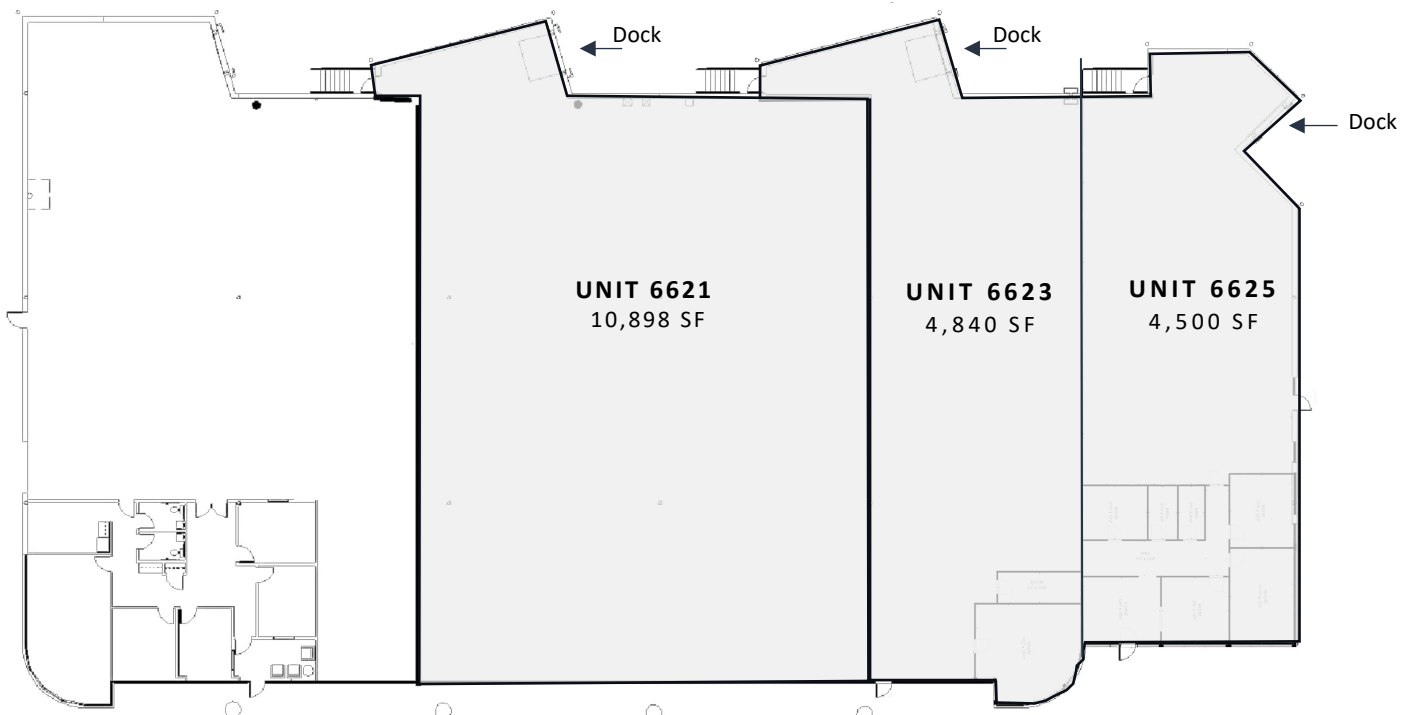
Available SF	+/- 10,898 SF
Warehouse SF	+/- 10,898 SF
Loading	(1) Dock

UNIT 6623 – FEATURES

Available SF	+/- 4,840 SF
Office	+/- 448 SF
Warehouse SF	+/- 4,392 SF
Loading	(1) Dock

UNIT 6625 – FEATURES

Available SF	+/- 4,500 SF
Office	+/- 1,202 SF
Warehouse SF	+/- 3,298 SF
Loading	(1) Dock



BUILDING C

6629-6643 W MILL ROAD | MILWAUKEE, WI 53218



UNIT 6639 – FEATURES

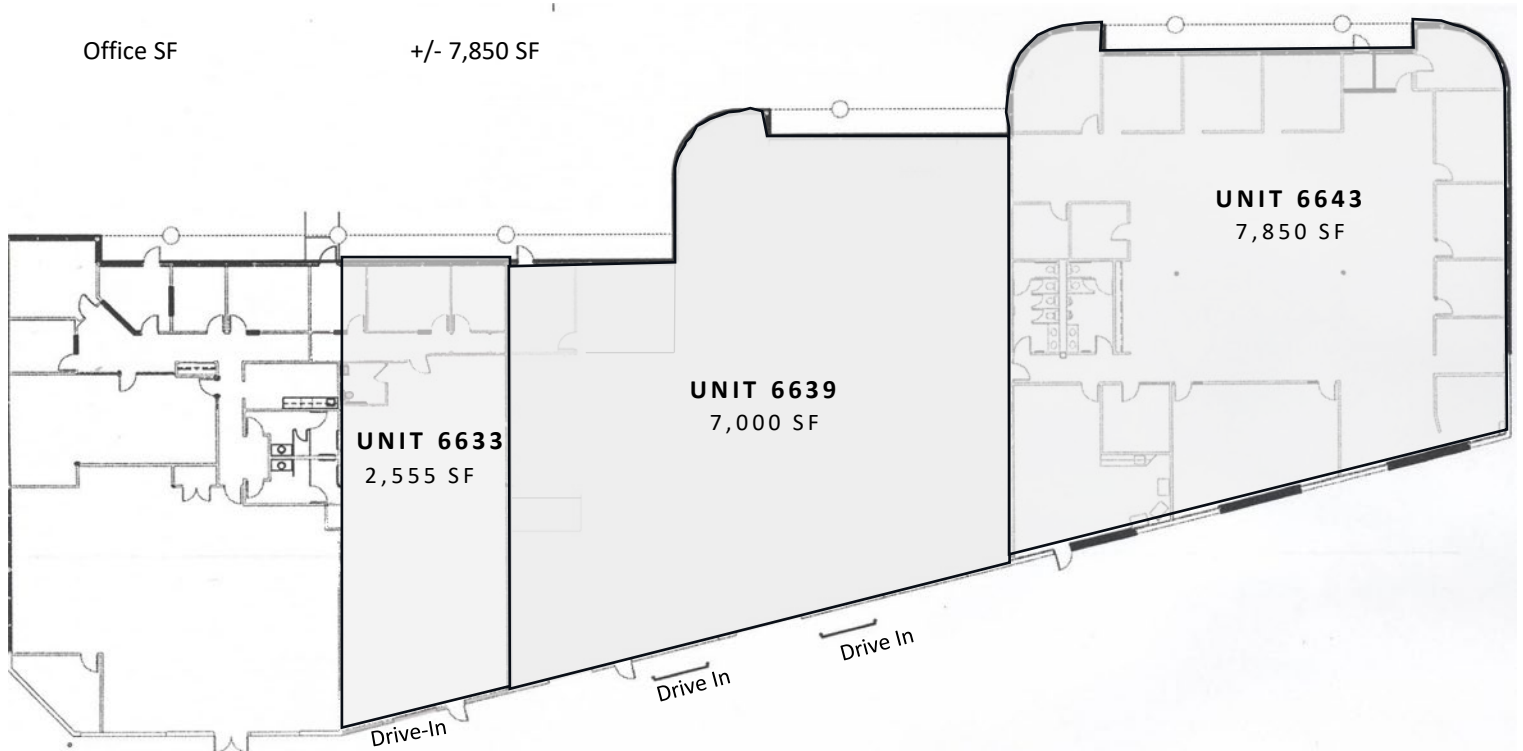
Available SF	+/- 7,000 SF
Office SF	+/- 750 SF
Warehouse SF	+/- 6,250 SF
Loading	(2) Drive-Ins

UNIT 6633 – FEATURES

Available SF	+/- 2,555 SF
Office SF	+/- 500 SF
Warehouse SF	+/- 2,055 SF
Loading	(1) Drive-In

UNIT 6643 – FEATURES

Available SF	+/- 7,850 SF
Office SF	+/- 7,850 SF



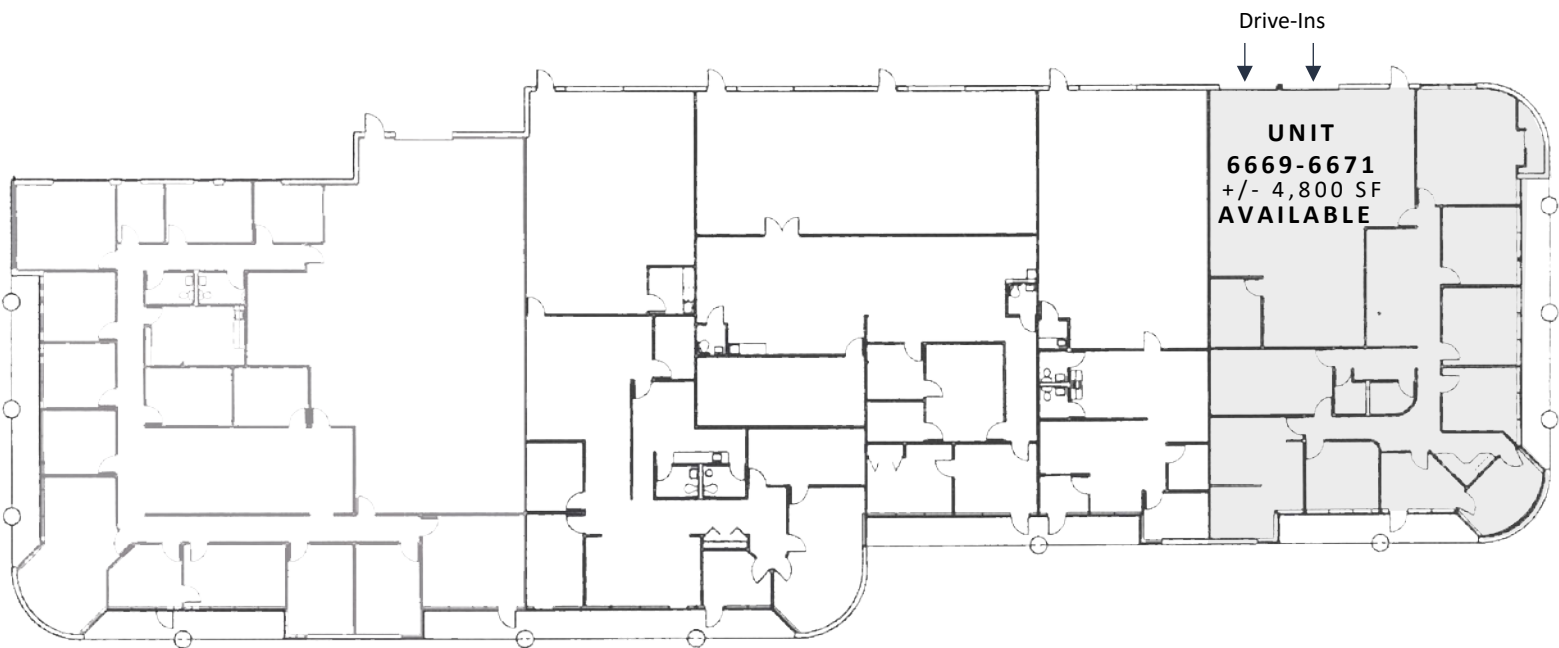
BUILDING E

6655-6671 W MILL ROAD | MILWAUKEE, WI 53218



UNIT 6669-6671

Available SF	+/- 4,800 SF
Office SF	+/- 2,800 SF
Warehouse SF	+/- 2,000 SF
Loading	(2) Drive-Ins



Non-Residential Customers

Wisconsin law requires all real estate licensees to give the following information about brokerage services to prospective customers.

Prior to negotiating on your behalf the Brokerage firm, or an agent associated with the firm, must provide you the following disclosure statement:

Broker Disclosure to Customers

You are a customer of the broker. The broker is either an agent of another party in the transaction or a subagent of another broker who is the agent of another party in the transaction. The broker, or a salesperson acting on behalf of the broker, may provide brokerage services to you, the broker owes you, the customer, the following duties:

- The duty to provide brokerage services to you fairly and honestly.
- The duty to exercise reasonable skill and care in providing brokerage services to you.
 - The duty to provide you with accurate information about market conditions with a reasonable time if you request it, unless prohibited by law.
- The duty to protect your confidentiality. Unless the law requires it, the broker will not disclose your confidential information or the confidential information to other parties.
- The duty to safeguard trust funds and other property the broker holds.
- The duty, when negotiating, to present contract proposals in an objective and unbiased manner and disclose the advantages and disadvantages of the proposals.

Please review this information carefully. A broker or salesperson can answer your questions about brokerage services, but if you need legal advice, tax advice or a professional home inspection contact an attorney, tax advisor, or home inspector. This disclosure is required by section 452.135 of the Wisconsin statutes and is for information only. It is a plain-language summary of a broker's duties to a customer under section 452.133 (1) of the Wisconsin statutes.

Confidentiality Notice to Customers

Broker will keep confidential any information given to broker in confidence, or any information obtained by broker that he or she knows a reasonable person would want to be kept confidential. Unless the information must be disclosed by law or you authorize the broker to disclose particular information. A broker shall continue to keep the information confidential after broker is no longer providing brokerage services to you.

The following information is required to be disclosed by law:

1. Material adverse facts, as defined in section 452.01 (5g) of the Wisconsin Statutes.
2. Any facts known by the broker that contradict any information included in a written inspection report on the property or real estate that is the subject of the transaction.

No representation is made as to the legal validity of any provision or the adequacy of any provision in any specific transaction.

Copyright 2007 by Wisconsin REALTORS Association.
Drafted by Attorney Debra Peterson Conrad.

To ensure that the broker is aware of what specific information you consider confidential, you may list that information below. At a later time, you may also provide the broker with other information you consider to be confidential.

Confidential information: _____

Non-Confidential information: (The following information may be disclosed by Broker): _____

(Insert information you authorize the broker to disclose such as financial qualification information.)

Consent to Telephone Solicitation

I/We agree that the broker and any affiliated settlement service providers (for example, a mortgage company or title company) may call our/my home or cell phone numbers regarding issues, goods and services related to the real estate transaction until I/we withdraw this consent in writing.

List Home/Cell Numbers: _____

Sex Offender Registry

Notice: You may obtain information about the sex offender registry and persons registered with the registry by contacting the Wisconsin Department of Corrections on the Internet at <http://offender.doc.state.wi.us/public/>

Definition of Material Adverse Facts

A "material adverse fact" is defined in Wis. Stat 452.01 (5g) as an adverse fact that a party indicates is of such significance, or that is generally recognized by a competent licensee as being of such significance to a reasonable party, that it affects or would affect the party's decision to enter into a contract or agreement concerning a transaction or affects or would affect the party's decision to enter into a contract or agreement concerning a transaction or affects or would affect the party's decision about the terms of such a contract or agreement. An "adverse" fact is defined in Wis. Stat. 452.01 (1e) as a condition or occurrence that a competent licensee generally recognizes will significantly and adversely affect the value of the property, significantly reduce the structural integrity of improvements to real estate, or present a significant health risk to occupants of the property; or information that indicates that a party to a transaction is not able to or does not intend to meet his or her obligations under a contract or agreement made concerning the transaction.