

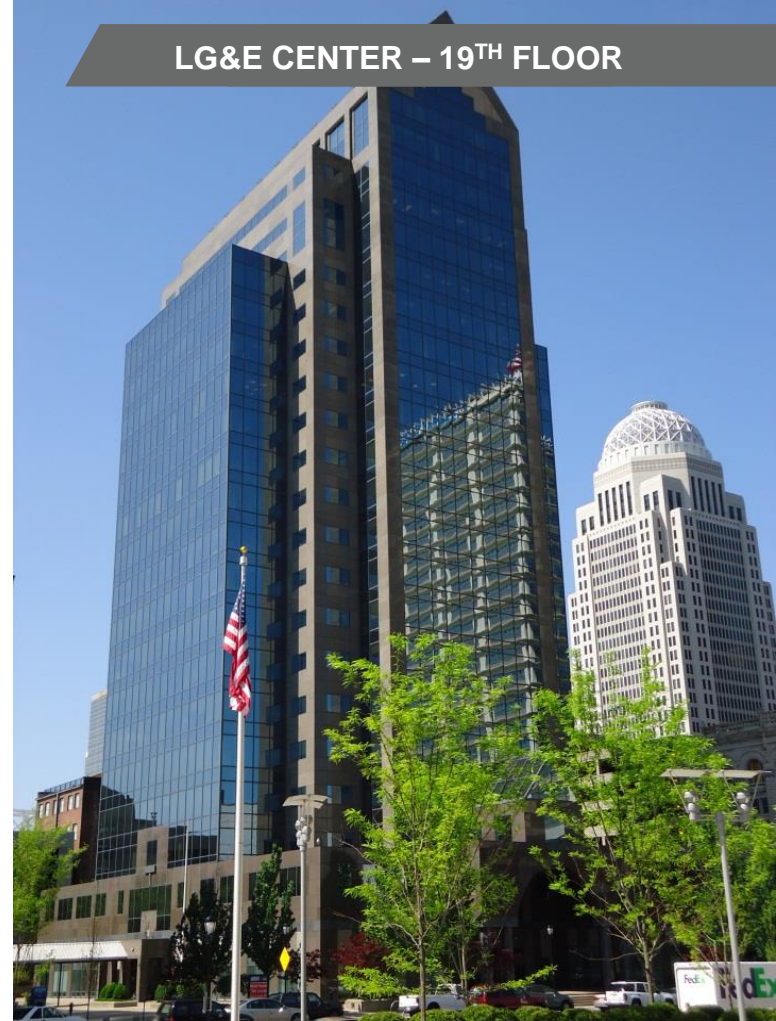
OFFICE SPACE FOR LEASE
2,997 SF

PROPERTY FEATURES

- 287,990 SF class A building
- Two suites available – 2,240 SF & 2,997 SF
- Upscale lobby
- Convenient access to all downtown interstates
- Close proximity to convention center, KFC Yum! Center, hotels, restaurants, and shopping
- On-site amenities include:
 - Restaurant
 - ATM machine
 - Wi-Fi hotspot
 - On-site property management
 - On-site security



LG&E CENTER – 19TH FLOOR



For more information, please contact:

E.P. SCHERER
Senior Director
502 589 5150 ext. 234
epscherer@commercialkentucky.com

333 E. Main Street, Suite 510
Louisville, KY 40202
phone: +1 502 589 5150
www.CommercialKentucky.com

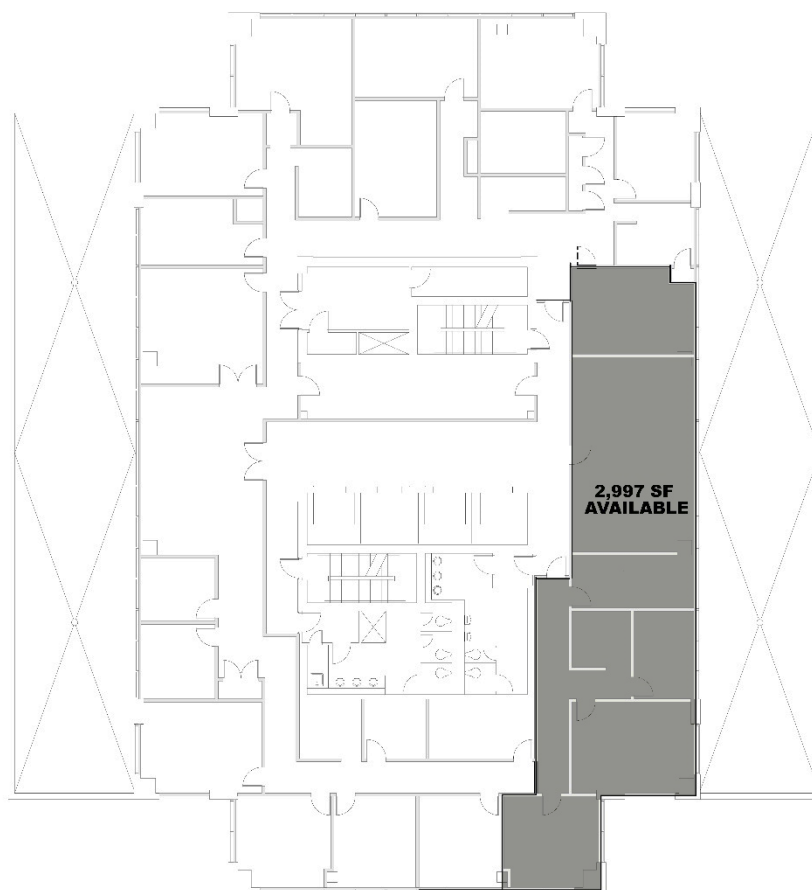


Aerial Map

For more information, please contact:

E.P. SCHERER
Senior Director
502 589 5150 ext. 234
epscherer@commercialkentucky.com

333 E. Main Street, Suite 510
Louisville, KY 40202
phone: +1 502 589 5150
www.CommercialKentucky.com



19th Floor Plan

For more information, please contact:

E.P. SCHERER
Senior Director
502 589 5150 ext. 234
epscherer@commercialkentucky.com

333 E. Main Street, Suite 510
Louisville, KY 40202
phone: +1 502 589 5150
www.CommercialKentucky.com