

FOR SALE OR LEASE
90,104 SF

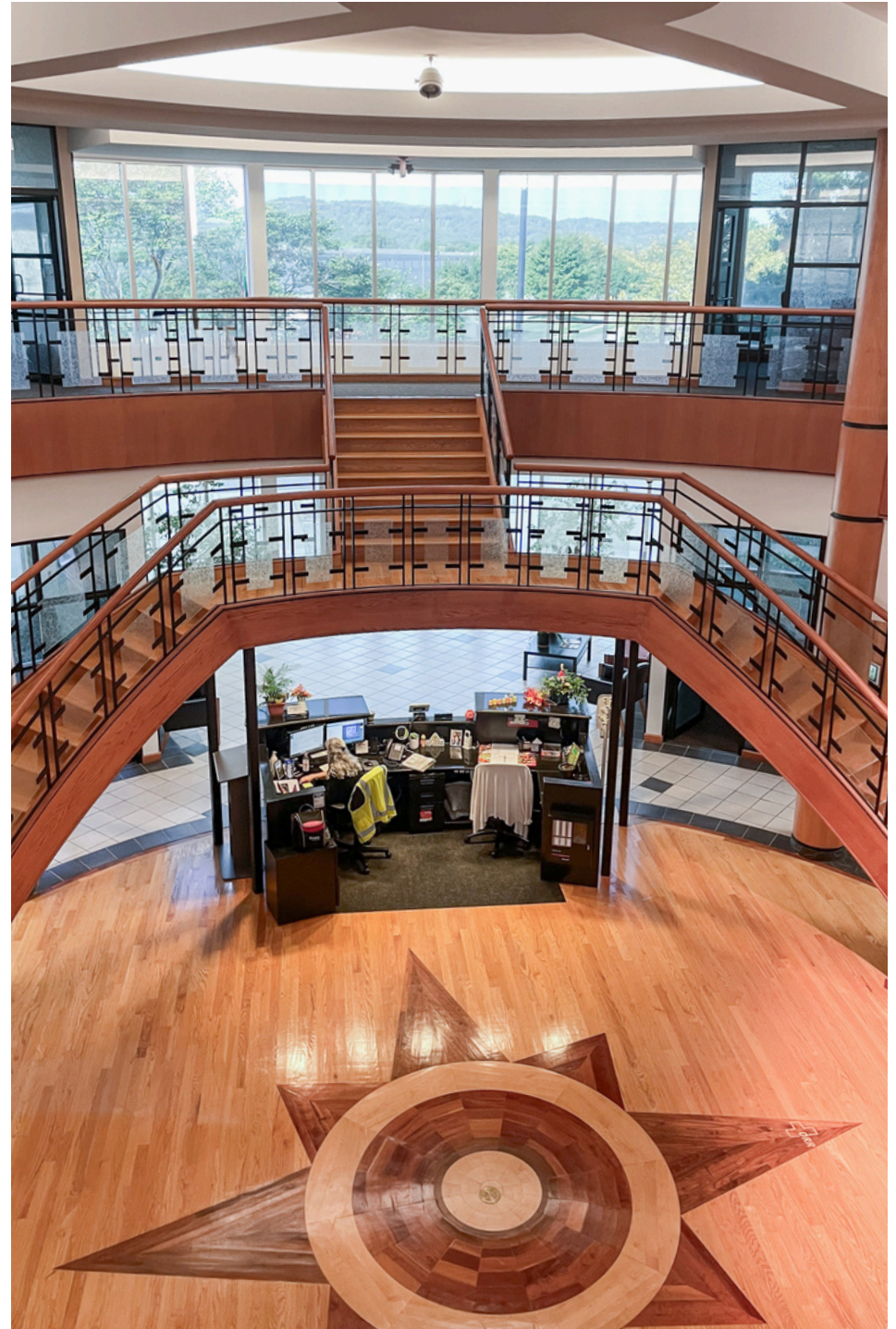


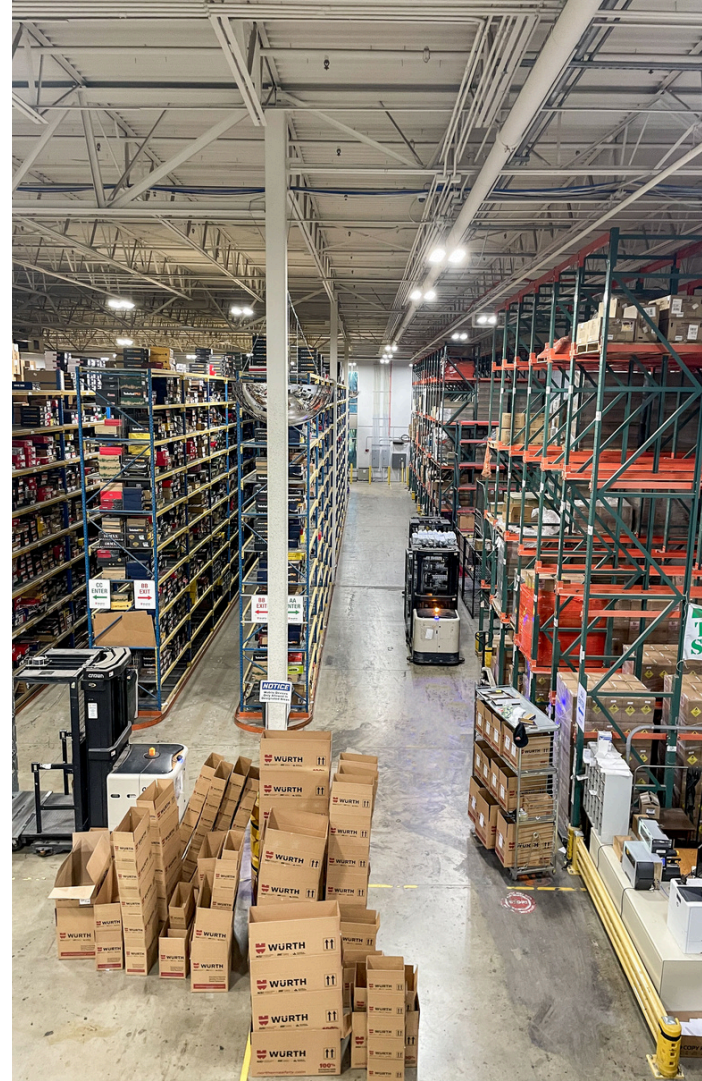
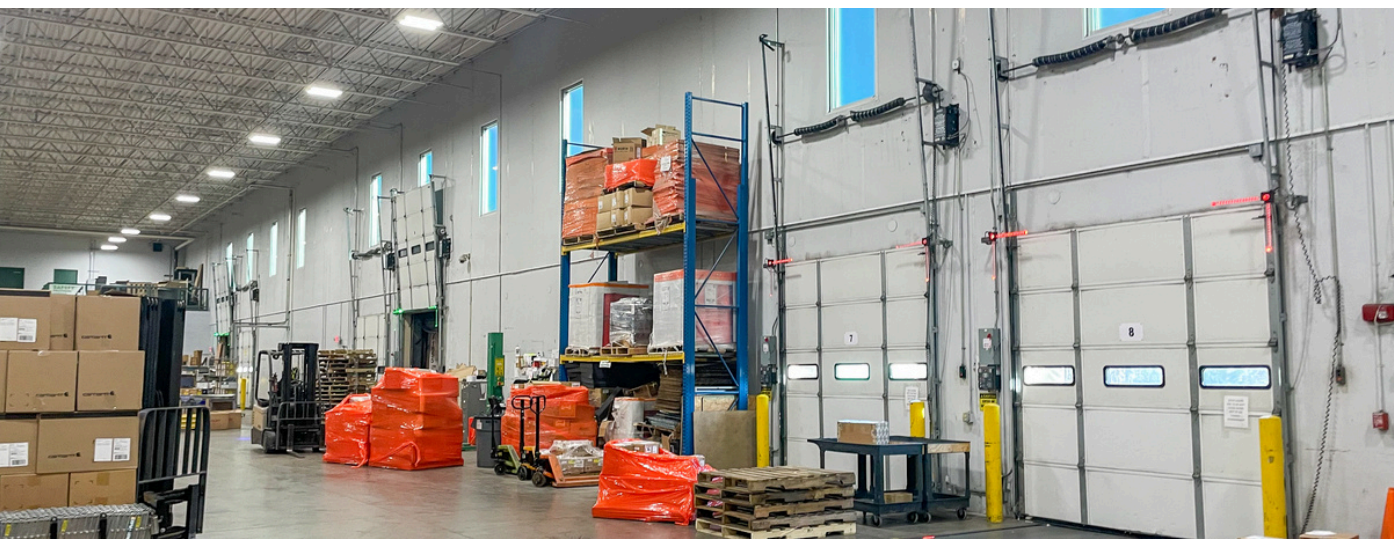
COMMERCE CROSSINGS
11601 INTERCHANGE DRIVE • LOUISVILLE, KENTUCKY

PROPERTY HIGHLIGHTS

A versatile warehouse and impressive office space available in Louisville, Kentucky, offering businesses a strategic location within one of the region's strongest logistics markets.

*Building Size:	90,104 SF
*Warehouse Area:	44,900 SF (Fully Air Conditioned)
*Office Area:	45,204 SF (2 Floors)
Zoning	PEC
Site Area:	7.3 Acres
Clear Height:	26' - 28'
Lighting	LED
Automated Dock-High Doors, Levelers, & Seals	7
Drive-In Doors	2
Sprinkler Protection	ESFR System
Battery Charging	10 Stations
Power	1200 Amp 277/480 Volts 3-Phase
Parking:	158
Year Built:	2005
*Per Appraisal	







2.1 MILES

TO INTERSTATE I-265

4.1 MILES

TO INTERSTATE 65

7.0 MILES

TO FORD ASSEMBLY PLANT

7.0 MILES

TO UPS WORLDPORT

8.1 MILES

TO GE APPLIANCE PARK

9.7 MILES

TO AIRPORT



CONTACT INFORMATION

E. PHIL SCHERER, III

philscherer@commercialkentucky.com
+1 502 589 5150

ROBERT WALKER, SIOR, CCIM

rwalker@commercialkentucky.com
+1 502 719 3254

STEPHAN F. GRAY, SIOR

sgray@commercialkentucky.com
+1 502 719 3256

JAKE MILLS, SIOR

jmills@commercialkentucky.com
+1 502 719 3252



©2025 Cushman & Wakefield. All rights reserved. The information contained in this communication is strictly confidential. This information has been obtained from sources believed to be reliable but has not been verified. NO WARRANTY OR REPRESENTATION, EXPRESS OR IMPLIED, IS MADE AS TO THE CONDITION OF THE PROPERTY (OR PROPERTIES) REFERENCED HEREIN OR AS TO THE ACCURACY OR COMPLETENESS OF THE INFORMATION CONTAINED HEREIN, AND SAME IS SUBMITTED SUBJECT TO ERRORS, OMISSIONS, CHANGE OF PRICE, RENTAL OR OTHER CONDITIONS, WITHDRAWAL WITHOUT NOTICE, AND TO ANY SPECIAL LISTING CONDITIONS IMPOSED BY THE PROPERTY OWNER(S). ANY PROJECTIONS, OPINIONS OR ESTIMATES ARE SUBJECT TO UNCERTAINTY AND DO NOT SIGNIFY CURRENT OR FUTURE PROPERTY PERFORMANCE.

Independently Owned & Operated / A Member of the Cushman & Wakefield Alliance