

FOR LEASE OR SALE

1035 NW 112TH ST, OKLAHOMA CITY, OKLAHOMA, 73114



HORIZON
COMMERCIAL REAL ESTATE



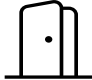

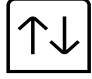


Nicole Mayes | **Spencer Bost**
Senior Vice President | Associate
405.209.3992 | 405.628.7481
www.horizoncreok.com

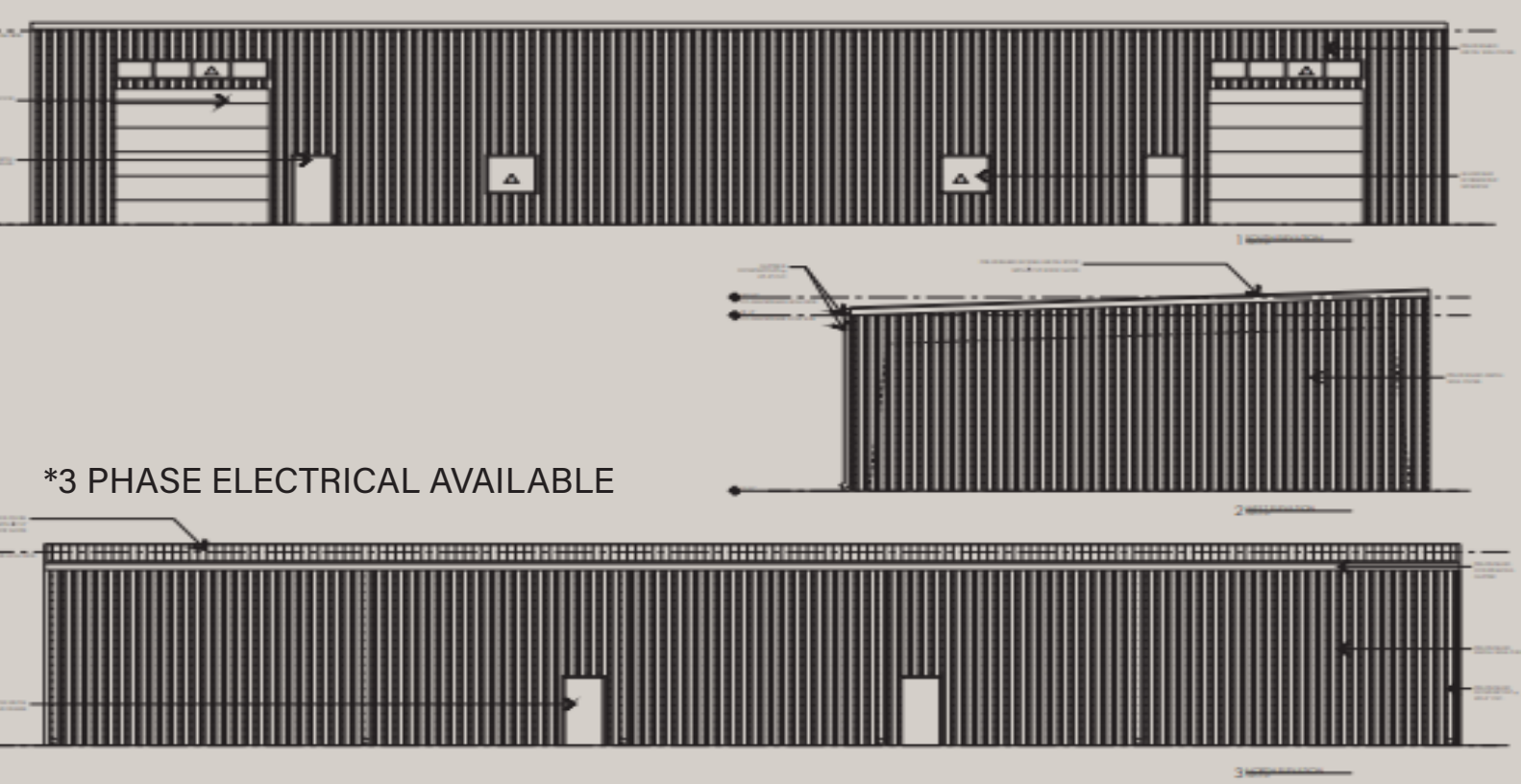
PROPERTY INFORMATION

FOR LEASE: \$12.00/SF NNN

FOR SALE: \$165.00/SF

CONSTRUCTION	METAL
OVERHEAD DOOR	14' x 12'
CLEAR HEIGHT	18' - 21'
ZONING	LIGHT INDUSTRIAL

-  BRAND NEW, MODERN, CUSTOMIZABLE LIGHT INDUSTRIAL SPACES
-  FIRST SPEC BUILDING IS EXPECTED TO BE READY IN MAY 2024!
-  EACH BUILDING INCLUDES OVERHEAD DOOR, STOREFRONT, & SPRAY FOAM INSULATION.
-  THE STANDARD OFFICE SPACE CAN BE CHANGED & CUSTOMIZED TO FIT YOUR NEEDS
-  LEASE-THEN-PURCHASE AGREEMENTS AVAILABLE WITH NEGOTIABLE REBATES
-  EXTREMELY FLEXIBLE SPACES PERFECT FOR YOUR STORAGE, OFFICE, OR WAREHOUSE NEEDS
-  LOCATED BETWEEN BROADWAY EXT & KILPATRICK TPKE - JUST SOUTH OF CHISHOLM CREEK.



BUILDING NUMBER	BUILDING SQUARE FEET
Building One	7,000 sf
Building Two (sold)	4,000 sf
Building Three	4,000 sf
Building Four	5,000 sf
Building Five	4,500 sf
Building Six	4,500 sf
Building Seven	4,500 sf
Building Eight	4,500 sf
Building Nine	4,500 sf
Building Ten (coming soon)	4,500 sf

ALTHOUGH THE INFORMATION HAS BEEN OBTAINED FROM TRUSTWORTHY SOURCES, HORIZON CRE MAKES NO GUARANTEES, ASSURANCES, OR WARRANTIES ABOUT THE COMPLETENESS OR ACCURACY OF THE DATA. THIS PROPERTY IS BEING PRESENTED WITH THE POSSIBILITY OF ERRORS AND OMISSIONS. MODIFICATIONS MAY OCCUR THAT ALTER THE FACTS OF THIS PRESENTATION WITHOUT NOTICE.



HORIZON
COMMERCIAL REAL ESTATE

Nicole Mayes | **Spencer Bost**
Senior Vice President | Associate
405.209.3992 | 405.628.7481
www.horizoncreok.com



Sold

**Coming
Soon**

N Western Ave

NW 112th Street

HORIZON
COMMERCIAL REAL ESTATE

Nicole Mayes
Senior Vice President
405.209.3992

Spencer Bost
Associate
405.628.7481
www.horizoncreok.com

Walmart

Cabela's

TOPGOLF

COSTCO

Western

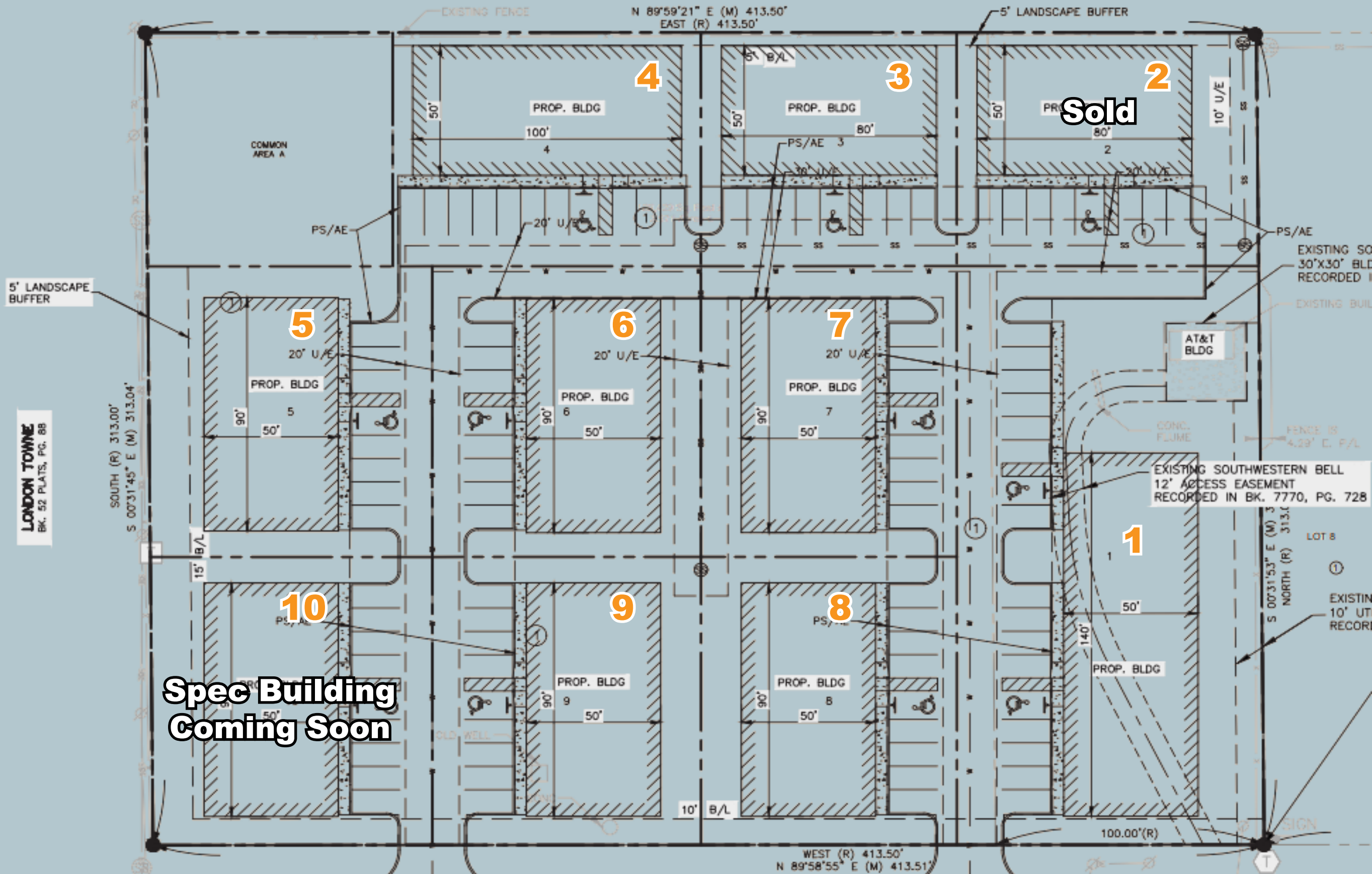
Subject Site

112th

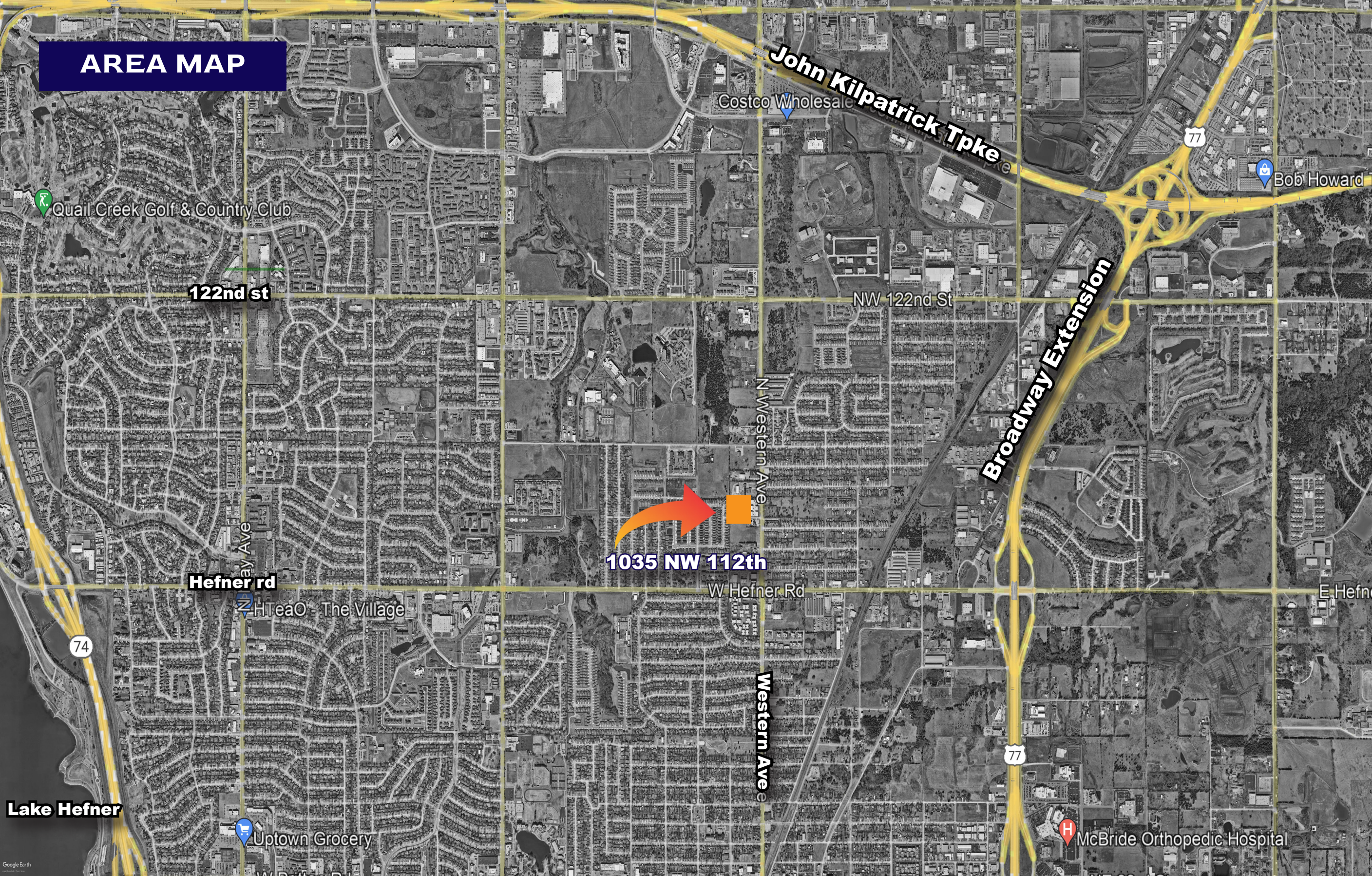
HORIZON
COMMERCIAL REAL ESTATE

Nicole Mayes
Senior Vice President
405.209.3992
www.horizoncreok.com

Spencer Bost
Associate
405.628.7481



AREA MAP



HORIZON
COMMERCIAL REAL ESTATE

Nicole Mayes
Senior Vice President
405.209.3992

Spencer Bost
Associate
405.628.7481

www.horizoncreek.com

Nicole Mayes
Senior Vice President
405.209.3992
nicole.mayes@horizoncreek.com

Spencer Bost
Associate
405.628.7481
spencer.bost@horizoncreek.com

301 Lilac Drive
Suite 200
Edmond, OK 73034
horizoncreek.com



HORIZON
COMMERCIAL REAL ESTATE

The logo features the word "HORIZON" in a bold, dark blue, sans-serif font. The letter "O" is replaced by a stylized orange and yellow sun or sphere. Below "HORIZON" is a thin horizontal line, and underneath that, the words "COMMERCIAL REAL ESTATE" are written in a smaller, dark blue, sans-serif font. The entire logo is enclosed in a thin dark blue rectangular border.