



CAPITOL
EQUITIES

FOR LEASE

Providing creative commercial real estate solutions since 1997



OFFICE | 1,200 SF

DOWNTOWN CBUS

5 EAST LONG STREET, COLUMBUS, OH 43215

ED FELLOWS

VP Brokerage
614.760.5660 x123
efellows@capitolequities.com

J.R. KERN

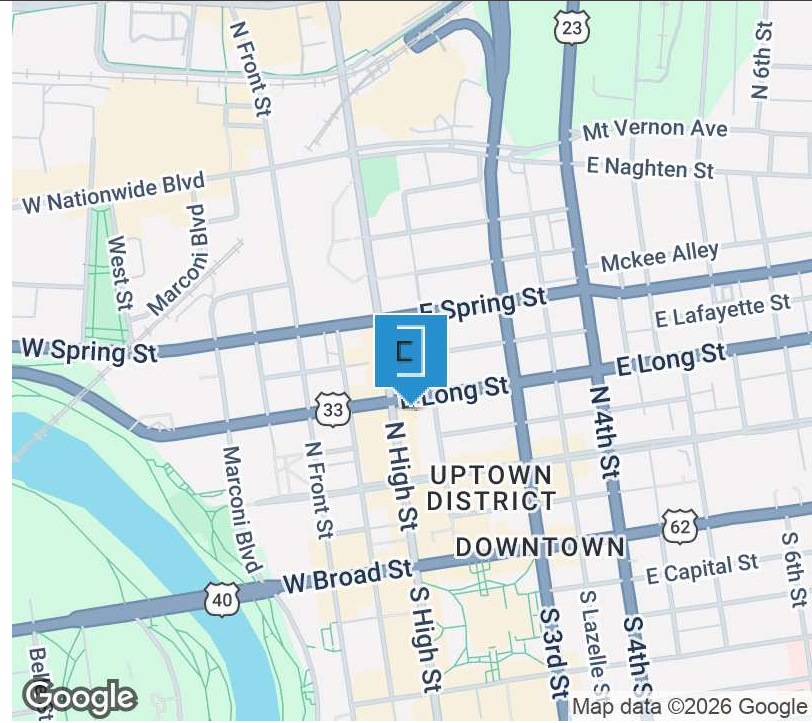
President
614.760.5660 x124
jrkern@capitolequities.com



**CAPITOL
EQUITIES**

FOR LEASE | OFFICE DOWNTOWN COLUMBUS

5 EAST LONG STREET, COLUMBUS, OH 43215



Property Description

Fully-updated, open layout office suites in the heart of downtown Columbus adjacent to the most exciting transformation in downtown Columbus.

Property Highlights

- Modern, open layout office suites with updated lighting and flooring, and XL windows with great downtown Columbus view
- Adjacent to several new retailers and art galleries, and less than one-block from prime restaurants - Hank's Low Country, Chouette French Bistro, Veritas and Speck.
- Located two blocks from Capitol Square
- Several easy parking options adjacent to building

Location Description

Prominent corner location at Long and High Streets in the central business district. Across from the new Nicholas residential project and close to several high-profile residential projects. Two blocks from Capitol Square. Walking distance to several restaurants and retailers including Speck, Veritas, Hank's Seafood and Chouette French Bistro

OFFERING SUMMARY

Available SF	1,200 SF
Lease Rate:	\$15.50 SF/yr
Utilities:	Included in Rents

ED FELLOWS

VP Brokerage
614.760.5660 x123
efellows@capitolequities.com

J.R. KERN

President
614.760.5660 x124
jrkern@capitolequities.com

CAPITOLEQUITIES.COM

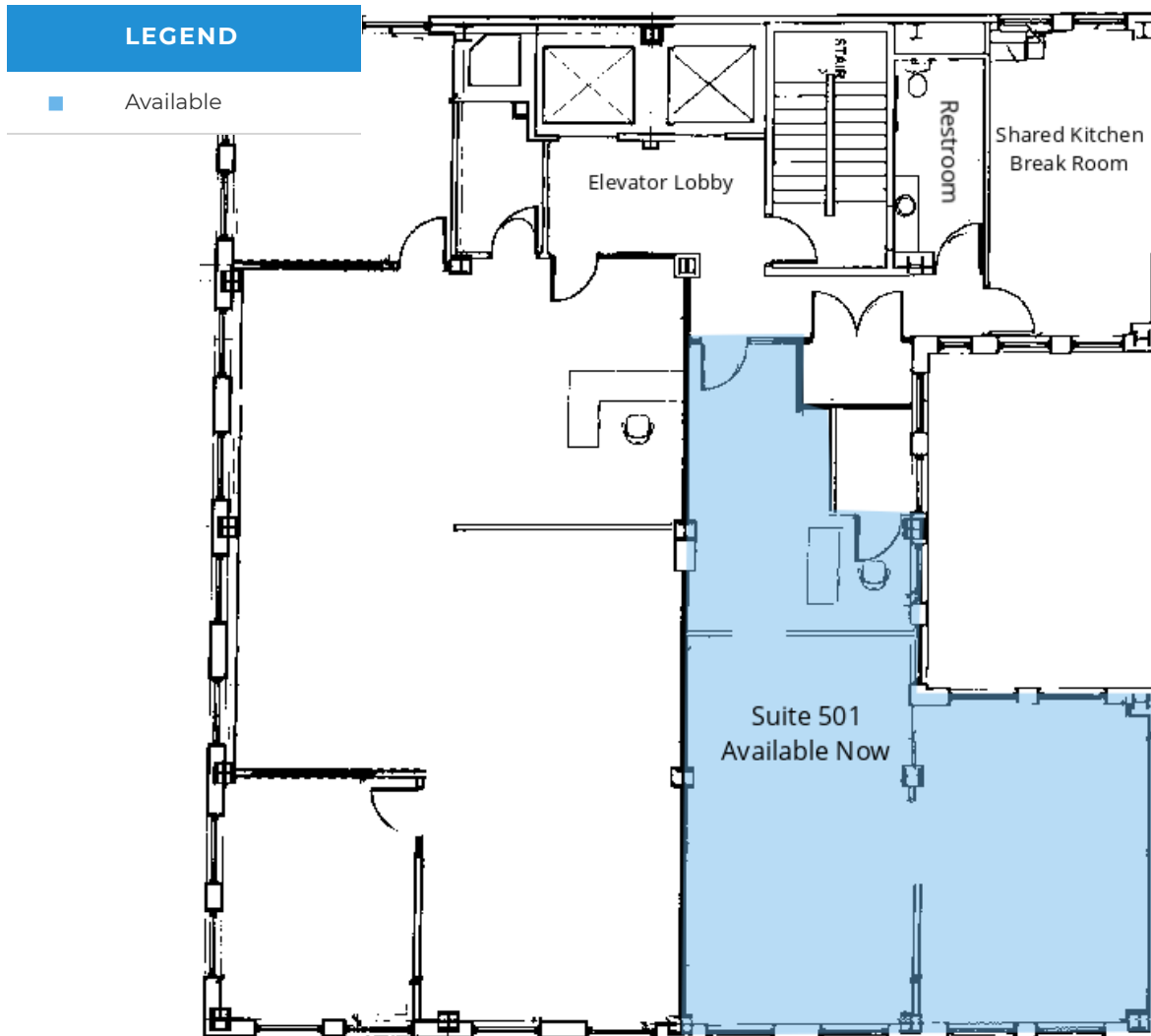
The information contained herein was furnished by sources believed to be reliable, but it is not guaranteed, warranted or represented by Capitol Equities. The presentation of this property is submitted subject to errors, omissions, change of price or condition prior to sale or lease, or withdrawn without notice.



CAPITOL
EQUITIES

FOR LEASE | OFFICE 5TH FLOOR | AVAILABLE

5 EAST LONG STREET, COLUMBUS, OH 43215



Available Spaces

SUITE	SIZE	RATE	DESCRIPTION
5 East Long Street, Suite 501	1,200 SF	\$15.50 SF/yr	Gorgeous interior with dramatic finishes and mostly open interior with one large private office, large open work/conference room and reception area. AVAILABLE NOW

ED FELLOWS

VP Brokerage
614.760.5660 x123
efellows@capitolequities.com

J.R. KERN

President
614.760.5660 x124
jrkern@capitolequities.com



CAPITOL
EQUITIES

FOR LEASE | OFFICE 5TH FLOOR | AVAILABLE

5 EAST LONG STREET, COLUMBUS, OH 43215



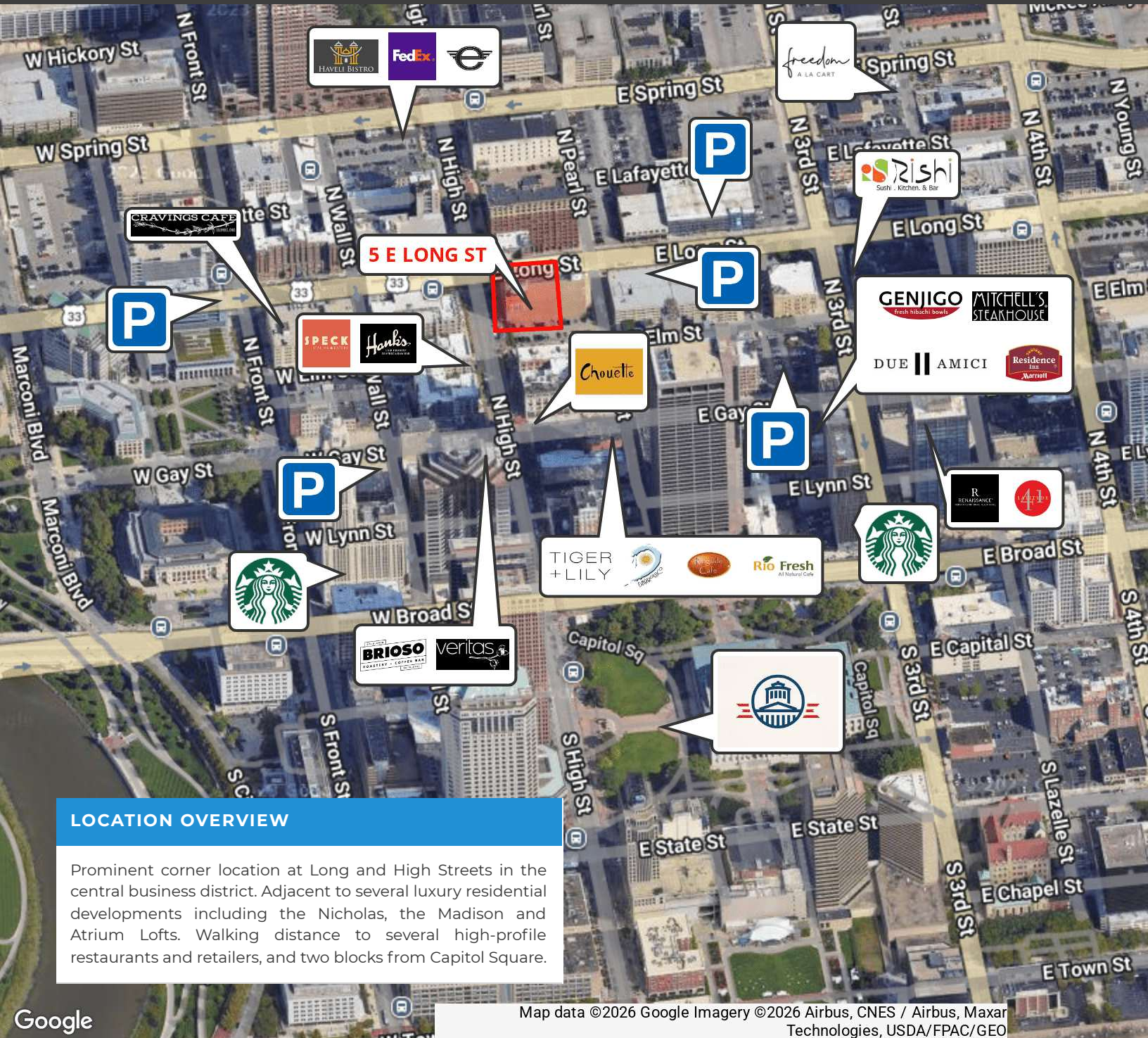
ED FELLOWS

VP Brokerage
614.760.5660 x123
efellows@capitolequities.com

J.R. KERN

President
614.760.5660 x124
jrkern@capitolequities.com

CAPITOLEQUITIES.COM



LOCATION OVERVIEW

Prominent corner location at Long and High Streets in the central business district. Adjacent to several luxury residential developments including the Nicholas, the Madison and Atrium Lofts. Walking distance to several high-profile restaurants and retailers, and two blocks from Capitol Square.

Map data ©2026 Google Imagery ©2026 Airbus, CNES / Airbus, Maxar Technologies, USDA/FPAC/GEO

ED FELLOWS

VP Brokerage
614.760.5660 x123
efellows@capitolequities.com

J.R. KERN

President
614.760.5660 x124
jrkern@capitolequities.com