



Class A Medical Office Space for Lease

**2741 NE MCBAIN DRIVE
LEE'S SUMMIT, MISSOURI**

Property Highlights

- 4,350 sf available
- 2nd floor space
- Excellent opportunity for all types of medical users
- 10 exam rooms
- Signage opportunity
- Proximity to Saint Luke's East and Centerpoint Medical Center
- Adjacent to I-470
- Lease rate \$22.00/sf, NNN

For information, please contact:

Nick Suarez, SIOR, CCIM
Senior Managing Director, Principal
t 816-512-1012
nsuarez@nzimmer.com

1220 Washington Street, Suite 300
Kansas City, MO 64105

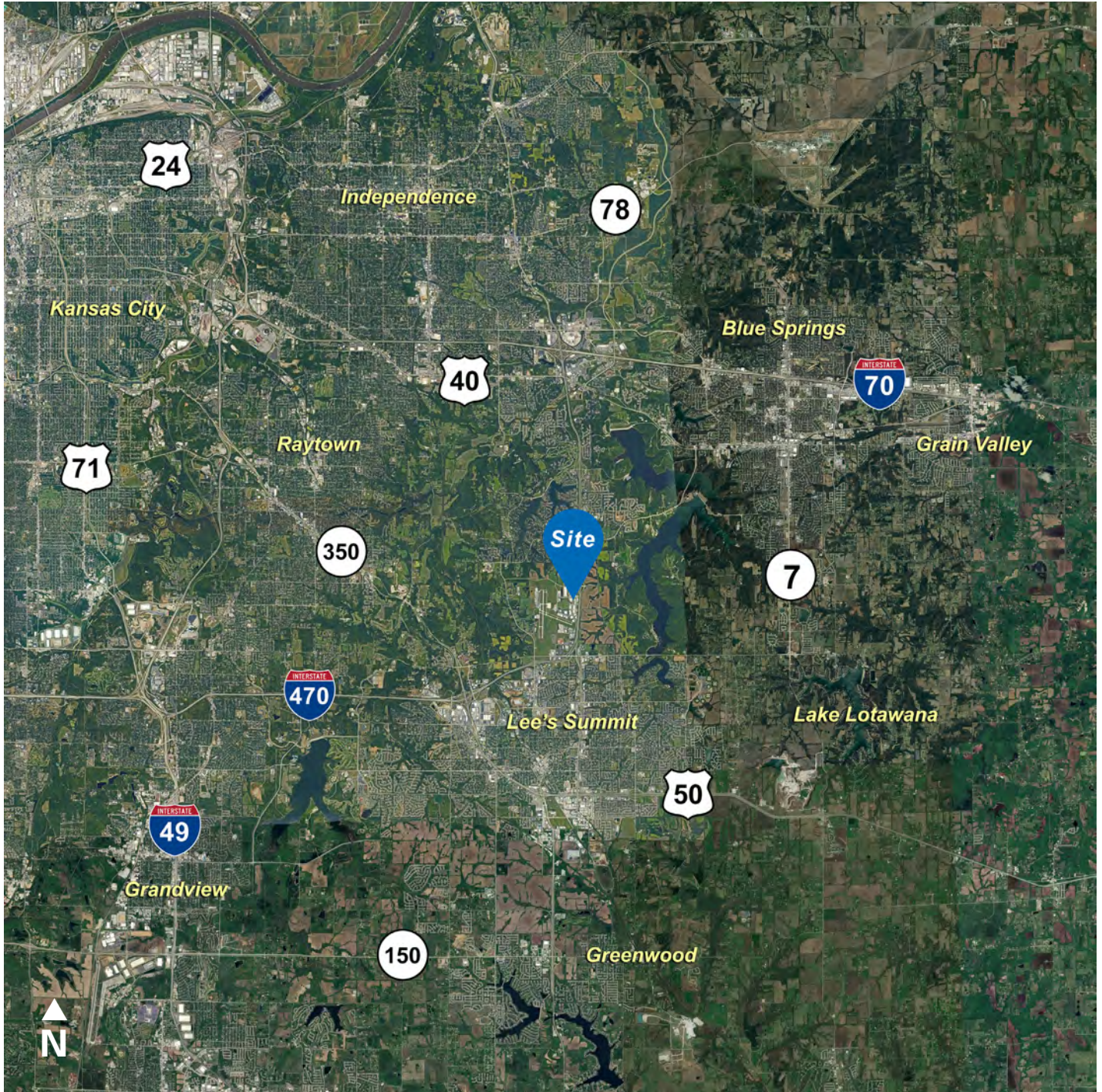
nmrkzimmer.com



NEWMARK
ZIMMER

The information contained herein has been obtained from sources deemed reliable but has not been verified and no guarantee, warranty or representation, either express or implied, is made with respect to such information. Terms of sale or lease and availability are subject to change or withdrawal without notice.

2741 NE MCBAIN DRIVE, LEE'S SUMMIT, MISSOURI



CONTACT

Nick Suarez, SIOR, CCIM

Senior Managing Director, Principal

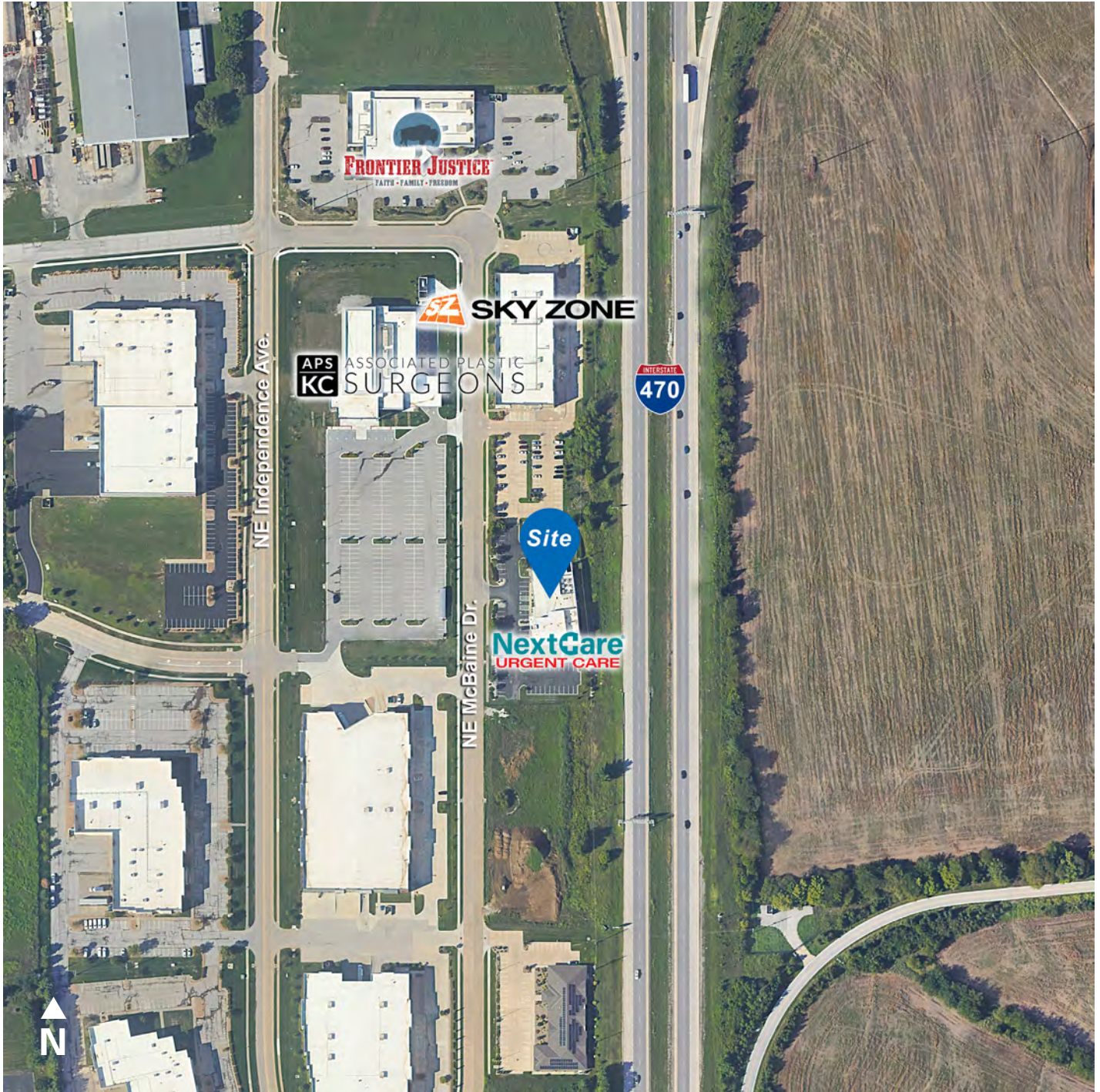
t 816-512-1012

nsuarez@nzimmer.com

nmrkzimmer.com

NEWMARK
ZIMMER

2741 NE MCBAINE DRIVE, LEE'S SUMMIT, MISSOURI



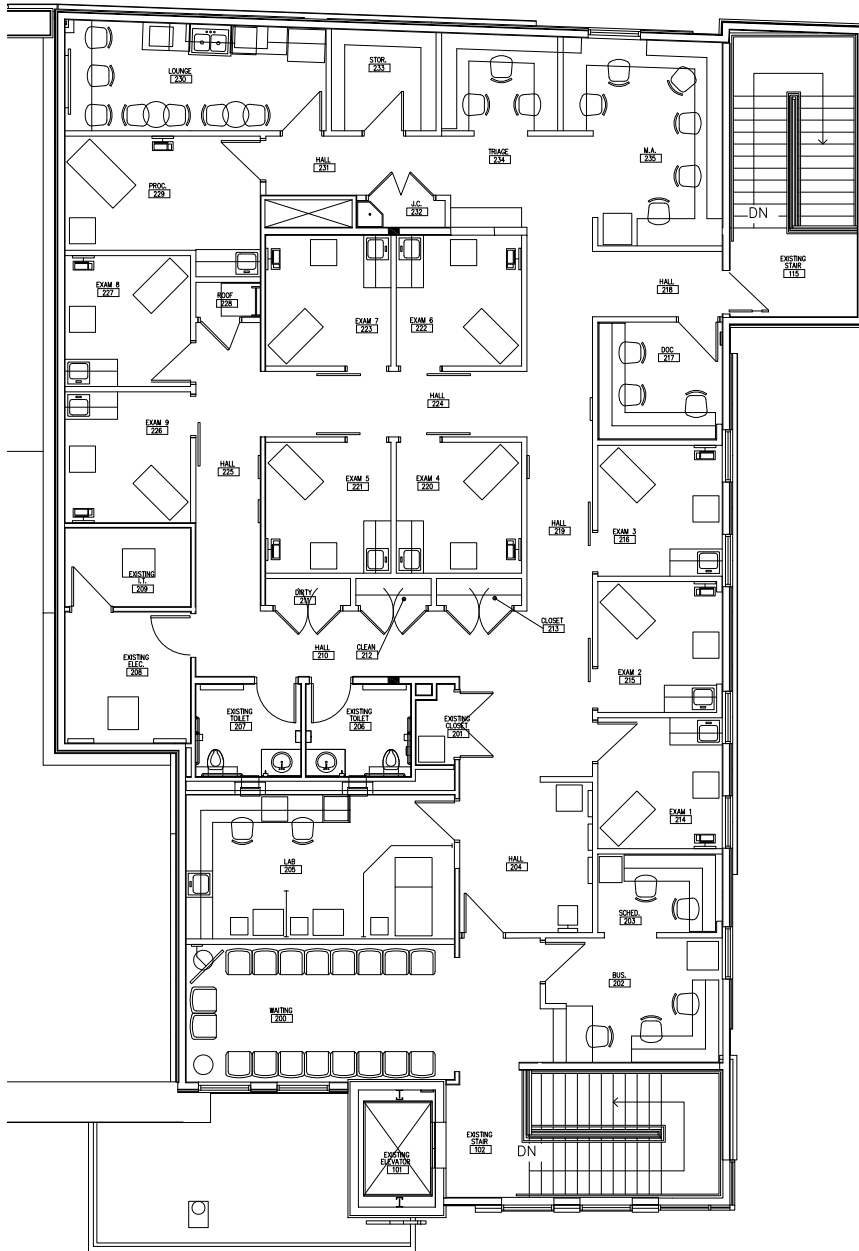
CONTACT

Nick Suarez, SIOR, CCIM
Senior Managing Director, Principal
t 816-512-1012
nsuarez@zimmer.com
nmrkzimmer.com

NEWMARK
ZIMMER

2741 NE MCBAIN DRIVE, LEE'S SUMMIT, MISSOURI

Floor Plan



CONTACT

Nick Suarez, SIOR, CCIM

Senior Managing Director, Principal

t 816-512-1012

nsuarez@nzimmer.com

nmrkzimmer.com

NEWMARK
ZIMMER

2741 NE MCBAIN DRIVE, LEE'S SUMMIT, MISSOURI



CONTACT

Nick Suarez, SIOR, CCIM
Senior Managing Director, Principal
t 816-512-1012
nsuarez@nzimmer.com
nmrkzimmer.com

NEWMARK
ZIMMER