

# SIERRA VISTA BUSINESS PARK

## 100-140 CHAPARRAL COURT

ANAHEIM HILLS, CALIFORNIA

BUILDING	SUITE	RENTABLE SF	LEASE RATE	COMMENTS
130 Chaparral Ct.	235-246	3,816 SF	\$2.20 FSG	5 Private offices, large open area, available now
140 Chaparral Ct.	250-260	3,695 SF	\$2.20 FSG	Available Now
140 Chaparral Ct.	230	2,068 SF	\$2.20 FSG	2 Private offices, large open area, restroom
140 Chaparral Ct.	240	2,064 SF	\$2.20 FSG	2 Private offices, large open area, restroom, available now
140 Chaparral Ct.	140	1,757 SF	\$1.95 MG	2 Private offices, large open office area, restroom, available now
130 Chaparral Ct.	235	1,304 SF	\$2.20 FSG	3 Private offices, storage, open area, available now
140 Chaparral Ct.	220	1,292 SF	\$2.20 FSG	2 Private offices, large open area, available now
130 Chaparral Ct.	215	898 SF	\$2.20 FSG	Available now
130 Chaparral Ct.	220	864 SF	\$2.20 FSG	3 Private offices, available now

FOR MORE INFORMATION PLEASE CONTACT

**MICHAEL BOOMER**  
**VICE PRESIDENT**

714.935.2344

MBoomer@voitco.com

Lic. #01209091

REAL ESTATE SERVICES

2400 E. KATELLA AVENUE, SUITE 750 | ANAHEIM, CALIFORNIA 92806 | 714.978.7880 | VOITCO.COM

Licensed as a Real Estate Broker by the DRE. The information contained herein has been obtained from sources we deem reliable. While we have no reason to doubt its accuracy, we do not guarantee it.

©2024 Voit Real Estate Services, Inc. All Rights Reserved. Lic. #01991785

# FOR LEASE

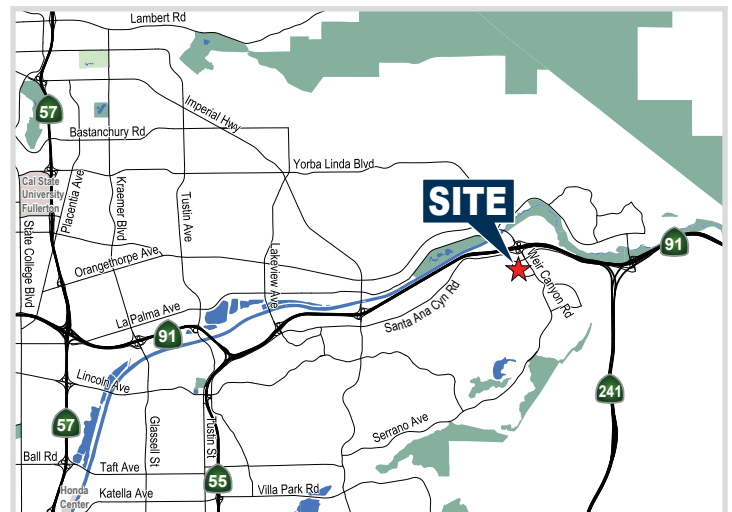
## SIERRA VISTA BUSINESS PARK

100-140 Chaparral Court, Anaheim, CA



### PROPERTY FEATURES

- High Tech Concrete Aggregate Architecture
- Ground Floor and 2nd Story Space Available
- Parking Ratio  $\pm$ 4:1
- Fully Fire Sprinklered
- Adjacent to 562,450 Square Foot Anaheim Hills Festival Center Regional Mall / 8 Plex Theatre
- Excellent Freeway Access to the Riverside (91) and Eastern Transportation Corridor (SR241)



### MIKE BOOMER

Vice President

714.935.2344

Lic. #01209091

mboomer@voitco.com

# Voit

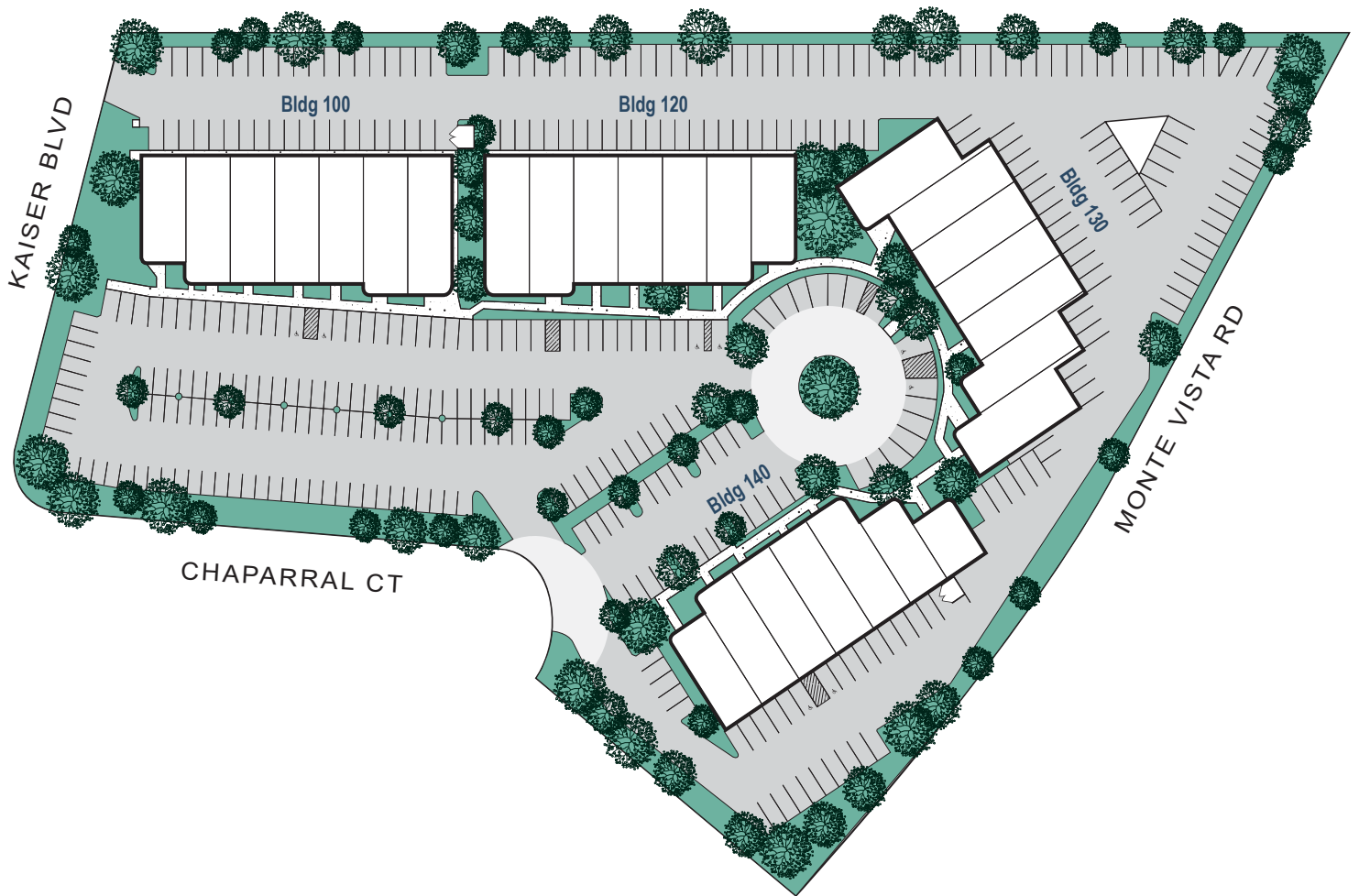
REAL ESTATE SERVICES

# FOR LEASE

## SIERRA VISTA BUSINESS PARK

100-140 Chaparral Court, Anaheim, CA

### SITE PLAN



**MIKE BOOMER**

Vice President

714.935.2344

Lic. #01209091

mboomer@voitco.com

**Voit**

REAL ESTATE SERVICES

2400 E. Katella Avenue, Suite 750, Anaheim, CA 92806 • 714.978.7880 • 714.978.9431 Fax

[www.VoitCo.com](http://www.VoitCo.com)

Licensed as a Real Estate Salesperson by the DRE. The information contained herein has been obtained from sources we deem reliable. While we have no reason to doubt its accuracy, we do not guarantee it. ©2023 Voit Real Estate Services, Inc. All Rights Reserved. License #01991785.

# FOR LEASE

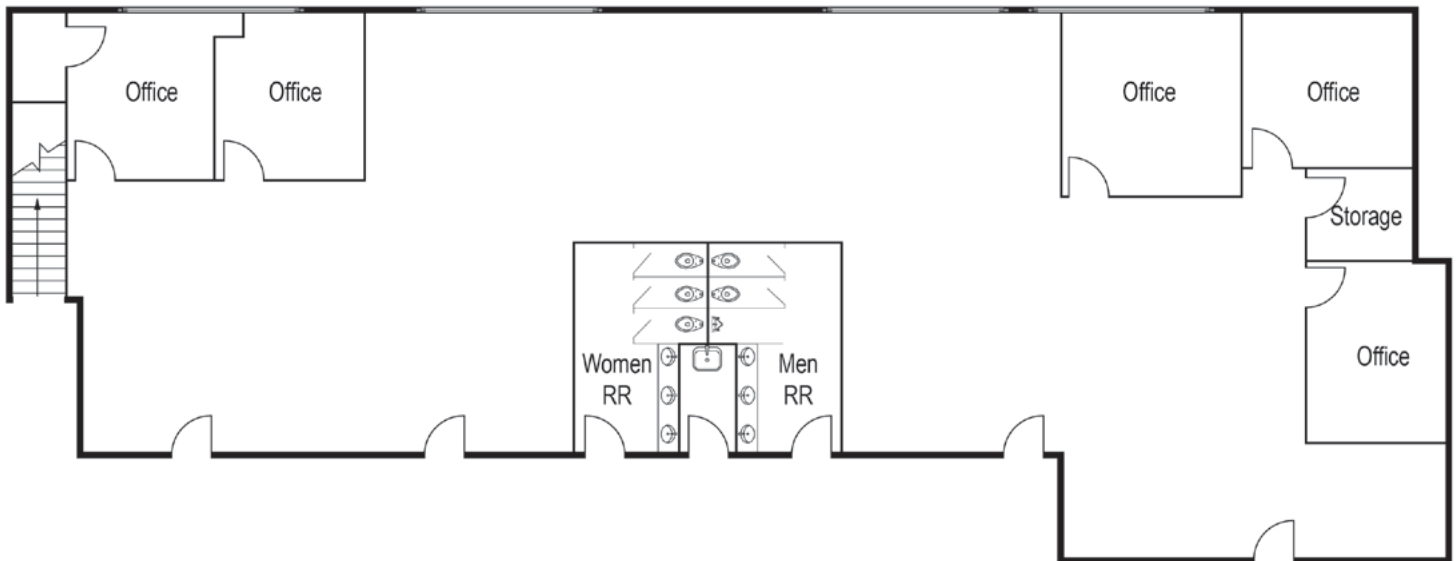
## SIERRA VISTA BUSINESS PARK

100-140 Chaparral Court, Anaheim, CA

±3,816 Square Feet

130 Chaparral Court, Suite 235-246

Anaheim, CA



**MIKE BOOMER**

Vice President

714.935.2344

Lic. #01209091

mboomer@voitco.com

**Voit**

REAL ESTATE SERVICES

2400 E. Katella Avenue, Suite 750, Anaheim, CA 92806 • 714.978.7880 • 714.978.9431 Fax

[www.VoitCo.com](http://www.VoitCo.com)

Licensed as a Real Estate Salesperson by the DRE. The information contained herein has been obtained from sources we deem reliable. While we have no reason to doubt its accuracy, we do not guarantee it. ©2023 Voit Real Estate Services, Inc. All Rights Reserved. License #01991785.

# FOR LEASE

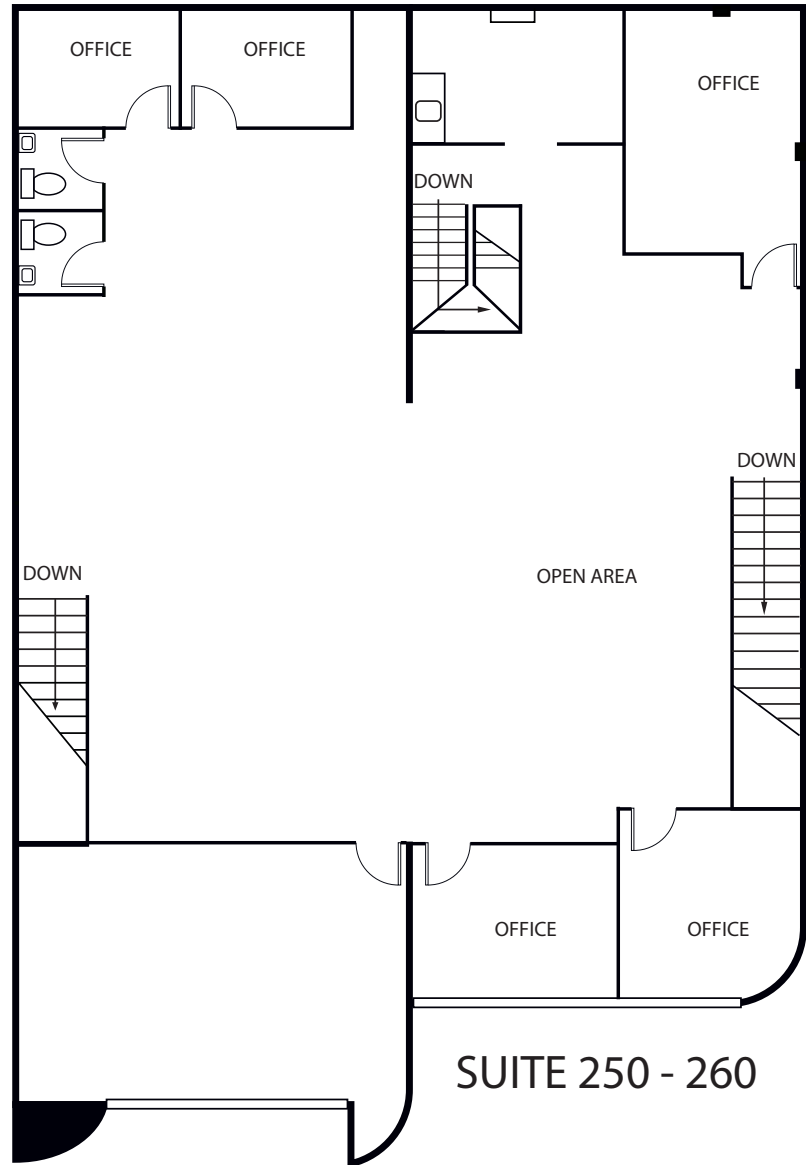
## SIERRA VISTA BUSINESS PARK

100-140 Chaparral Court, Anaheim, CA

±3,695 Square Feet

140 Chaparral Court, Suite 250-260

Anaheim, CA



**MIKE BOOMER**

Vice President

714.935.2344

Lic. #01209091

mboomer@voitco.com

**Voit**

REAL ESTATE SERVICES

2400 E. Katella Avenue, Suite 750, Anaheim, CA 92806 • 714.978.7880 • 714.978.9431 Fax

[www.VoitCo.com](http://www.VoitCo.com)

Licensed as a Real Estate Salesperson by the DRE. The information contained herein has been obtained from sources we deem reliable. While we have no reason to doubt its accuracy, we do not guarantee it. ©2023 Voit Real Estate Services, Inc. All Rights Reserved. License #01991785.

# FOR LEASE

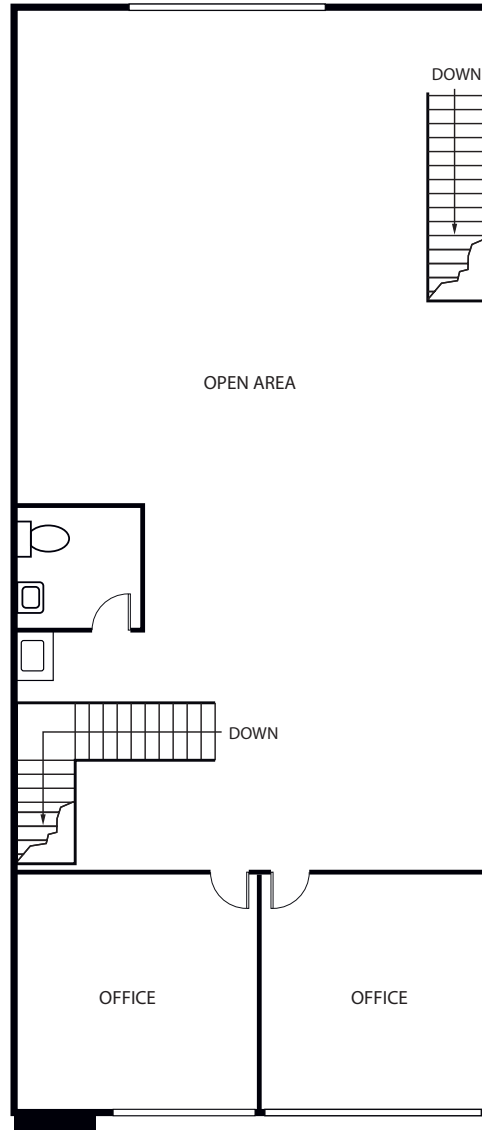
## SIERRA VISTA BUSINESS PARK

100-140 Chaparral Court, Anaheim, CA

±2,068 Square Feet

140 Chaparral Court, Suite 230

Anaheim, CA



**MIKE BOOMER**

Vice President

714.935.2344

Lic. #01209091

mboomer@voitco.com

**Voit**

REAL ESTATE SERVICES

2400 E. Katella Avenue, Suite 750, Anaheim, CA 92806 • 714.978.7880 • 714.978.9431 Fax

[www.VoitCo.com](http://www.VoitCo.com)

Licensed as a Real Estate Salesperson by the DRE. The information contained herein has been obtained from sources we deem reliable. While we have no reason to doubt its accuracy, we do not guarantee it. ©2023 Voit Real Estate Services, Inc. All Rights Reserved. License #01991785.

# FOR LEASE

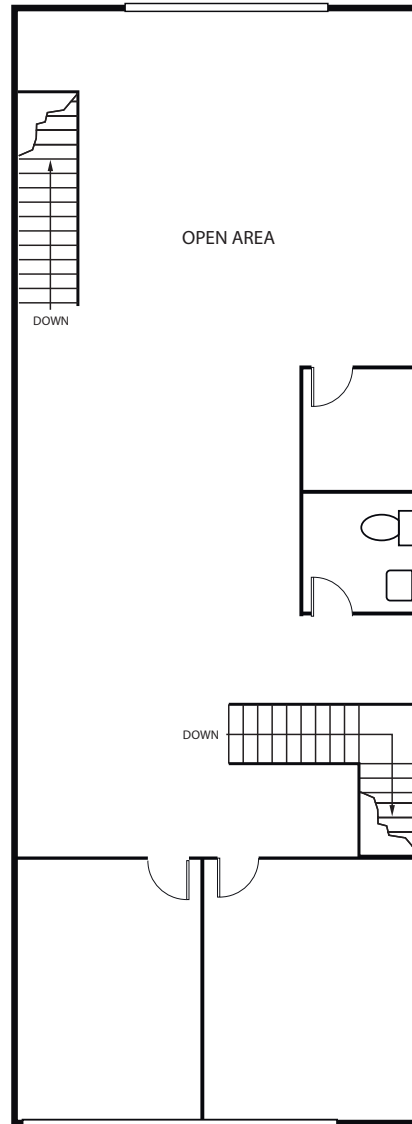
## SIERRA VISTA BUSINESS PARK

100-140 Chaparral Court, Anaheim, CA

±2,064 Square Feet

140 Chaparral Court, Suite 240

Anaheim, CA



**MIKE BOOMER**

Vice President

714.935.2344

Lic. #01209091

mboomer@voitco.com

**Voit**

REAL ESTATE SERVICES

2400 E. Katella Avenue, Suite 750, Anaheim, CA 92806 • 714.978.7880 • 714.978.9431 Fax

[www.VoitCo.com](http://www.VoitCo.com)

Licensed as a Real Estate Salesperson by the DRE. The information contained herein has been obtained from sources we deem reliable. While we have no reason to doubt its accuracy, we do not guarantee it. ©2023 Voit Real Estate Services, Inc. All Rights Reserved. License #01991785.

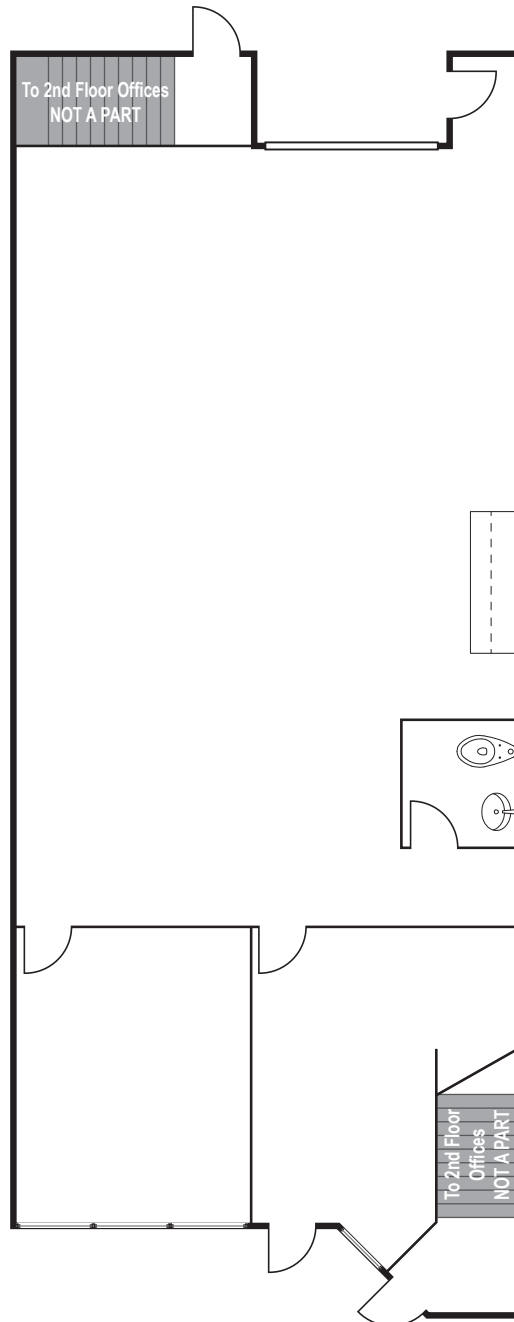
# FOR LEASE

## SIERRA VISTA BUSINESS PARK

100-140 Chaparral Court, Anaheim, CA

±1,757 Square Feet

140 Chaparral Court, Suite 140  
Anaheim, CA



**MIKE BOOMER**  
Vice President  
714.935.2344  
Lic. #01209091  
mboomer@voitco.com

**Voit**  
REAL ESTATE SERVICES

2400 E. Katella Avenue, Suite 750, Anaheim, CA 92806 • 714.978.7880 • 714.978.9431 Fax

[www.VoitCo.com](http://www.VoitCo.com)

Licensed as a Real Estate Salesperson by the DRE. The information contained herein has been obtained from sources we deem reliable. While we have no reason to doubt its accuracy, we do not guarantee it. ©2023 Voit Real Estate Services, Inc. All Rights Reserved. License #01991785.



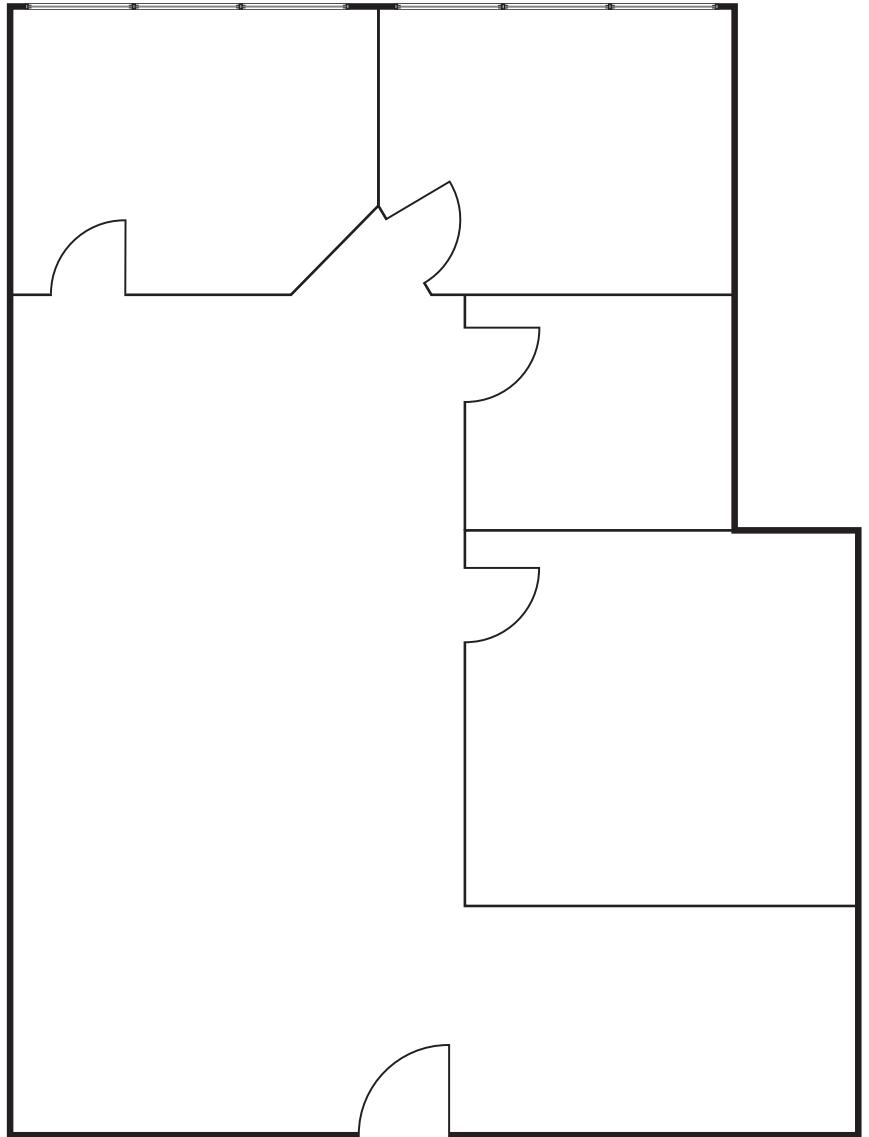
# FOR LEASE

## SIERRA VISTA BUSINESS PARK

100-140 Chaparral Court, Anaheim, CA

**±1,304 Square Feet**

130 Chaparral Court, Suite 235  
Anaheim, CA



**MIKE BOOMER**  
Vice President  
714.935.2344  
Lic. #01209091  
mboomer@voitco.com

***Voit***  
REAL ESTATE SERVICES

2400 E. Katella Avenue, Suite 750, Anaheim, CA 92806 • 714.978.7880 • 714.978.9431 Fax

[www.VoitCo.com](http://www.VoitCo.com)

Licensed as a Real Estate Salesperson by the DRE. The information contained herein has been obtained from sources we deem reliable. While we have no reason to doubt its accuracy, we do not guarantee it. ©2023 Voit Real Estate Services, Inc. All Rights Reserved. License #01991785.

# FOR LEASE

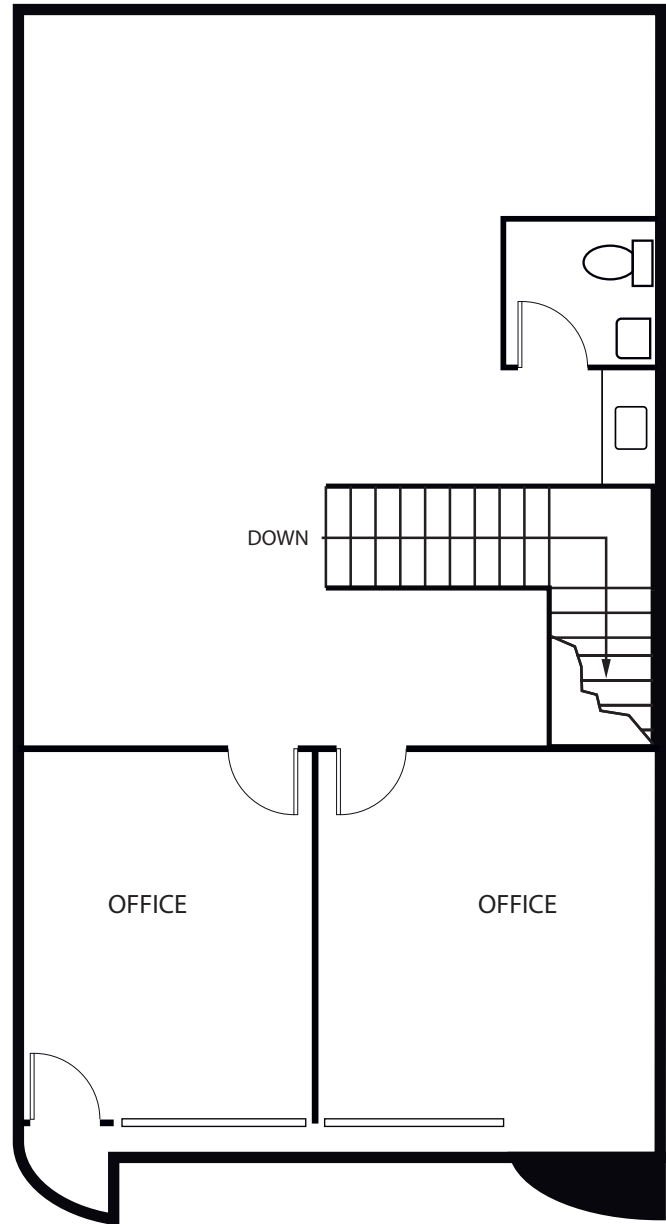
## SIERRA VISTA BUSINESS PARK

100-140 Chaparral Court, Anaheim, CA

±1,292 Square Feet

140 Chaparral Court, Suite 220

Anaheim, CA



**MIKE BOOMER**

Vice President

714.935.2344

Lic. #01209091

mboomer@voitco.com

**Voit**

REAL ESTATE SERVICES

2400 E. Katella Avenue, Suite 750, Anaheim, CA 92806 • 714.978.7880 • 714.978.9431 Fax

[www.VoitCo.com](http://www.VoitCo.com)

Licensed as a Real Estate Salesperson by the DRE. The information contained herein has been obtained from sources we deem reliable. While we have no reason to doubt its accuracy, we do not guarantee it. ©2023 Voit Real Estate Services, Inc. All Rights Reserved. License #01991785.

# FOR LEASE

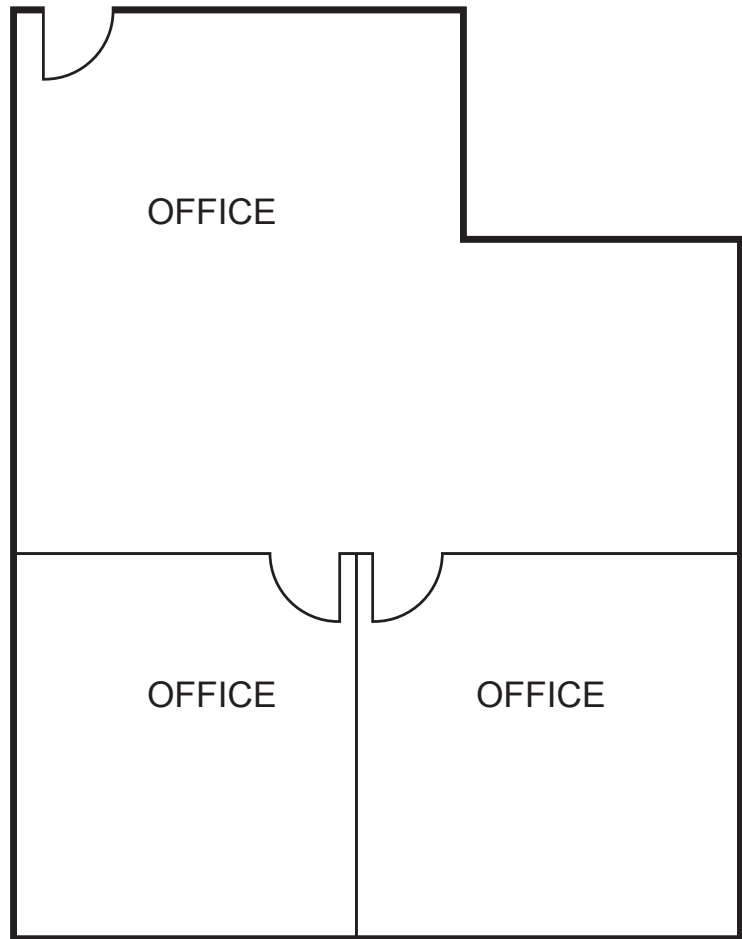
## SIERRA VISTA BUSINESS PARK

100-140 Chaparral Court, Anaheim, CA

±898 Square Feet

130 Chaparral Court, Suite 215

Anaheim, CA



**MIKE BOOMER**

Vice President

714.935.2344

Lic. #01209091

mboomer@voitco.com

**Voit**

REAL ESTATE SERVICES

2400 E. Katella Avenue, Suite 750, Anaheim, CA 92806 • 714.978.7880 • 714.978.9431 Fax

[www.VoitCo.com](http://www.VoitCo.com)

Licensed as a Real Estate Salesperson by the DRE. The information contained herein has been obtained from sources we deem reliable. While we have no reason to doubt its accuracy, we do not guarantee it. ©2023 Voit Real Estate Services, Inc. All Rights Reserved. License #01991785.

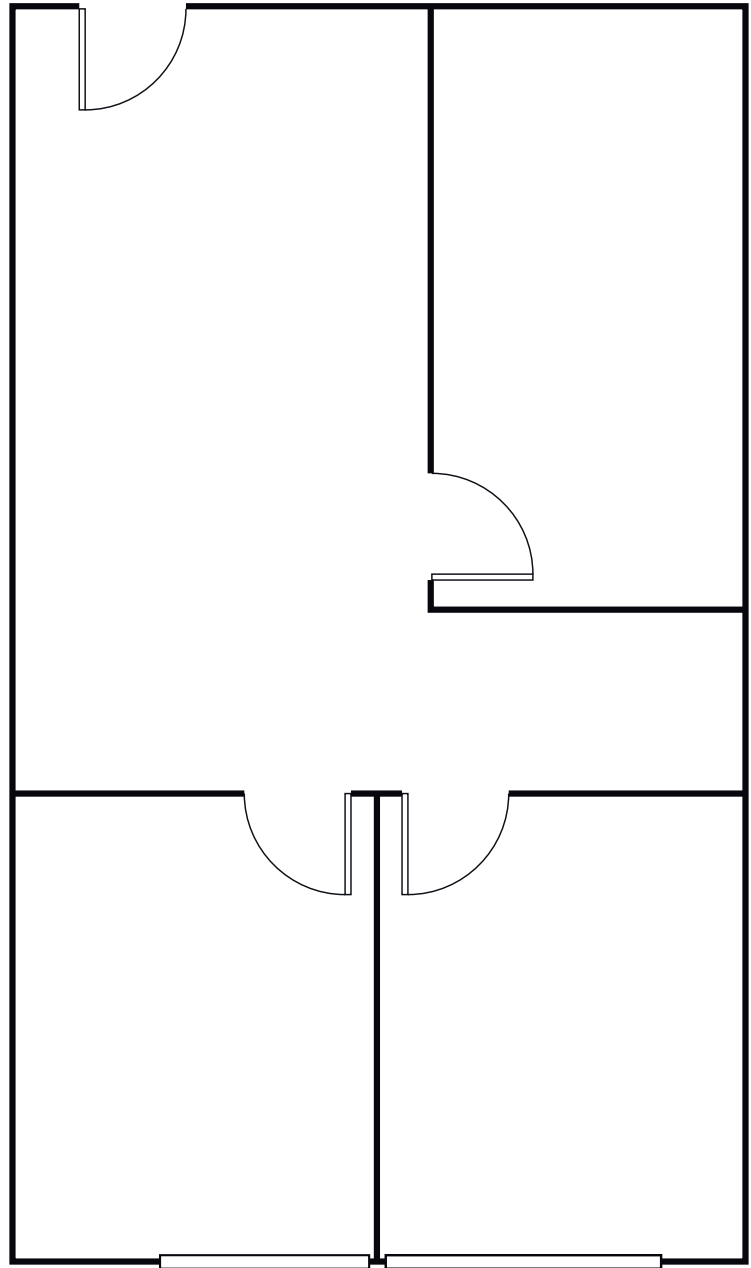
**FOR LEASE**

**SIERRA VISTA BUSINESS PARK**

100-140 Chaparral Court, Anaheim, CA

**±864 Square Feet**

130 Chaparral Court, Suite 220  
Anaheim, CA



**MIKE BOOMER**  
Vice President  
714.935.2344  
Lic. #01209091  
mboomer@voitco.com

**Voit**  
REAL ESTATE SERVICES

2400 E. Katella Avenue, Suite 750, Anaheim, CA 92806 • 714.978.7880 • 714.978.9431 Fax

[www.VoitCo.com](http://www.VoitCo.com)

Licensed as a Real Estate Salesperson by the DRE. The information contained herein has been obtained from sources we deem reliable. While we have no reason to doubt its accuracy, we do not guarantee it. ©2023 Voit Real Estate Services, Inc. All Rights Reserved. License #01991785.