



MOUNTAIN WEST
COMMERCIAL REAL ESTATE






SOUTH JORDAN BUSINESS PARK

10434 SOUTH 1055 WEST • SOUTH JORDAN • UTAH • 84095

FOR LEASE

PROPERTY SPECS

- \$26 PSF Full Service
- Suite 201: 1,489 RSF
Suite 202: 1,488 RSF
- Building Signage Available
- Turn Key Office Space
- Large Windows with lots of natural light
- Quick access to I-15 via 10600 South

			
1 MILE	8,027 2023 EST. POPULATION	3,106 2023 EST. HOUSEHOLDS	\$151,271 2023 EST. AVERAGE HH INCOME
3 MILE	100,779 2023 EST. POPULATION	34,013 2023 EST. HOUSEHOLDS	\$143,501 2023 EST. AVERAGE HH INCOME
5 MILE	327,359 2023 EST. POPULATION	106,844 2023 EST. HOUSEHOLDS	\$144,392 2023 EST. AVERAGE HH INCOME

CONTACT:

JOSH VANCE

jvance@mtwest.com
direct 801.456.8857
[View Profile](#)

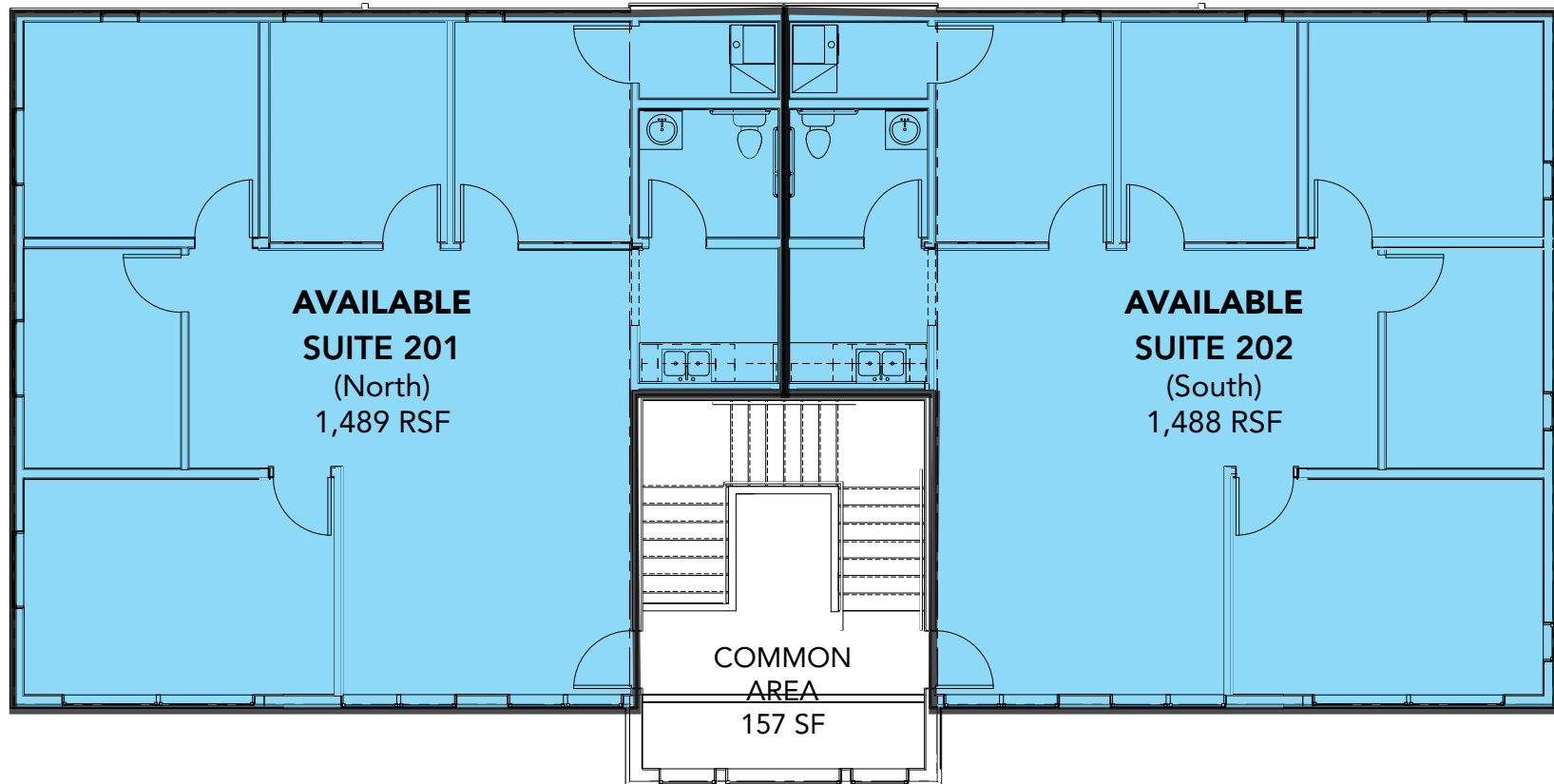
J.R. HOWA

jhowa@mtwest.com
direct 801.578.5545
[View Profile](#)



FULL SERVICE COMMERCIAL REAL ESTATE

SOUTH JORDAN PROFESSIONAL OFFICES



CONTACT:

JOSH VANCE

jvance@mtwest.com
direct 801.456.8857

[View Profile](#)

J.R. HOWA

jhowa@mtwest.com
direct 801.578.5545

[View Profile](#)

SOUTH JORDAN PROFESSIONAL OFFICES



SOUTH JORDAN PROFESSIONAL OFFICES

