

Interstate Commerce Center

±21,073 SF Available

1608 NW 23rd Avenue
Fort Lauderdale, FL



Property Features

CBRE, as exclusive marketing advisors, are proud to offer the Interstate Commerce Center. This ±21,073 SF class facility features direct I-95 frontage, 2 dock high doors, a 24' clear height, and 1,000 SF of office. The site provides easy access to I-95 from both Oakland and Sunrise Boulevards.

Contact Us

Tom O'Loughlin

Vice Chairman

+1 954 817 3919

tom.oloughlin@cbre.com

Michael Oretsky

Vice President

+1 954 798 4284

michael.oretsky@cbre.com

Owned/Managed by

EASTGROUP
PROPERTIES

INTERSTATE COMMERCE CENTER

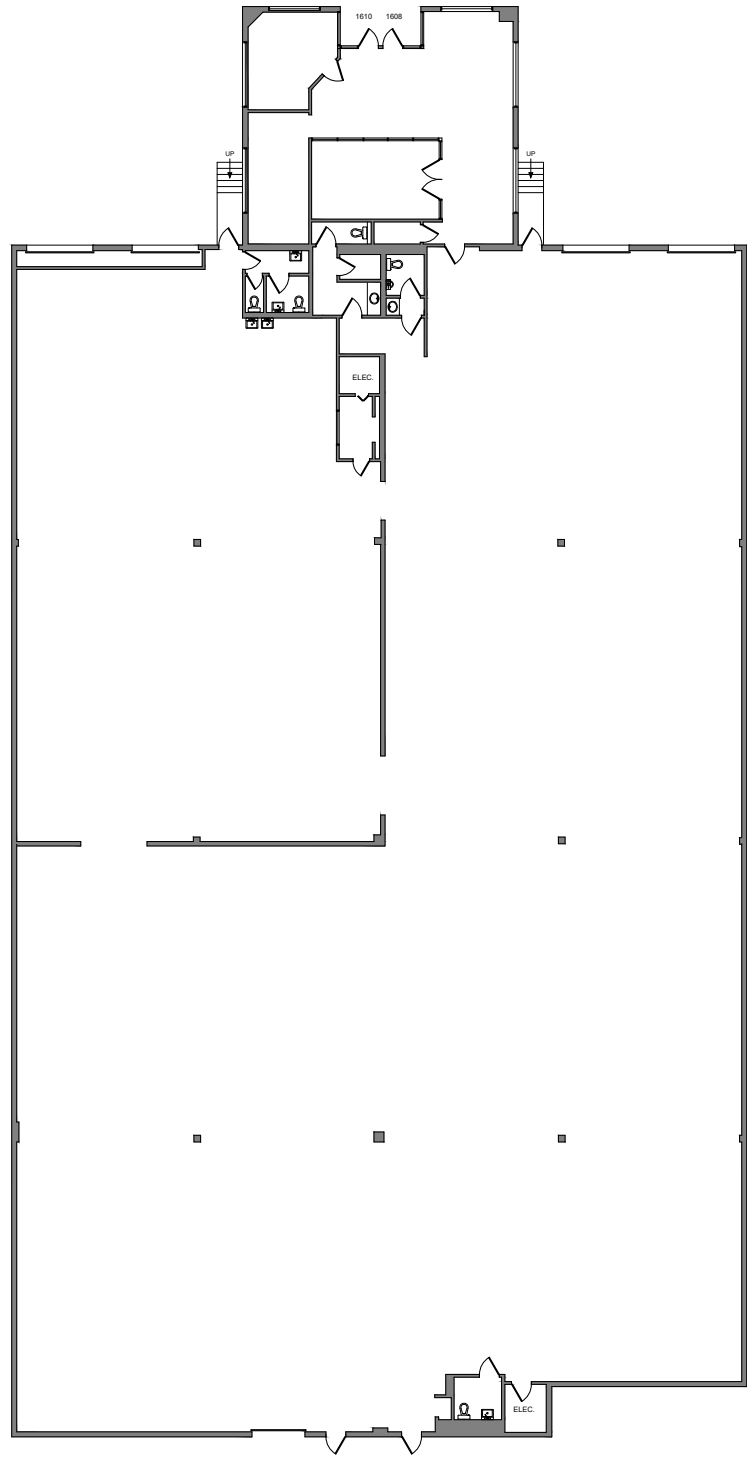
1608 NW 23rd Avenue | Fort Lauderdale, FL 33309

For Lease

Property Features

- + ±21,073 SF Available - Suite 1608
- + ±1,000 SF office
- + ±24' clear height
- + 4 dock high doors
- + 1 grade level door
- + Direct I-95 frontage
- + Easy access to I-95 from Oakland Park / Sunrise Blvd
- + Available March 1, 2026
- + **Lease Rate: Please Inquire**

Floor Plan



Property Location



© 2025 CBRE, Inc. All rights reserved. This information has been obtained from sources believed reliable, but has not been verified for accuracy or completeness. You should conduct a careful, independent investigation of the property and verify all information. Any reliance on this information is solely at your own risk. CBRE and the CBRE logo are service marks of CBRE, Inc. All other marks displayed on this document are the property of their respective owners, and the use of such logos does not imply any affiliation with or endorsement of CBRE. Photos herein are the property of their respective owners. Use of these images without the express written consent of the owner is prohibited.